

REVISIONS							
ZONE	SYM	DESCRIPTION	DATE	E.M.N. NO.	DRAFT	CHKD	APPD
	X	EXP. RELEASE	10-12-64	X	SEC		
	Ø	ORIGINAL RELEASE FOR PRODUCTION	10-19-64	Ø	@		
	A	988KΩ-9883 WAS 988KΩ-9881	6-17-66	16399	MZ	YB	Ø

CHART I  
DIMENSIONS

STYLE	A	B	C	D
RN55	1 1/2 ± 1/8	1/4 ± 1/32	$\begin{matrix} .025 \\ \pm .002 \end{matrix}$	7/64 ± 1/32
RN60	1 1/2 ± 1/8	3/8 ± 1/16	$\begin{matrix} .025 \\ \pm .002 \end{matrix}$	$\begin{matrix} .125 +.040 \\ - .031 \end{matrix}$
RN65	1 1/2 ± 1/8	$\begin{matrix} 5/8 + 1/32 \\ - 3/32 \end{matrix}$	$\begin{matrix} .025 \\ \pm .002 \end{matrix}$	$\begin{matrix} 3/16 + 1/16 \\ - 1/32 \end{matrix}$
RN70	1 1/2 ± 1/8	$\begin{matrix} 3/4 + 1/8 \\ - 1/16 \end{matrix}$	$\begin{matrix} .032 \\ \pm .002 \end{matrix}$	$\begin{matrix} 1/4 + 5/64 \\ - 1/32 \end{matrix}$
RN75	1 1/2 ± 1/8	1 1/16 ± 1/16	$\begin{matrix} .032 \\ \pm .002 \end{matrix}$	$\begin{matrix} 3/8 + 1/16 \\ - 1/32 \end{matrix}$
RN80	1 1/2 ± 1/8	$\begin{matrix} 2 3/16 + 3/32 \\ - 1/16 \end{matrix}$	$\begin{matrix} .032 \\ \pm .002 \end{matrix}$	$\begin{matrix} 3/8 + 1/16 \\ - 1/32 \end{matrix}$

CHART III (SEE NOTE 5)

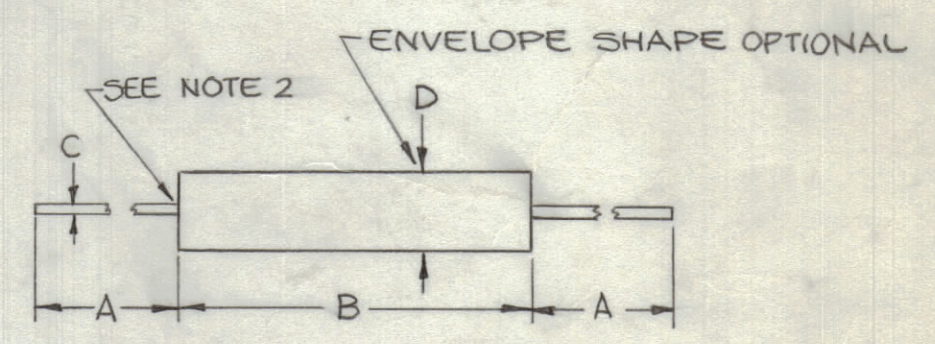
SYMBOL	RESISTANCE TOLERANCE
B	±0.10%
C	±0.25%
D	±0.50%
F	±1.00%

CHART II SEE NOTES 3,4,6 & 7

CHARACTERISTIC	B	C	D	E	F	G
RN55 MINIMUM	-	49.9Ω	10.0Ω	49.9Ω	-	10.0Ω
RN55 MAXIMUM	-	100KΩ	301KΩ	100KΩ	-	301KΩ
RN60 MINIMUM	-	49.9Ω	10.0Ω	49.9Ω	-	10.0Ω
RN60 MAXIMUM	-	499KΩ	1.0MΩ	499KΩ	-	1.0MΩ
RN65 MINIMUM	-	49.9Ω	10.0Ω	49.9Ω	49.9Ω	10.0Ω
RN65 MAXIMUM	-	1.0MΩ	2.0MΩ	1.0MΩ	1.0MΩ	2.0MΩ
RN70 MINIMUM	-	24.9Ω	10.0Ω	24.9Ω	24.9Ω	10.0Ω
RN70 MAXIMUM	-	1.0MΩ	2.49MΩ	1.0MΩ	1.0MΩ	2.49MΩ
RN75 MINIMUM	10.0Ω	49.9Ω	-	49.9Ω	-	10.0Ω
RN75 MAXIMUM	5.11MΩ	2.0MΩ	-	2.0MΩ	-	5.11MΩ
RN80 MINIMUM	30.1Ω	-	-	-	-	30.1Ω
RN80 MAXIMUM	10.0MΩ	-	-	-	-	10.0MΩ
PERCENT/±C	±.05	±.005	$\begin{matrix} +.02 \\ -.05 \end{matrix}$	±.0025	±.005	$\begin{matrix} +.02 \\ -.05 \end{matrix}$
PARTS/MILLION °C	±500	±50	$\begin{matrix} +200 \\ -500 \end{matrix}$	±25	±50	$\begin{matrix} +200 \\ -500 \end{matrix}$
MAX. AMB TEMP AT FULL POWER °C	70	125	70	125	125	70
MAX AMB TEMP AT ZERO POWER (°C)	150	175	165	175	175	165
POWER RATING IN WATTS AND MAX. V. AT 70° C.	-	1/10W, 200V	1/8W, 200V	1/10W, 200V	-	1/10W, 200V
RN55	-	1/8W, 250V	1/4W, 300V	1/8W, 250V	-	1/8W, 250V
RN60	-	1/4W, 300V	1/2W, 350V	1/4W, 300V	1/2W, 350V	1/4W, 300V
RN65	-	1/2W, 350V	3/4W, 500V	1/2W, 350V	3/4W, 500V	1/2W, 350V
RN70	-	1W, 500V	-	1W, 500V	-	1W, 500V
RN75	-	-	-	-	-	-
RN80	-	-	-	-	-	-
RESISTANCE TOLERANCES (±%)	1	1, .5, .25, .1	1	1, .5, .25, .1	1, .5, .25, .1	1

NOTES

- RESISTANCE TO BE SPECIFIED TO THREE SIGNIFICANT FIGURES. THE LETTER "R", IF USED, SHALL INDICATE THE DECIMAL POINT. THE LAST DIGIT INDICATES THE NUMBER OF ZEROES IF THE LETTER "R" IS NOT PRESENT. FOR RESISTANCE TOLERANCE "B" THE RESISTANCE MAY BE SPECIFIED TO FOUR SIGNIFICANT FIGURES.  
  
EXAMPLE: 9.88Ω=9R88  
98.8 Ω=98R8  
988 Ω=9880  
988KΩ=9883  
RESISTANCE TOLERANCE "B" ONLY  
9.883Ω=9R883  
9.883KΩ=98830
- THE LEADS SHALL BE SOLDERABLE TO WITHIN 0.062 INCH OF THE RESISTOR BODY.
- RESISTORS SHALL BE IN ACCORDANCE WITH MIL-R-10509E.
- RESISTANCE VALUES SHALL BE IN ACCORDANCE WITH MIL-R-10509E AND MS90169A.
- RESISTANCE TOLERANCES B,C, AND D MAY BE USED ONLY WITH CHARACTERISTICS C,E, AND F.
- CHARACTERISTIC "G" IS HERMETICALLY SEALED, OTHERWISE IT IS IDENTICAL TO CHARACTERISTIC "D".
- ENGINEERING APPROVAL REQUIRED FOR THE USE OF CHARACTERISTICS C,E,F, AND G.



RN55 D 49R9 F  
 STYLE (CHART-I) CHARACTERISTIC (CHART-II) RESISTANCE (NOTE 1&4) TOLERANCES (CHART-III)

STANDARD DRAWING

REQ'D.	ITEM	PART NUMBER	DESCRIPTION	SYMBOL
J CAMARDA / R DEWEY LIST OF MATERIAL				
MATERIAL		THE TECHNICAL MATERIEL CORP. MAMARONECK, NEW YORK		
FINISH		TITLE RESISTOR, PRECISION CARBON FILM, RESIN COATED		
UNLESS OTHERWISE SPECIFIED DIMENSIONS ARE IN INCHES AND INCLUDE CHEMICALLY APPLIED OR PLATED FINISHES		DRAWN SEC	DATE 10-12-64	FINAL APPROVAL [Signature]
DECIMALS .X ± .05 .XX ± .01 .XXX ± .005		CHECKED @	DATE 10-12-64	DATE 10/16/64
FRACTIONS ± 1/64 ANGLES ± 0° 30'		ELECT. DES. [Signature]	DATE 10/16/64	DATE 10/16/64
TOLERANCES		MECH. DES.	DATE	DATE
THE CONTENTS OF THIS DRAWING ARE THE EXCLUSIVE PROPERTY OF THE TECHNICAL MATERIEL CORP. ITS UNAUTHORIZED USE OR REPRODUCTION IN WHOLE OR IN PART IS STRICTLY FORBIDDEN.		SHEET RN55,60,65,70,75,80		
NOTES		REV. LTR.		

RN55,60,65,70,75,80  
A