

TMC PART NUMBER	CONTACT ARRANGEMENT	COIL VOLTS
RL184-1	219BBXPM	230 VAC
RL184-2	219ABAP	24 VDC
RL184-3	219BBXP	24VDC

REVISIONS						
ZONE	LTR	DESCRIPTION	DATE	E.M.N.NO	DRAFT	CHKD APPD
	A	REV TO ACCEPT -2		19952	CV	<i>Pek Pek</i>
	B	ADDED -3	4/16/7	20326	GE	<i>W Pek</i>

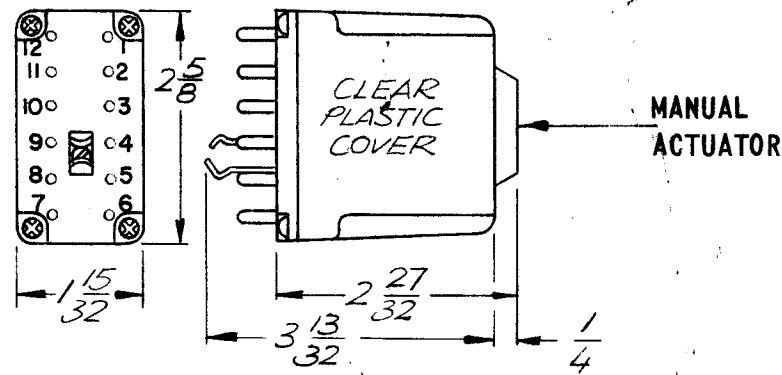
SPECIFICATIONS

MOUNTING: TS196-1
 CONTACTS: 10 AMPERE
 INSULATION: 1/4" OVER THE SURFACE, 1/8" THROUGH AIR, 1500 VOLTS DIELECTRIC TEST.
 COILS: AC TO 120 VOLTS APPROX 5.0 VA
 DC TO 125 VOLTS APPROX 1.6 WATTS
 MAXIMUM AMBIENT: 50°C
 OPERATE TIME: 15MS
 RELEASE TIME: 15MS
 LIFE: 20,000,000 NO LOAD
 OPERATION: AC RELAYS OPERATE AT 85% NOMINAL VOLTAGE
 DC RELAYS OPERATE AT 80% NOMINAL VOLTAGE
 OVER VOLTAGE: AC AND DC RELAYS WITHSTAND 110% NOMINAL VOLTAGE WITHOUT DAMAGE.

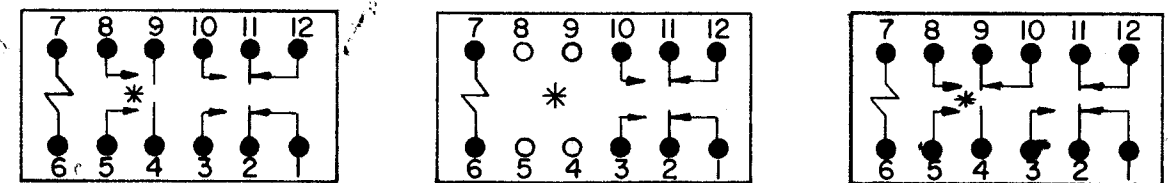
COIL VOLTAGE

AC RELAYS				
NOMINAL VOLTAGE	MILLIAMPERES ARMATURE OPEN (COLD)	(APPROX.) ARMATURE SEALED (HOT)	(APPROX.) 60 CYCLE IMPEDANCE (HOT)	(APPROX.) RESISTANCE (COLD)
6	1450.	800.	7.5	1.2
12	720.	410.	29.	4.8
24	350.	200.	120.	19.
115	80.	45.	2600.	430.

DC RELAYS			
NOMINAL VOLTAGE	MILLIAMPERES (APPROX)		(APPROX) RESISTANCE (COLD)
	COLD	HOT	
6	270	250	22
12	130	120	92
24	67	60	360
32	46	41	695
115	14	13	8200



CONTACT ARRANGEMENT



219BBXP # 219BXP # 219ABAP #
 # ADD M FOR MANUAL ACTUATOR
 * LOCATION OF LOCKING PIN

REQ'D	ITEM	PART NUMBER	DESCRIPTION	SYM.
-------	------	-------------	-------------	------

LIST OF MATERIAL

THE TECHNICAL MATERIEL CORP.
 MAMARONECK, NEW YORK

RELAY PLUG-IN MODULE

QTY / UNIT	MODEL USED ON	ASS'Y NO.
1	PALA-10K	API48
APPLICATION		
	CODE	

NOTICE TO PERSONS RECEIVING THIS DRAWING
 THE TECHNICAL MATERIEL CORPORATION claims proprietary right in the material disclosed hereon. This drawing is issued in confidence for engineering information only and may not be reproduced or used to manufacture anything shown hereon without permission from THE TECHNICAL MATERIEL CORPORATION to the user. This drawing is loaned for mutual assistance and is subject to recall at any time.

UNLESS OTHERWISE SPECIFIED DIMENSIONS ARE IN INCHES AND INCLUDE CHEMICALLY APPLIED OR PLATED FINISHES	FINAL APPROVAL	DATE
DECIMALS .X ± .05 .XX ± .01 .XXX ± .005 FRACTIONS 1/64 TOLS. ANGLES 0° - 30'	MECH. DES.	DATE
	ELECT. DES.	DATE
	CHECKED	DATE
	DRAWN	DATE
FINISH	S401-504	

SIZE	CODE IDENT. NO.	DWG NO.	ISSUE
B	82679	RL 184	B
SCALE		SHEET	OF