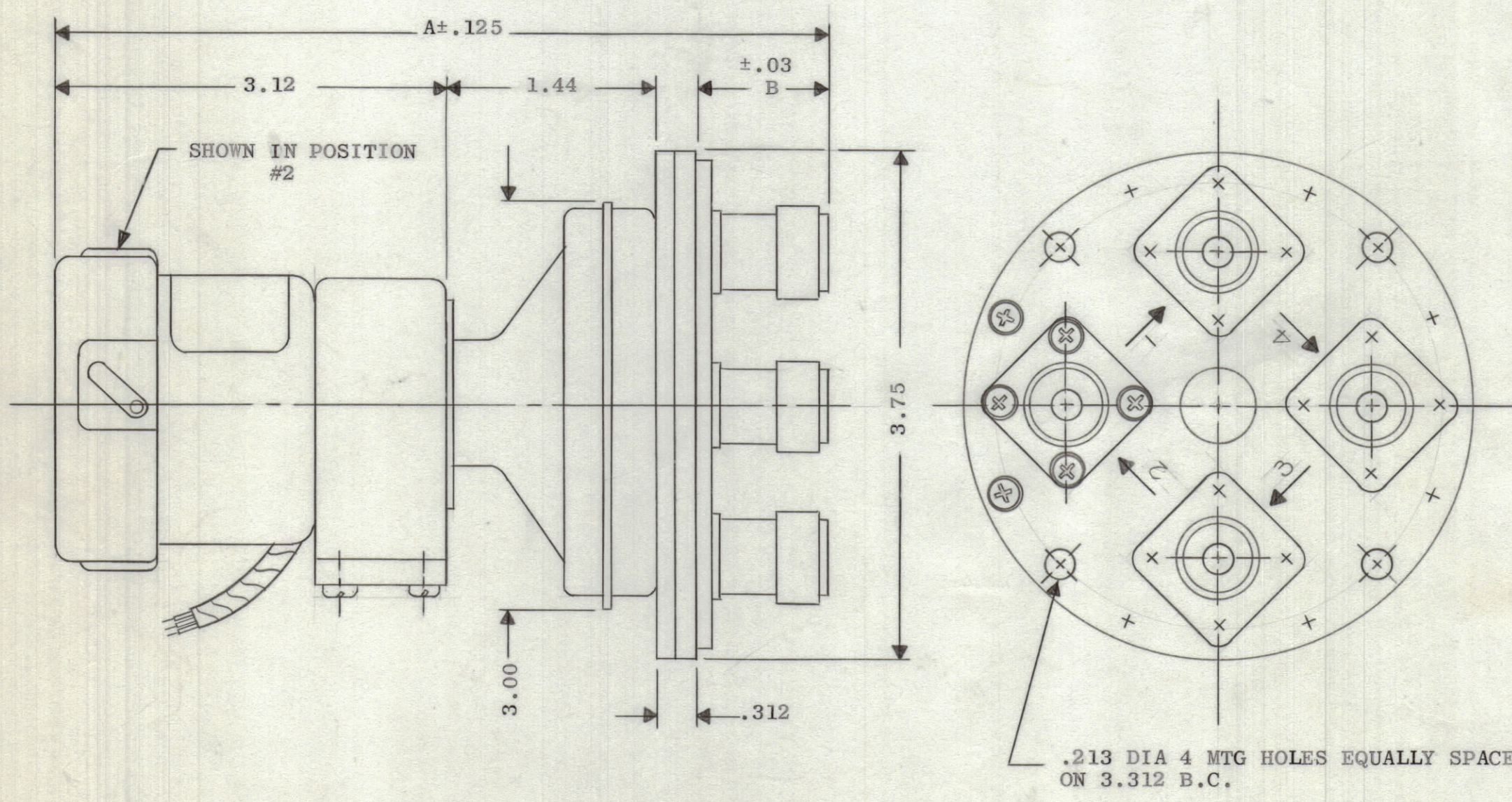


TMC PART NUMBER	MANUFACTURERS PART NUMBER	POWER RATING	COAX CONNECTOR	ACTUATOR TYPE	AUXILIARY CONTACTS	DIMENSIONS	
RL177-1	RC53A6300-E-2-4-C	.3KW CW AVERAGE @30 MC .4KW CW AVERAGE @600 MC	HN	LATCHING, NON SELF DEENERGIZING	3 DPDT	-A-	-B-
						5.60	0.69

REVISIONS						
ZONE	SYM	DESCRIPTION	DATE	E.M.N. NO.	DRAFT	CHKD
X		EXPERIMENTAL RELEASE	8/31/66		JL	
Ø		ORIGINAL RELEASE FOR PRODUCTION	10/20/66		CV	



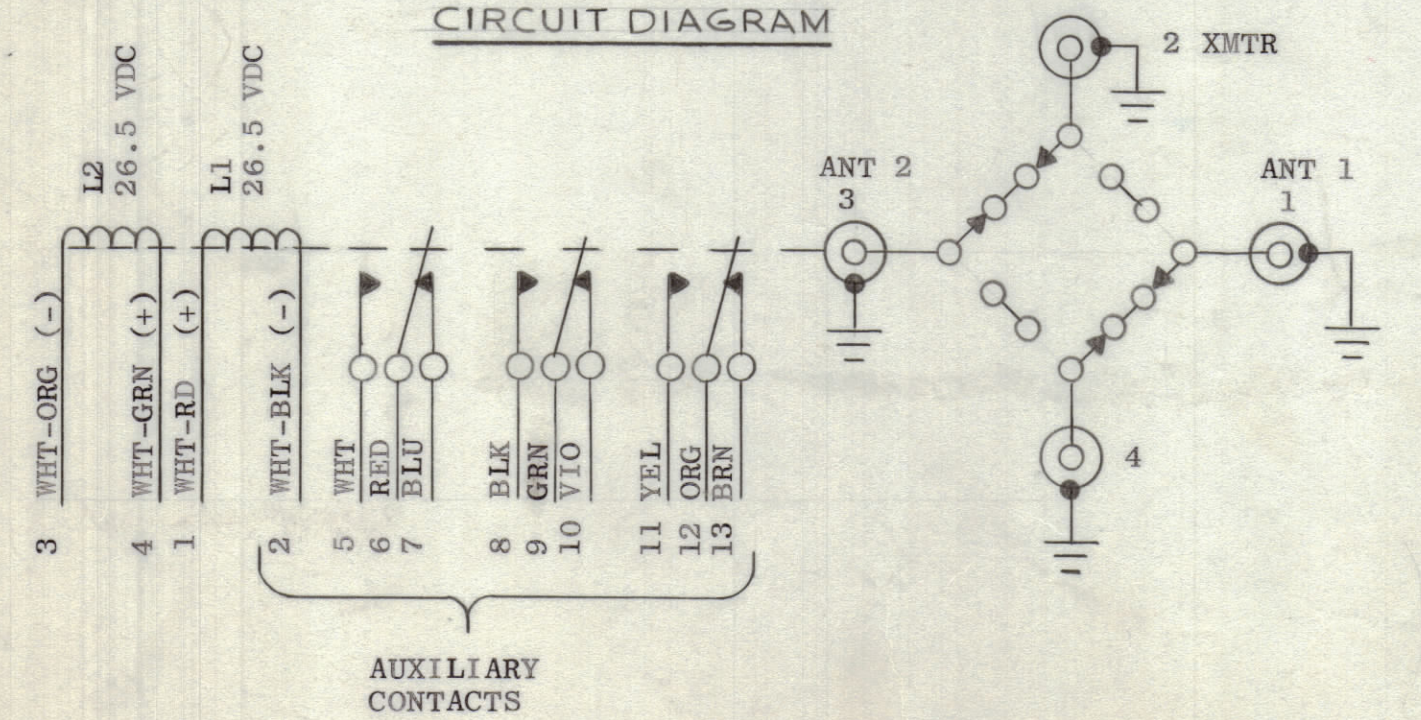
SPECIFICATIONS
ELECTRICAL CHARACTERISTICS
 COAXIAL VACUUM SWITCH: TYPICAL VALUES
 CONTACT CONFIGURATION: 4 POLE TRANSFER
 FREQUENCY RANGE: 0 TO 600 MC
 CHARACTERISTIC IMPEDANCE: 50 OHMS
 VSWR: 1.1 TO 1 MAXIMUM @ 600 MC
 1.02 TO 1 MAXIMUM @ 30 MC
 CROSSTALK: GREATER THAN 75DB ISOLATION @ 30 MC
 TIME TO ACTUATE: 30 MILLISECONDS MAXIMUM
 INSERTION LOSS: LESS THAN 0.1 DB TO 600 MC

POWER RATING (ALL POWER RATINGS ARE AT 23°C. RISE OVER AMBIENT TEMPERATURE OF 27°C.) (SEE CHART)

AUXILIARY CONTACTS
 CONTACT CONFIGURATION : SPDT-DPDT-3PDT (OPTION)
 115/230VAC - 60 CYCLES - 7 AMPS (RESISTIVE)
 28VDC - 7 AMPS (RESISTIVE); 4 AMPS (INDUCTIVE)

ACTUATOR CHARACTERISTICS (INTERMITTENT DUTY LATCHING TYPE ELECTRICAL/MANUAL)
 ACTUATING VOLTAGE: 26.5 VDC
 OPENING COIL RESISTANCE: 18.8 OHMS
 CLOSING COIL RESISTANCE: 17.9 OHMS
 MAXIMUM AVERAGE WATTAGE: 3 WATTS
 OPENING COIL INDUCTANCE (OPEN POSITION): 10.2 MILLIHENRIES
 CLOSING COIL INDUCTANCE (OPEN POSITION): 11.5 MILLIHENRIES
 OPENING COIL INDUCTANCE (CLOSED POSITION): 11.6 MILLIHENRIES
 CLOSING COIL INDUCTANCE (CLOSED POSITION): 13.0 MILLIHENRIES

CIRCUIT DIAGRAM



NOTE:
 POSITION SHOWN INDICATES CONNECTIONS 1 TO 4 AND 2 TO 3 WITH L2 ENERGIZED (POSITION 1)
 REVERSE POSITION INDICATES CONNECTIONS 1 TO 2 AND 3 TO 4 WITH L1 ENERGIZED (POSITION 2)
 HOOK UP INSTRUCTIONS TO APPEAR ON UNIT

STANDARD DRAWING

NOTES

TSTG-2.5K		ASS'Y. NO.
Q'TY./UNIT	MODEL USED ON	CODE
SCALE		S401-48
THE CONTENTS OF THIS DRAWING ARE THE EXCLUSIVE PROPERTY OF THE TECHNICAL MATERIEL CORP. ITS UNAUTHORIZED USE OR REPRODUCTION IN WHOLE OR IN PART IS STRICTLY FORBIDDEN.		

REQ'D.	ITEM	PART NUMBER	DESCRIPTION	SYMBOL
BUDETTI LIST OF MATERIAL				
MATERIAL		THE TECHNICAL MATERIEL CORP. MAMARONECK, NEW YORK		
FINISH		TITLE RELAY, COAXIAL, VACUUM		
UNLESS OTHERWISE SPECIFIED DIMENSIONS ARE IN INCHES AND INCLUDE CHEMICALLY APPLIED OR PLATED FINISHES	DRAWN J. LESHINSKI	DATE 8/31/66	FINAL APPROVAL DATE 10/20/66	
DECIMALS .X ± .05 .XX ± .01 .XXX ± .005	TOLERANCES	FRACTIONS ± 1/64 ANGLES ± 0° 30'	ELECT. DES. MECH. DES.	DATE 10/12/66 SHEET REV. LTR.

RL177