

| AUXILIARY CONTACT CODE |       |       |       |       |
|------------------------|-------|-------|-------|-------|
| CODE                   | AUX 1 | AUX 2 | AUX 3 | AUX 4 |
| A                      |       | NO    | NO    |       |
| B                      |       | NC    | NC    |       |
| C                      |       | NO    | NC    |       |
| D                      | NO    | NO    | NO    |       |
| E                      | NC    | NC    | NC    |       |
| F                      | NO    | NO    | NC    |       |
| G                      | NC    | NC    | NO    |       |
| H                      | NO    | NO    | NO    | NO    |
| J                      | NC    | NC    | NC    | NC    |
| K                      | NO    | NO    | NC    | NC    |
| L                      | NO    | NO    | NO    | NC    |

A  
RL17

| REVISIONS |                   |        |            |       |           |
|-----------|-------------------|--------|------------|-------|-----------|
| SYM       | DESCRIPTION       | DATE   | E.M.N. NO. | DRAFT | CHKD APPD |
| A         | REVISED & REDRAWN | 6.8.66 | 16352      | WFO   |           |

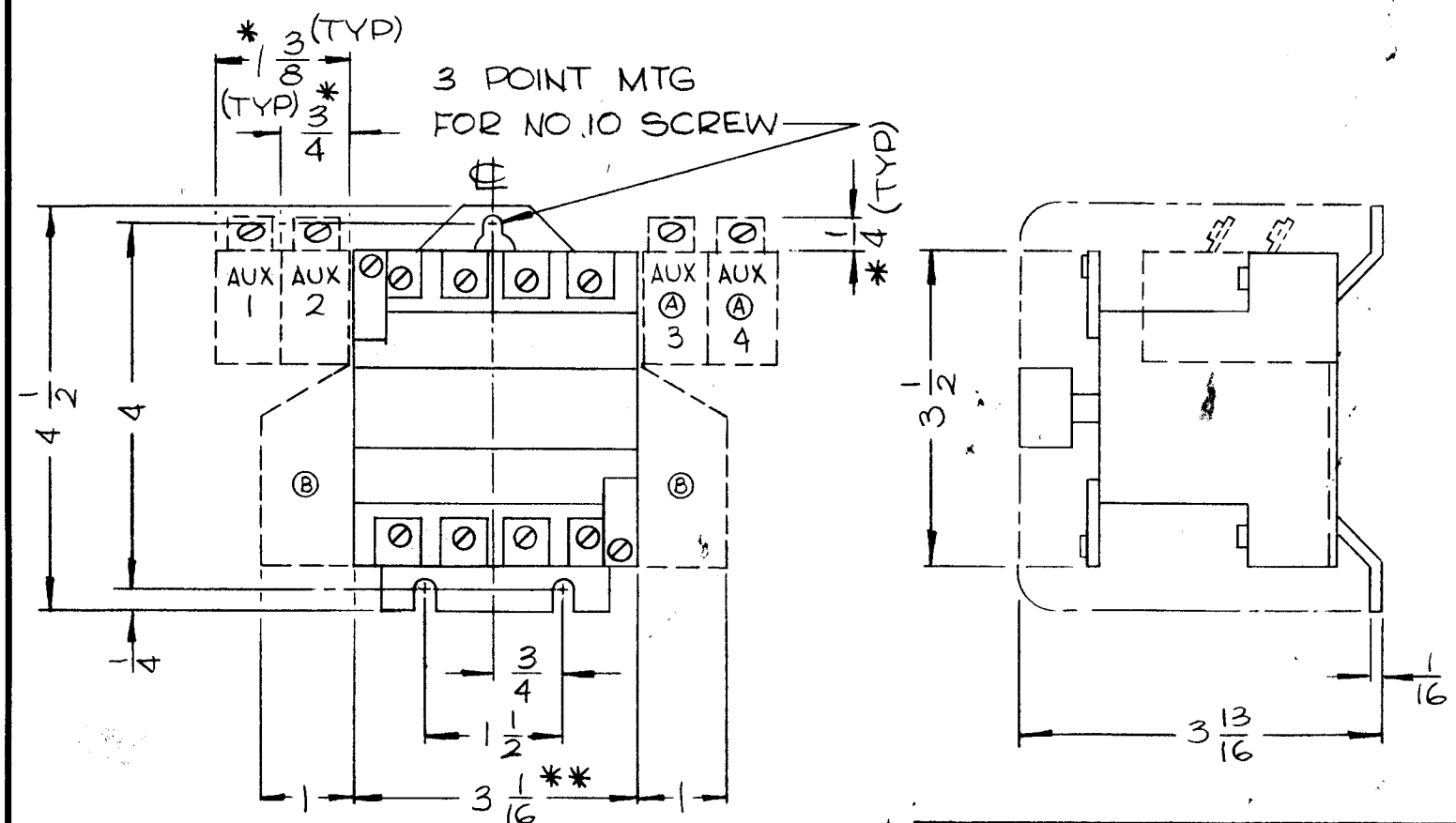
ELECTRICAL SPEC.

NO. OF POLES : 4  
 CONTACT NEMA SIZE : 1  
 CONTACT CURRENT RATING : 30AMPS  
 CONTACT VOLTAGE RATING : 600 VAC  
 AUXILIARY CONTACT RATING : 10AMPS AT 600VAC  
 ENCLOSURE TYPE : OPEN  
 COIL VOLTAGE : 208 VAC  
 COIL FREQUENCY : 50CPS OR 60 CPS PER TMC PART NUMBER

TMC PART NO. TO BE IN FOLLOWING FORM

RL17-1 A 50

TMC BASIC PT/NO → AUX CONTACT → ADD ONLY  
 W/O AUX. CONTACTS CODE WHEN REQ WHEN 50CPS  
 (SEE CHART) COIL REQ



\*\* ADD 1/2 ON EACH SIDE FOR ELECT. CLEARANCE  
 \* ADD 1/2 FOR ELECTRICAL CLEARANCE

NOTES

|   |                           |            |
|---|---------------------------|------------|
| TSTA-2.5K   |                           | API29      |
| Q'TY./UNIT  | MODEL USED ON             | ASS'Y. NO. |
| DO NOT SCALE  | S40(-40) (TYPE CRI05C003) |            |
| THE CONTENTS OF THIS DRAWING ARE THE EXCLUSIVE PROPERTY OF THE TECHNICAL MATERIEL CORP. ITS UNAUTHORIZED USE OR REPRODUCTION IN WHOLE OR IN PART IS STRICTLY FORBIDDEN. |                           |            |

| REQ'D.  | ITEM | PART NUMBER  | DESCRIPTION  | SYMBOL         |
|---|------|--|--------------|----------------|
| LIST OF MATERIAL  |      |  |              |                |
| MATERIAL  |      | THE TECHNICAL MATERIEL CORP.<br>MAMARONECK, NEW YORK |              |                |
| FINISH  |      | TITLE<br>CONTACTOR, MAGNETIC                         |              |                |
| UNLESS OTHERWISE SPECIFIED<br>DIMENSIONS ARE IN INCHES AND INCLUDE<br>CHEMICALLY APPLIED OR PLATED FINISHES |      | DRAWN WFO  | DATE 6.8.66  | FINAL APPROVAL |
|   |      | CHECKED JCB  | DATE 6/13/66 | DATE 6/13/66   |
|   |      | ELECT. DES.  | DATE         | REV. LTR. A    |
|   |      | MECH. DES.   | DATE         | SHEET          |