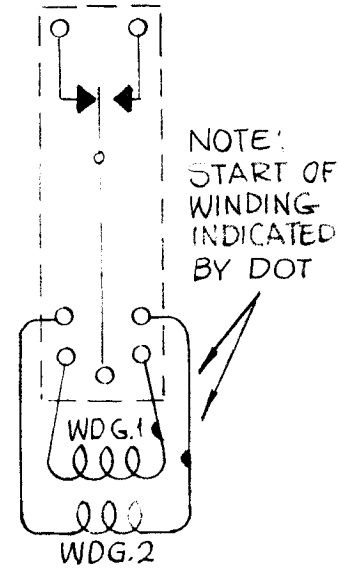
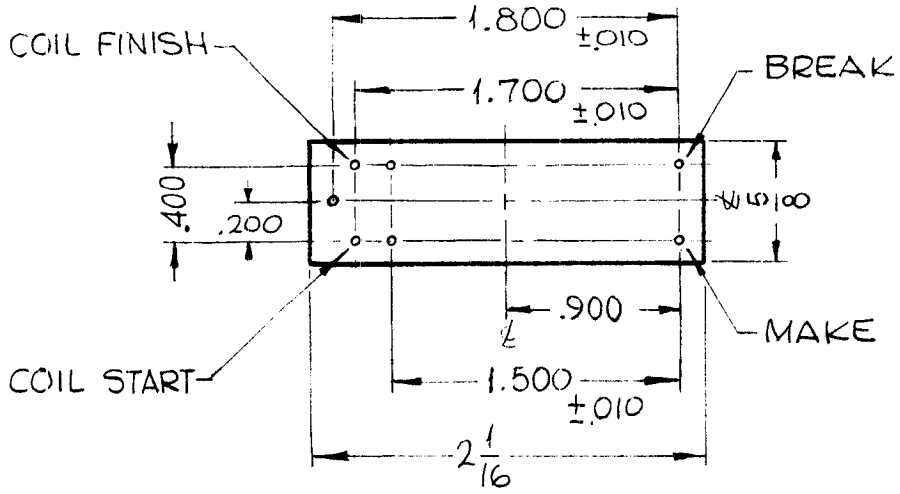
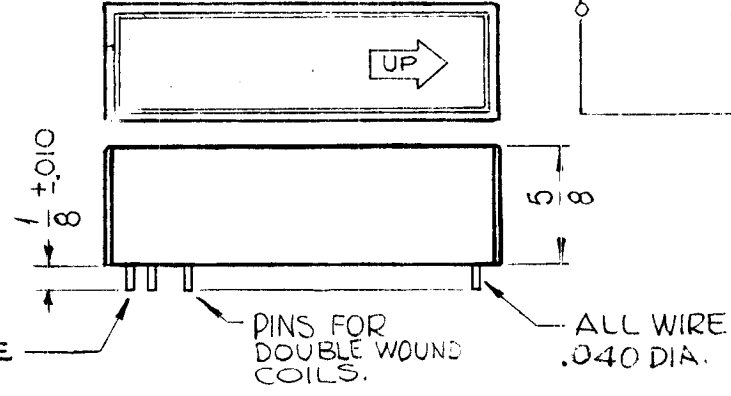
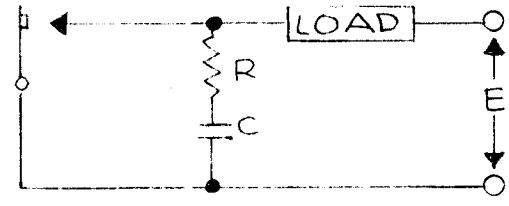


TMC PART NO. MFG PART NO.
 RL167-1 HG5M52112N00

REQ. PER UNIT USED ON
 MODEL ASS'Y. NO. DATE
 RT1A-1 9-22-64

RL167 B

TO BE STAMPED WITH
 TMC PART NUMBER
 AND "UP" DIRECTION.



NOTE:
 START OF
 WINDING
 INDICATED
 BY DOT

ELECTRICAL SPECS:

COIL:
 WINDING #1 250 OHMS ± 10% 2570 TURNS ± 3% 39 GA. BELDURE
 WINDING #2 250 OHMS ± 10% 2570 TURNS ± 5% 39 GA. BELDURE

TEST DATA: OPERATE RELEASE
 WINDING #1 5.85 MA 5.85 MA
 WINDING #2 5.85 MA 5.85 MA

CONTACTS:
 2 AMPS MAX, 500V MAX.
 $C = \frac{I^2}{10} \mu f$
 $R = \frac{E}{10I(1 + \frac{50}{E})} \text{ OHMS}$

NOTES:
 PLUS POLARITY APPLIED TO START OF EITHER COIL WINDING WILL CLOSE & LATCH THE CONTACTS SHOWN OPEN:
 RELAY ADJUSTED FOR 1% MAX. UNBALANCE AT 60 CYCLES AC, 120V, 4000 Ω IN SERIES WITH COIL.

B	MFG. PIN CHANGED PER ENM	8/9/77	21564	K.P.	*	
A	MFG. PIN WAS HG5X5022 NP-179 RELOCATED. NOTE ADDED R= WAS 5/10I(1+50)	11/12/65	14971	Y.V.	82	82
Ø	ORIGINAL RELEASE FOR PRODUCTION	9-23-64	Ø	92		
X	EXPERIMENTAL RELEASE	9-17-64	2	SRG		
SYM	DESCRIPTION	DATE	CH. NO.	DRAFTS	CHECKER	ENG. APP.
UNLESS OTHERWISE SPECIFIED DIMENSIONS ARE IN INCHES AND INCLUDE CHEMICALLY APPLIED OR PLATED FINISHES		SCALE	1:1			
DECIMALS .X ± .05 .XX ± .01 .XXX ± .005	TOLERANCES	FRACTIONS ± 1/64 ANGLES ± 0° 30'	CODE	[REDACTED]		

REQ. ITEM	PART NO.	F. EATON	DESCRIPTION	SYMBOL
STOCK SIZE		THE TECHNICAL MATERIEL CORP. MAMARONECK. NEW YORK		
SEE SPEC		RELAY, MERCURY-WETTED CONTACT		
MATERIAL				
TYPE & TEMPER	HEAT TREAT. SPEC.	DRAWN	CHECKED	FINAL APPROVAL
SEE SPEC		SRG	9-23-64	[Signature]
FINISH & SPEC. NO.		ELEC. DES. APP.	MECH. DES. APP.	
		9/23/64	9/23/64	RL167 B