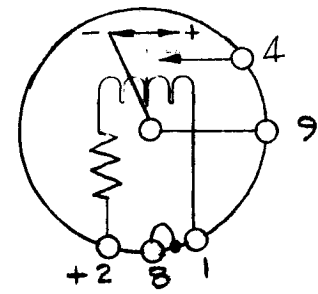
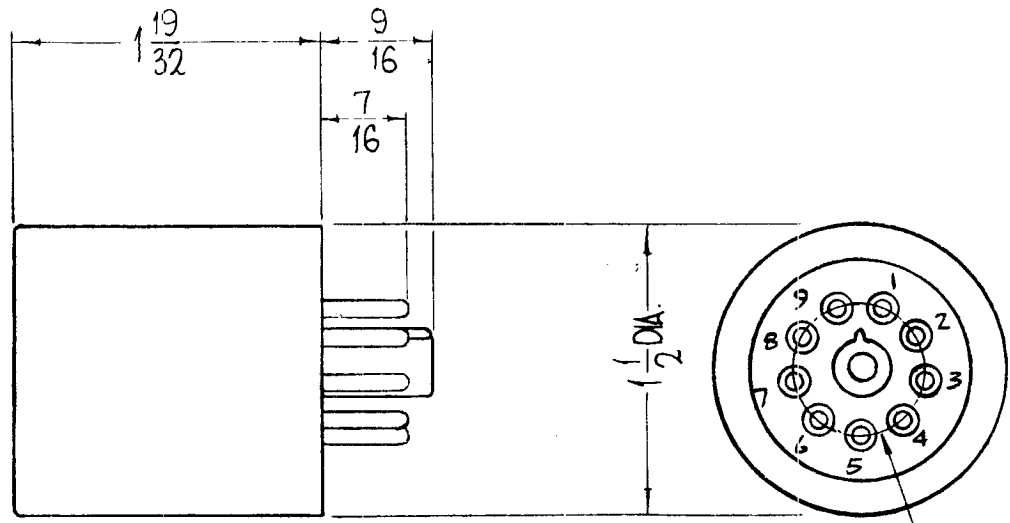


STANDARD DRAWING

REQ. PER UNIT	USED ON			RL-158 A
	MODEL	ASS'Y. NO.	DATE	
1	SWCH-1		3-30-64	



SCHEMATIC

MECHANICAL SPECS:
 CAN - CORROSION RES. (ALUMINUM)
 CONTACTS - NON-LOCKING, PLATINUM
 FACTORY ADJUSTED TO WITHIN 5%
 WEIGHT - 6.0 OUNCES
 CONTACT FORM A (SPST)
ELECTRICAL SPECS:
 INSULATION BREAKDOWN - 400 V.D.C. OR 300 V.A.C.
 OPERATION - IT WITHSTANDS OPER. AT 50 LB/SQ. IN. & VACUUMS TO 2.5" MERCURY, STORAGE UP TO 185°F.
 CALIBRATION - NORMAL CAL. IS FOR VERTICAL MTG. AT 77°F
 CONTACTS - CLOSED 50UA ± 5%
 RES 2700 ± 20%, COIL RATING - 100 UA

69 PIN CIRCLE

REQ. ITEM	PART NO.	F. BUDETTI			DESCRIPTION	SYMBOL	
A	ON SCHEMATIC POS. SPST WAS 6PDT, CONTACT FORM A ADD. SQ. IN. WAS SQ. ± 20% = 5% COIL RATED	6216814292	D.V.V.	Job	RELAY, "HI-SEN"		
O	ORIGINAL RE. EASE	428.64	WB				
SYM	DESCRIPTION	DATE	CH. NO.	DRAFTS	CHECKER	ENG. APP.	
UNLESS OTHERWISE SPECIFIED DIMENSIONS ARE IN INCHES AND INCLUDE CHEMICALLY APPLIED OR PLATED FINISHES		SCALE		MATERIAL			
		S401-44 (MODEL 800C)		TYPE & TEMPER HEAT TREAT. SPEC.			
DECIMALS X ± .05 .XX ± .01 .XXX ± .005		FRACTIONS ± 1/64 ANGLES ± 0° 30'		CODE C		FINISH & SPEC. NO.	
TOLERANCES				DRAWN		CHECKED	
				John C. Biele		RXL	
				ELEC. DES. APP.		MECH. DES. APP.	
				OJB		WB	
				RL-158		A	