

TMC PART NO.	MFRS. PART NO.	WIRING DIAGRAM (SEE PICTORIAL)	DIMENSIONS				DC RESIST. OHM ± 10% SPEC. 2.B.(2)	OPER. VOLT SPEC. 2.B.(3)	COIL DATA COIL PULL IN DROP OUT VOLT	CONTACT RATING (POWER, RF AT 50% IMP)	QUAN. OF TERM.	TERMINAL TYPE CONNECTOR	MAX. ACTUATION TIME (SPEC. 5) MILLISECONDS	
			A	B	C	D							OPER.	REL.
RL157-1	317-010215-8	A	2	1-9/16	11/16	23/16	550	115 VAC	93VAC	100W	3	BNC	20	20
RL157-2	317-010202-2	A	2	1-9/16	11/16	1-9/16	75	12 VDC	10VDC	100W	3	BNC	20	20
RL157-3	317-010202-5	A	2	1-9/16	11/16	1-9/16	5000	100 VDC	80VDC	100W	3	BNC	20	20

REVISIONS						
ZONE	SYM	DESCRIPTION	DATE	E.M.N. NO.	DRAFT	APPD
A		CLERICAL CHANGE (S401 WAS -227)	3-5-65			
B		RL157-3 ADDED, COIL DROP OUT DELETED, 10VDC WAS 9VDC ON -2, MFG REF WAS S401-227	1-19-66	15584		
C		SOLDER LUG RELOCATED	12.6.66	17360		

SPECIFICATIONS

1. CONTACT DATA:

A. ARRANGEMENT - SPDT

B. ELEC. RATINGS:

(1) AC - NOT RATED

(2) DC - NOT RATED

(3) POWER (RF): SEE CHART

C. RESISTANCE: .05 OHMS MAX.

2. COIL DATA:

A. NO OF WINDINGS - ONE

B. COIL OPERATING SPECS:

(1) TYPE OF CURRENT - SEE CHART

(2) DC RESISTANCE - SEE CHART

(3) OPER. VOLTAGE - SEE CHART

(4) OPER. CURRENT - N/A

(5) POWER AT 25°C. - N/A

(6) POLARIZATION - NONE

(7) DIFFERENTIALLY WOUND - NO

3. LATCHING FEATURE - NONE

4. TERMINAL DATA:

A. QUANTITY - SEE CHART

B. TYPE - SEE CHART

C. ARRANGEMENT - SEE WIRING DIAGRAM

5. ACTUATION TIME:

A. OPER. TIME - SEE CHART

B. RELEASE TIME - SEE CHART

C. ADJUSTMENT - NONE

6. OPER. TEMP. RANGE: -55°C TO +85°C

7. DUTY - CONTINUOUS

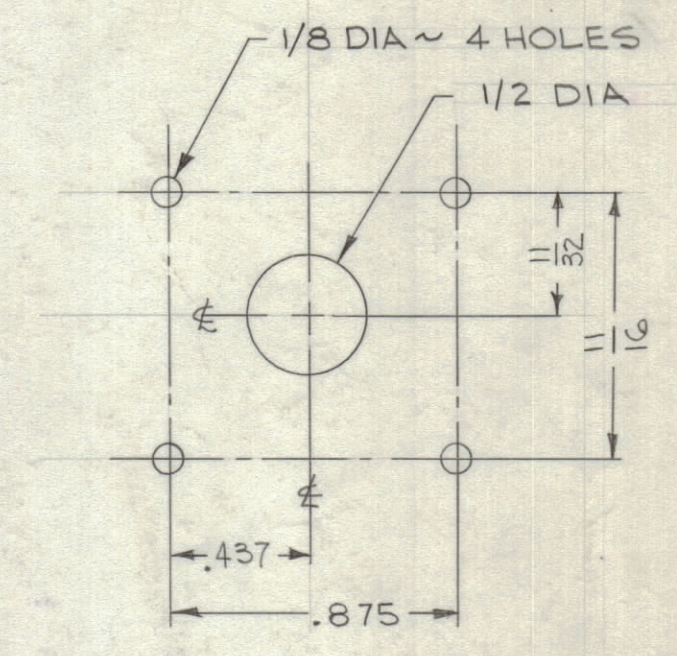
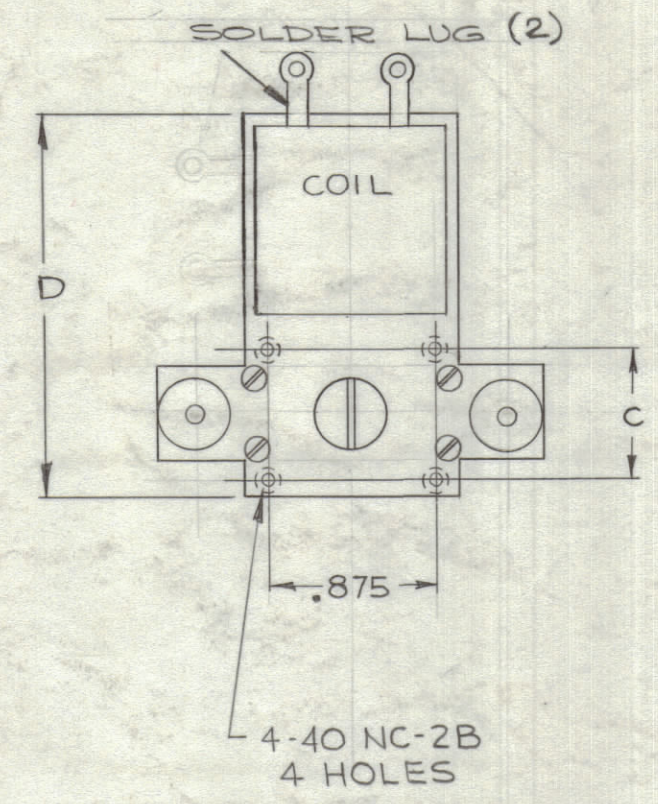
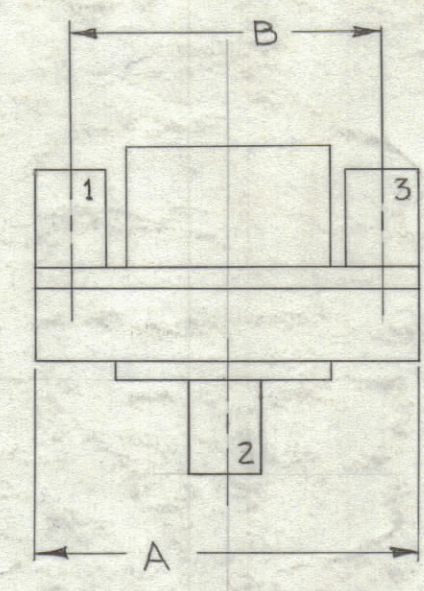
8. CONSTRUCTION DATA:

A. CASE DATA:

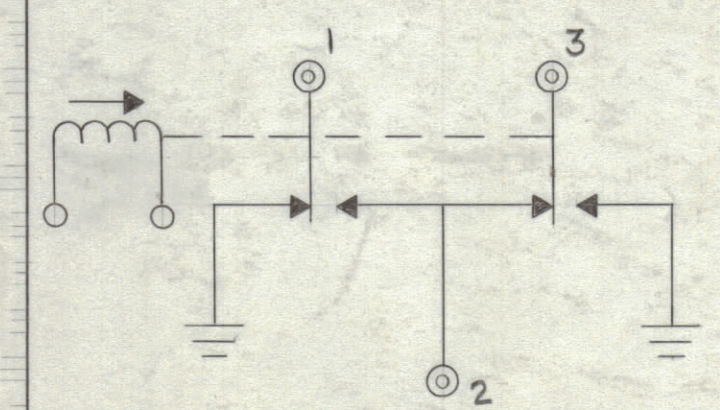
(1) MAT'L & FINISH - BRASS, SILVER PLATED

(2) SEALING - NONE

B. METHOD OF ARC QUENCHING - AIR



MOUNTING DETAIL



A

WIRING DIAGRAMS (UNENERGIZED)

RL157
C

REQ'D.	ITEM	PART NUMBER	DESCRIPTION	SYMBOL
KOHN LIST OF MATERIAL E3037				
MATERIAL		SEE SPEC.	THE TECHNICAL MATERIEL CORP. MAMARONECK, NEW YORK	
FINISH		SEE SPEC.	TITLE RELAY, ARMATURE, COAXIAL	
UNLESS OTHERWISE SPECIFIED DIMENSIONS ARE IN INCHES AND INCLUDE CHEMICALLY APPLIED OR PLATED FINISHES		DRAWN AD	DATE 9-7-63	FINAL APPROVAL BP
DECIMALS X ± .05 .XX ± .01 .XXX ± .005		CHECKED AD	DATE 8-20-63	DATE 9-23-63
FRACTIONS ± 1/64 ANGLES ± 0° 30'		ELECT. DES. R KOHN	DATE 9-23-63	DATE 9-23-63
TOLERANCES		MECH. DES. R KOHN	DATE 9-23-63	DATE 9-23-63

QTY./UNIT	MODEL USED ON	ASSY. NO.
SCALE NONE	CODE 5401-369 (317)	AX-413

NOTES

THE CONTENTS OF THIS DRAWING ARE THE EXCLUSIVE PROPERTY OF THE TECHNICAL MATERIEL CORP. ITS UNAUTHORIZED USE OR REPRODUCTION IN WHOLE OR IN PART IS STRICTLY FORBIDDEN.

STANDARD DRAWING