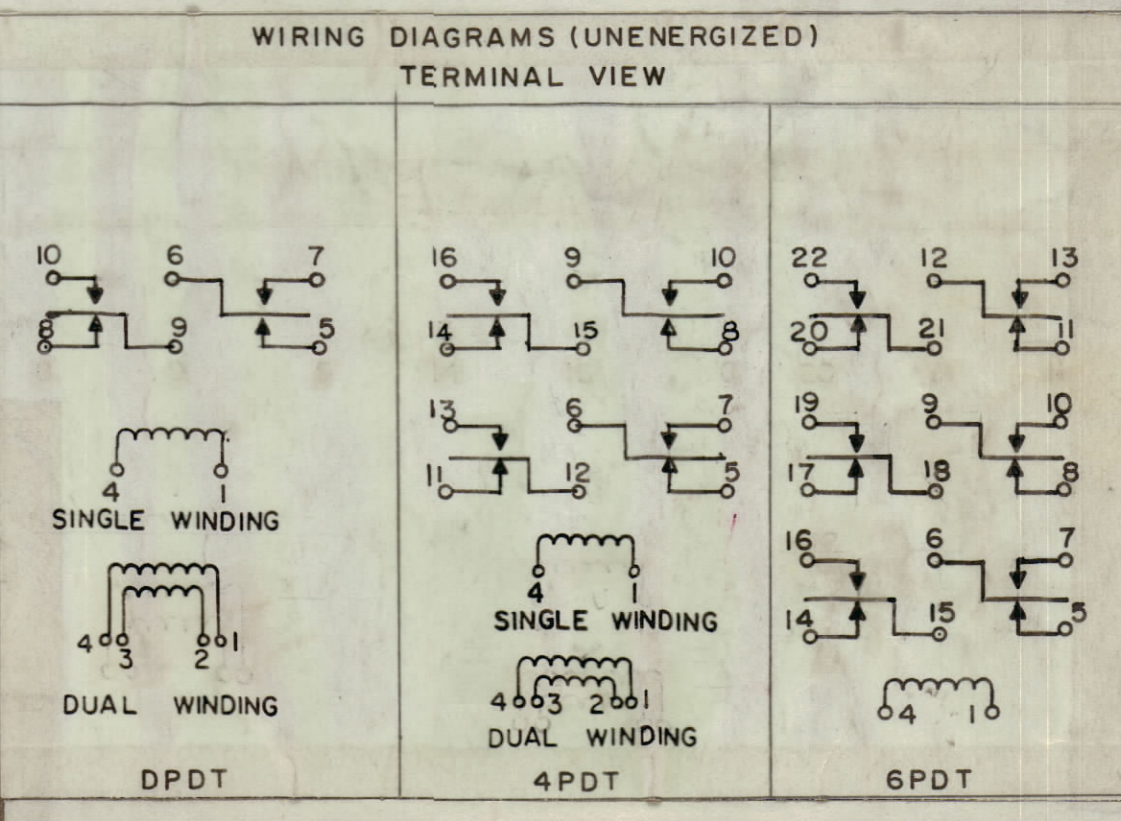
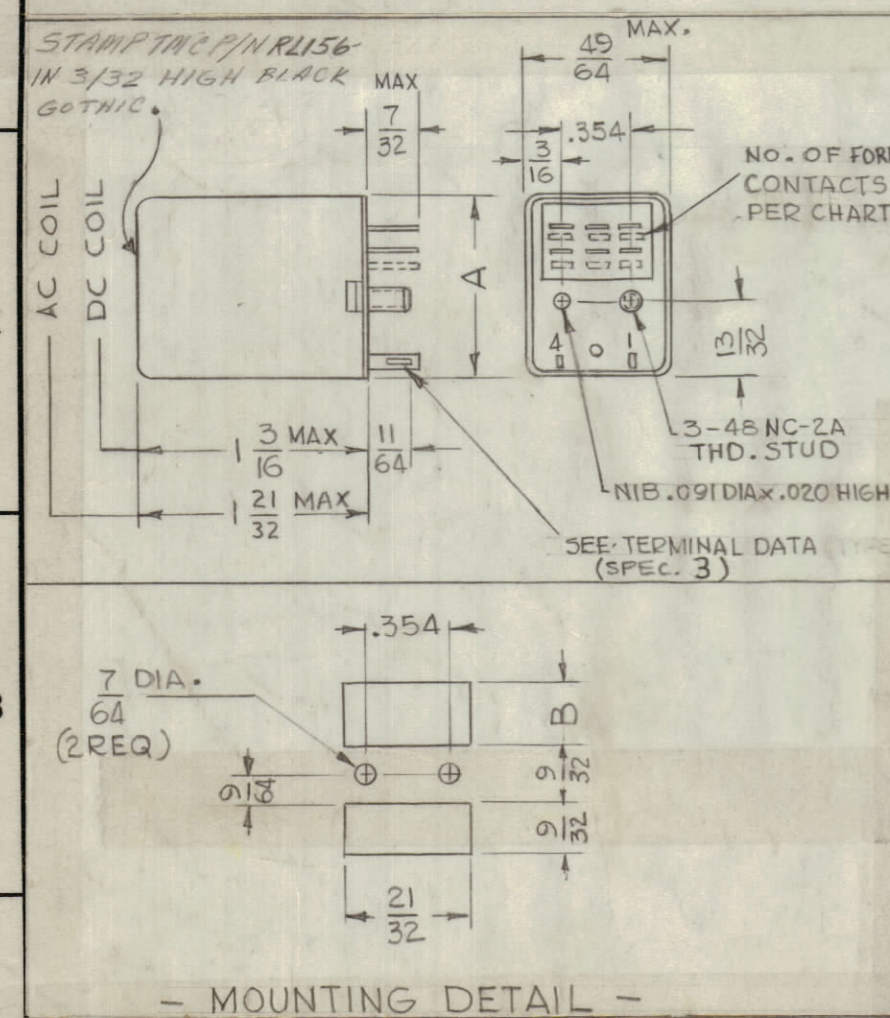


REVISIONS						
ZONE	SYM	DESCRIPTION	DATE	E.M.N. NO.	DRAFT	CHKD
	C	REVISED & REDRAWN FROM #2 SIZE; RL 156-8, -9, -10, & -11 ADDED.	2-17-65	13504	JK	JCB
	D	CHART, MFR. P/N ON (-9) & (-10) REVERSED; "FORM" ADD. TO "QTY. OF CONTACTS" COL. & ALL QTY'S, CHG. "QTY OF COIL CONT." COL. ADD; P/CT: TERM. DATA SPEC. # WAS 4; "FORM" ADD. TO NO. OF CONT./CHART.	5-4-65	13935	JK	JCB
	E	LINE RL 156-12 ADDED	8-20-65	14656	H.V.V.	JCB
	F	-8 WAS T154-, -7 DELETED, TMC STAMP-13 ADDED	10/20/65	15071	H.V.V.	JCB
	G	RL 156-14, 15, 16 ADDED	12/14/65	15345	H.V.V.	JCB
	H	RL 156-17, 18 ADDED	4-22-66	16122	H.V.V.	JCB
	J	-18 ADDED P/N CHART; NOTE 9 ADDED AND P/N CHART CLARIFIED	5-18-66	16260	H.V.V.	JCB
	K	RL 156-20 ADDED	9-30-66	16923	H.V.V.	JCB

TMC PART NO.	MFRS. PART NO.	WIRING DIAGRAM TYPE & CONTACT ARRANGEMENT	DIMENSIONS		DC RESIST. OHMS ± 10%	OPER. VOLT DC * VAC	COIL DATA		QUAN. OF FORM CONTACTS	MAX. ACTUATION TIME		NO. OF WINDINGS	LATCHING	QTY. OF COIL CONTACTS	CONTACT RAT-ING (AMPS) @ 25 VDC RES OR 115 VAC RES	
			A MAX. (LENGTH)	B (MTG. CUTOUT)			MAX. PULL-IN VOLTS	NOM. POWER @ 25 MW *AV PULL-IN PWR		OPER. CURR. MA * MAX PULL-IN CUR	OPER. REL.					REL.
RL 156-1	TF154-2C 24VDC	DPDT	31/32	11/32	700	24	18	700	35	6	15	8	1	NO	2	3AC 5 DC
RL 156-2	T154-4C 12VDC	4PDT	1-11/64	9/16	185	12	9.6	700	65	12	15	8	1	NO	2	1AC 2 DC
RL 156-3	T154-6C 12VDC	6PDT	1-3/8	25/32	90	12	9.6	1500	130	18	15	8	1	NO	2	1AC 2 DC
RL 156-4	TS154-2C 4.1MADC	DPDT	31/32	11/32	5000	—	—	85	4.1	6	15	8	1	NO	2	.5AC 1 DC
RL 156-5	TF154-6C 24VDC	6PDT	1-3/8	25/32	430	24	18	1500	56	18	15	8	1	NO	2	3AC 5 DC
RL 156-6	T154X620	6PDT	1-3/8	25/32	185	12	9.6	700	60	18	15	8	1	NO	2	.5AC 1 DC
RL 156-7	T154-2C12VDC	DPDT	31/32	11/32	DELETED USE RL156-13	—	—	—	—	—	—	—	—	—	—	—
RL 156-8	TF154-4C24VDC	4PDT	1-11/64	9/16	700	24	18	700	35	12	15	8	1	NO	2	3AC 5 DC
RL 156-9	TF351-2C2/24VDC	DPDT	15/16	11/32	485 EACH COIL	24	18	1200	49 EACH COIL	6	10	10	2	YES	4	3AC 5 DC
RL 156-10	T351-4C2/24VDC	4PDT	1-11/64	9/16	485 EACH COIL	24	18	1200	49 EACH COIL	12	10	10	2	YES	4	.5AC 1 DC
RL 156-11	T255-2C220VAC	DPDT	31/32	11/32	6000	220*	—	2400	—	6	—	—	1	NO	2	1AC 2 DC
RL 156-12	T255-4C6VAC	4PDT	1-1/64	9/16	6.4	6*	4.7	1200	190	12	—	—	1	NO	2	1AC 2 DC
RL 156-13	TF154-2C12VDC	DPDT	31/32	11/32	185	12	9.6	700	65	6	15	8	1	NO	2	3AC 5 DC
RL 156-14	TS154-2C5.8MADC	DPDT	31/32	11/32	2500	—	—	85*	5.8*	6	15	8	1	NO	2	.5AC 1 DC
RL 156-15	TS154-4C13MADC	4PDT	1-1/64	9/16	1000	—	—	175*	13*	12	15	8	1	NO	2	.5AC 1 DC
RL 156-16	TS154-4C8.4MADC	4PDT	1-1/64	9/16	2500	—	—	175*	8.4*	12	15	8	1	NO	2	.5AC 1 DC
RL 156-17	TS154-2C3.1MADC	DPDT	31/32	11/32	10,000	—	—	85*	3.1*	6	15	8	1	NO	2	.5AC-1DC
RL 156-18	TS154-4C4.5MADC	4PDT	1-11/64	9/16	10,000	—	—	175*	4.5*	12	15	8	1	NO	2	.5AC-1DC
RL 156-19	TS154-2C-8.5MADC	DPDT	31/32	11/32	1000	—	—	85*	8.5*	6	15	8	1	NO	2	.5AC-1DC
RL 156-20	TF154-4C115DC	4PDT	1-11/64	9/16	15,000	115	92	700	.0076	12	15	8	1	NO	2	3AC-5DC



SPECIFICATIONS

- CONTACT DATA: RESISTANCE - 50 MILLIOHMS MAX.
- COIL DATA: DIFFERENTIALLY WOUND - NO
- TERMINAL DATA: TYPE - SOLDER LUG WITH .040 x .080 HOLE. ARRANGEMENT - SEE WIRING DIAGRAM.
- ACTUATION TIME: ADJUSTMENT - NONE
- OPERATION TEMPERATURE RANGE - NOT RATED.
- DUTY - CONTINUOUS
- CONSTRUCTION DATA: CASE DATA: MATERIAL & FINISH - CLEAR HIGH IMPACT STYRENE DUST COVER. SEALING - NONE.
- METHOD OF ARC QUENCHING - AIR.
- MAXIMUM RATED POWER OF COIL: 1.5 WATTS

REF: MATING SOCKET TS171
RETAINER CU163

REQ'D.	ITEM	PART NUMBER	DESCRIPTION	SYMBOL
KOHN LIST OF MATERIAL				
MATERIAL			THE TECHNICAL MATERIEL CORP. MAMARONECK, NEW YORK	
SEE SPECS			TITLE RELAY, ARMATURE	
FINISH			DRAWN G.D.L DATE	
UNLESS OTHERWISE SPECIFIED DIMENSIONS ARE IN INCHES AND INCLUDE CHEMICALLY APPLIED OR PLATED FINISHES			DATE	
DECIMALS .X ± .05 .XX ± .01 .XXX ± .005			DATE 8/26/63	
FRACTIONS ± 1/64 ANGLES ± 0° 30'			DATE 8/26/63	
TOLERANCES			ELECT. DES. RON KOHN	
			MECH. DES. L. GABEL	
			SHEET	
			REV. LTR.	

STANDARD DRAWING

NOTES

1(1,4,5) DDR-5 AUTO TUNE
1(2,-3) TTR-10
1(-1) VLR-1, LFS-1

QTY./UNIT MODEL USED ON ASS'Y. NO.
NO SCALE S401-80 S401-227

THE CONTENTS OF THIS DRAWING ARE THE EXCLUSIVE PROPERTY OF THE TECHNICAL MATERIEL CORP. ITS UNAUTHORIZED USE OR REPRODUCTION IN WHOLE OR IN PART IS STRICTLY FORBIDDEN.