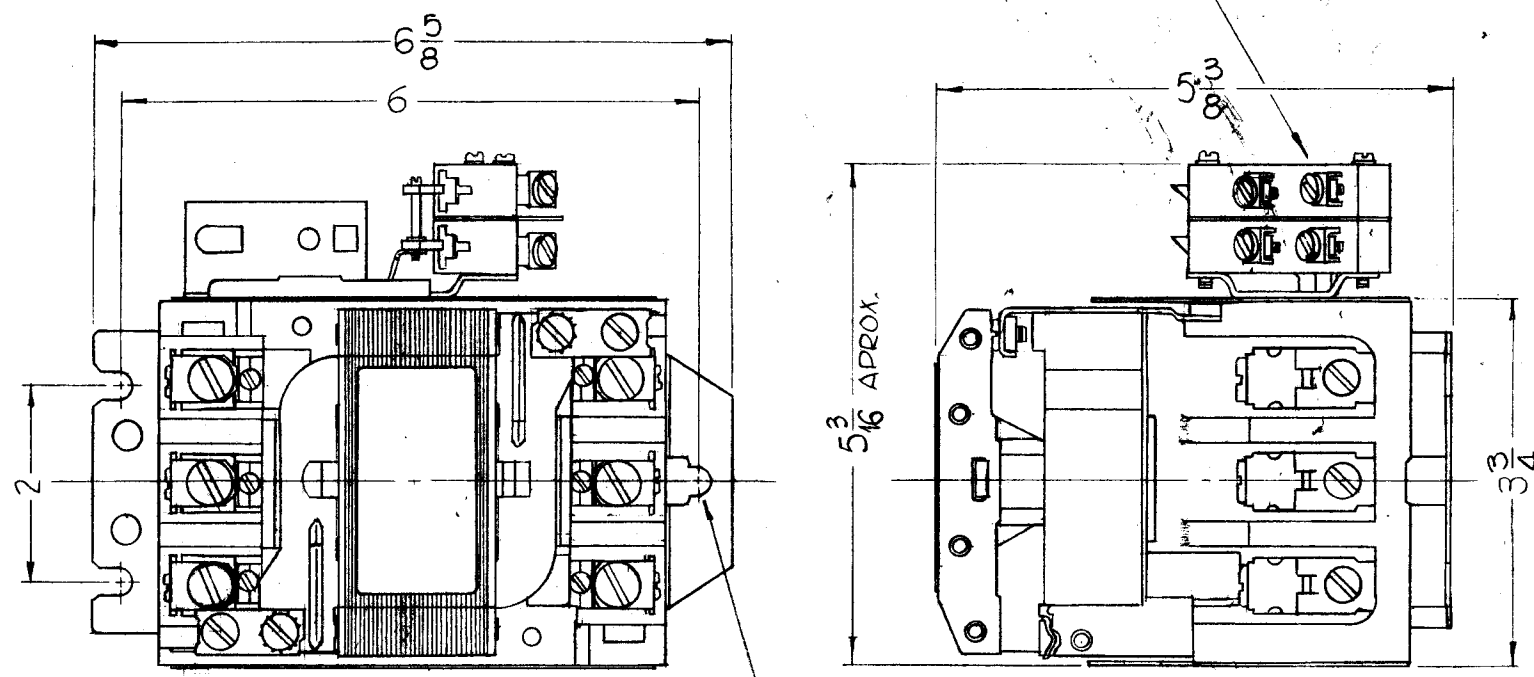


RL152

REVISIONS

SYM	DESCRIPTION	DATE	E.M.N. NO.	DRAFT	CHKD	APPD
0	ORIGINAL RELEASE FOR PRODUCTION	3-2-64		A.M		
A	LEFT BRACKET & C" DIM. DELETED	2-16-64	15777	MPA	JLB	MMR

PLACE SWITCHES IN NORMALLY OPEN POSITION.



(3) MTG. SLOTS FOR 10-32 SCREWS.

SPECIFICATIONS:

MAX. MOTOR H.P.

VOLTS	1PH	3PH
110	3	7 1/2
220	7 1/2	15
440-550	10	25

NEMA ~ SIZE 2  
 MAX. VOLTS ~ 600 AC  
 MAX. AMPS ~ 50 OPEN, 45 ENCLOSED  
 CONTROL VOLTS ~ 208/220  
 CYCLES ~ 60

REQ'D.	ITEM	PART NUMBER	DESCRIPTION	SYMBOL
--------	------	-------------	-------------	--------

LIST OF MATERIAL

MATERIAL	THE TECHNICAL MATERIEL CORP. MAMARONECK, NEW YORK		
FINISH	TITLE RELAY, SOLENOID		

1	GPT-200K	AX 393
Q'TY./UNIT	MODEL USED ON	ASS'Y. NO.
SCALE	CODE C	S401-40 (CR105D000AAE)

UNLESS OTHERWISE SPECIFIED DIMENSIONS ARE IN INCHES AND INCLUDE CHEMICALLY APPLIED OR PLATED FINISHES		DRAWN SRG	DATE 4-9-63	FINAL APPROVAL RJC	DATE
DECIMALS .X ± .05 .XX ± .01 .XXX ± .005		CHECKED JCB	DATE 2/19/64	RL 152	A
TOLERANCES		ELECTRICAL JCB	DATE 2-19-64		

NOTES

THE CONTENTS OF THIS DRAWING ARE THE EXCLUSIVE PROPERTY OF THE TECHNICAL MATERIEL CORP. ITS UNAUTHORIZED USE OR REPRODUCTION IN WHOLE OR IN PART IS STRICTLY FORBIDDEN.