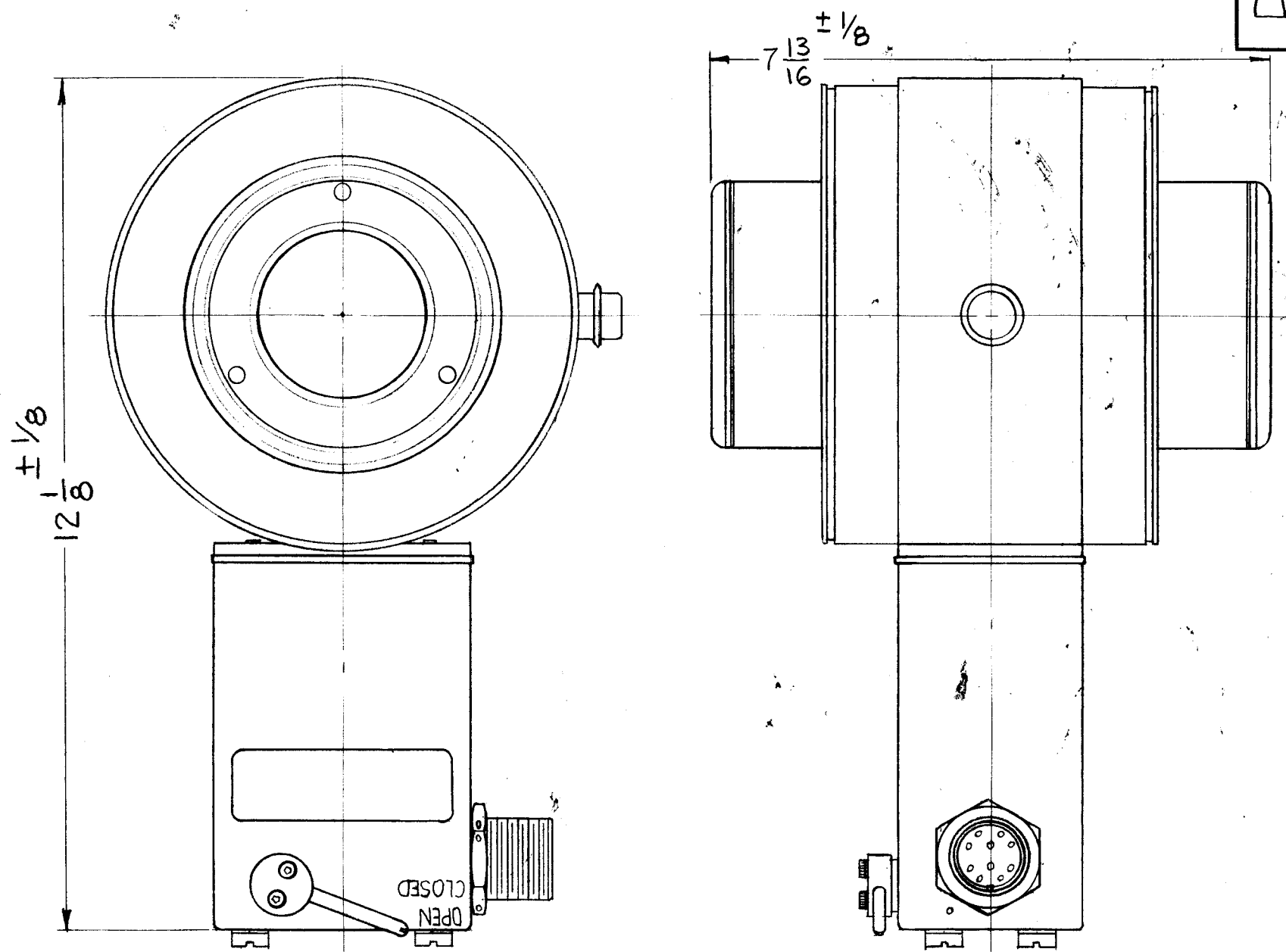


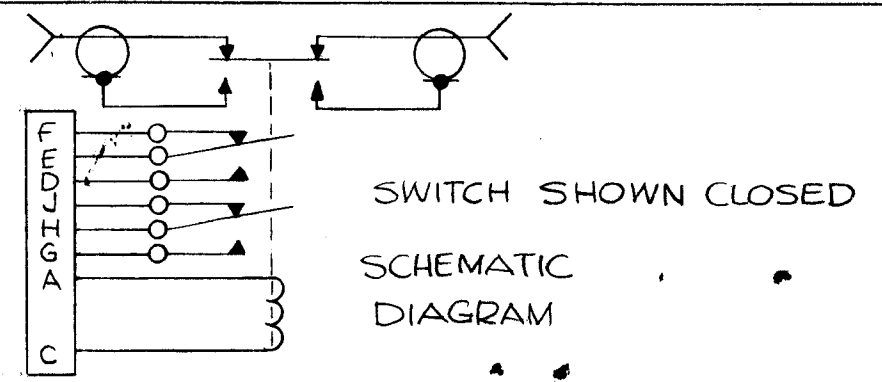
RL149  
A

REVISIONS

SYM	DESCRIPTION	DATE	E.M.N. NO.	DRAFT	CHKD	APPD
0	ORIGINAL RELEASE FOR PRODUCTION	5-15-64		SRG		
A	DIMS 12 1/8 & 7 13/16 WERE 11 1/2 & 7 5/8 - ONSPEC. MAX. REPT. RATE WAS 2 CPS AT 25°C -	12-8-65	15407	G.D.L.	HA	DB



**SPECIFICATIONS:**  
 CHARACTERISTIC IMPEDANCE ~ 50 ohms  
 POWER RATING ~ 325 KW CW / 30 mc.  
 FREQUENCY RANGE ~ 0 TO 100 mc.  
 VSWR ~ 1.02 MAX. AT 30 mc; 1.05 MAX. AT 60 mc.  
 CROSSTALK ~ GREATER THAN -60 db ISOLATION AT 60 mc.  
 ACTUATING VOLTAGE ~ 230 VAC  
 ACTUATOR ~ LATCHING TYPE, ELECTRO-MECHANICAL & MANUAL WITH VISUAL INDICATION.  
 POSITION INDICATORS ~ SPDT OR DPDT AUXILIARY CONTACTS.  
 MAX. REPETITION RATE ~ 1 TRANSFER PER 1.5 SECOND (MINIMUM TIME) AT 25°C & 230 VAC ± 10% INPUT



REQ'D.	ITEM	PART NUMBER	DESCRIPTION	SYMBOL
F. BUDETTI LIST OF MATERIAL				
MATERIAL			THE TECHNICAL MATERIEL CORP. MAMARONECK, NEW YORK	
FINISH			TITLE RELAY, COAXIAL 6 1/8	
UNLESS OTHERWISE SPECIFIED DIMENSIONS ARE IN INCHES AND INCLUDE CHEMICALLY APPLIED OR PLATED FINISHES			DRAWN SRG	DATE 11-11-63
			CHECKED aa	DATE
			ELECT. DES. DB	DATE 5/13/64
			MECH. DES. AK	DATE 5/13/64
			FINAL APPROVAL RL 149	
			SHEET	
			REV. LTR. A	

2	GPT-200K	A 3198
Q'TY./UNIT	MODEL USED ON	ASS'Y. NO.
SCALE 1/2" = 1"	CODE S-401-48	MODEL-RC30A5726A2X(6335)
		SERIAL NO. 7905-1

NOTES

THE CONTENTS OF THIS DRAWING ARE THE EXCLUSIVE PROPERTY OF THE TECHNICAL MATERIEL CORP. ITS UNAUTHORIZED USE OR REPRODUCTION IN WHOLE OR IN PART IS STRICTLY FORBIDDEN.

DECIMALS  
.X ± .05  
.XX ± .01  
.XXX ± .005

TOLERANCES

FRACTIONS  
± 1/64  
ANGLES  
± 0° 30'