

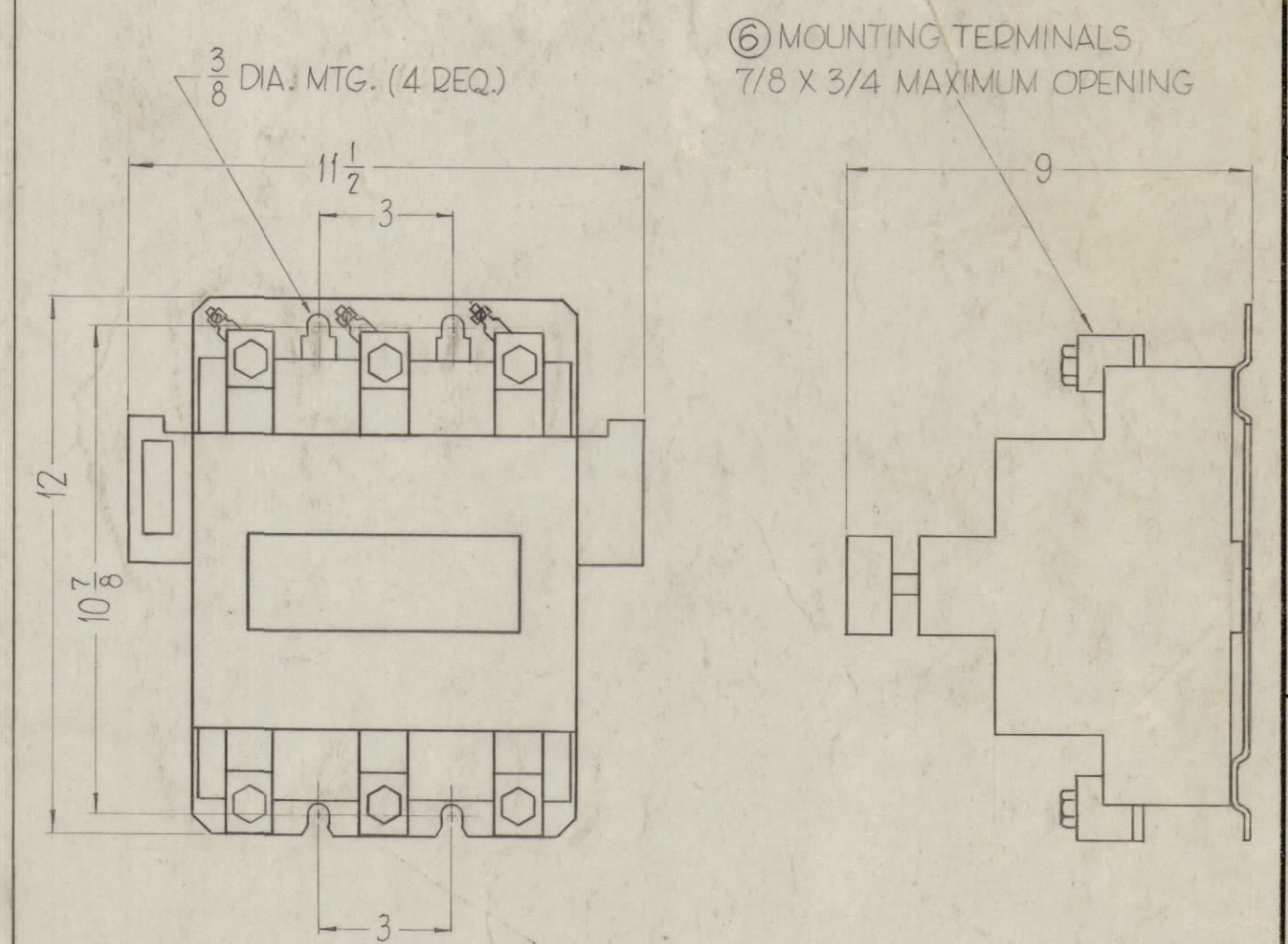
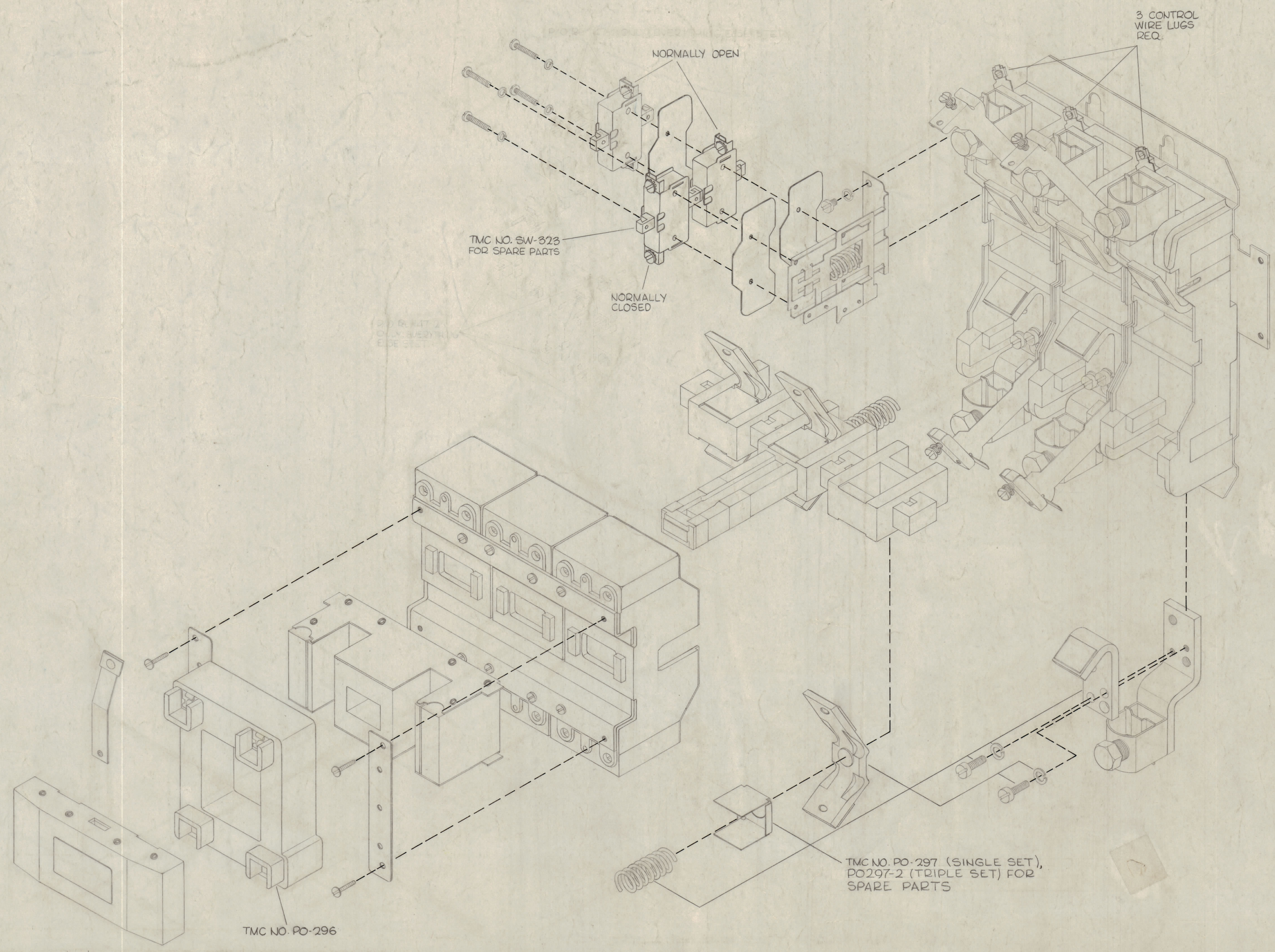
ELECTRICAL SPECIFICATIONS

COIL DATA
 VOLTAGE: 220 VOLTS
 CURRENT: 1.0 AMPS
 FREQ: 60 CPS
 HORSE POWER: 100

CONTACTS
 VOLTAGE: 600 VOLTS
 CURRENT: 300 AMPS
 NEMA SIZE: 5
 NO. OF POLES: 3

AUXILIARY CONTACTS
 QTY: 3
 FORM TYPE: SEE PICTORIAL
 VOLTAGE: 600 VOLTS
 CURRENT: 10 AMP MAX.

MARKING: MFGR BASIC P/N; COIL VOLTAGE AND FREQ; NEMA SIZE AND MAX CURRENT OF CONTACTS



RL-147 A

PO297-2 ADDED TO SPARE PARTS ELEC. SPECS COMPLETELY REVISED ORIGINAL RELEASE FOR PRODUCTION	4-29-66	16177	WHD	gfb
12-147-1 (2 SWITCHES) DELETED PUMP CHANGED TO RL-147-1 (2 SWITCHES) ADDED FOR UNITS	5-18-64			
SYM ZONE DESCRIPTION	DATE	CH. NO.	DRAFTS	CHECKER
UNLESS OTHERWISE SPECIFIED: DIMENSIONS ARE IN INCHES TOLERANCES ON FRACTIONS ± 1/64 DECIMALS ± .005 ANGLES ± 1/2°				
SCALE 5/16" = 1" (CR1056003 AVD)				
MAXIMUM ALLOWABLE TOLERANCES HAVE BEEN DETERMINED AND ANY DEVIATIONS WILL BE CAUSE FOR REJECTION. REMOVE ALL BURRS & SHARP EDGES				

REQ. ITEM	PART NO.	F. BUDETTI	DESCRIPTION	SYMBOL
2	GPT-200K	AP-111		6-5-62
2	GPT-200K	AP-109		6-5-62
REQ. PER UNIT	MODEL	SECTION	ASS'Y. NO.	DATE
USED ON				

THE TECHNICAL MATERIEL CORP. MAMARONECK, NEW YORK	DESCRIPTION	SYMBOL
RELAY CONTACTOR, MAGNETIC WITH SWITCHES	RL-147	A
John C. Biele	Checked	Final Approval
John C. Biele	Checked	Final Approval
ELEC. DES. APP.	MECH. DES. APP.	SHEET OF

NOTES