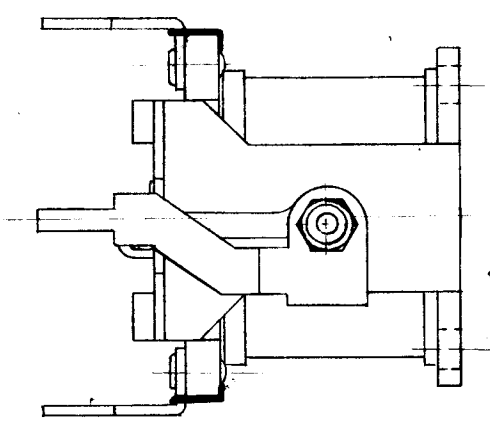
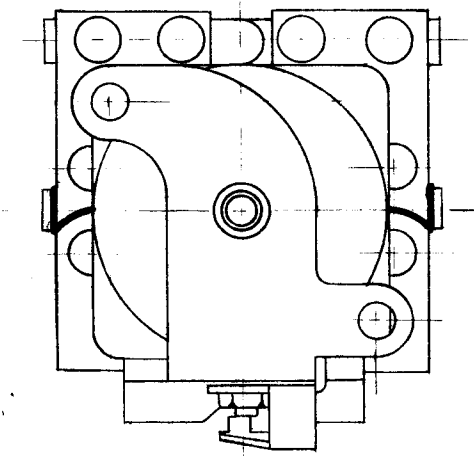
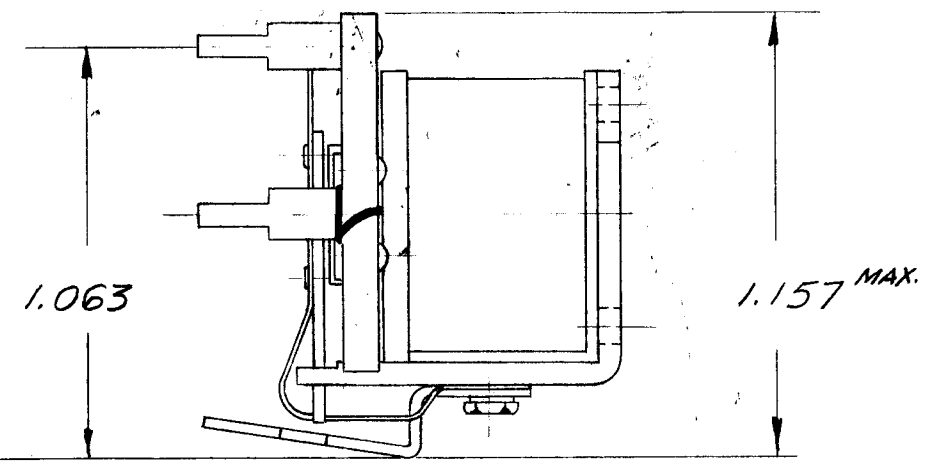
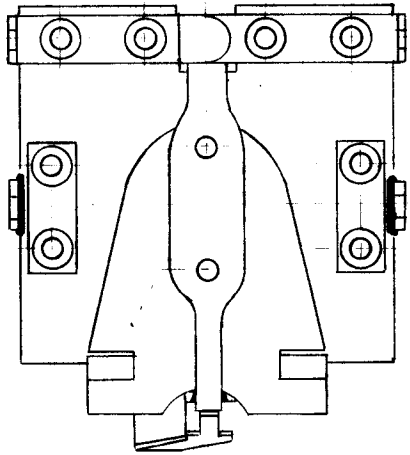
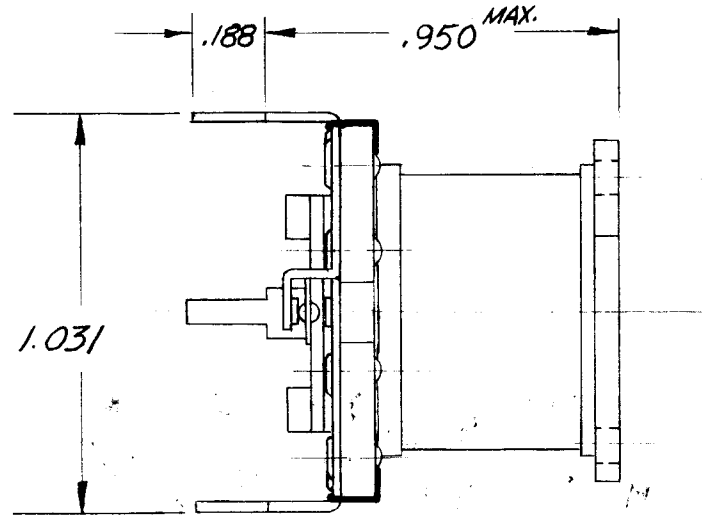
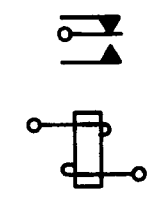


RL-142

RBM TYPE MS-40, SAMPLE NO. X9559ET  
 COIL RESISTANCE ~ 10,000  $\Omega$   $\pm 10\%$   
 MAX. COIL POWER ~ 1 WATT  
 MIN. COIL POWER ~ .040 WATTS  
 CONTACT RATING ~ 1 AMP. AT 28VDC OR 115VAC  
 NON INDUCTIVE.  
 COIL PICKUP ~ 2.5 MA. MAX.  
 SINGLE POLE DOUBLE THROW

CIRCUIT DIAGRAM



DIM. FOR REF. ONLY.

| SYM   | DESCRIPTION | DATE   | CH. NO. | DRAFTS | CHECKER | ENG. APP. |
|---|-------------|--|---------|--------|---------|-----------|
| UNLESS OTHERWISE SPECIFIED:   |             |  |         |        |         |           |
| DIMENSIONS ARE IN INCHES  |             | SCALE: 5401-141  |         |        |         |           |
| TOLERANCES ON FRACTIONS $\pm 1/64$ DECIMALS $\pm .005$ ANGLES $\pm 1/2^\circ$ |             | MAXIMUM ALLOWABLE TOLERANCES HAVE BEEN DETERMINED AND ANY DEVIATIONS WILL BE CAUSE FOR REJECTION. REMOVE ALL BURRS AND SHARP EDGES |         |        |         |           |

| REQ. PER UNIT | MODEL  | SECTION | ASS'Y. NO. | DATE   |
|---------------|--------|---------|------------|--------|
| 1             | GPR-92 | SQUELCH |            | 9-9-61 |
| USED ON       |        |         |            |        |

| REQ. ITEM          | PART NO. | GELLMAN  | DESCRIPTION     | SYMBOL         |
|--------------------|----------|--|-----------------|----------------|
|                    |          | THE TECHNICAL MATERIEL CORP.<br>MAMARONECK, NEW YORK |                 |                |
| STOCK SIZE         |          | RELAY, MINIATURE<br>(S.P./D.T.)                      |                 |                |
| MATERIAL           |          |  |                 |                |
| TYPE & TEMPER      |          | WJ   | MP              | JMA            |
| HEAT TREAT. SPEC.  |          | DRAWN  | CHECKER         | FINAL APPROVAL |
| FINISH & SPEC. NO. |          | RL-142   |                 |                |
|                    |          | ELEC. DES. APP.                                      | MECH. DES. APP. |                |