

RL-138 F

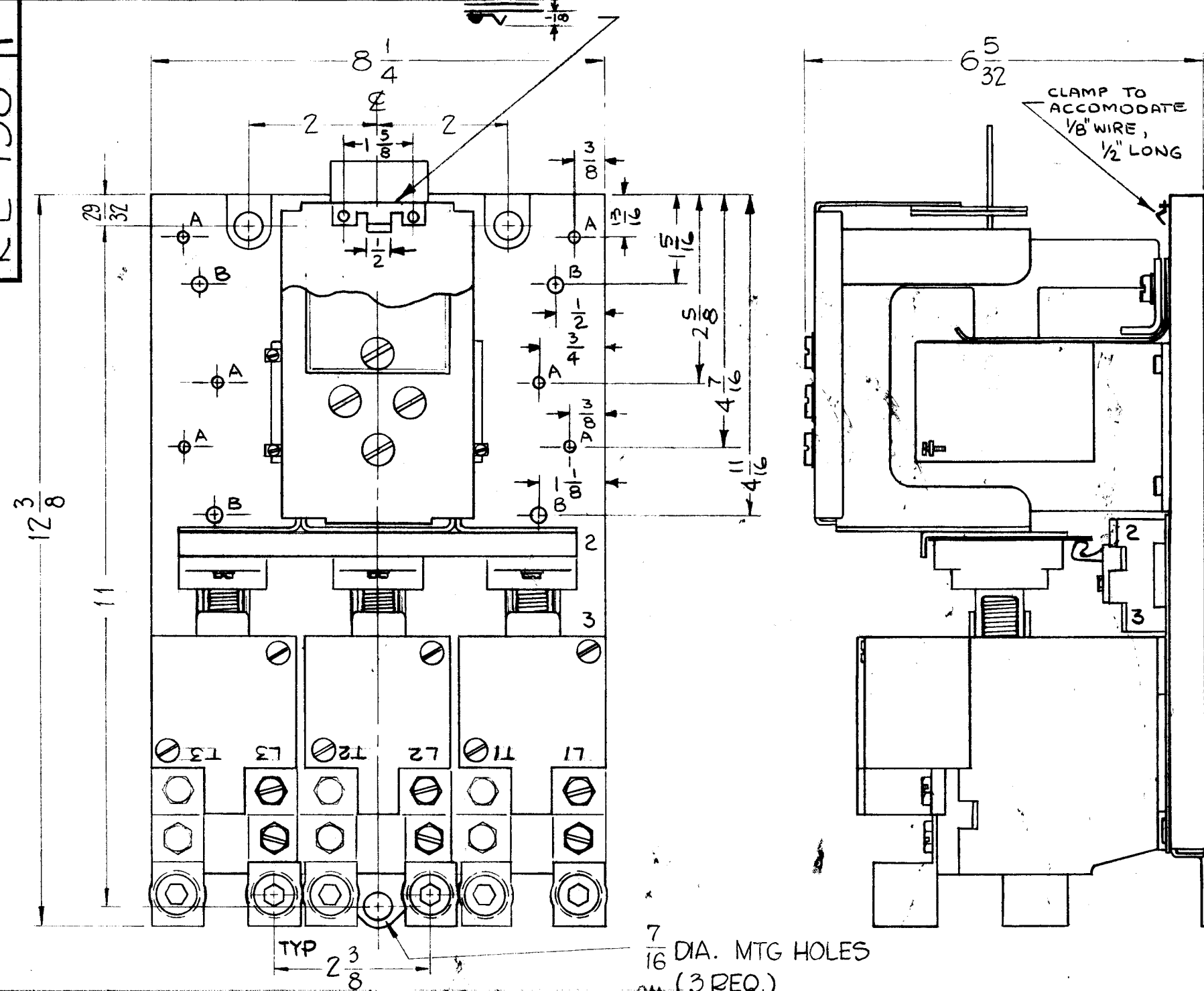


CHART				
TMC P/N	POLES	COIL VOLTAGE	FREQUENCY	APPROX WEIGHT
RL138	3	220	60 Hz	26 LBS.
RL138-2	3	208/220	50 Hz	26 LBS.
RL138-3	3	220	50/60Hz	21 LBS.

ELECTRICAL SPECIFICATIONS

MAX WIRE SIZE: 0000
 WEIGHT: 26 LBS. APPROX
 NEMA SIZE: 4
 MAX H.P.: 50
 POLES: SEE CHART
 CONTACT VOLTAGE: 600 V
 CONTACT MATERIAL: SILVER ALLOY
 8 HOUR RATING: 150 AMP FREE AIR
 135 AMP ENCLOSED

COIL VOLTAGE: SEE CHART
 FREQUENCY: SEE CHART

- NOTES:**
- ONE INTERLOCK SWITCH SPST MOUNTED ON LEFT SIDE.
 - NO THERMAL RELAYS REQUIRED.
 - FOR USE ON 30208V LINE OR 220V10 LINE FOR 10 LINE OMIT L3-T3 CONNECTION.

RL138-1, RL138-2 NO LONGER AVAILABLE REPLACED BY RL138-3 (SEE SHEET 2)

F	RL138-3 ADD. SHEET 2 ADD	12-4-61	21857	GDL			
E	REVISED ELECT SPECS REVERSED LETTERING L1, L2, L3, T1, T2, T3 ADDED IN CHART INCL RL 138-2	9-11-61	18496	EJ		FB	
D	DIMENSIONS CLARIFIED COIL VOLTAGE WAS 240V @ 60 CPS & 220V @ 50 CPS. MFG REFINISHED	11-30-61	17364	WUW			
C	PICT. UPDATED, TERM. MARKINGS ADDED "A" & "B" HOLES ADDED ELEC. SPECS REVISED NOTE 3 ADD.	8-10-61	12014	hob			
B	REVISION (RETORIAL ENLARGED)	5-2-61		J.C.B.			
SYM	DESCRIPTION	DATE	CH. NO.	DRAFTS	CHECKER	ENG. APP.	
UNLESS OTHERWISE SPECIFIED:		SCALE: DO NOT SCALE 5401-85 (8502 P02E)					
DIMENSIONS ARE IN INCHES TOLERANCES ON FRACTIONS ± 1/16 DECIMALS ± .005 ANGLES ± 1/2°		MAXIMUM ALLOWABLE TOLERANCES HAVE BEEN DETERMINED AND ANY DEVIATIONS WILL BE CAUSE FOR REJECTION. REMOVE ALL BURRS AND SHARP EDGES					

7 1/16 DIA. MTG HOLES (3 REQ.)

A-DR & TAP FOR 10-32 SCREW
 B-DR & TAP FOR 1/4-20 SCREW

2	GPT-40K	AP-103	5-2-61
REQ. PER UNIT	MODEL	SECTION	ASSY. NO. DATE
USED ON			

REQ.	ITEM	PART NO.	DESCRIPTION	SYMBOL
			THE TECHNICAL MATERIEL CORP., MAMARONECK, NEW YORK	
			RELAY, 3 POLE	
			MATERIAL	
			John C. Biele	
			DRAWN	CHECKER
			TYPE & TEMPER	HEAT TREAT. SPEC.
			FINISH & SPEC. NO.	ELEC. DES. APP. MECH. DES. APP.
			RL-138	F

