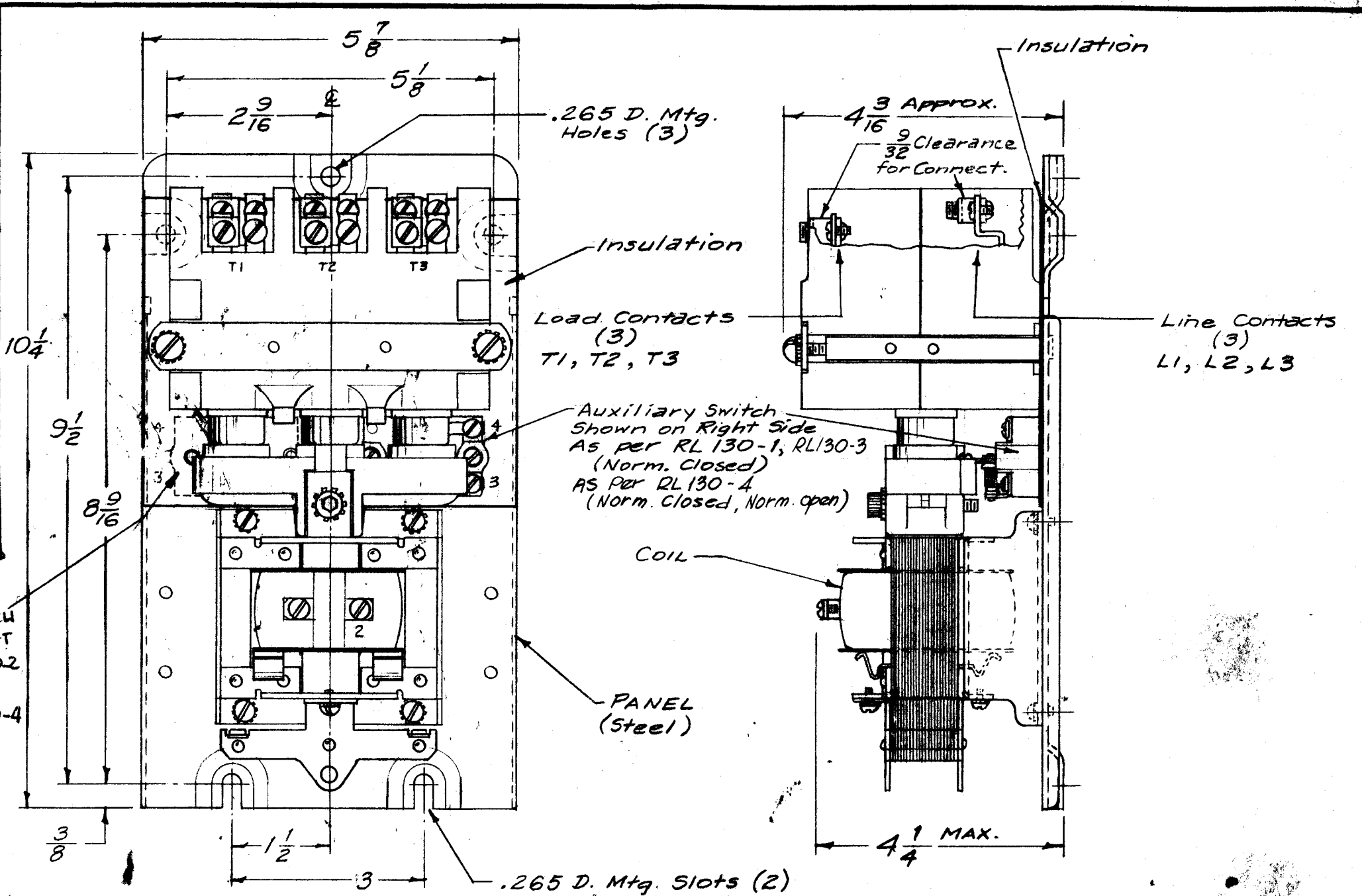


TMC PART NO.	MFG. PART NO.	DESCRIPTION
RL 130-1	4452 D30201 SIZE 2 WITH →	Auxiliary Switch Mounted on Right Side of Panel as shown in Pictorial, with Normally Closed Contacts.
RL 130-2	4452 D30201 SIZE 2 WITH →	Auxiliary Switch Mounted on Left Side of Panel as indicated in Dotted Lines, with Normally Open Contacts.
RL 130-3	4452 D30201 SIZE 2 WITH →	AUXILIARY SWITCH MOUNTED ON LEFT & RIGHT SIDE OF PANEL. LEFT SIDE TO BE NORMALLY OPEN CONTACTS & RIGHT SIDE TO BE NORMALLY CLOSED CONTACTS.
RL 130-4	4452 D30201 WITH →	AUXILIARY SWITCH MOUNTED ON RIGHT SIDE OF PANEL WITH NORMALLY CLOSED AND NORMALLY OPEN CONTACTS. AUXILIARY SWITCH MOUNTED ON LEFT SIDE OF PANEL WITH NORMALLY OPEN CONTACTS.
RL 130-5	4452 D30201	BASIC CONTACTOR WITH NO AUXILIARY CONTACTS.
RL 130-6	TMC PO 340 See Sheet ②	AUXILIARY SWITCH MOUNTED ON LEFT & RIGHT SIDE OF PANEL LEFT SIDE TO BE N.O. - RIGHT SIDE TO BE N.C. CONTACTS



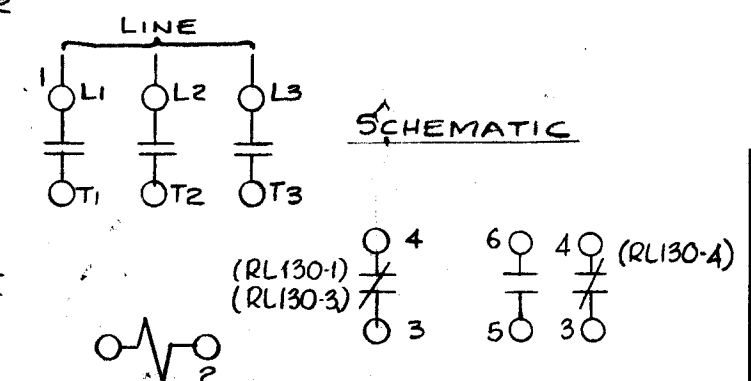
AUXILIARY SWITCH WILL BE ON LEFT SIDE FOR RL130-2, RL130-3, (NORM. OPEN) RL130-4

MAXIMUM RATING			
SINGLE PHASE		THREE PHASE	
VOLTS	STARTING H.P.	VOLTS	STARTING H.P.
110	3	110	7 1/2
220	7 1/2	220	15

AUXILIARY SWITCH RATINGS (CONTACTS)  
 1.5 AMP @ 220VAC / 15AMP INRUSH  
 3AMP @ 110VAC / 30AMP INRUSH

Purch. Note - Use TMC Dwg. No. PO-183 for Contact Kit (Single)  
 Use TMC Dwg. No. PO-194 for Coil Kit

SPECIFICATIONS:  
 COIL - Type 200L-2; 110 V/25cps; 208-220V/60 cps.  
 CONTACTS - SILVER



RL 130-1, THRU RL 130-5  
 NO LONGER AVAILABLE  
 REPLACED BY RL 130-6  
 (SEE SHEET 2)

ISSUE	ITEM	CHANGED FROM	DATE	CH. NO.	DRAFTS	CHECKER	ENG. APP.
E		ON RL130-6 MFG PIN MODIFIED	10-3-54	22076	GDL		
D		RL130-6 & SHEET 2 ADD	10-1-51	21948	GDL		
C	1	RL130-5 ADDED TO CHART	11-30-55	15266	J.V.		
B		RL130-3, 4, ADD TO CHART; OPTIOKLE ADD TO MOD; 3 ADD TO WIRE CALLOUTS	3-5-65	13652	J.P.		
A	1	AUX. SWITCH RATINGS ADDED	13-12-60	3710	M.H.F.		

TOLERANCES: DEC. DIM. ±, FRAC. DIM. ±, ANGULAR DIM. ±  
 SCALE: S-401-32  
 MAXIMUM ALLOWABLE TOLERANCES HAVE BEEN DETERMINED AND ANY DEVIATIONS WILL BE CAUSE FOR REJECTION. REMOVE ALL BURRS AND SHARP EDGES

REQ. PER UNIT	MODEL	PROJECT NO.	ASSY. NO.	DATE
2	GPT10KLF	AUX. FRAME	AX530	1-6-65
1 ea.	GPT-10K	Aux. Frame		4-17-59

USED ON

REQ. ITEM	PART NO.	DESCRIPTION	SYMBOL
THE TECHNICAL MATERIEL CORP. MAMARONECK, NEW YORK			
RELAY CONTACTOR, MAGNETIC			
MATERIAL			
TYPE & TEMPER HEAT TREAT. SPEC.			
DRAWN CHECKED FINAL APPROVAL			
FINISH & SPEC. NO. ELEC. DES. APP. MECH. DES. APP.			

16 11/59  
 G.G.  
 RL-130 E

5

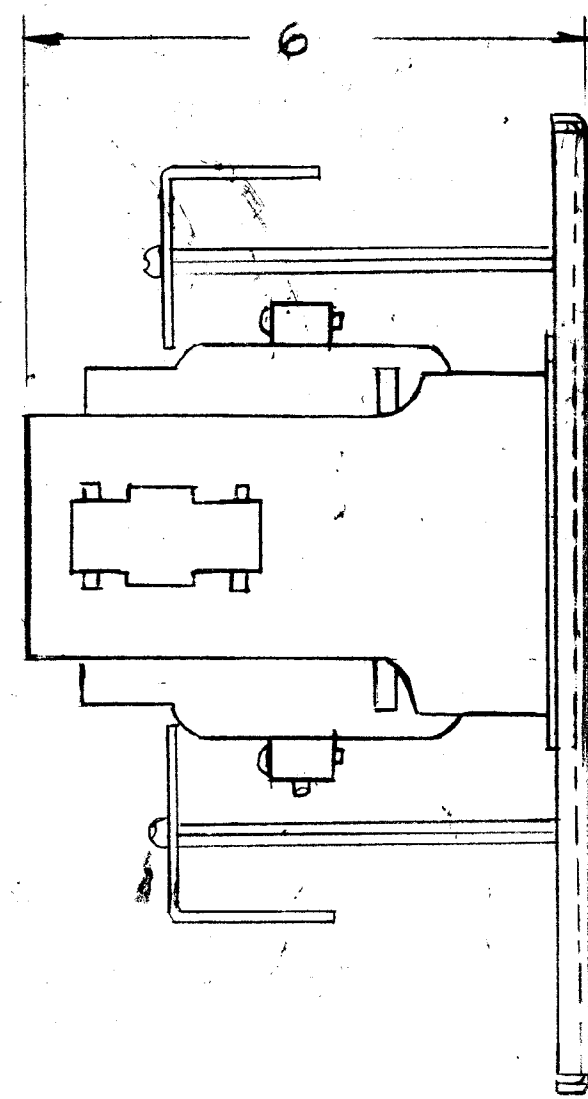
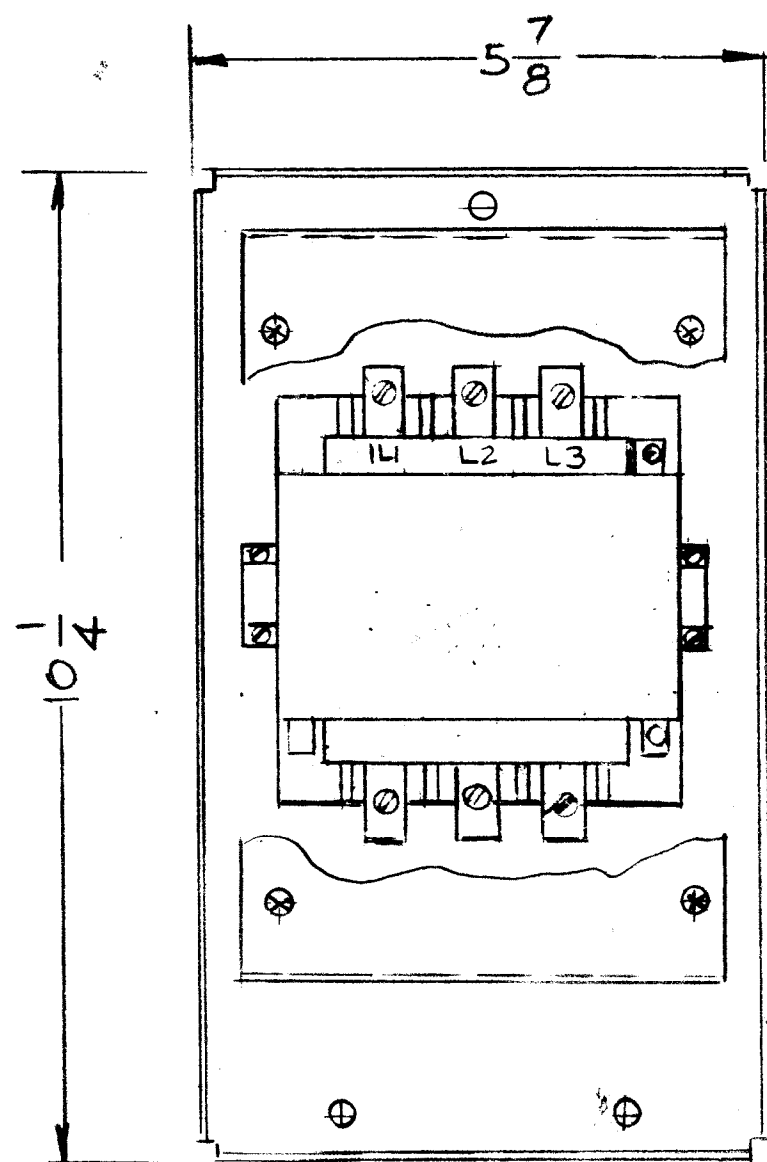
4

3

2

1

REVISIONS							
EMN. NO	DRAFT	CHKD	ZONE	LTR	DESCRIPTION	DATE	APPROVED
21948	GDL			D	RL130-6 SHEET 2 ADDED	10-1-91	
22076	GDL			E	ELECT. SPEC. CLARIFIED	10-2-84	<i>QRB</i>
				F	REPLACEMENT NOTE ADD	3-1-80	G.D.L.
	GDL			G	PICTORIAL UPDATED	10-18-89	



NOTE: SHIP ID 451 WITH EACH RL130-6 ASSY

ELECTRICAL SPECIFICATIONS

NEMA SIZE - 3  
 MAX H.P. - 50  
 3 PHASE RATING 230 VAC  
 SUPPLIED WITH N.O. & N.C. AUXILIARY SWITCHES  
 REPLACEMENT CONTACT KIT PO 354

SEE PO 340 FOR ORDERING  
 SEE A 5792 TO ASSEMBLE

RL 130-6 AS SHOWN

1	GPT-10K	A 5792
QTY / UNIT	MODEL USED ON	ASS'Y NO.
APPLICATION		
	CODE	S401-
<small>NOTICE TO PERSONS RECEIVING THIS DRAWING</small> <small>THE TECHNICAL MATERIEL CORPORATION claims proprietary right in the material disclosed hereon. This drawing is issued in confidence for engineering information only and may not be reproduced or used to manufacture anything shown hereon without permission from THE TECHNICAL MATERIEL CORPORATION to the user. This drawing is loaned for mutual assistance and is subject to recall at any time.</small>		

UNLESS OTHERWISE SPECIFIED DIMENSIONS ARE IN INCHES AND INCLUDE CHEMICALLY APPLIED OR PLATED FINISHES

DECIMALS	FRACTIONS
.X ± .05	1/64
.XX ± .01	TOLS. ANGLES
.XXX ± .005	0°-30'

MATERIAL

FINISH

REQ'D	ITEM	PART NUMBER	DESCRIPTION	SYM.
LIST OF MATERIAL				
THE TECHNICAL MATERIEL CORP. MAMARONECK, NEW YORK				
RELAY, 3 POLE				
FINAL APPROVAL <i>QRB</i>		DATE 10/1/81	DATE	
MECH. DES.		DATE	DATE	
ELECT. DES.		DATE	DATE	
CHECKED		DATE	DATE	
DRAWN G.D.L.		DATE 10-1-81	DATE	
SIZE	CODE IDENT. NO.	DWG NO.	ISSUE	
B	82679	RL130-G	G	
SCALE	1/2	SHEET 2 OF 2		