

CONTACT ARRANGEMENT					
CODE	CONTACTS	CODE	CONTACTS	CODE	CONTACTS
1	SPSTNO	7	DPSTNO	13	3PSTNC
2	SPSTNC	8	DPSTNC	14	3PDT
3	SPSTNODB	9	DPSTNODB	15	4PSTNO
4	SPSTNCDB	10	DPSTNCDB	16	4PSTNC
5	SPDT	11	DPDT	17	4PDT
6	SPDTCDB	12	3PSTNO		

CHART 1

"D" - DC COILS				
VOLTS	TURNS	WIRE SIZE	RES.	AV. DC CURRENT-MA
6	520	26 P.E.	4	1500
12	1040	29 P.E.	15.5	770
24	1880	33 P.E.	65	370
48	3780	35 P.E.	235	200
110	9340	39 P.E.	1350	80
220	USE 110 V. RELAY WITH 10,000 OHM, 5W WIRE WOUND RESISTOR IN SERIES			

CHART 2

"A" - AC COILS					
VOLTS	FREQ. CPS	TURNS	WIRE SIZE	RES.	AV. AC CURRENT
6	60	200	22 P.E.	.6	2980
12	60	400	25 P.E.	2.28	1500
24	60	750	28 P.E.	8.8	800
115	60	3780	35 P.E.	235	160
230	60	7700	38 P.E.	900	80

CHART 3

CAM ARRANGEMENT	
CODE	DESCRIPTION
A	CAMS AND CONTACTS OPERATE ALTERNATELY
C	CAMS AND CONTACTS OPERATE CONSECUTIVELY.

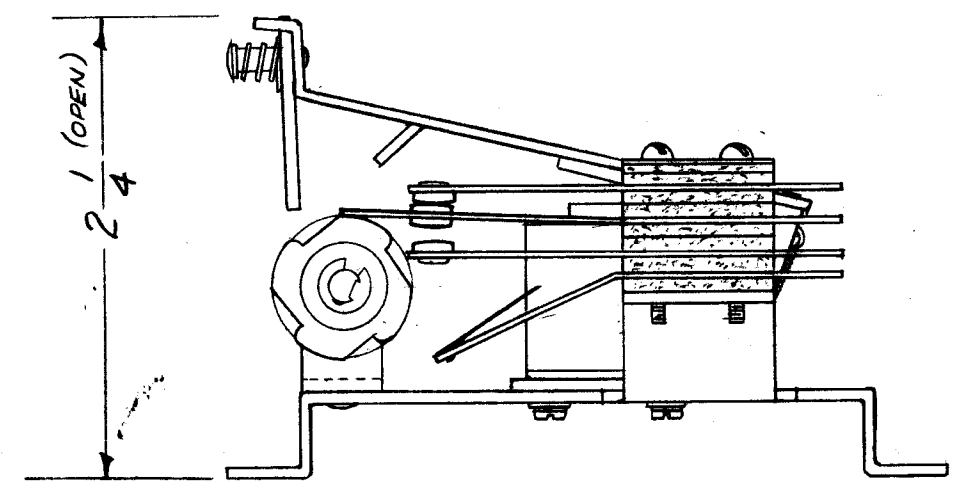
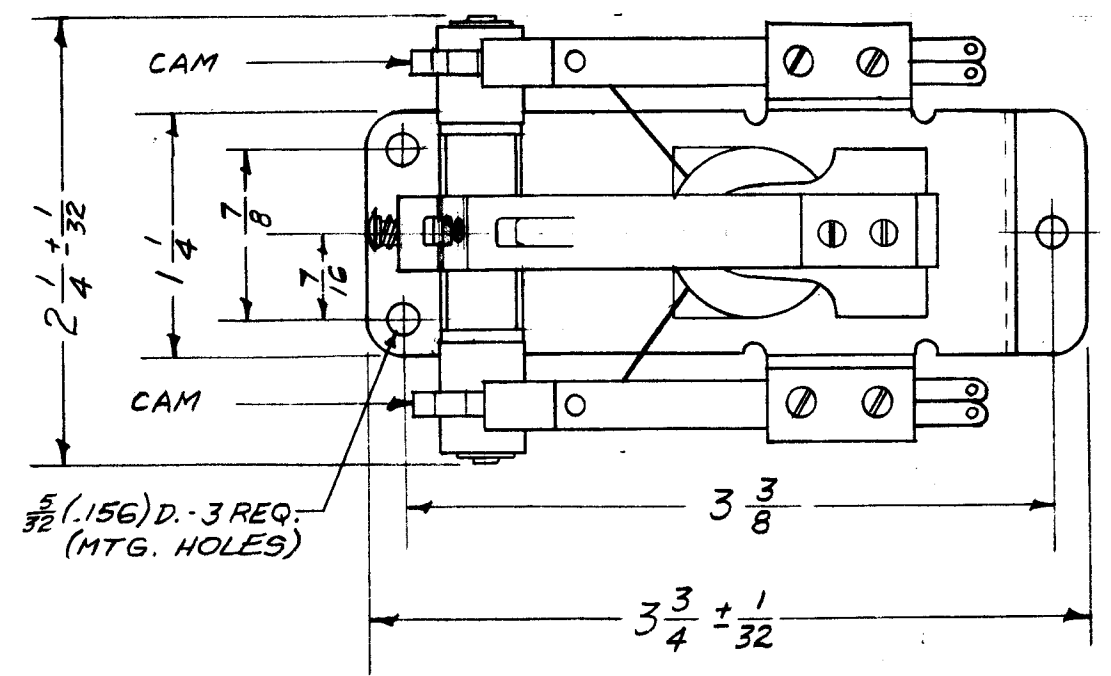
CHART 4

**NOTES.**

1. COILS - AVAILABLE FOR EITHER VOLTAGE OR CURRENT OPERATION. RANDOM WOUND ON HIGH DIELECTRIC MOLDED BAKELITE BOBBINS.  
BREAKDOWN VOLTAGE - 500 V. RMS,  
MINIMUM TO CORE & FRAME.  
COATING - HEAVY BAKED VARNISH.

2. CONTACTS - 4PDT MAX.  
SIZE - 3/16 DIA.  
MATERIAL - SILVER  
RATED AT 5 AMPS AT 115 VAC, 60 CPS. NON-INDUCTIVE LOAD.

3. TERMINALS - TIN-DIPPED SOLDER TYPE. ALL TERMINALS PROJECT FROM REAR OF SPRING STACK. (TOP MOUNTED BAKELITE PANEL WITH SCREW TERMINALS MAY BE REQUESTED)



IF COIL IS AC, FREQ. WILL APPEAR HERE.  
 IF COIL IS DC, RES. WILL APPEAR HERE.

RL-118-17 A 115-60-A

TMC NO. CONTACT ARRANGEMENT (See Chart 1) TYPE of COIL VOLTAGE FREQ. or RES.

See Charts 2 & 3

CAM ARRANGEMENT (See Chart 4)

REF: POTTER & BRUMFIELD - "AP" SERIES

**STANDARD DRAWING**

ISSUE	ITEM	CHANGED FROM	DATE	CH. NO.	DRAFTS	CHECKER	ENG. APP.
TOLERANCES							
SCALE:							
MAXIMUM ALLOWABLE TOLERANCES HAVE BEEN DETERMINED AND ANY DEVIATIONS WILL BE CAUSE FOR REJECTION. REMOVE ALL BURRS AND SHARP EDGES							

REQ. ITEM	PART NO.	DESCRIPTION	SYMBOL
THE TECHNICAL MATERIEL CORP. MAMARONECK. NEW YORK			
STOCK SIZE			
RELAY, ARMATURE, IMPULSE TYPE			
MATERIAL			
TYPE & TEMPER		HEAT TREAT. SPEC.	FINISH & SPEC. NO.
DRAWN		CHECKED	FINAL APPROVAL
ELEC. DES. APP.		MECH. DES. APP.	

REQ. PER UNIT	MODEL	PROJECT NO.	ASS'Y. NO.	DATE
USED ON				

DEC. DIM. ±  
 FRAC. DIM. ±  
 ANG. DIM. ±

461-7-57  
 JND  
 A. J. J.  
 RL-118