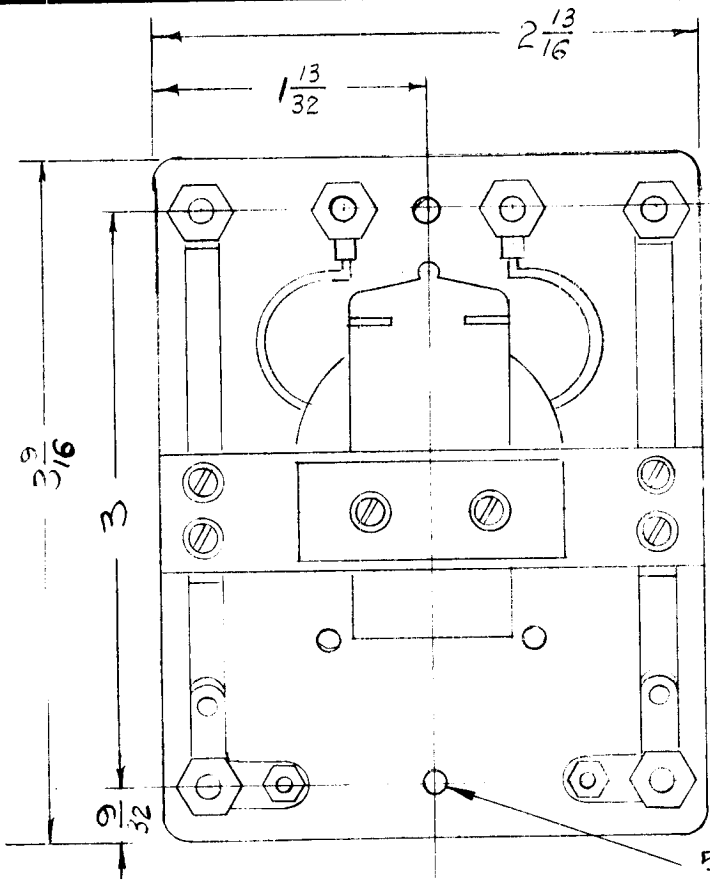


| REQ. PER UNIT | USED ON | | |
|---------------|---------|-----------|----------|
| | MODEL | ASSY. NO. | DATE |
| 1 | GPT-750 | | |
| 1 | RTM | | 5-23-58 |
| 1 | RTM-2 | | 10-16-58 |

RL-115 C



5/32 DIA. - 2 HOLES

OVERALL HEIGHT 1 15/16

ELECTRICAL SPECIFICATION -

DOUBLE POLE - DOUBLE THROW
 CONTACT RATING - 10A NON INDUCTIVE
 COIL - 150 VDC
 COIL RES. - APPROX. 6,300 Ω

REF: ADVANCE ELECTRICAL CO. # AT/2C/150 VD

| ISSUE | ITEM | CHANGED FROM | DATE | CH. NO. | DRAFTS | CHECKER | ENG. APP. | REQ. ITEM | PART NO. | DESCRIPTION | SYMBOL | | | | |
|----------------|------|---|--|---------|--------|---------|-----------|--------------------|--------------------|--|---------|----------------|--|--|--|
| C | 2 | DIMS 9/32 WERE 1/32, DIM 3 ADDED | 7-12-63 | 9543 | | | | | | THE TECHNICAL MATERIEL CORP. MAMARONECK, NEW YORK | RELAY | | | | |
| | 1 | ADDED 5/32 DIA TO MTG HOLES | | | | | | | | | | | | | |
| B | 1 | COIL RES. WAS 7500 Ω | 5-22-61 | 4930 | W.A.F. | J.C.S. | | | STEATITE INSULATED | | | | | | |
| A | 1 | UNDER ELEC. SPEC. COIL RES. WAS APPROX 10,000 Ω | 2-15-61 | 4187 | W.A.F. | J.C.S. | | | | | | | | | |
| TOLERANCES | | | SCALE: | | | | | | | | | | | | |
| DEC. DIM. ± | | | MAXIMUM ALLOWABLE TOLERANCES HAVE BEEN DETERMINED AND ANY DEVIATIONS WILL BE CAUSE FOR REJECTION. REMOVE ALL BURRS AND SHARP EDGES | | | | | TYPE & TEMPER | HEAT TREAT. SPEC. | DRAWN | CHECKED | FINAL APPROVAL | | | |
| FRAC. DIM. ± | | | | | | | | | | | | | | | |
| ANGULAR DIM. ± | | | | | | | | | | | | | | | |
| | | | | | | | | FINISH & SPEC. NO. | ELEC. DES. APP. | MECH. DES. APP. | RL-115 | C | | | |