

IF IT IS FOUND DESIRABLE TO CHANGE ANY TOLERANCE OR OTHER DETAIL SPECIFIED ON THIS DRAWING NOTIFY THE PURCHASER PROMPTLY.

MAXIMUM ALLOWABLE TOLERANCES HAVE BEEN DETERMINED AND DEVIATIONS WILL BE CAUSE FOR REJECTION. REMOVE ALL BURRS AND SHARP EDGES

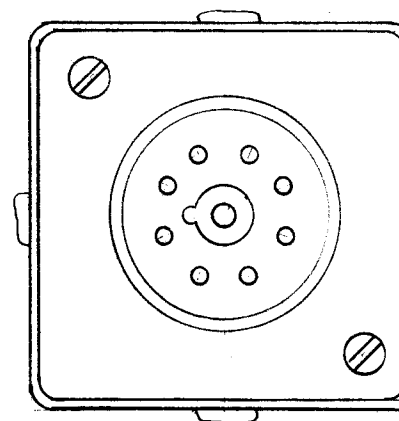
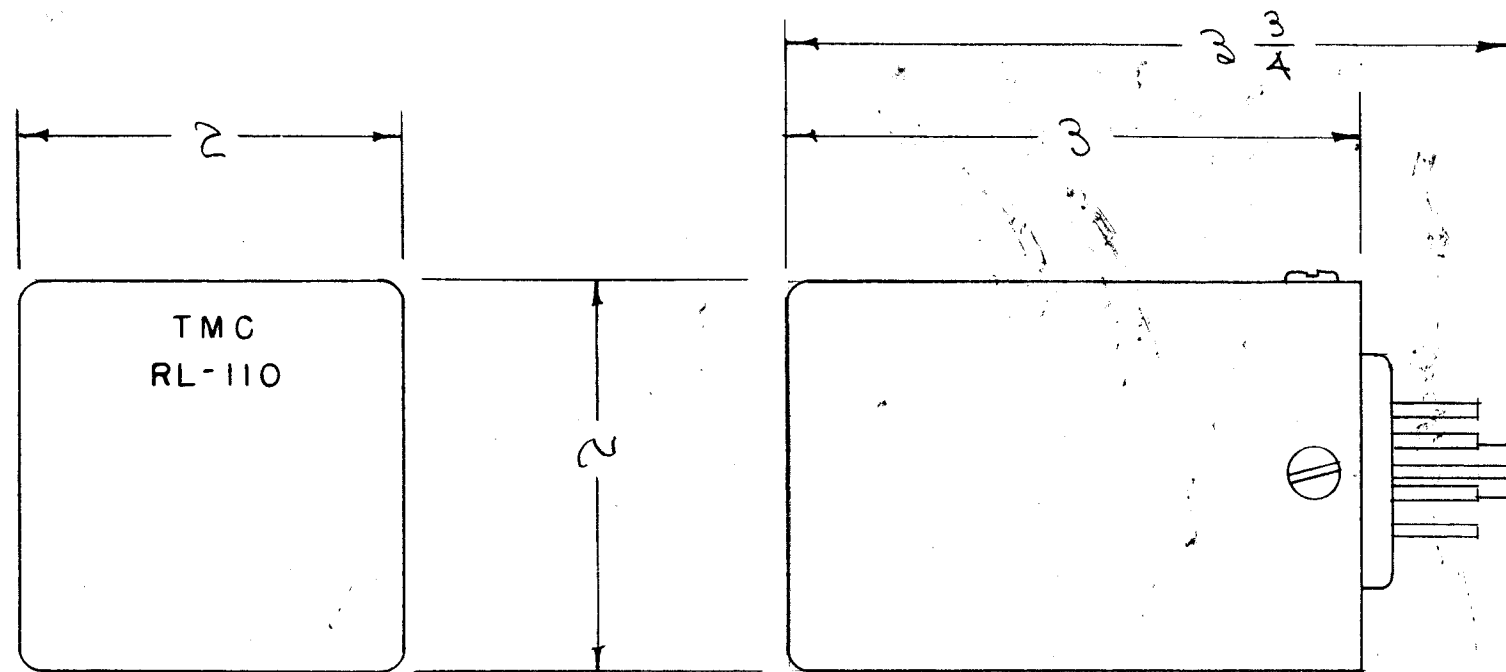
RL-110 A

CONTACT DATA:

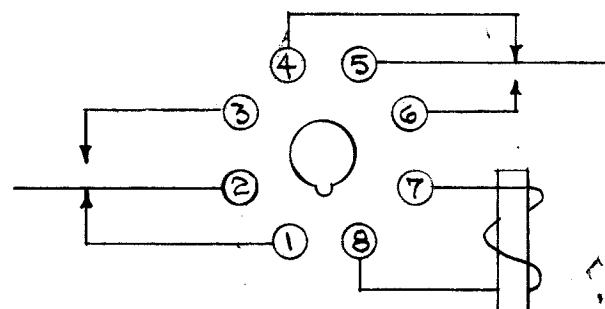
220 V. DC
 0.5 A (Resistive)
 3.0 A Max. Resistive
 At Max. Rated Current The Voltage Rating is 35 V. DC
 At Max. Rated Current The Dissipation Rating is 110 W.

COIL DATA:

Resistance 20K ohms
 Operating Voltage 80 Volts DC
 Operating Current 4 MA



DIMENSIONS FOR REFERENCE ONLY.



SCHEMATIC DIAGRAM

REQ. ITEM	PART NO.	DESCRIPTION	SYMBOL
		THE TECHNICAL MATERIEL CORP. MAMARONECK, NEW YORK	
STOCK SIZE		RELAY	
MATERIAL		RL-110	
WEIGHT PER PC.			
TYPE & TEMPER		CDD	A.J.J. WDC
DRAWN		A.J.J.	WDC
HEAT TREAT. SPEC.		FINAL APPROVAL	
CHECKED			
4A-543		RL-110 A	
FINISH & SPEC. NO.			

A	1	ELEC. SPECIFICATION ADDED	9-26-53	1	MB	JAG	AJJ
ISSUE	ITEM	CHANGED FROM	DATE	CN. NO.	DRAFTS	CHECKER	ENG. APP.

TOLERANCES		SCALE:	
DEC. DIM. ±		DRILL, PUNCH, COMMERCIAL STOCK	
F RAC. DIM. ±		SIZES AND MANUFACTURERS	
ANGULAR DIM. ±		TOLERANCES ARE NOT INCLUDED.	
REQ. PER UNIT	MODEL	PROJECT NO.	ASS'Y. NO.
	USED ON		