

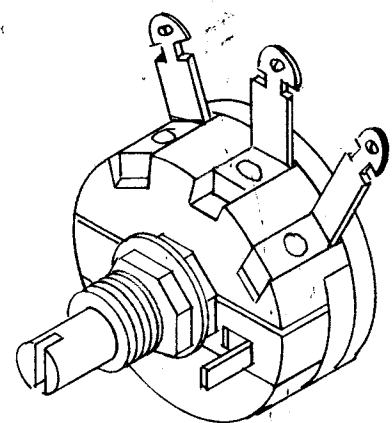
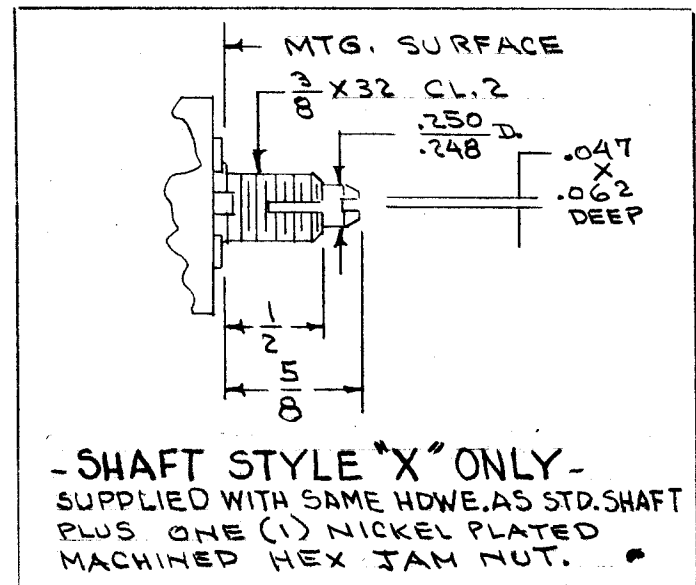
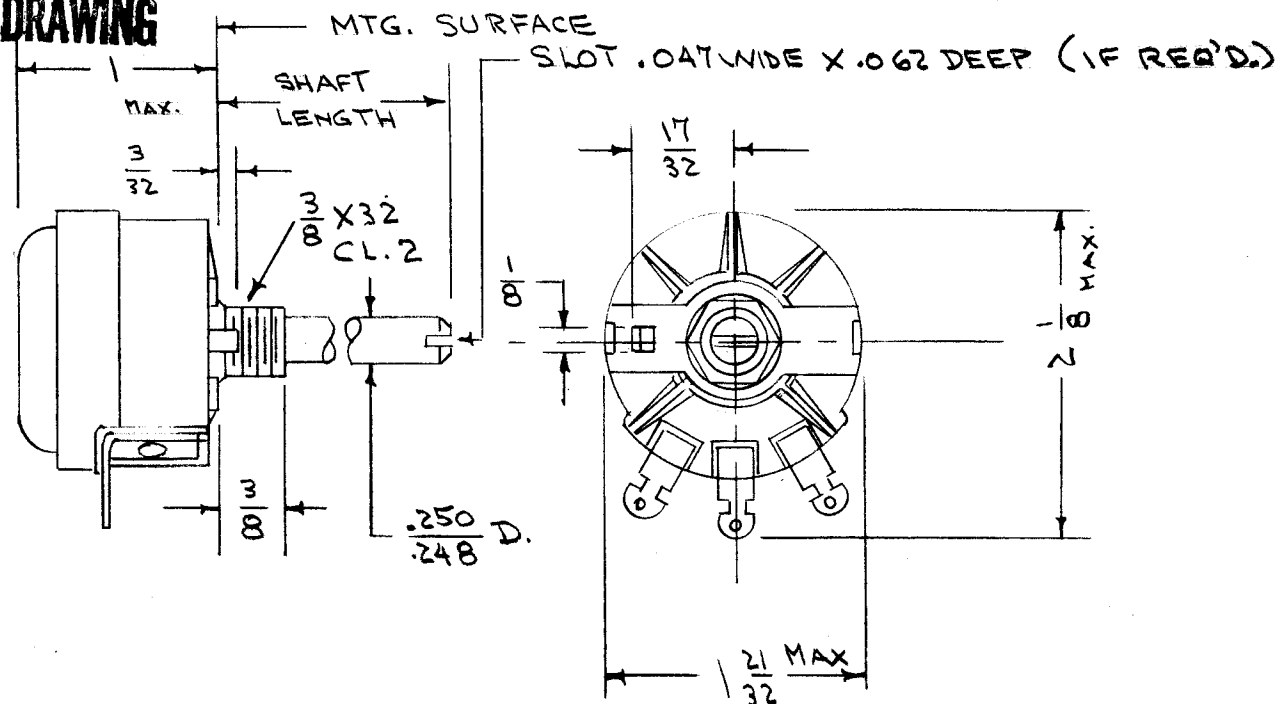
IF IT IS FOUND DESIRABLE TO CHANGE ANY TOLERANCE OR OTHER DETAIL SPECIFIED ON THIS DRAWING NOTIFY THE PURCHASER PROMPTLY.

MAXIMUM ALLOWABLE TOLERANCES HAVE BEEN DETERMINED AND DEVIATIONS WILL BE CAUSE FOR REJECTION. REMOVE ALL BURRS AND SHARP EDGES

TOLERANCE $\pm 10\%$ } ONLY AVAILABLE
TAPER - LINEAR "A"

STANDARD DRAWING

RA-106



RESISTANCE VALUES AVAILABLE AS STANDARD	
1	1500
2	2000
4	2500
6	3000
10	5000
15	7500
20	10K
25	15K
30	20K
40	25K
50	30K
60	40K
75	50K
100	75K
200	100K
300	
400	
500	
750	
1000	

SHAFT LENGTH			
LETTER DES.	ROUND OR FLATTED	SLOTTED	LENGTH OF FLAT
A	—	5/8	—
C	—	3/4	—
D	7/8	7/8	.375 \pm .010
E	1	1	.500 "
G	1/4	1/4	.625 "
H	1/2	1/2	.625 "
J	2	2	.625 "
K	2 1/2	2 1/2	2.125 "

SWITCH	
A	NO SWITCH
B	SPST SW.
C	DPST SW.

SHAFT STYLE	
F	FLATTED
R	ROUND
S	SLOTTED
X	LOCKING (SLOTTED) SEE DETAIL

TEMP. COEF.		
S	STANDARD	160 PP/M
Q	SPECIAL	20 PPM

TYPE DESIGNATION TO BE IN FOLLOWING FORM

RA-106 A S F D 103 A

COMPONENT SWITCH TEMP. COEF. SHAFT STYLE LENGTH SHAFT TAPER RES. TOL. & TAPER

ADDITIONAL CHARACTERISTICS - VOLTAGE BREAKDOWN - 1000 V. AC BETWEEN METAL MTG. SURFACE AND ELEMENT OR TERMINAL. DUAL OR TRIPLE UNITS ALSO AVAILABLE

REF: CLAROSTAT MFG. CO. SERIES 10

NOTE
STANDARD SHAFT UNITS ARE SUPPLIED WITH ONE (1) NICKEL PLATED MACHINE HEX MTG. NUT AND ONE (1) INTERNAL TOOTH LOCKWASHER.

REQ.	ITEM	PART NO.	DESCRIPTION	SYMBOL
			THE TECHNICAL MATERIEL CORP.	
			MAMARONECK. NEW YORK	
STOCK SIZE			RESISTOR, ADJUSTABLE	
MATERIAL		WEIGHT PER PC.	W.W. 4 WATT	
TYPE & TEMPER			COND. 10/2/54	K2
HEAT TREAT. SPEC.			DRAWN	ELEC. DES. APP. MECH. DES. APP.
			JAD	A. J. J.
			CHECKED	FINAL APPROVAL
FINISH & SPEC. NO.			RA-106	

ISSUE	ITEM	CHANGED FROM	DATE	CN. NO.	DRAFTS	CHECKER	ENG. APP.
TOLERANCES							
ALL OTHERS		DEC. DIM. \pm FRAC. DIM. \pm ANGULAR DIM. \pm	SCALE:				
		DRILL, PUNCH, COMMERCIAL STOCK SIZES AND MANUFACTURERS TOLERANCES ARE NOT INCLUDED.					
MODEL		PROJECT NO.		ASS'Y. NO.		DATE	
USED ON							

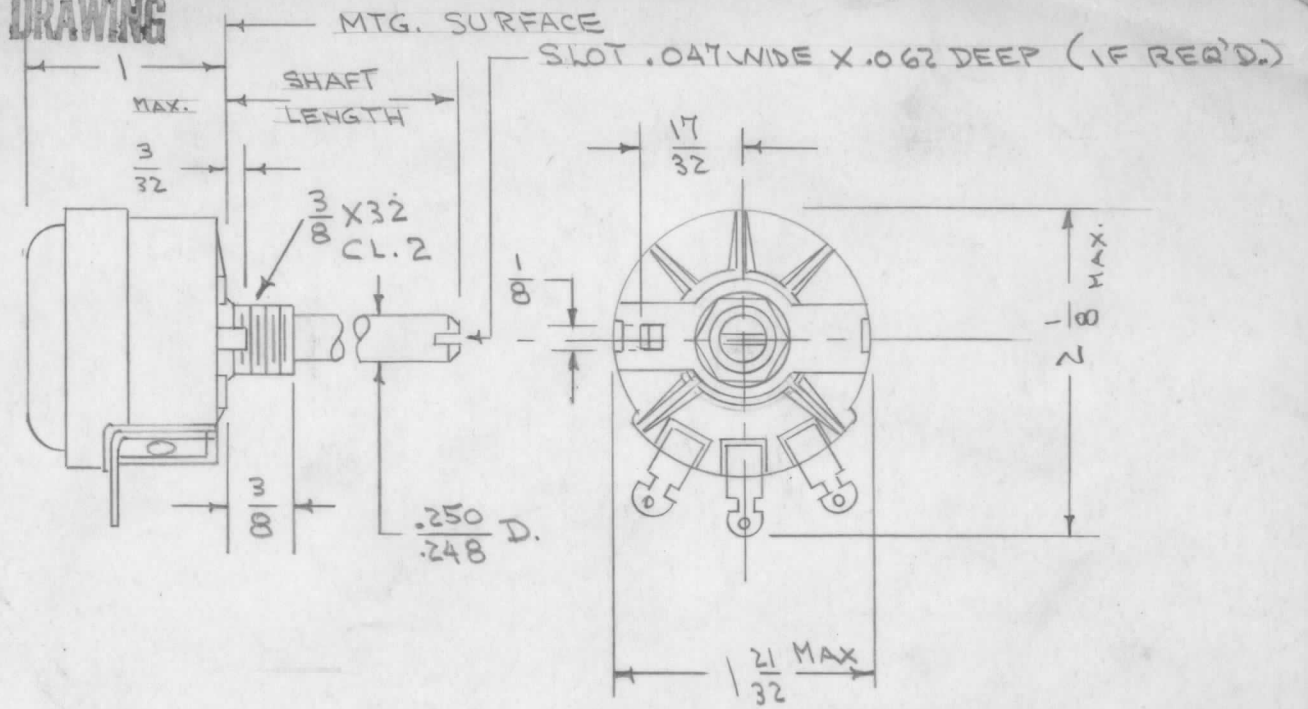
IF IT IS FOUND DESIRABLE TO CHANGE ANY TOLERANCE OR OTHER DETAIL SPECIFIED ON THIS DRAWING NOTIFY THE PURCHASER PROMPTLY.

MAXIMUM ALLOWABLE TOLERANCES HAVE BEEN DETERMINED AND DEVIATIONS WILL BE CAUSE FOR REJECTION. REMOVE ALL BURRS AND SHARP EDGES

TOLERANCE $\pm 10\%$
TAPER - LINEAR } ONLY AVAILABLE "A"

RA-106

STANDARD DRAWING



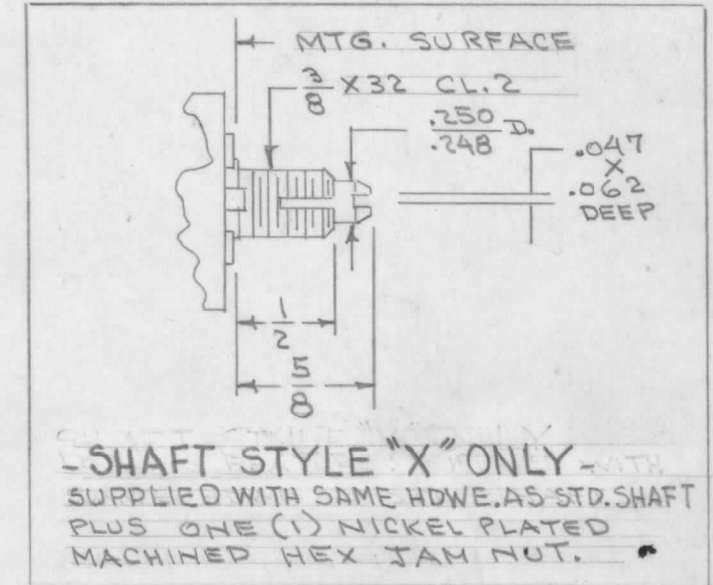
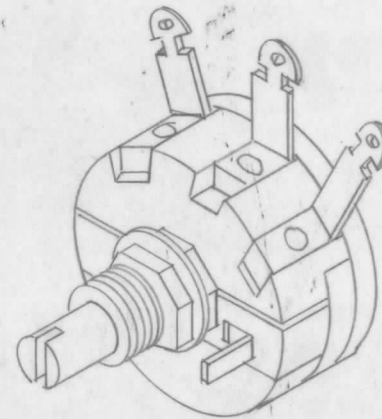
RESISTANCE VALUES AVAILABLE AS STANDARD	
1	1500
2	2000
4	2500
6	3000
10	5000
15	7500
20	10K
25	15K
30	20K
40	25K
50	30K
60	40K
75	50K
100	75K
200	100K
300	
400	
500	
750	
1000	

SHAFT LENGTH			
LETTER DES.	ROUND OR FLATTED	SLOTTED	LENGTH OF FLAT
A	—	5/8	—
C	—	3/4	—
D	7/8	7/8	.375 $\pm .010$
E	1	1	.500 "
G	1/4	1/4	.625 "
H	1/2	1/2	.625 "
J	2	2	.625 "
K	2 1/2	2 1/2	2.125 "

SWITCH	
A	NO SWITCH
B	SPST SW.
C	DPST SW.

SHAFT STYLE		
F	FLATTED	
R	ROUND	
S	SLOTTED	
X	LOCKING (SLOTTED)	SEE DETAIL

TEMP. COEF.		
S	STANDARD	160 PP/M
Q	SPECIAL	20 PPM



TYPE DESIGNATION TO BE IN FOLLOWING FORM

RA-106 A S F D 103 A

COMPONENT SWITCH TEMP. SHAFT SHAFT RES. TOL. & COEF. STYLE LENGTH TAPER

ADDITIONAL CHARACTERISTICS -
VOLTAGE BREAKDOWN - 1000 V. AC BETWEEN METAL MTG. SURFACE AND ELEMENT OR TERMINAL.
DUAL OR TRIPLE UNITS ALSO AVAILABLE

REF: CLAROSTAT MFG. CO. SERIES 10

NOTE
STANDARD SHAFT UNITS ARE SUPPLIED WITH ONE (1) NICKEL PLATED MACHINE HEX MTG. NUT AND ONE (1) INTERNAL TOOTH LOCKWASHER.

REQ.	ITEM	PART NO.	DESCRIPTION	SYMBOL
			THE TECHNICAL MATERIEL CORP. MAMARONECK. NEW YORK	
STOCK SIZE			RESISTOR, ADJUSTABLE	
MATERIAL		WEIGHT PER PC.	W.W. 4 WATT	
TYPE & TEMPER		CD. 10/13/54	K2	102
HEAT TREAT. SPEC.		JAG	A. J. J.	
FINISH & SPEC. NO.		CHECKED	FINAL APPROVAL	
			RA-106	

ISSUE	ITEM	CHANGED FROM	DATE	CN. NO.	DRAFTS	CHECKER	ENG. APP.
TOLERANCES							
ALL OTHERS			DEC. DIM. \pm FRAC. DIM. \pm ANGULAR DIM. \pm		SCALE:		
				DRILL, PUNCH, COMMERCIAL STOCK SIZES AND MANUFACTURERS TOLERANCES ARE NOT INCLUDED.			

MODEL	PROJECT NO.	ASS'Y. NO.	DATE
USED ON			