

IF IT IS FOUND DESIRABLE TO CHANGE ANY TOLERANCE OR OTHER DETAIL SPECIFIED ON THIS DRAWING NOTIFY THE PURCHASER PROMPTLY.

MAXIMUM ALLOWABLE TOLERANCES HAVE BEEN DETERMINED AND DEVIATIONS WILL BE CAUSE FOR REJECTION. REMOVE ALL BURRS AND SHARP EDGES

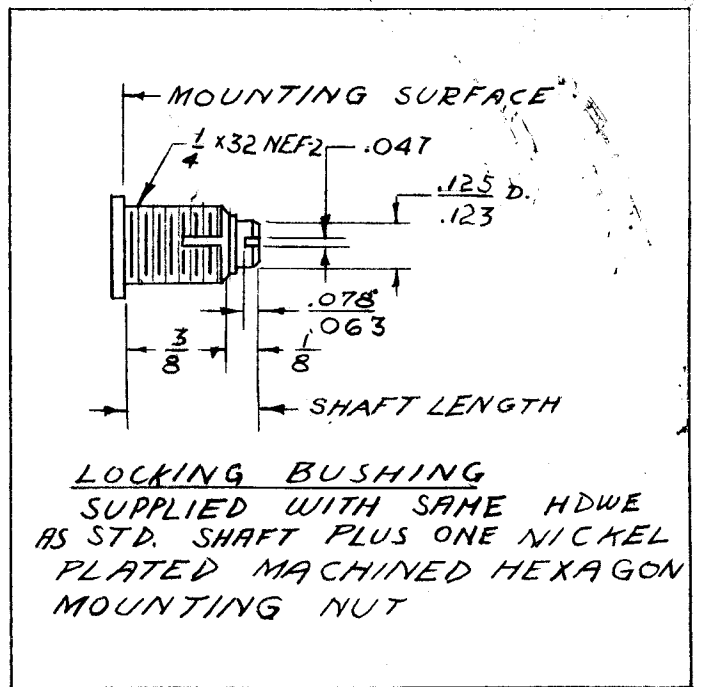
SWITCH		STYLE OF SHAFT	
A	NO SWITCH	F	FLATTED
B	SPST SW	R	ROUND
C	DPST SW	S	SLOTTED
		X	LOCK, SLOTTED

TEMPERATURE COEFFICIENT		
S	STANDARD	270 10K, 160ppm 10K&UP 20ppm
Q	SPECIAL	20 ppm

TOLERANCE & TAPER	
A	ONLY AVAILABLE LINEAR ± 10%

SHAFT LENGTH			
LETTER DESIGNAT.	ROUND OR FLATTED	SLOTTED	LENGTH OF FLAT
A	--	5/8	--
C	--	3/4	--
D	7/8	7/8	.375
E	1	--	.500
G	1 1/4	1 1/4	.625 ±.010
H	1 1/2	1 1/2	.625
J	2	2	.625
K	2 1/2	2 1/2	2.125
M	---	7/16	---

A	1	LETTER 'M' ADDED	10/15/57	1	AB	J. J. J.	
ISSUE	ITEM	CHANGED FROM	DATE	CN. NO.	DRAFTS	CHECKER	ENG. APP.
TOLERANCES		SCALE:					
ALL OTHERS	DEC. DIM. ± FRAC. DIM. ± ANGULAR DIM. ±	DRILL, PUNCH, COMMERCIAL STOCK SIZES AND MANUFACTURERS TOLERANCES ARE NOT INCLUDED.					

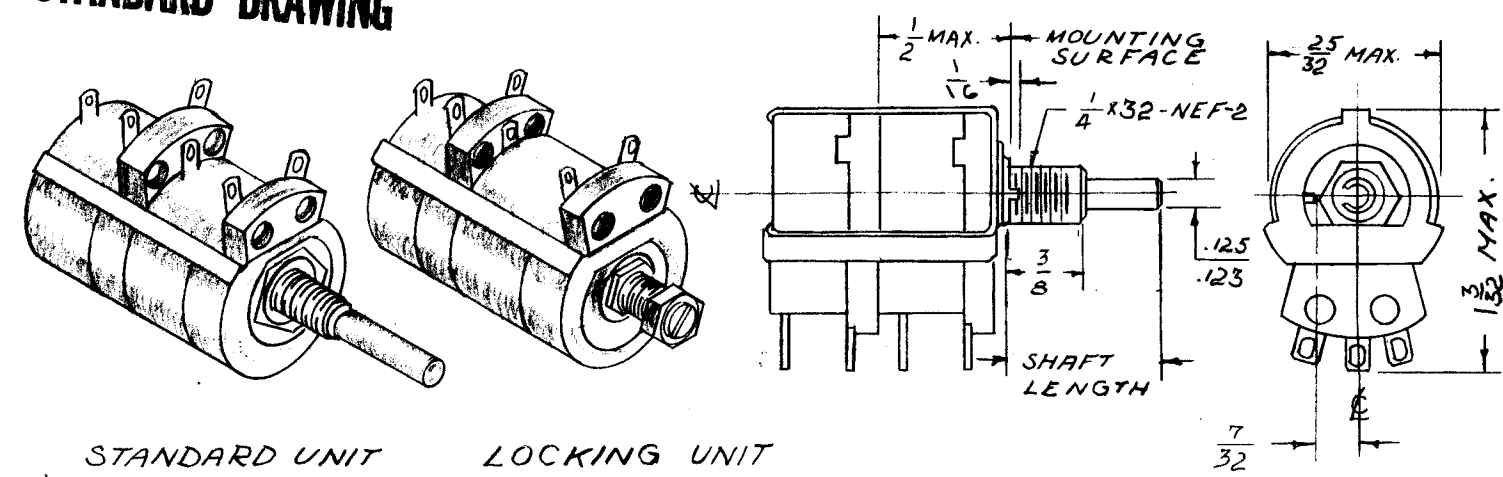


NOTE:
STANDARD SHAFT UNITS ARE SUPPLIED WITH ONE NICKEL PLATED MACHINED HEXAGON MOUNTING NUT, AND ONE INTERNAL TOOTH LOCKWASHER

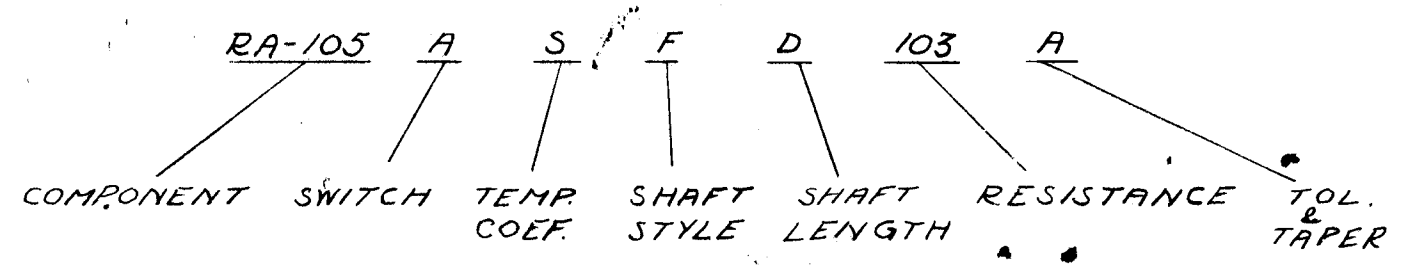
NOTE:
TO BE USED ONLY WHEN THE NEED FOR A MINIATURE POTENTIOMETER BECOMES MAANDATORY.

RA-105 A

STANDARD DRAWING



- CHARACTERISTICS
1. RESISTANCE - AVAILABLE IN ANY OHMAGE FROM 10 TO 20,000.
 2. VOLTAGE BREAKDOWN - 1000 VOLTS AC BETWEEN METAL MOUNTING SURFACE AND ELEMENT OR TERMINAL.
 3. TAPER - LINEAR THROUGH 300° MECHANICAL & ELECTRICAL ROTATIONS.
 4. SINGLE UNITS - AVAILABLE, SEE TMC DRAWING RA-103



REF: CLAROSTAT MFG. CO. INC. SERIES D 49

REQ.	ITEM	PART NO.	DESCRIPTION	SYMBOL
		— H —	THE TECHNICAL MATERIEL CORP. MAMARONECK, NEW YORK	
		STOCK SIZE		
		— H —	RESISTOR, ADJUSTABLE DUAL	
		MATERIAL	WIRE WOUND, 1.5 WATT	
		— H —		
		TYPE & TEMPER	RB.10-5-5+ K2	
		— H —		
		HEAT TREAT. SPEC.		
		— H —		
		FINISH & SPEC. NO.		

DRAWN: J. J. J.
 ELEC. DES. APP.: A. J. J.
 MECH. DES. APP.:
 CHECKED:
 FINAL APPROVAL:
RA-105 A

MODEL	PROJECT NO.	ASS'Y. NO.	DATE
-------	-------------	------------	------

IF IT IS FOUND DESIRABLE TO CHANGE ANY TOLERANCE OR OTHER DETAIL SPECIFIED ON THIS DRAWING NOTIFY THE PURCHASER PROMPTLY.

MAXIMUM ALLOWABLE TOLERANCES HAVE BEEN DETERMINED AND DEVIATIONS WILL BE CAUSE FOR REJECTION. REMOVE ALL BURRS AND SHARP EDGES

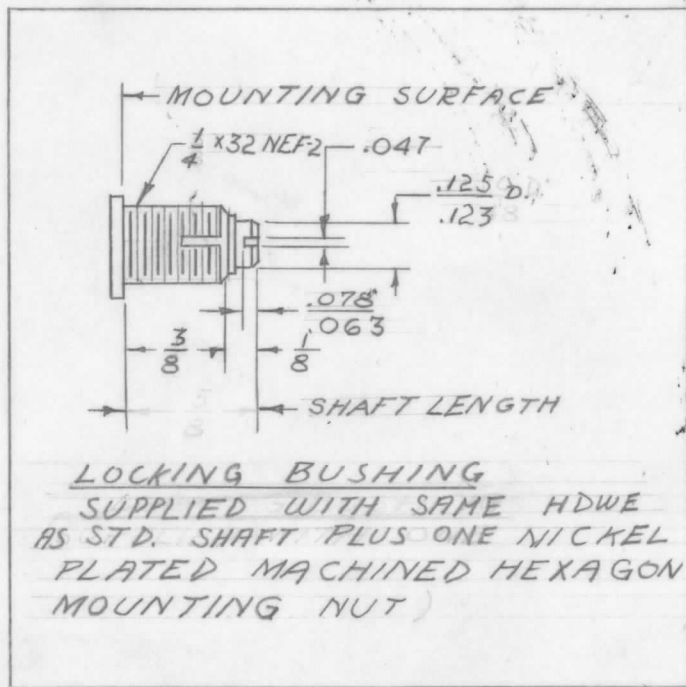
SWITCH	
A	NO SWITCH
B	SPST SW
C	DPST SW

STYLE OF SHAFT	
F	FLATTED
R	ROUND
S	SLOTTED
X	LOCK, SLOTTED

TEMPERATURE COEFFICIENT		
S	STANDARD	2 TO 10K, 160ppm 10K&UP 20ppm
Q	SPECIAL	20 ppm

TOLERANCE & TAPER	
A	ONLY AVAILABLE LINEAR ± 10%

SHAFT LENGTH			
LETTER DESIGNAT.	ROUND OR FLATTED	SLOTTED	LENGTH OF FLAT
A	--	5/8	--
C	--	3/4	--
D	7/8	7/8	.375
E	1	--	.500
G	1 1/4	1 1/4	.625 ±.010
H	1 1/2	1 1/2	.625
J	2	2	.625
K	2 1/2	2 1/2	2.125
M	--	7/16	--



NOTE:
STANDARD SHAFT UNITS ARE SUPPLIED WITH ONE NICKEL PLATED MACHINED HEXAGON MOUNTING NUT, AND ONE INTERNAL TOOTH LOCKWASHER

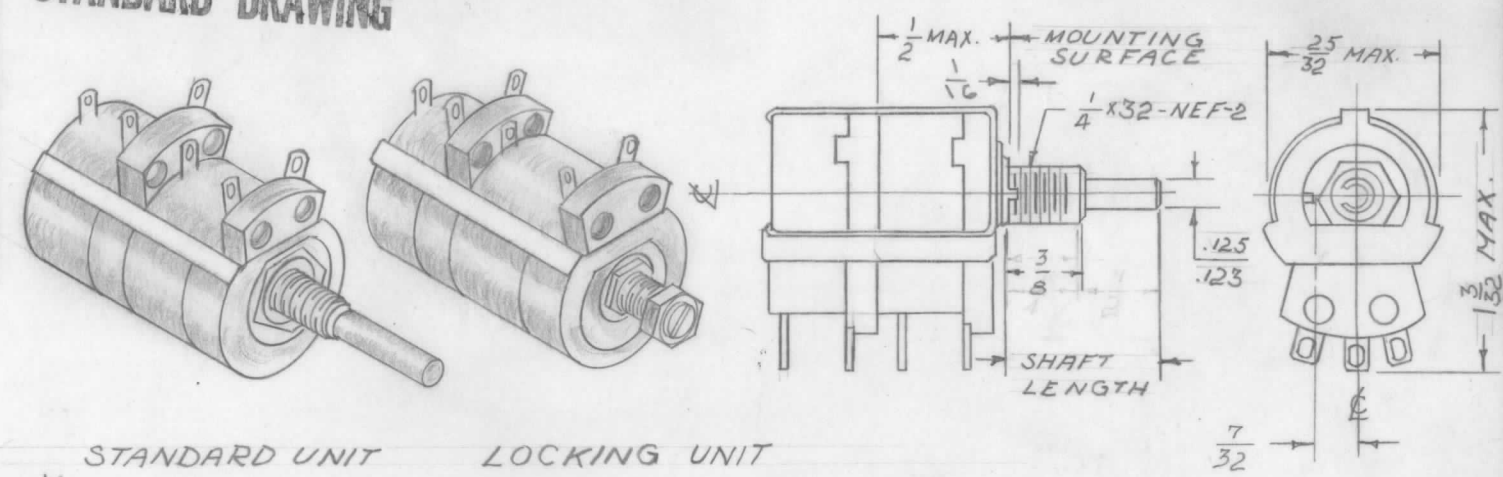
NOTE:
TO BE USED ONLY WHEN THE NEED FOR A MINIATURE POTENTIOMETER BECOMES MANDATORY.

A	1	LETTER 'M' ADDED	10/15	1	AB.	J. J. J.	
ISSUE	ITEM	CHANGED FROM	DATE	CN. NO.	DRAFTS	CHECKER	ENG. APP.
TOLERANCES		SCALE:					
ALL OTHERS	DEC. DIM. ± FRAC. DIM. ± ANGULAR DIM. ±	DRILL, PUNCH, COMMERCIAL STOCK SIZES AND MANUFACTURERS TOLERANCES ARE NOT INCLUDED.					

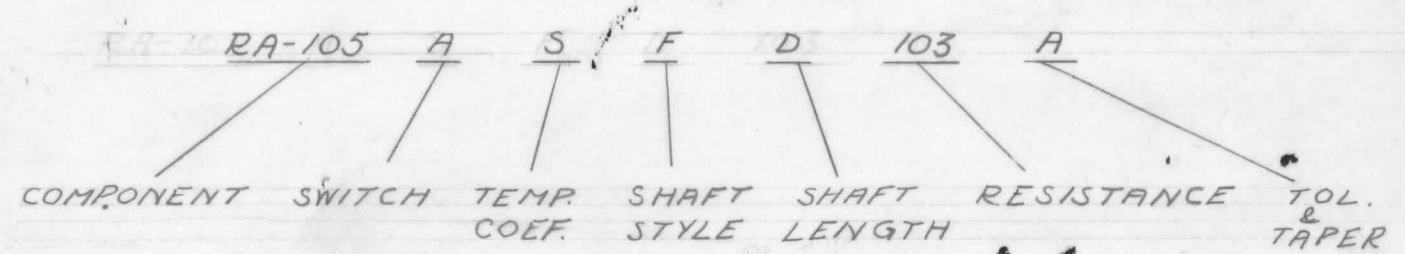
MODEL	PROJECT NO.	ASS'Y. NO.	DATE
USED ON			

RA-105 A

STANDARD DRAWING



- CHARACTERISTICS**
1. RESISTANCE - AVAILABLE IN ANY OHMAGE FROM 10 TO 20,000.
 2. VOLTAGE BREAKDOWN - 1000 VOLTS AC BETWEEN METAL MOUNTING SURFACE AND ELEMENT OR TERMINAL.
 3. TAPER - LINEAR THROUGH 300° MECHANICAL & ELECTRICAL ROTATIONS.
 4. SINGLE UNITS - AVAILABLE, SEE TMC DRAWING RA-103
 5. RESISTANCE TOLERANCE - STANDARD ± 10%



REF: CLAROSTAT MFG. CO. INC. SERIES D 49

REQ.	ITEM	PART NO.	DESCRIPTION	SYMBOL
	11		THE TECHNICAL MATERIEL CORP. MAMARONECK, NEW YORK	
	11	11	RESISTOR, ADJUSTABLE DUAL	
	11		WIRE WOUND, 1.5 WATT	
	11		TYPE & TEMPER	RB.10-5-5+ K2
	11		HEAT TREAT. SPEC.	WJ
	11		FINISH & SPEC. NO.	RA-105 A