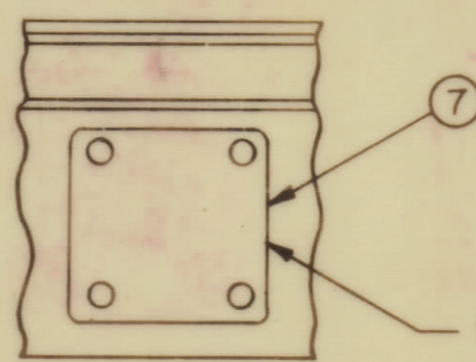
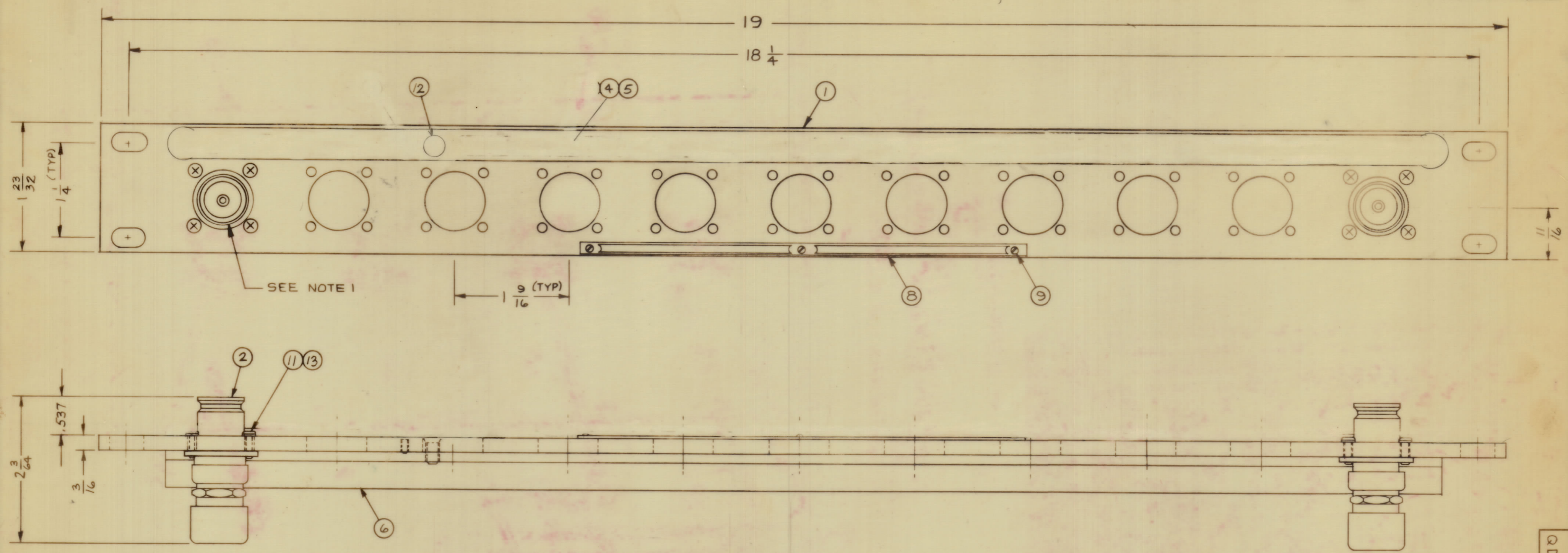


REVISIONS							
ZONE	SYM	DESCRIPTION	DATE	E.M.N. NO.	DRAFT	CHKD	APPD
	0	ORIGINAL RELEASE FOR PRODUCTION	5/22/64	0	A.M.		
A		ITEM 3 & ITEM 10 DELETED PICTORIAL UPDATED	6-6-64	22070	CBL		



DETAIL

- NOTE:
- CONNECTORS ARE MOUNTED FROM LEFT TO RIGHT.
  - WHEN CONNECTOR MOUNTING HOLES ARE NOT UTILIZED, COVER BLANKS (ITEM 7) ARE TO BE MOUNTED ON FACE OF FRONT PANEL.
  - REFER TO CHART FOR APPLICATION OF COVER BLANK (ITEM 7) WHEN REQUIRED.

MODEL	QUAN. ITEM 2	QUAN. ITEM 7
QDP-RG-9AIX11	11	0
QDP-RG-9AIX10	10	1
QDP-RG-9AIX9	9	2
QDP-RG-9AIX8	8	3
QDP-RG-9AIX7	7	4
QDP-RG-9AIX6	6	5
QDP-RG-9AIX5	5	6
QDP-RG-9AIX4	4	7
QDP-RG-9AIX3	3	8
QDP-RG-9AIX2	2	9
QDP-RG-9AIX1	1	10

REQ'D	ITEM	PART NUMBER	DESCRIPTION	SYMBOL
	X	15	S-721	TEST PROCEDURE
	1	14	S-345/QDS	ASSY PROCEDURE, CABLE & CONNECTOR
	44	13	LWE 04 MRN	WASHER, LOCK, EXTERNAL
	6	12	SCFPO632BN5	SCREW, MACHINE
	44	11	SCBPO440BN5	SCREW, MACHINE
		10		
	3	9	SFB0256SN3	SCREW, THREAD CUTTING
	1	8	NP-250	NAMEPLATE, IDENTIFICATION
SEE CHART	7	MS-3015-2	COVER, BLANK QDS	
	1	6	PM-486	BRACE, PANEL
	1	5	PX-396-17	GUARD, TAB
	1	4	PR-101-17	TAB, PAPER
		3		HOLDER, CARD
SEE CHART	2	JJ-149	CONNECTOR, RECEPTACLE	
	1	MS-1233	MACHINING, FRONT PANEL	

MATERIAL		THE TECHNICAL MATERIEL CORP.	
ALUMINUM		MAMARONECK, NEW YORK	
FINISH TMC SMOOTH GRAY SEMI-GLOSS ENAMEL		TITLE PATCH PANEL, RF QDS TO CABLE	
UNLESS OTHERWISE SPECIFIED DIMENSIONS ARE IN INCHES AND INCLUDE CHEMICALLY APPLIED OR PLATED FINISHES		DRAWN M.J. TANTILLO	DATE 5-21-64
TOLERANCES		CHECKED [Signature]	DATE 5-21-64
DECIMALS: .XX ± .01, .XXX ± .005		MECH. DES. [Signature]	DATE 5-21-64
FRACTIONS: ± 1/64, ANGLES: ± 0° 30'		FINAL APPROVAL [Signature]	
		DATE 5-21-64	
		SHEET	
		REV. LTR.	

1 SEE CHART

QTY/UNIT MODEL USED ON ASSY. NO.

SCALE CODE

THE CONTENTS OF THIS DRAWING ARE THE EXCLUSIVE PROPERTY OF THE TECHNICAL MATERIEL CORP. ITS UNAUTHORIZED USE OR REPRODUCTION IN WHOLE OR IN PART IS STRICTLY FORBIDDEN.

NOTES

QDP-RG-9AIX11