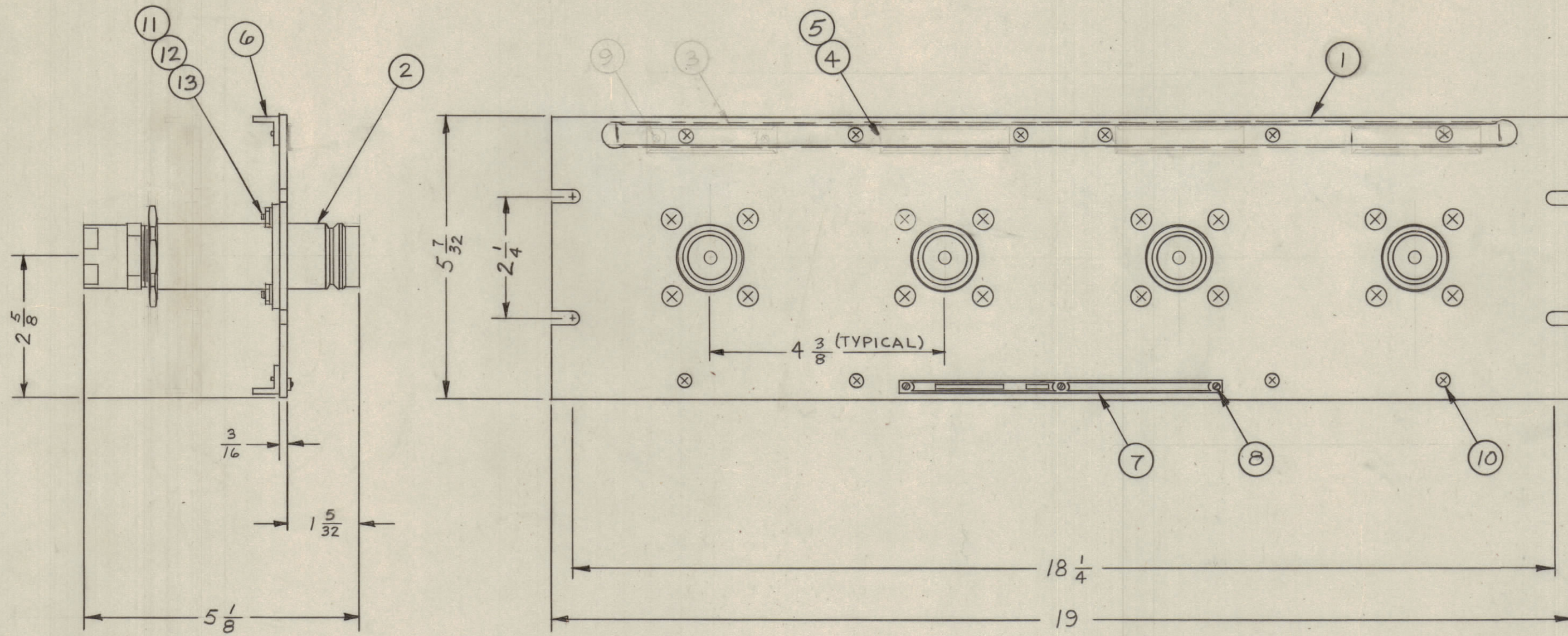


| REVISIONS |     |   |         |            |       |      |      |
|-----------|-----|---|---------|------------|-------|------|------|
| ZONE      | SYM | DESCRIPTION   | DATE    | E.M.N. NO. | DRAFT | CHKD | APPD |
|           | Ø   | ORIGINAL RELEASE FOR PRODUCTION                                     | 11/2/71 |            | W     | W    | W    |
| A         |     | ITEM 3 MS-576 & ITEM 9 DEL. PICT. UPDATED<br>CHANGE ITEM 4 & ITEM 7 | 4-5-84  | 22051      | GDL   |      | QDL  |



| SEE NOTE | REQ'D. | ITEM | PART NUMBER   | DESCRIPTION                       | SYMBOL                  |
|----------|--------|------|---------------|-----------------------------------|-------------------------|
| 15       |        |      | S-345/QDL     | ASSY PROCEDURE, CABLE & CONNECTOR | △                       |
| X        |        |      | S-721         | TEST PROCEDURE                    |                         |
| 16       |        |      | NTH 1032BN12  | NUT, HEXAGON                      |                         |
| 16       |        |      | LWE 10MRN     | WASHER, LOCK, EXTERNAL            |                         |
| 16       |        |      | SCFPI032 BN10 | SCREW, MACHINE                    |                         |
| 12       |        |      | SCFPO632BN5   | SCREW, MACHINE                    |                         |
|          |        |      | <del>9</del>  | <del>SCREW, MACHINE</del>         |                         |
| 3        |        |      | SFB0256SN3    | SCREW, THREAD CUTTING             |                         |
| 1        |        |      | NP-250        | NAMEPLATE IDENTIFICATION          |                         |
| 2        |        |      | PM-490        | BRACE, PANEL                      |                         |
| 4        |        |      | PX-396-17     | GUARD, TAB                        |                         |
| 4        |        |      | PR-101-17     | TAB, PAPER                        |                         |
|          |        |      | <del>3</del>  | <del>MS-576</del>                 | <del>HOLDER, CARD</del> |
| 4        |        |      | JJ-208        | ADAPTOR, CONNECTOR                |                         |
| 1        |        |      | MS-1078-1     | MACHINING, FRONT PANEL            |                         |

| MATERIAL  |            | LIST OF MATERIAL                                     |       |
|---|------------|--|-------|
| ALUMINUM  |            | THE TECHNICAL MATERIEL CORP.<br>MAMARONECK, NEW YORK |       |
| FINISH TMC SMOOTH GRAY<br>SEMI-GLOSS ENAMEL   |            | TITLE PATCH PANEL, JACK<br>QDL TO CABLE              |       |
| DRAWN<br>CHECKED<br>DATE  | DATE       | FINAL APPROVAL<br>DATE                               | DATE  |
| ELECT. DES.<br>MECH. DES.   | DATE       | DATE   | DATE  |
| UNLESS OTHERWISE SPECIFIED<br>DIMENSIONS ARE IN INCHES AND INCLUDE<br>CHEMICALLY APPLIED OR PLATED FINISHES |            | QDP-RG218C2X4  |       |
| DECIMALS<br>.X ± .05<br>.XX ± .01<br>.XXX ± .005  | TOLERANCES | FRACTIONS<br>± 1/64<br>ANGLES<br>± 0° 30'            | SHEET |

NOTES

THE CONTENTS OF THIS DRAWING ARE THE EXCLUSIVE PROPERTY OF THE TECHNICAL MATERIEL CORP. ITS UNAUTHORIZED USE OR REPRODUCTION IN WHOLE OR IN PART IS STRICTLY FORBIDDEN.

QDP-RG218C2X4