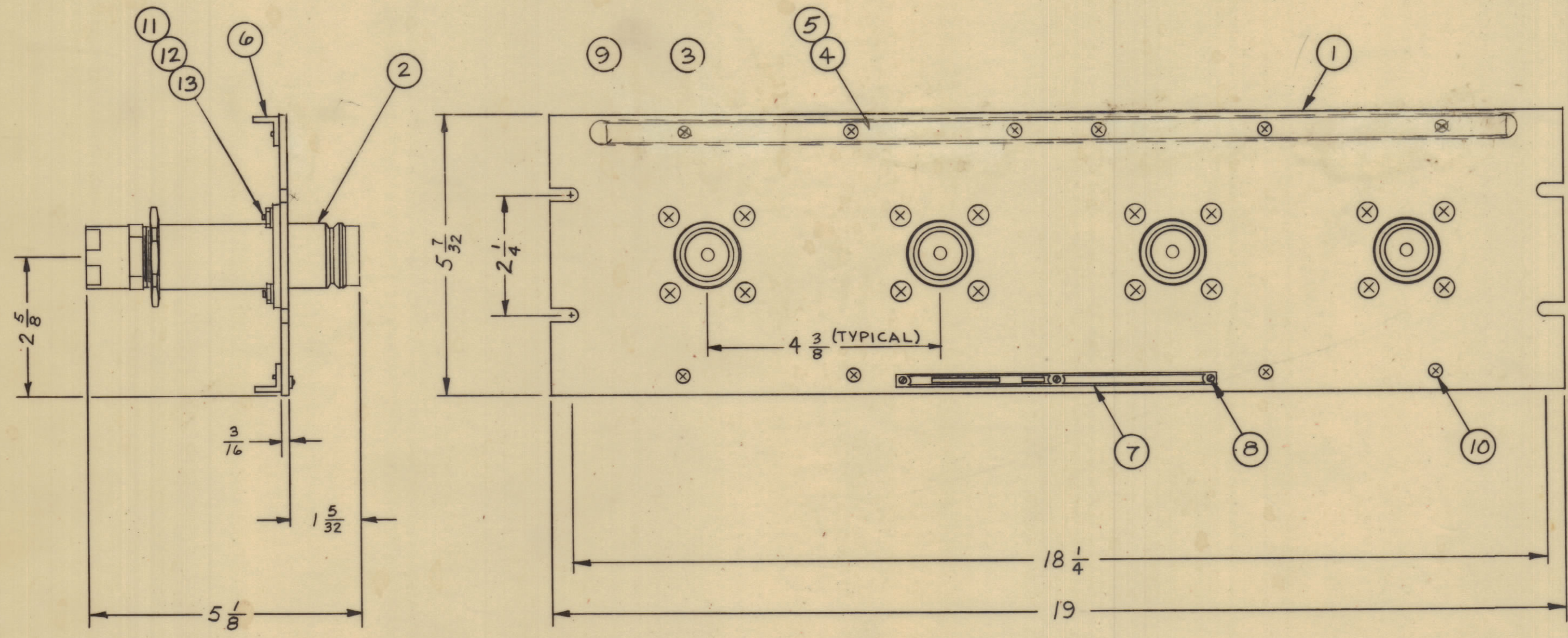


REVISIONS						
ZONE	SYM	DESCRIPTION	DATE	E.M.N. NO.	DRAFT	CHKD
B2	A	ITEM (1) WAS A-1349-1	3-12-63	8523		
	B	ITEM (3) MS 576 & ITEM 9 DELETED PICT. UPDATED CHANGE ITEM 4 & ITEM 5	4-5-64	22051		GDL

H
G
F
E
D
C
B
A



SEE NOTE	REQ'D.	ITEM	PART NUMBER	DESCRIPTION	SYMBOL
	15		S-345/QDL	ASSY PROCEDURE, CABLE & CONNECTOR	
X	14		S-721	TEST PROCEDURE	
	16	13	NTH 1032BN12	NUT, HEXAGON	
	16	12	LWE10MRN	WASHER, LOCK, EXTERNAL	
	16	11	SCFP1032BN10	SCREW, MACHINE	
	12	10	SCFP0632BN5	SCREW, MACHINE	
		9			
	3	8	SFBO256SN3	SCREW, THREAD CUTTING	
	1	7	NP-250	NAMEPLATE IDENTIFICATION	
	2	6	PM-490	BRACE, PANEL	
	1	5	PX-396-17	GUARD, TAB	
	1	4	PX-101-17	TAB, PAPER	
		3			
	4	2	JJ-208	ADAPTOR, CONNECTOR	
	1	1	MS-1078-1	MACHINING, FRONT PANEL	

MARTINENGO LIST OF MATERIAL

MATERIAL	ALUMINUM	THE TECHNICAL MATERIEL CORP. MAMARONECK, NEW YORK
FINISH	TMC SMOOTH GRAY SEMI-GLOSS ENAMEL	TITLE PATCH PANEL, JACK QDL TO CABLE

1	QDP-RG17AC2X4	ASSY. NO.
Q'TY./UNIT	MODEL USED ON	
SCALE	CODE	
THE CONTENTS OF THIS DRAWING ARE THE EXCLUSIVE PROPERTY OF THE TECHNICAL MATERIEL CORP. ITS UNAUTHORIZED USE OR REPRODUCTION IN WHOLE OR IN PART IS STRICTLY FORBIDDEN.		
DECIMALS X ± .05 XX ± .01 XXX ± .005	TOLERANCES	FRACTIONS ± 1/64 ANGLES ± 0° 30'

NOTES

UNLESS OTHERWISE SPECIFIED DIMENSIONS ARE IN INCHES AND INCLUDE CHEMICALLY APPLIED OR PLATED FINISHES	DRAWN M.J. TANTILLO	DATE 2-28-63	FINAL APPROVAL <i>[Signature]</i>	DATE 2/28/63
	ELECT. DES. <i>[Signature]</i>	DATE 2/28/63		
	MECH. DES. <i>[Signature]</i>	DATE 2/28/63		

QDP-RG17AC2X4	B
REV. 1	

QDP-RG17AC2X4