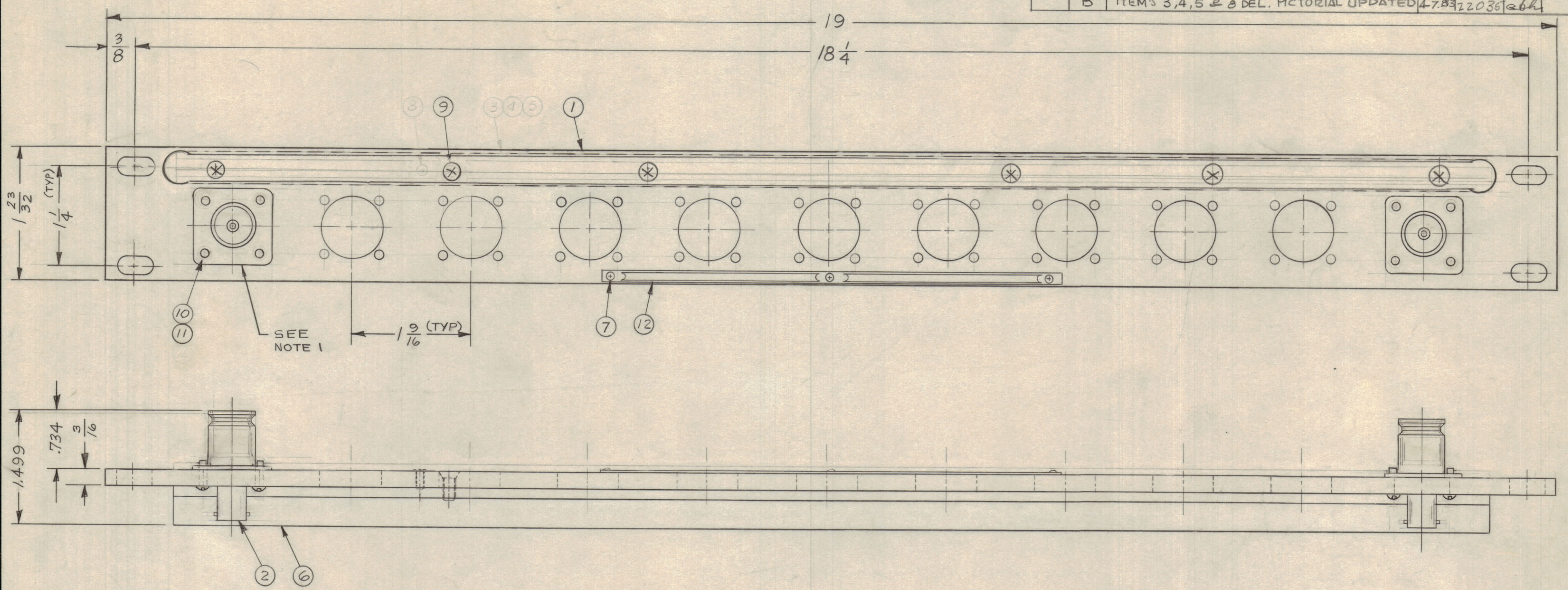
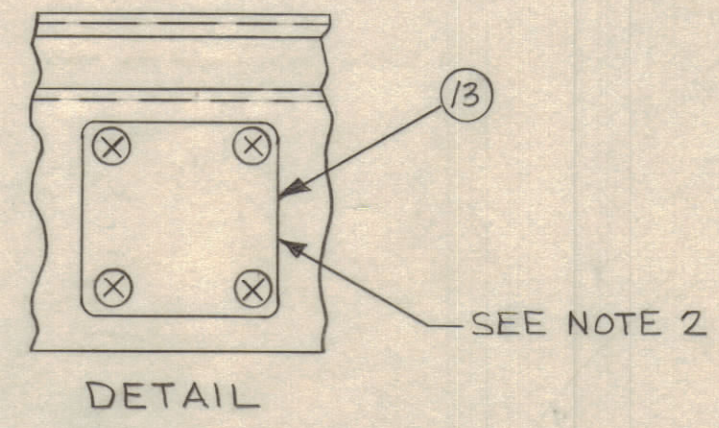


REVISIONS					
ZONE	SYM	DESCRIPTION	DATE	E.M.N. NO.	APPD
A		ITEM 10 WAS SCBPO440 BNS, ITEM 14 WAS NTH0440 BNS	2-8-61	18660	EFM
B		ITEM'S 3,4,5 & 8 DEL. PICTORIAL UPDATED	4-7-63	22036	ebh



QDP-4AIX11	11	0
QDP-4AIX10	10	1
QDP-4AIX9	9	2
QDP-4AIX8	8	3
QDP-4AIX7	7	4
QDP-4AIX6	6	5
QDP-4AIX5	5	6
QDP-4AIX4	4	7
QDP-4AIX3	3	8
QDP-4AIX2	2	9
QDP-4AIX1	1	10
MODEL	QUAN. ITEM 2	QUAN. ITEM 13



- NOTE:
- CONNECTORS ARE MOUNTED FROM LEFT TO RIGHT.
  - WHEN CONNECT MOUNTING HOLES ARE NOT UTILIZED COVER BLANKS (ITEM 13) ARE TO BE MOUNTED ON FACE OF FRONT PANEL.
  - REFER TO CHART FOR APPLICATION OF COVER BLANK (ITEM 13) WHEN REQUIRED.

REQ'D.	ITEM	PART NUMBER	DESCRIPTION	SYMBOL
X	15	S-721	TEST PROCEDURE	
	14	DELETED		
SEE CHART	13	MS-3015-1	COVER BLANK QDS	
	1	NP-250	NAMEPLATE, IDENTIFICATION	
	44	LWE04MRN	LOCKWASHER, EXTERNAL	
	44	SCBPO440 BNS	SCREW, MACHINE	
	6	SCFP0632BNS	SCREW, MACHINE	
	2	SCFP-4BNS3	SCREW, MACHINE	
	3	SFB0256SN3	SCREW, MACHINE	
	1	PM-486	BRACE, PANEL	
	1	PX 396-17	GUARD TAB	
	1	PR 101-17	TAB PAPER	
	1	MS-486	HOLDER, TAB	
SEE CHART	2	JJ-227	ADAPTOR, CONNECTOR	
	1	MS-1233	MACHINING, FRONT PANEL	

MATERIAL		THE TECHNICAL MATERIEL CORP.	
ALUMINUM		MAMARONECK, NEW YORK	
FINISH TMC SMOOTH GRAY SEMI-GLOSS ENAMEL		TITLE PATCH PANEL, RF QDS TO BNC	
UNLESS OTHERWISE SPECIFIED DIMENSIONS ARE IN INCHES AND INCLUDE CHEMICALLY APPLIED OR PLATED FINISHES		DRAWN J. RAMIREZ DATE 9/13/62	
DECIMALS .X ± .05 .XX ± .01 .XXX ± .005		CHECKED JRC DATE 12/6/62	
FRACTIONS ± 1/64 ANGLES ± 0° 30'		ELECT. DES. JRC DATE 12/6/62	
TOLERANCES		MECH. DES. am DATE 12/6/62	
THE CONTENTS OF THIS DRAWING ARE THE EXCLUSIVE PROPERTY OF THE TECHNICAL MATERIEL CORP. ITS UNAUTHORIZED USE OR REPRODUCTION IN WHOLE OR IN PART IS STRICTLY FORBIDDEN.		FINAL APPROVAL BP DATE 12/6/62	
NOTES		QDP-4AIX11 B	
		SHEET 1	
		REV. LTR.	

QDP-4AIX11 B