

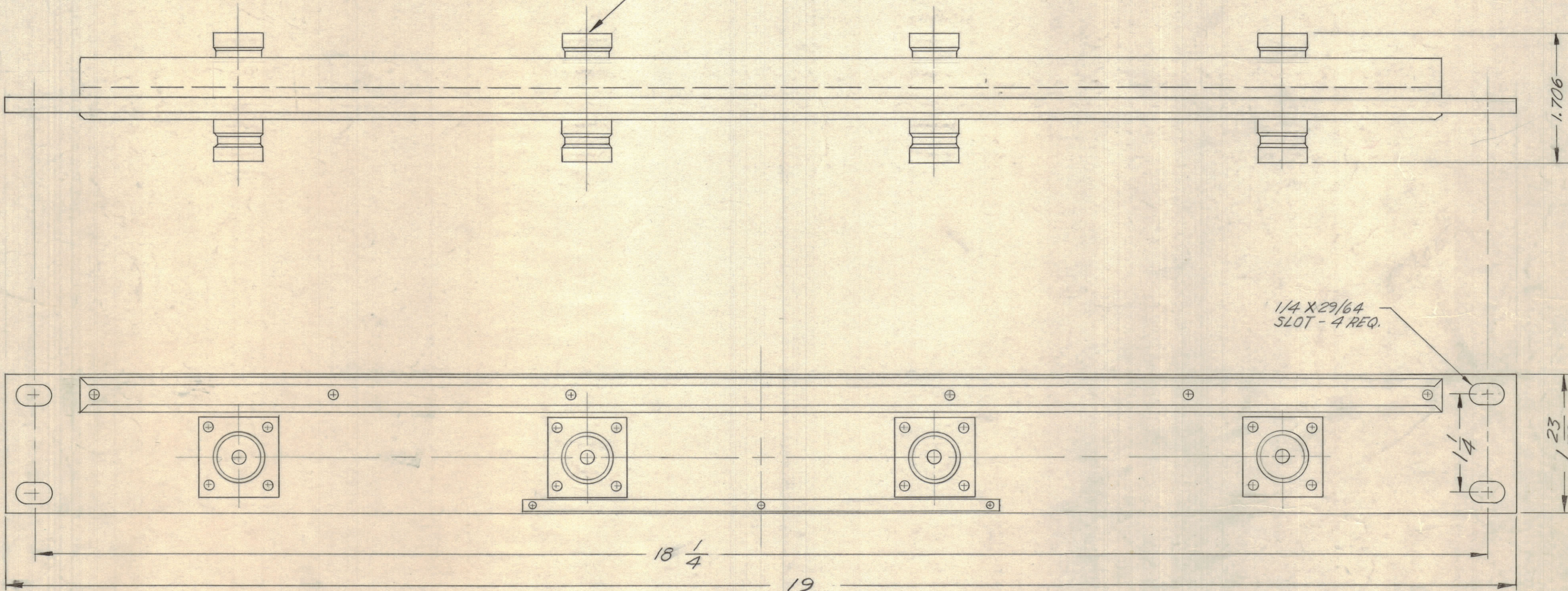
NOTICE TO PERSONS RECEIVING THIS DRAWING

THE TECHNICAL MATERIEL CORPORATION claims proprietary right in the material disclosed herein. This drawing is issued in confidence for engineering information only and may not be reproduced or used to manufacture anything shown hereon without permission from THE TECHNICAL MATERIEL CORPORATION to the user. This drawing is loaned for mutual assistance and is subject to recall at any time.

Property of:
THE TECHNICAL MATERIEL CORPORATION
MAMARONECK, NEW YORK

JJ-141 ADAPTER, CONNECTOR,
QDS TO QDS (4 REQ.)

1/4 X 29/64
SLOT - 4 REQ.



OBSOLETE
REPLACED BY QDP-1A1X4
11-1-62

SYM	ZONE	DESCRIPTION	DATE	CH. NO.	DRAFTS	CHECKER	ENG. APP.
A	C2	REPLACED BY QDP-1A1X4	11-1-62	7580	CP	W.D.	W.D.
UNLESS OTHERWISE SPECIFIED:			SCALE				
DIMENSIONS ARE IN INCHES			MAXIMUM ALLOWABLE TOLERANCES HAVE BEEN DETERMINED AND ANY DEVIATIONS WILL BE CAUSE FOR REJECTION. REMOVE ALL BURRS & SHARP EDGES				
TOLERANCES ON FRACTIONS ± 1/64			DECIMALS ± .005		ANGLES ± 1/2°		

REQ. PER UNIT	MODEL	SECTION	ASS'Y. NO.	DATE
	QDP-34			9-27-61
USED ON				

REQ. ITEM	PART NO.	DESCRIPTION
		THE TECHNICAL MATERIEL CORPORATION MAMARONECK, N.Y.
		PATCH PANEL, 1
		MATERIAL
		TYPE & TEMPER
		HEAT TREAT. SPEC.
		FINISH & SPEC. NO.
		ELEC. DES. APP.