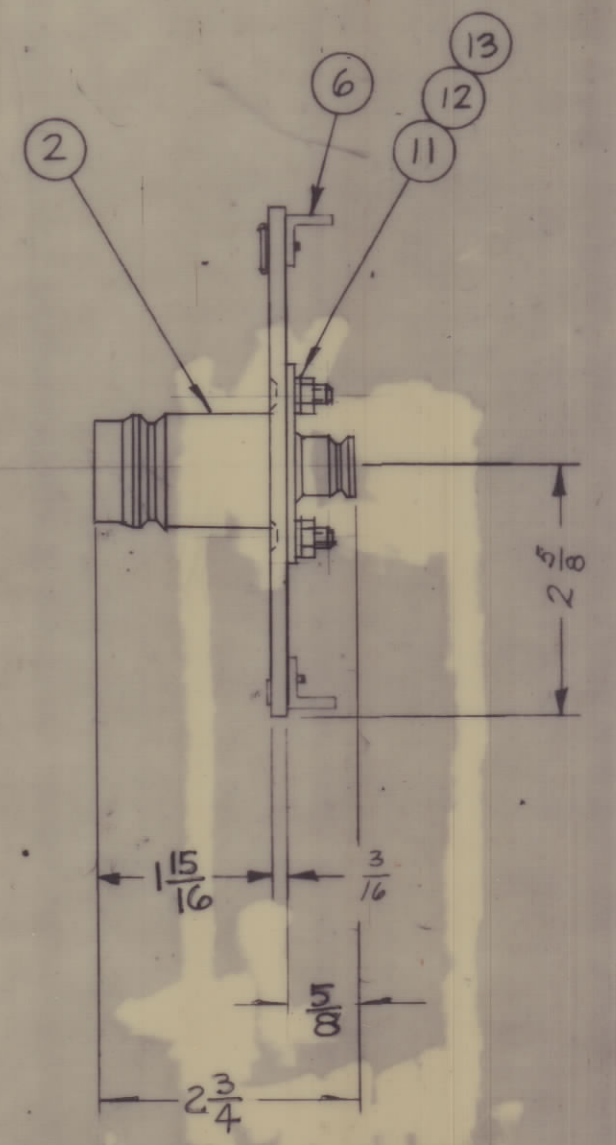
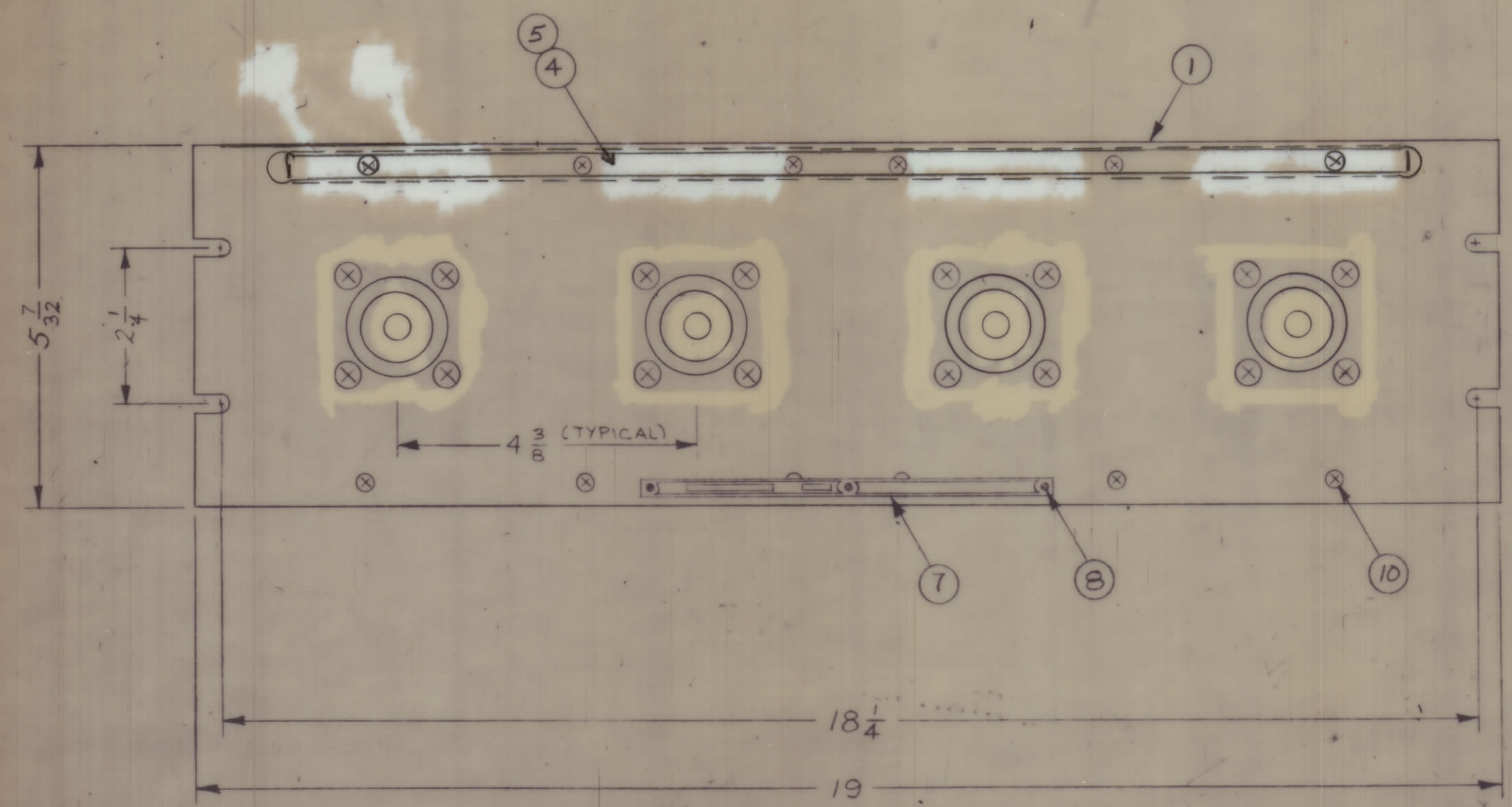


REVISIONS							
ZONE	SYM	DESCRIPTION	DATE	E.M.N. NO.	DRAFT	CHKD	APPD
	Ø	ORIGINAL RELEASE FOR PROD.	1/2/66	Ø			
	A	ITEM 3 MS 576 & ITEM 9 DELETED, PICT. UPDATED	4-4-66	21051	GDL		



REQ'D.	ITEM	PART NUMBER	DESCRIPTION	SYMBOL
X	14	S-721	TEST PROCEDURE	
16	13	NTH 1032 BN 12	NUT, HEXAGON	
16	12	LWE 10 MRN	WASHER, LOCK, EXTERNAL	
16	11	SCFP1032BN9	SCREW, MACHINE	
12	10	SCFP0632BN5	SCREW, MACHINE	
7	9			
3	8	SFB0256 SN3	SCREW, THREAD CUTTING	
1	7	NP-250	NAMEPLATE, IDENTIFICATION	
2	6	PM-490	BRACE, PANEL	
1	5	PX 396-17	GUARD, TAB	
1	4	PR-101-17	TAB, PAPER	
4	3			
4	2	JJ-139	ADAPTER, CONNECTOR	
1	1	MS-1078-1	MACHINING, FRONT PANEL	

MATERIAL		LIST OF MATERIAL	
ALUMINUM		THE TECHNICAL MATERIEL CORP. MAMARONECK, NEW YORK	
FINISH TMC SMOOTH GRAY SEMI-GLOSS ENAMEL		TITLE PATCH PANEL, QUICK DISCONNECT QDL TO QDS	
UNLESS OTHERWISE SPECIFIED DIMENSIONS ARE IN INCHES AND INCLUDE CHEMICALLY APPLIED OR PLATED FINISHES	DRAWN <i>[Signature]</i>	DATE 10/21/65	FINAL APPROVAL <i>[Signature]</i>
DECIMALS .X ± .05 .XX ± .01 .XXX ± .005	TOLERANCES ± 1/64 ANGLES ± 0° 30'	CHECKED <i>[Signature]</i>	DATE 1-20-66
		ELECT. DES. <i>[Signature]</i>	DATE 10/20/65
		MECH. DES. <i>[Signature]</i>	DATE 10/20/65

1	QDP-1C2X4	ASS'Y. NO.
Q'TY./UNIT	MODEL USED ON	ASS'Y. NO.
SCALE	CODE	

NOTES

THE CONTENTS OF THIS DRAWING ARE THE EXCLUSIVE PROPERTY OF THE TECHNICAL MATERIEL CORP. ITS UNAUTHORIZED USE OR REPRODUCTION IN WHOLE OR IN PART IS STRICTLY FORBIDDEN.

QDP-1C2X4 A

2 FILE 28 1/20/66