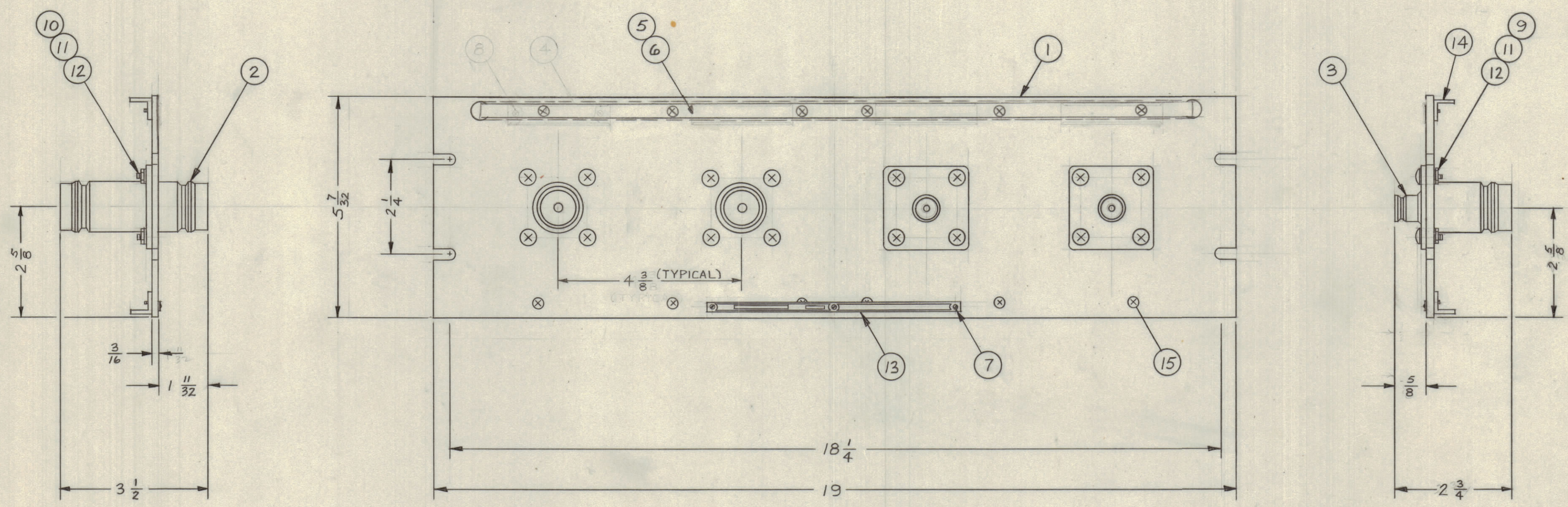


REVISIONS							
ZONE	SYM	DESCRIPTION	DATE	E.M.N. NO.	DRAFT	CHKD	APPD
	A	ITEM 4 MS 576 ← ITEM 8 DELETED PICT. UPDATED CHANGE ITEM 4 ← ITEM 5	4.5.84	22051	GDL		



QDP-12C22X4

REQ'D.	ITEM	PART NUMBER	DESCRIPTION	SYMBOL
X	16	S-721	TEST PROCEDURE	
	12	SCFP0632BN5	SCREW, MACHINE	
	2	PM-490	BRACE, PANEL	
	1	NP-250	NAMEPLATE IDENTIFICATION	
	16	12	NTH1032BN12	NUT, HEXAGON
	16	11	LWE10MRN	WASHER, LOCK EXTERNAL
	8	10	SCFP1032BN9	SCREW, MACHINE
	8	9	SCBP1032BN9	SCREW, MACHINE
	8	8	SCFP032BN4	SCREW, MACHINE
	3	7	SFB0256SN3	SCREW, THREAD CUTTING
	1	6	PX-396-17	GUARD, TAB
	1	5	PR 101-17	TAB, PAPER
	1	4	MS-576	HOLDER, CARD
	2	3	JJ-139	ADAPTOR CONNECTOR QDL TO QDS
	2	2	JJ-138	ADAPTOR, CONNECTOR QDL TO QDL
	1	1	MS-1078-1	MACHINING, FRONT PANEL

MATERIAL		LIST OF MATERIAL	
ALUMINUM		THE TECHNICAL MATERIEL CORP. MAMARONECK, NEW YORK	
FINISH TMC SMOOTH GRAY SEMI-GLOSS ENAMEL		TITLE PATCH PANEL, QUICK DISCONNECT QDL TO QDL / QDL TO QDS	
DRAWN M.J. TANTILLO	DATE 9-26-62	FINAL APPROVAL BP	DATE
CHECKED [Signature]	DATE 9/27/62	QDP-12C22X4	
ELECT. DES. [Signature]	DATE 9/27/62	SHEET	
MECH. DES. [Signature]	DATE 9/27/62	REV. LTR.	

1	QDP-12C22X4	
QTY./UNIT	MODEL USED ON	ASS'Y. NO.
SCALE	CODE	

NOTES

THE CONTENTS OF THIS DRAWING ARE THE EXCLUSIVE PROPERTY OF THE TECHNICAL MATERIEL CORP. ITS UNAUTHORIZED USE OR REPRODUCTION IN WHOLE OR IN PART IS STRICTLY FORBIDDEN.