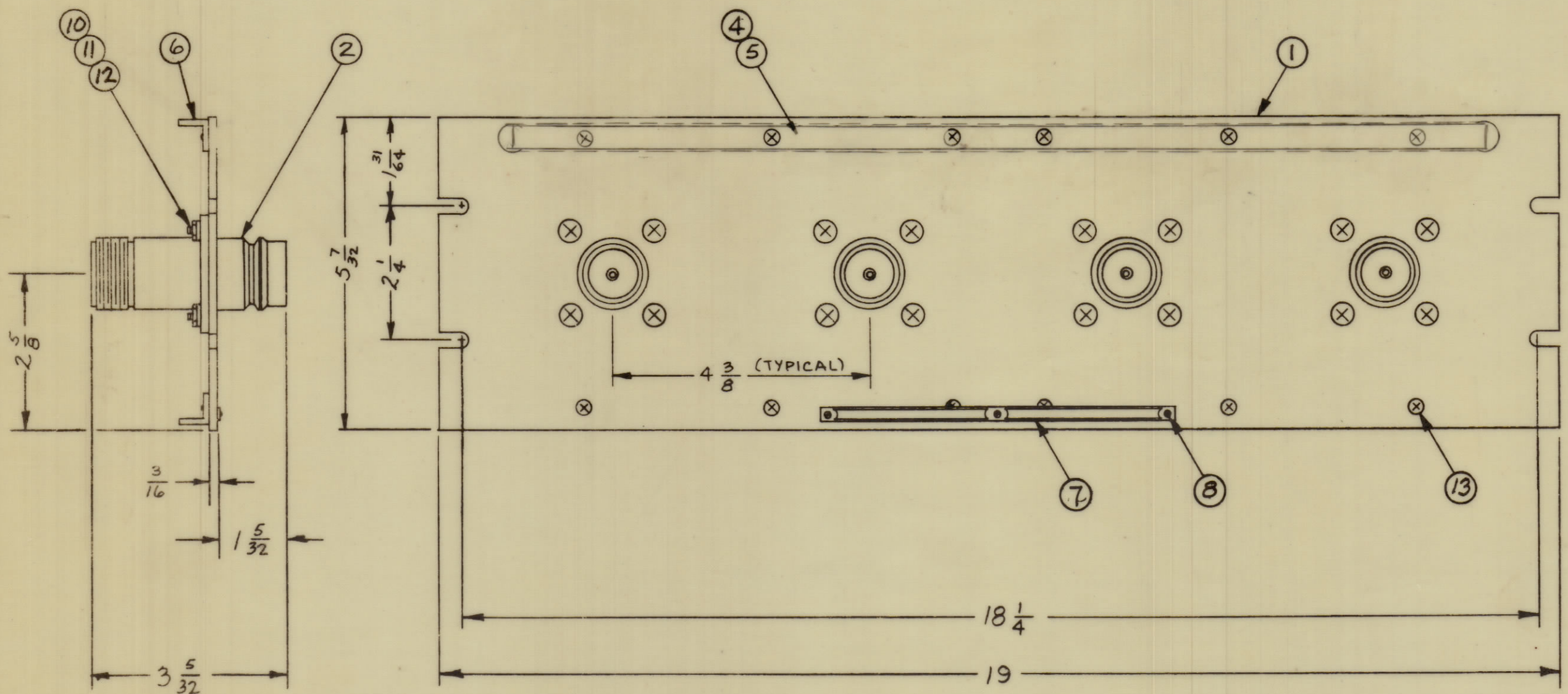


REVISIONS							
ZONE	SYM	DESCRIPTION	DATE	E.M.N. NO.	DRAFT	CHKD	APPD
Ø		ORIGINAL RELEASE FOR PRODUCTION	3-10-65		HLD		
A		ITEM 3 MS-576 & ITEM 9 DELETED, PICT. UPDATED	4-4-64	22051	GDL		

H
G
F
E
D
C
B
A



QDP-10C2X4

X	14	S-721	TEST PROCEDURE
12	13	SCFP 0632 BN5	SCREW, MACHINE
16	12	NTH 1032 BN12	NUT, HEXAGON
16	11	LWE 10 MRN	WASHER, LOCK, EXTERNAL
16	10	SCFP1032 BN9	SCREW, MACHINE
	9		
3	8	SFB 0256 SN3	SCREW, THREAD CUTTING
1	7	NP-250	NAMEPLATE, IDENTIFICATION
2	6	PM-490	BRACE, PANEL
1	5	PX-396-17	GUARD, TAB
1	4	PR 101-17	TAB, PAPER
	3		
4	2	JJ-322	CONNECTOR, RECEPTACLE
1	1	MS-1078-1	MACHINING, FRONT PANEL

REQ'D.	ITEM	PART NUMBER	DESCRIPTION	SYMBOL
LIST OF MATERIAL				
MATERIAL		ALUMINUM		
FINISH		TMC SMOOTH GRAY SEMI-GLOSS ENAMEL		
THE TECHNICAL MATERIEL CORP.		MAMARONECK, NEW YORK		
TITLE		PATCH PANEL, QUICK DISCONNECT "QDL" TO "LT"		
DRAWN	M. TANTILLO	DATE	12/15/64	FINAL APPROVAL
CHECKED	JSC	DATE	12/15/64	
ELECT. DES.		DATE		
MECH. DES.		DATE	12-14-64	
UNLESS OTHERWISE SPECIFIED DIMENSIONS ARE IN INCHES AND INCLUDE CHEMICALLY APPLIED OR PLATED FINISHES				
DECIMALS		TOLERANCES		
.X ± .05		FRACTIONS ± 1/64		
.XX ± .01		ANGLES ± 0° 30'		
.XXX ± .005				

QDP-10C2X4		
Q'TY./UNIT	MODEL USED ON	ASS'Y. NO.
SCALE	CODE	
THE CONTENTS OF THIS DRAWING ARE THE EXCLUSIVE PROPERTY OF THE TECHNICAL MATERIEL CORP. ITS UNAUTHORIZED USE OR REPRODUCTION IN WHOLE OR IN PART IS STRICTLY FORBIDDEN.		

NOTES

7 6 5 4 3 2 1