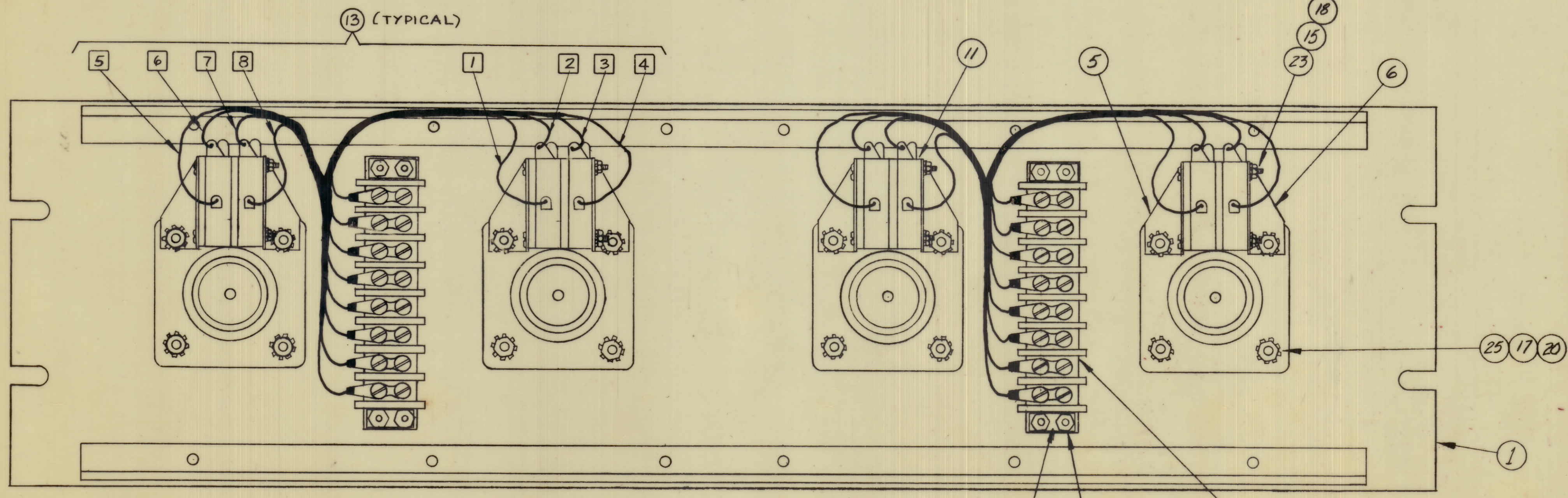
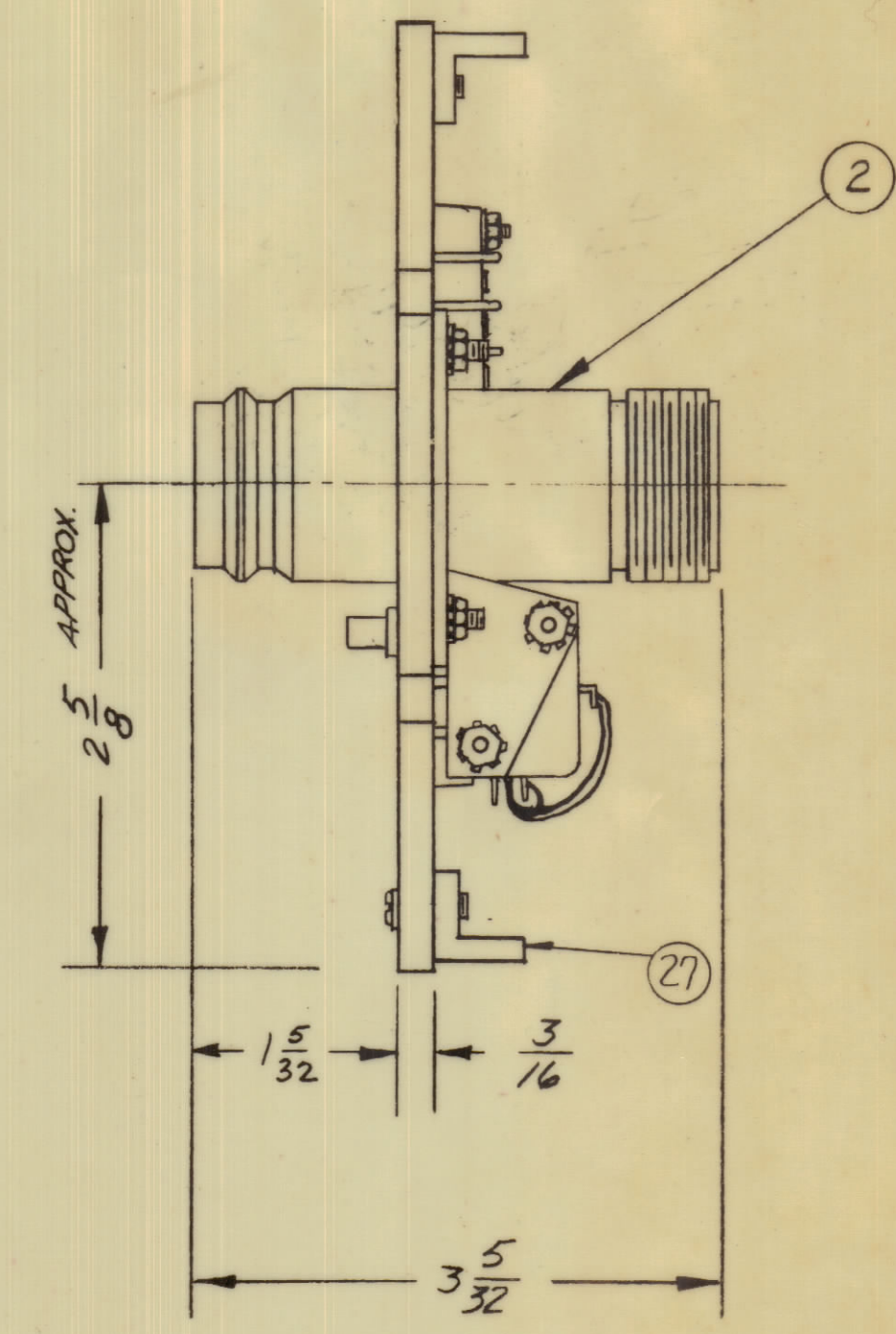
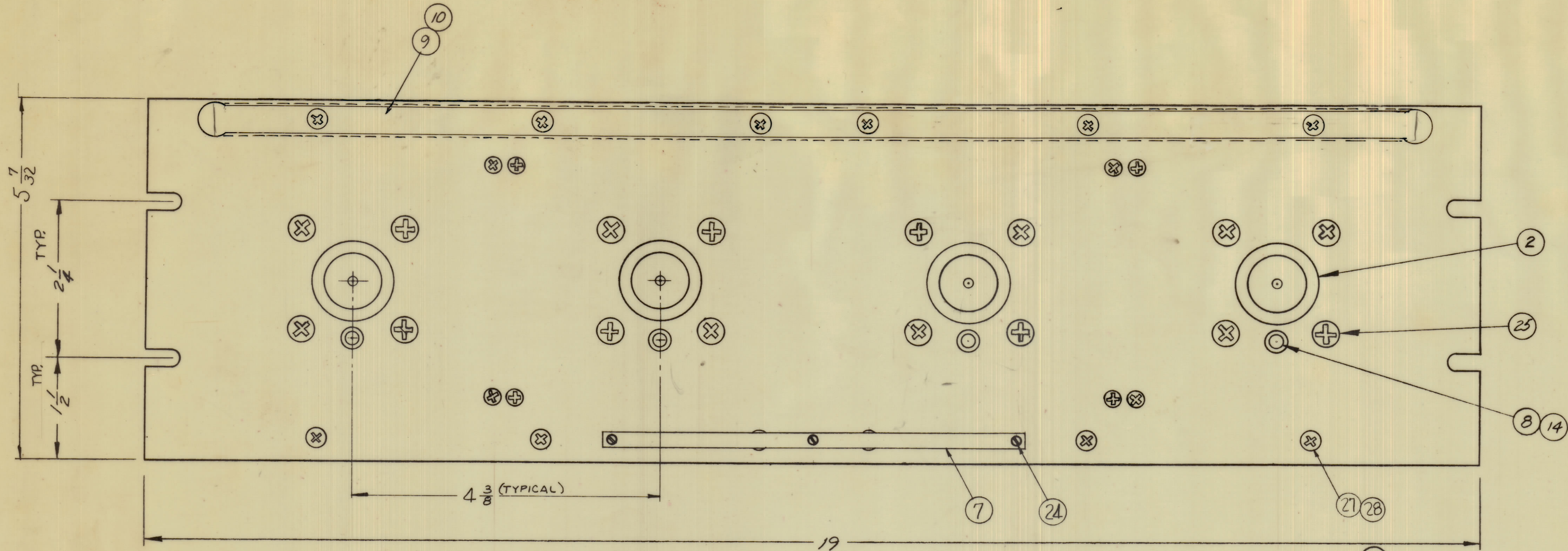


NOTICE TO PERSONS RECEIVING THIS DRAWING

THE TECHNICAL MATERIEL CORPORATION claims proprietary right in the design of this drawing. This drawing is issued in confidence and is to be used for information only and may not be reproduced, copied, or transmitted in any form or by any means without the written permission of THE TECHNICAL MATERIEL CORPORATION. THE TECHNICAL MATERIEL CORPORATION is not responsible for any assistance and is not to be held liable for any failure.

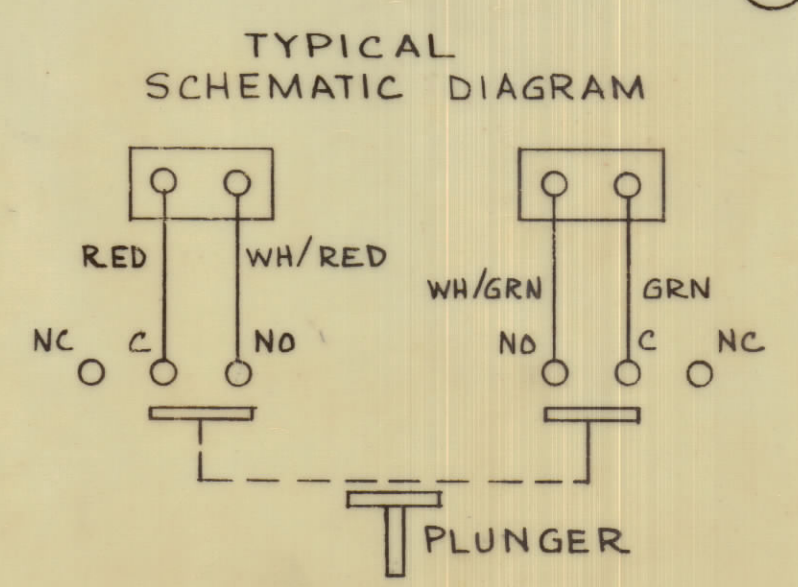
THE TECHNICAL MATERIEL CORPORATION
MAMARONECK, NEW YORK



QTY	ITEM	PART NO.	DESCRIPTION	SYMBOL
X	29	S-716	TEST PROCEDURE	
12	28	SCFP0632BN5	SCREW, MACHINE	
2	27	PM-490	BRACE PANEL	
-	26	DELETED		
16	25	SCFP1032BN9	SCREW, MACHINE	
3	24	SFB0256SN3	SCREW, THREAD CUTTING	
8	23	SCBP0440BN16	SCREW, MACHINE	
8	22	SCFP0440BN10	SCREW, MACHINE	
-	21			
16	20	NTH1032BN10	NUT, HEX	
8	19	NTH0440BN8	NUT, HEX	
8	18	NTH0440BN6	NUT, HEX	
16	17	LWE10MRC	LOCKWASHER, EXTERNAL	
2	16	TM-105-B-AR	FANNING STRIP (LOOSE ITEM)	
16	15	LWE04MRC	LOCKWASHER, EXTERNAL	
4	14	BB-115	BEARING, OILITE (P/O A-1349)	
2	13	CA-345	CABLE ASSEMBLY	
2	12	TM-102-8	TERMINAL SWITCH, BARRIER TYPE	
8	11	SW-189	SWITCH, MICRO, PUSH	
4	10	PX-250	FREQUENCY TAB	
4	9	PX-249	GUARD, FREQ. TAB	
4	8	PM-427-1	PLUNGER, SWITCH	
1	7	NP-250	NAMEPLATE	
4	6	M5-987	BRACKET, SWITCH, RIGHT	
4	5	M5-986	BRACKET, SWITCH, LEFT	
-	4			
4	3	M5-154-1	STRADDLE PLATE	
4	2	JJ-322	CONNECTOR, RECEPTACLE	
1	1	A-1349-1	FRONT PANEL	

ITEM 13 INSTALLATION (COLOR CODE)

- 1 RED
- 2 WHITE/RED
- 3 WHITE/GREEN
- 4 GREEN
- 5 RED
- 6 WHITE/RED
- 7 WHITE/GREEN
- 8 GREEN



NOTE: ITEM 16 SUPPLIED AS LOOSE ITEM

A	ITEM 4 MS876 & ITEM 21 DELETED PICTORIAL UPDATED	4-4-84	22050	C.D.L.	
	Original Release for Production	3/10/65		ALA	
SYM	ZONE	DESCRIPTION	DATE	CH. NO.	DRAFTS CHECKER ENG. APP.
UNLESS OTHERWISE SPECIFIED:			SCALE		
DIMENSIONS ARE IN INCHES			MAXIMUM ALLOWABLE TOLERANCES HAVE BEEN DETERMINED AND ANY DEVIATIONS WILL BE CAUSE FOR REJECTION. REMOVE ALL BURRS & SHARP EDGES		
TOLERANCES ON FRACTIONS ± 1/64			DECIMALS ± .005		
			ANGLES ± 1/2°		

REQ. PER UNIT	MODEL	SECTION	ASSY. NO.	DATE
	QDP10C254			12-14-64
USED ON				

THE TECHNICAL MATERIEL CORP. MAMARONECK, NEW YORK			
ALUMINUM QUICK DISCONNECT PATCH PANEL ASSEMBLY (LT TO QDL)			
TYPE & TEMPER	HEAT TREAT. SPEC.	FINISH & SPEC. NO.	
TMC SMOOTH GRAY, SEMI-GLOSS ENAMEL			
DRAWN	CHECKED	FINAL APPROVAL	
		QDP-10C254	
ELEC. DES. APP.	MECH. DES. APP.	SHEET OF	

QDP-10C254 A