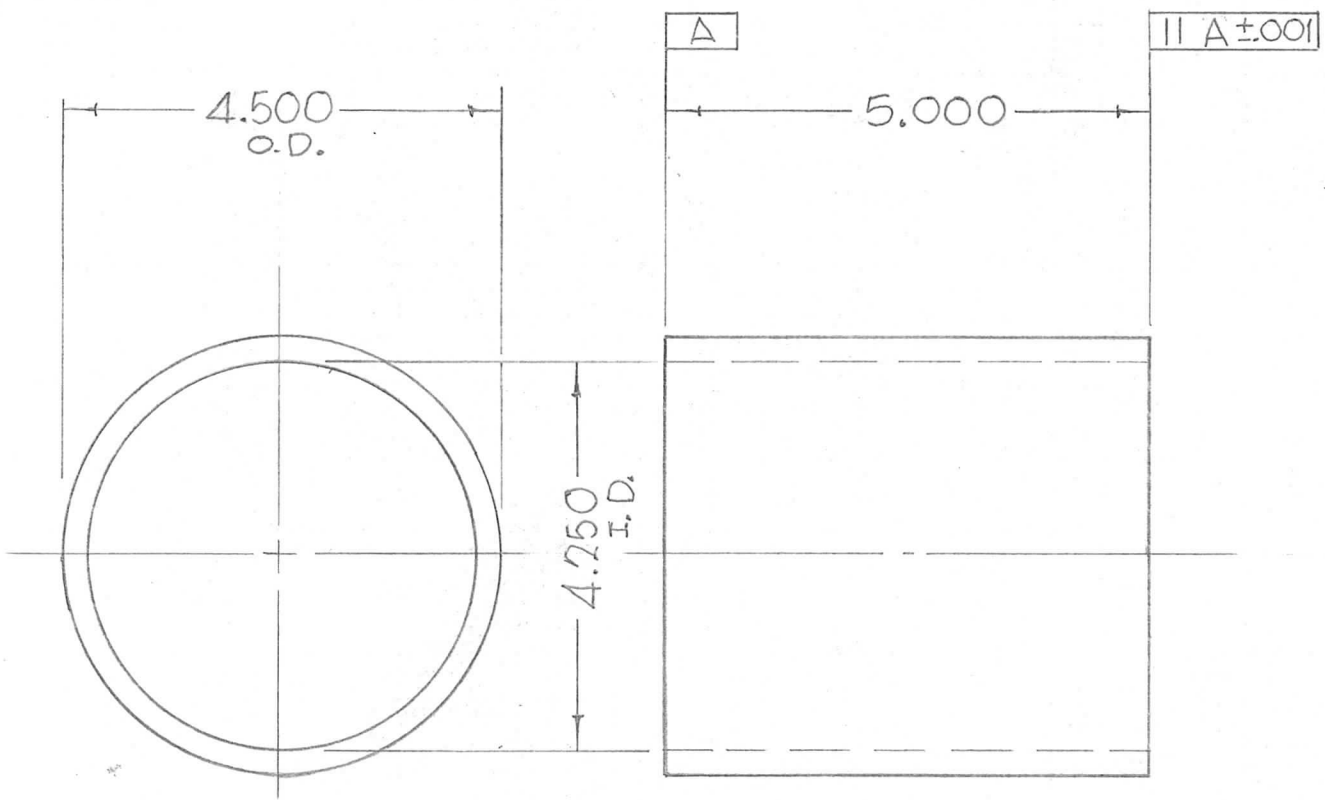


REQ. PER UNIT	USED ON			PX 900	Ø
	MODEL	ASS'Y. NO.	DATE		
2	GPT-10K (TECH)				



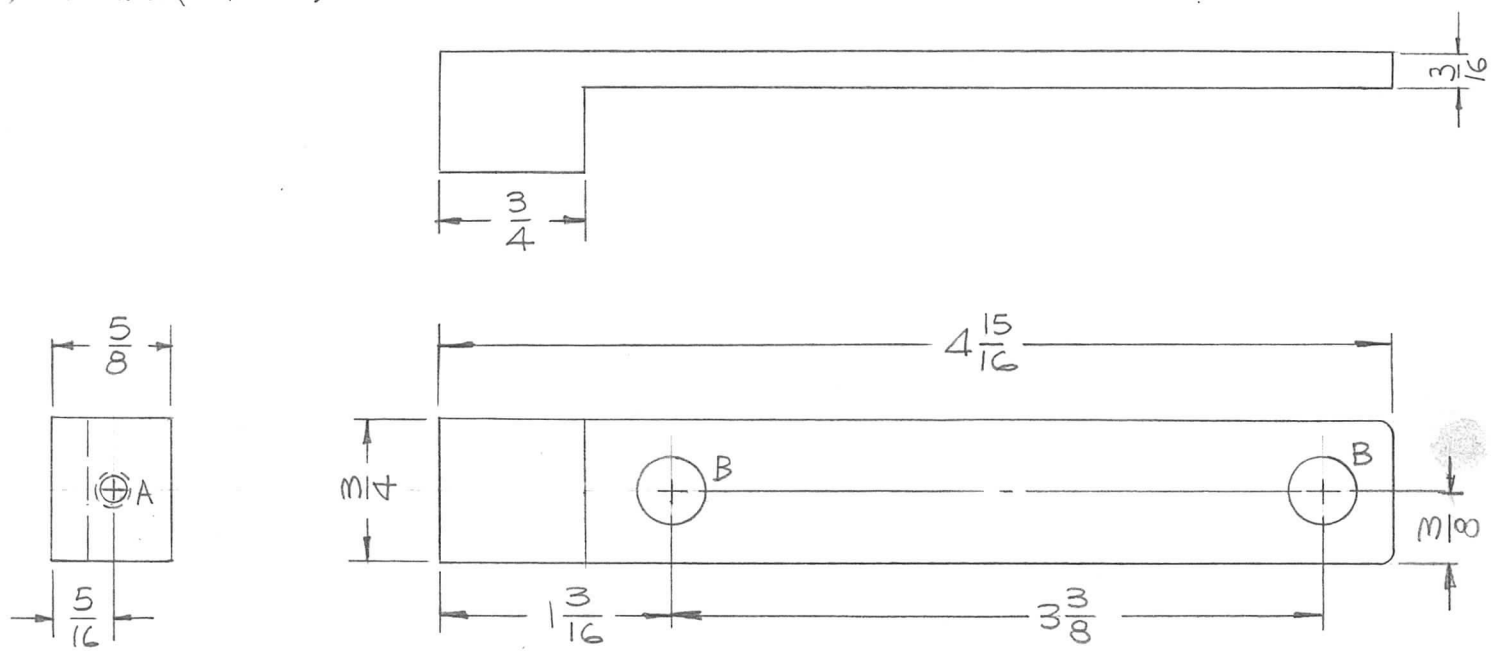
							REQ. ITEM	PART NO.	SK3129	DESCRIPTION PX 20	SYMBOL		
							AS NOTED		THE TECHNICAL MATERIEL CORP. MAMARONECK, NEW YORK				
							STOCK SIZE		TUBING, TRANSPARENT				
Ø	ORIGINAL RELEASE FOR PRODUCTION	5/16/67	Ø	CV		J.C. Biele	CAST ACRYLIC RESIN						
SYM	DESCRIPTION	DATE	CH. NO.	DRAFTS	CHECKER	ENG. APP.	MATERIAL						
UNLESS OTHERWISE SPECIFIED DIMENSIONS ARE IN INCHES AND INCLUDE CHEMICALLY APPLIED OR PLATED FINISHES						SCALE							
DECIMALS X ± .05 .XX ± .01 .XXX ± .005		FRACTIONS ± 1/64 ANGLES ± 0° 30'		CODE		TYPE & TEMPER		HEAT TREAT. SPEC.		DRAWN		CHECKED	FINAL APPROVAL
TOLERANCES						OUTSIDE SURFACE POLISHED				a.a			PX 900 Ø
						FINISH & SPEC. NO.		ELEC. DES. APP.		MECH. DES. APP.			

REQ. PER UNIT	USED ON			PX904	C
	MODEL	ASS'Y. NO.	DATE		
2	TLAA-2.5K		10-24-66		

HOLES:

A - DRILL & TAP FOR 10-32 X 1/2 DP. (1 REQ.)

B - 25/64 DIA. (2 REQ.)



REQ.	ITEM	PART NO.	F. BUDETTI DESCRIPTION				SYMBOL
		AS SHOWN	THE TECHNICAL MATERIEL CORP.				
		STOCK SIZE	MAMARONECK, NEW YORK				
C	"B" HOLES WERE 23/64	2.27.68 18790	HS.	FB	FB		
B	REDRAWN & REVISED	10-24-66 17123	HS.	FB	FB		
		SILICONE GLASS	SUPPORT, COIL				
		MATERIAL					
		G-7					
		TYPE & TEMPER	HEAT TREAT. SPEC.	DRAWN	CHECKED	FINAL APPROVAL	
		S113 FUNGUS PROOF,					
		FINISH & SPEC. NO.	ELEC. DES. APP.	MECH. DES. APP.	PX904	C	

UNLESS OTHERWISE SPECIFIED
DIMENSIONS ARE IN INCHES AND INCLUDE
CHEMICALLY APPLIED OR PLATED FINISHES

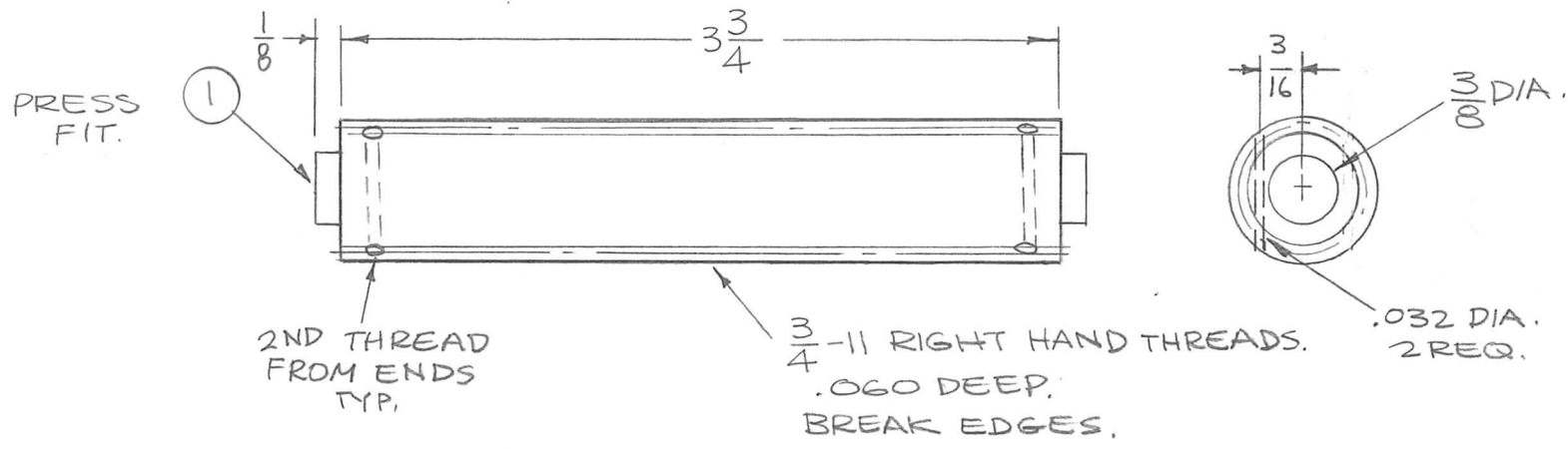
SCALE 1:1

DECIMALS .X ± .05 .XX ± .01 .XXX ± .005

FRACTIONS ± 1/64 ANGLES ± 0° 30'

TOLERANCES A

REQ. PER UNIT	USED ON			PX905	B
	MODEL	ASS'Y. NO.	DATE		
2	TLAA-2.5K		10-24-66		



							1	1	TE1032GR4.00R6	SPACER, THREADED		
							REQ. ITEM	PART NO.		F. BUDETTI	DESCRIPTION	SYMBOL
							3/4 DIA.		THE TECHNICAL MATERIEL CORP. MAMARONECK. NEW YORK			
							STOCK SIZE		SPACER, COIL			
							TEFLON					
							MATERIAL					
							TFE		<i>[Signature]</i>	<i>[Signature]</i>	<i>[Signature]</i>	
							TYPE & TEMPER	HEAT TREAT. SPEC.	DRAWN	CHECKED	FINAL APPROVAL	
							NATURAL			<i>[Signature]</i>	PX905	B
							FINISH & SPEC. NO.		ELEC. DES. APP.	MECH. DES. APP.		

UNLESS OTHERWISE SPECIFIED
DIMENSIONS ARE IN INCHES AND INCLUDE
CHEMICALLY APPLIED OR PLATED FINISHES

SCALE 1:1

DECIMALS
.X ± .05
.XX ± .01
.XXX ± .005

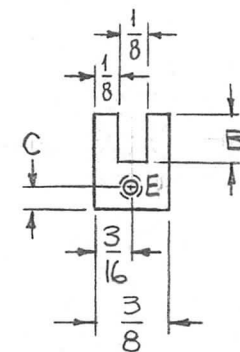
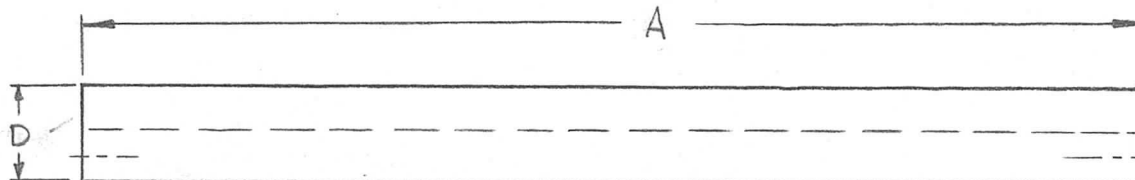
FRACTIONS
± 1/64
ANGLES
± 0° 30'

TOLERANCES

CODE
A

DATE 10-24-66
CH. NO. 17123
DRAFTS *[Signature]*
CHECKER *[Signature]*
ENG. APP. *[Signature]*

TMC P/N	A	B	C	D	E	REQ. PER UNIT	USED ON			
							MODEL	ASS'Y. NO.	DATE	
PX 906-1	5-1/2	1/8	3/16	9/16	ITEM-1	4	RFTA-1		12-10-64	PX906 ①
PX 906-2	3-3/4	1/8	3/16	1/2	ITEM-1	3	RFTA-1			
PX 906-3	6	1/8	3/16	9/16	ITEM-1	4	TLAA-2.5K			
PX 906-4	8	1/8	3/16	9/16	ITEM-1	4	ATSA-3			
PX 906-5	5	1/8	3/16	9/16	IT. 1	3	ATSA-3			

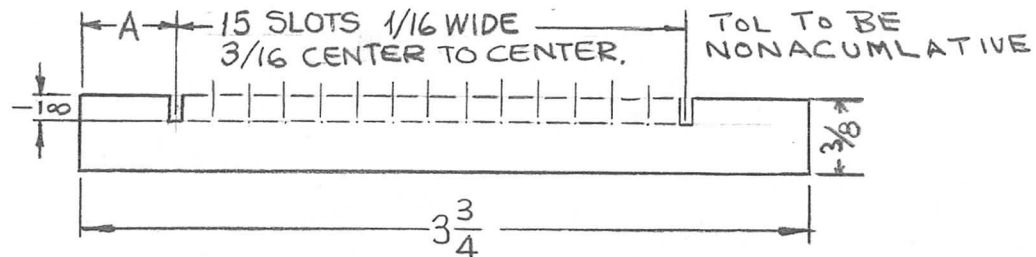


OPPOSITE SIDE IDENTICAL

①	ADD - 5	6-1-73	21082	GE	EP	EP					
C	-4, A WAS 8 1/4	5/11/73	21075	CS	CL	CL					
B	ADDED - 4	5/8/73	21071	CS	EP	EP	2	1	NT 139SC0620	INSERT, SCREW THREAD	E
A	MATERIAL WAS G11-MELAMINE	8-16-66	16762	RME			REQ. ITEM	PART NO.	F. BUDETTI	DESCRIPTION	SYMBOL
Ø	ORIGINAL RELEASE FOR PRODUCTION	6/14/66	Ø	C.V.			3/8 THICK		THE TECHNICAL MATERIEL CORP. MAMARONECK, NEW YORK		
X1	ON CHART PX 906-3 ADDED	6-9-66	X1	G.D.L.			STOCK SIZE				
X	EXP. RELEASE	12-10-64	X	SRG			EPOXY		SUPPORT, SPACER, TUNING COIL		
SYM	DESCRIPTION	DATE	CH. NO.	DRAFTS	CHECKER	ENG. APP.	MATERIAL				
UNLESS OTHERWISE SPECIFIED DIMENSIONS ARE IN INCHES AND INCLUDE CHEMICALLY APPLIED OR PLATED FINISHES		SCALE		1:1		G11		SRG	SRG	SRG	SRG
DECIMALS .X ± .05 .XX ± .01 .XXX ± .005		FRACTIONS ± 1/64 ANGLES ± 0° 30'		CODE A		TYPE & TEMPER		HEAT TREAT. SPEC.	DRAWN	CHECKED	FINAL APPROVAL
TOLERANCES						FINISH & SPEC. NO.		ELEC. DES. APP.	MECH. DES. APP.	PX906 ①	

TMC P/N	A	
PX	-1	1/2
PX	-2	9/16
PX	-3	5/8

REQ. PER UNIT	USED ON			PX907	∅
	MODEL	ASS'Y. NO.	DATE		
1 EA	RFTA-1		1-7-65		



SYM	DESCRIPTION	DATE	CH. NO.	DRAFTS	CHECKER	ENG. APP.	REQ. ITEM	PART NO.	DESCRIPTION	SYMBOL
∅	ORIGINAL RELEASE FOR PRODUCTION	9/13/66	∅	CV		<i>HO</i>		1/8 THICK	THE TECHNICAL MATERIEL CORP. MAMARONECK, NEW YORK	SPACER, COIL
X	EXP. RELEASE	1-7-65	X	SRG				STOCK SIZE		
								TEFLON		
								MATERIAL		
								TFE	SRG	<i>SRG</i>
								TYPE & TEMPER	CHECKED	<i>SRG</i>
								HEAT TREAT. SPEC.	FINAL APPROVAL	<i>SRG</i>
								FINISH & SPEC. NO.	ELEC. DES. APP.	<i>SRG</i>
									MECH. DES. APP.	PX907

UNLESS OTHERWISE SPECIFIED
DIMENSIONS ARE IN INCHES AND INCLUDE
CHEMICALLY APPLIED OR PLATED FINISHES

SCALE
1:1

DECIMALS
.X ± .05
.XX ± .01
.XXX ± .005

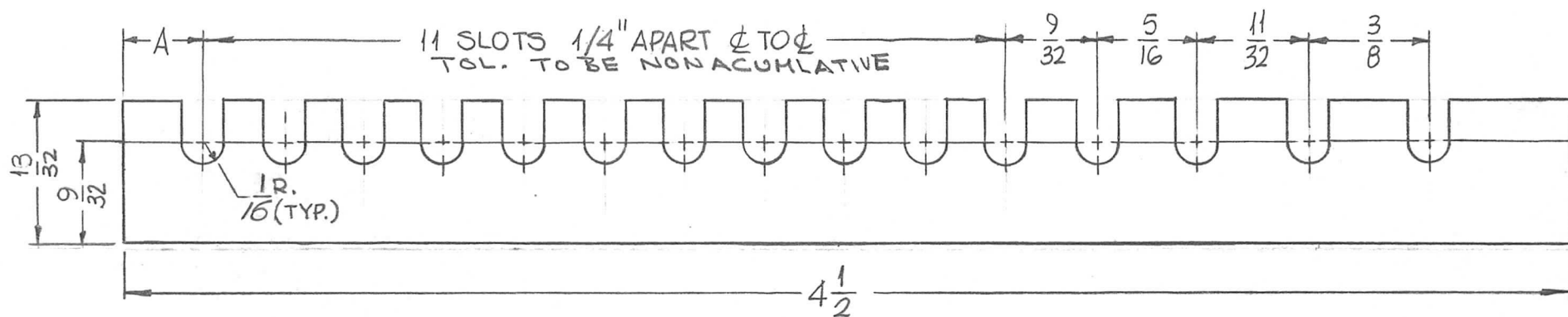
TOLERANCES

FRACTIONS
± 1/64
ANGLES
± 0° 30'

CODE
A

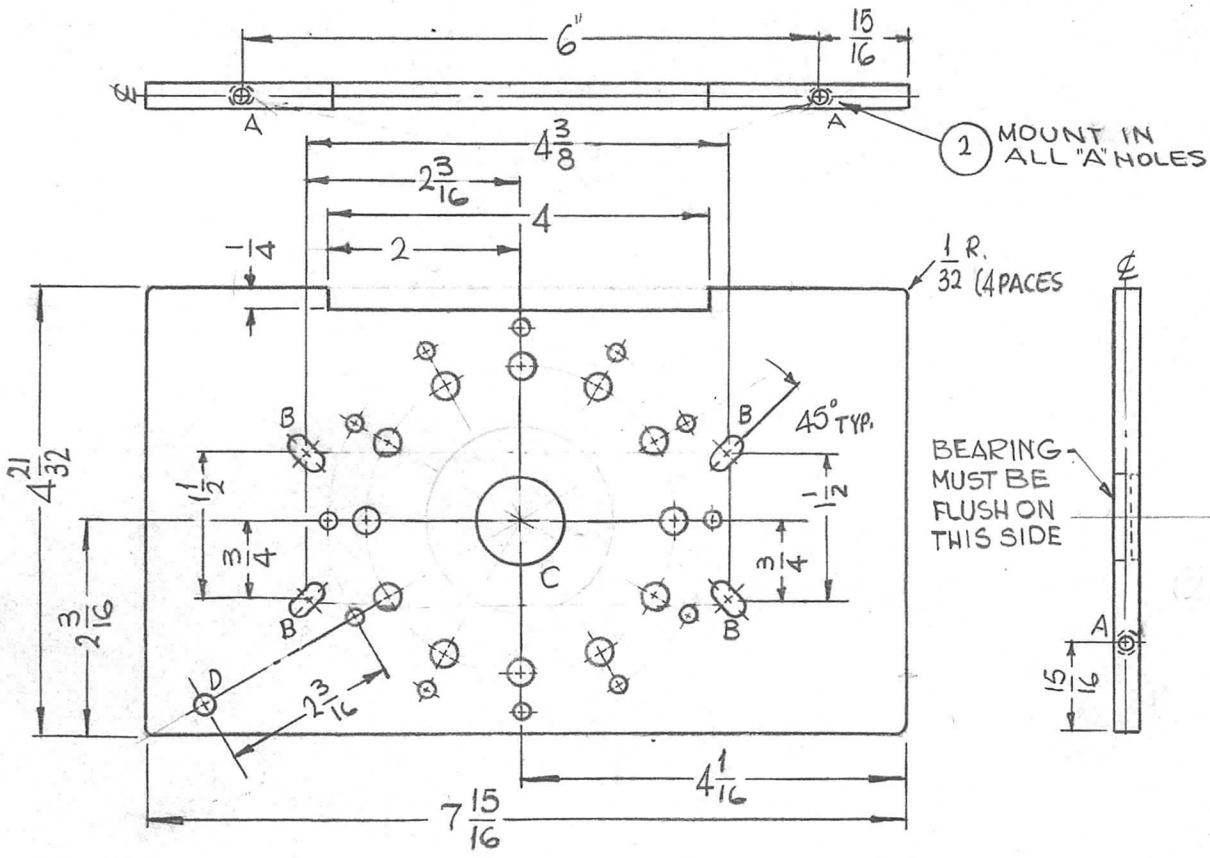
TMC P/N	A
PX908-1	1/4
PX908-2	5/16
PX908-3	3/8
PX908-4	7/16

REQ. PER UNIT	USED ON			PX908	A
	MODEL	ASS'Y. NO.	DATE		
1 EA.	RFTA-1		12-14-64		

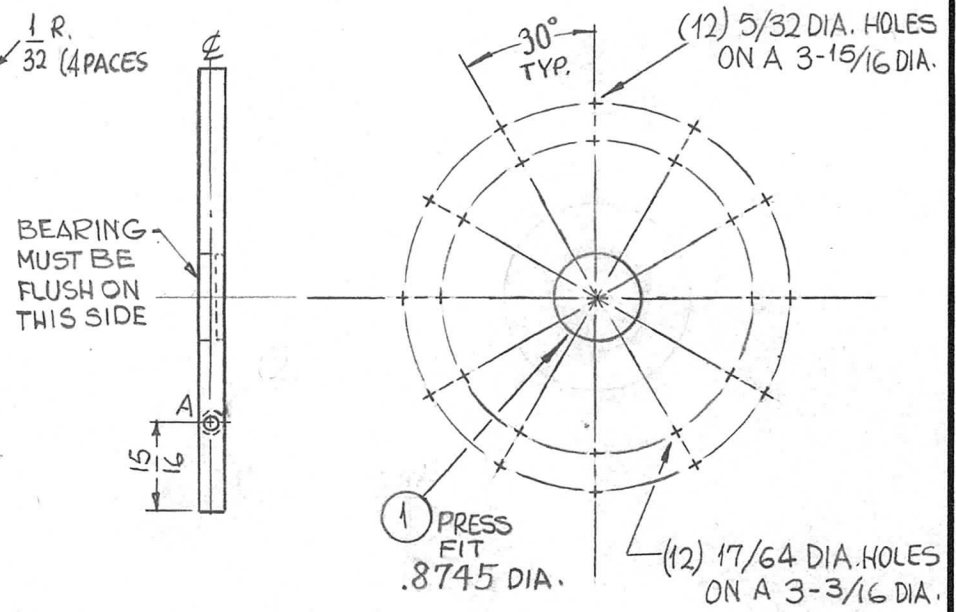


A	1/16 R WAS 1/8 R	1/3/69 19/77	K.H.	J.H.	FB	J.H.									
Ø	ORIGINAL RELEASE FOR PRODUCTION	6/13/66	Ø	CV		J.H.	REQ. ITEM	PART NO.	F. BUDETTI	DESCRIPTION	THE TECHNICAL MATERIEL CORP. MAMARONECK. NEW YORK		SYMBOL		
X2	CHANGE 1/8 THICK TO .125	6-18-65	X2	SRG	KA		.125 THICK		SPACER, TUNING COIL						
X1	13/32 WAS 15/32, 9/32 WAS 11/32	1-13-65	X1	SRG			STOCK SIZE								
X	EXP. RELEASE	12-14-64	X	SRG			TEFLON								
UNLESS OTHERWISE SPECIFIED DIMENSIONS ARE IN INCHES AND INCLUDE CHEMICALLY APPLIED OR PLATED FINISHES		SCALE	2:1			MATERIAL		T.F.E.		SRG		JCB		J.B. Miller	
DECIMALS .X ± .05 .XX ± .01 .XXX ± .005		FRACTIONS ± 1/64 ANGLES ± 0° 30'		CODE A		TYPE & TEMPER		HEAT TREAT. SPEC.		DRAWN aa		CHECKED JCB		FINAL APPROVAL PX908 A	
TOLERANCES		FINISH & SPEC. NO.		ELEC. DES. APP.		MECH. DES. APP.									

REQ. PER UNIT	USED ON			PX912	Ø
	MODEL	ASS'Y. NO.	DATE		
1	RFTA-1		12-10-64		



HOLES	DESCRIPTION	REQ.
A	8-32 HELI-COIL (2)	3
B	3/16 X 3/8 SLOTS	4
C	SEE DETAIL	1
D	13/64 DIA.	1



C-DETAIL

Ø	ORIGINAL RELEASE FOR PRODUCTION	6/13/66	Ø	CV		JL
X3	D HOLE ADDED	7-27-65	X3	SRG		
X2	BEARING NOTE ADDED	6-25-65	X2	G.D.L	DA	
X1	CUTOUT ADDED	3-22-65	X1	SRG		
X	EXP. RELEASE	12-10-64	X	SRG		
SYM	DESCRIPTION	DATE	CH. NO.	DRAFTS	CHECKER	ENG. APP.
UNLESS OTHERWISE SPECIFIED DIMENSIONS ARE IN INCHES AND INCLUDE CHEMICALLY APPLIED OR PLATED FINISHES		SCALE 1/2:1				
DECIMALS .X ± .05 .XX ± .01 .XXX ± .005	TOLERANCES	FRACTIONS ± 1/64 ANGLES ± 0° 30'	CODE A			

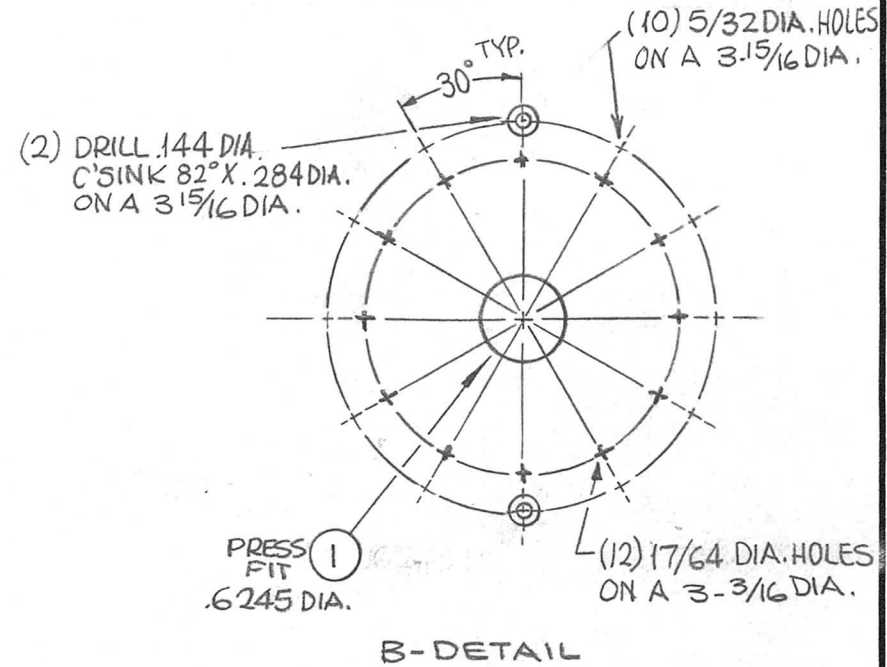
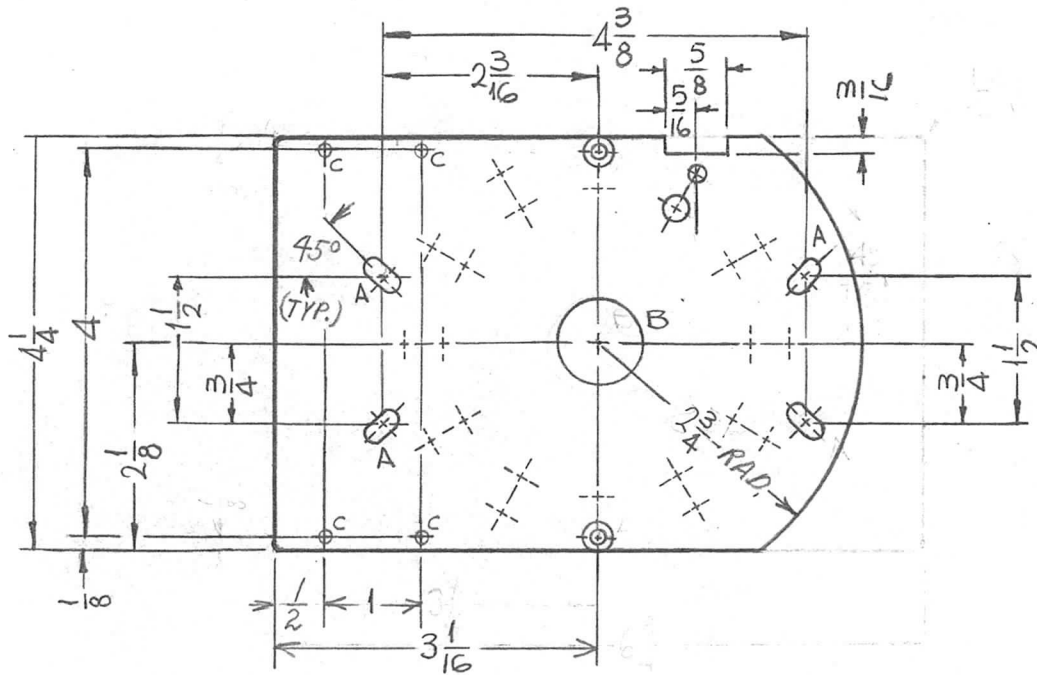
3	2	NT139SC0825	8-32 x 7/16 HELICOIL	A	
1	1	BB120-2	BEARING, RACE	C	
REQ. ITEM	PART NO.		F. BUDETTI	DESCRIPTION	SYMBOL
3/8 THICK			THE TECHNICAL MATERIEL CORP. MAMARONECK, NEW YORK		
STOCK SIZE			WAFER, SWITCH PI SECTION		
SUPRA-MICA			MATERIAL		
500			SRG	QC/B	DB
TYPE & TEMPER		HEAT TREAT. SPEC.	DRAWN	CHECKED	FINAL APPROVAL
NONE			aa	AK	PX912 Ø
FINISH & SPEC. NO.		ELEC. DES. APP.	MECH. DES. APP.		

PROTO TYPE DWG.
NOT FOR PROD.

REQ. PER UNIT	USED ON		
	MODEL	ASS'Y. NO.	DATE
1	RFTA-1		12-22-64

PX913 \emptyset

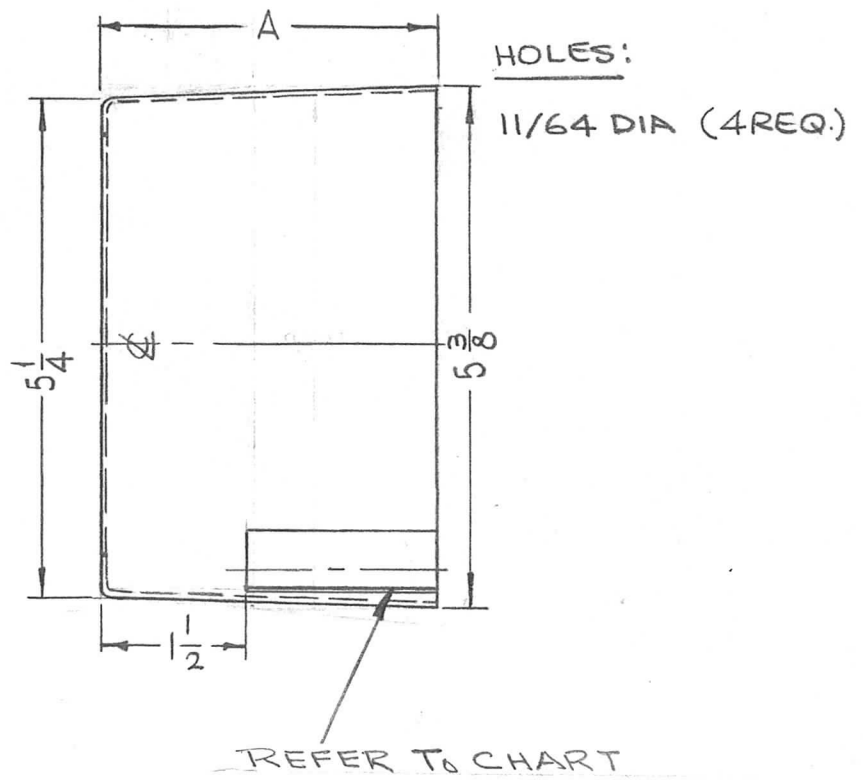
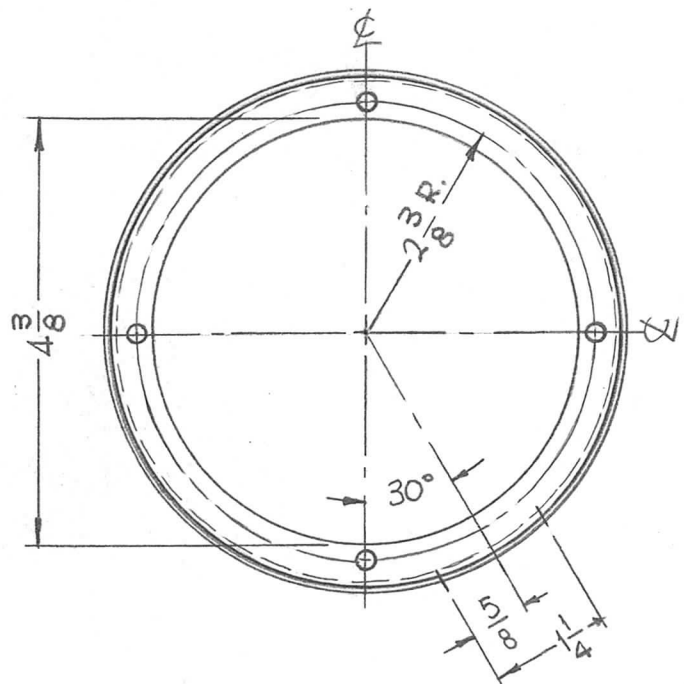
HOLES	DESCRIPTION	REQ.
A	3/16 X 3/8 SLOT	4
B	SEE DETAIL	1
C	1/8 DIA.	4



\emptyset	ORIGINAL RELEASE FOR PRODUCTION	9/13/66	\emptyset	CV		JHC	1	1	BB120-1	BEARING, RACE	B	
X ₂	CUTOUT ADDED	7-28-65	X ₂	SRG			1/4 THICK		THE TECHNICAL MATERIEL CORP. MAMARONECK, NEW YORK			
X ₁	C HOLES, 2 3/4 DIM & C'SINK HOLES ADDED	1-11-64	X ₁	SRG			STOCK SIZE		WAFER, SWITCH, L SECTION			
X	EXP. RELEASE	12-22-64	X	SRG			MELAMINE					
SYM	DESCRIPTION	DATE	CH. NO.	DRAFTS	CHECKER	ENG. APP.	MATERIAL					
UNLESS OTHERWISE SPECIFIED DIMENSIONS ARE IN INCHES AND INCLUDE CHEMICALLY APPLIED OR PLATED FINISHES		SCALE 1/2" = 1"					G11		SRG	JCB	OB	W. King
DECIMALS .X ± .05 .XX ± .01 .XXX ± .005		TOLERANCES		FRACTIONS ± 1/64 ANGLES ± 0° 30'		CODE A	TYPE & TEMPER		HEAT TREAT. SPEC.		DRAWN	
							NONE				SRG	
							FINISH & SPEC. NO.		ELEC. DES. APP.		MECH. DES. APP.	
											PX913 \emptyset	

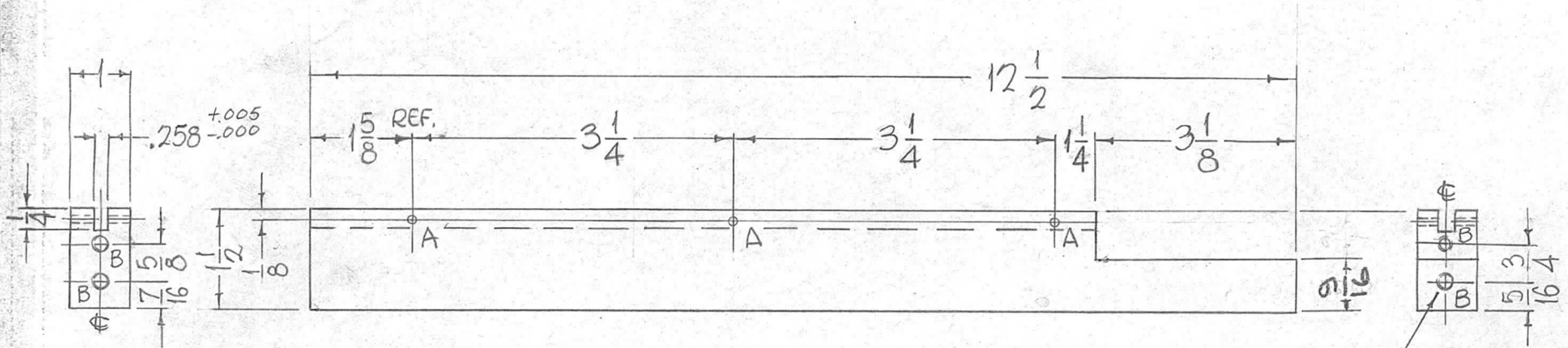
TMC P/N	A	CUTOUT
PX 915-1	1-9/16	NO
PX 915-2	3-1/2	YES

REQ. PER UNIT	USED ON			PX915	Ø
	MODEL	ASS'Y. NO.	DATE		
1	RFTA-1		1-28-65		



Ø	ORIGINAL RELEASE FOR PRODUCTION	9/13/66	Ø	CV		REQ. ITEM	PART NO.	F. BUDETTI	DESCRIPTION	SYMBOL	
X ₂	RE-INSTATED	6-22-65	X ₂	SRG		3 LAYERS			THE TECHNICAL MATERIEL CORP. MAMARONECK, NEW YORK BAFFLE, AIR		
X ₁	PX 915-2 ADDED	2-17-65	X ₁	SRG		STOCK SIZE					
X	EXP. RELEASE	1-28-65	X	SRG		FIBERGLASS					
SYM	DESCRIPTION	DATE	CH. NO.	DRAFTS	CHECKER	ENG. APP.	MATERIAL				
UNLESS OTHERWISE SPECIFIED DIMENSIONS ARE IN INCHES AND INCLUDE CHEMICALLY APPLIED OR PLATED FINISHES		SCALE				1/2:1		SRG	OCB	D.B. Althoff	
DECIMALS .X ± .05 .XX ± .01 .XXX ± .005		FRACTIONS ± 1/64 ANGLES ± 0° 30'		CODE A		TYPE & TEMPER		HEAT TREAT. SPEC.	DRAWN	CHECKED	FINAL APPROVAL
TOLERANCES						S115 SMOOTH GREY ENAM			OCB	OCB	PX 915
						FINISH & SPEC. NO.		ELEC. DES. APP.	MECH. DES. APP.		Ø

REQ. PER UNIT	USED ON			PX917	Ø
	MODEL	ASS'Y. NO.	DATE		
3	TSTE10K		7-20-65		



HOLES

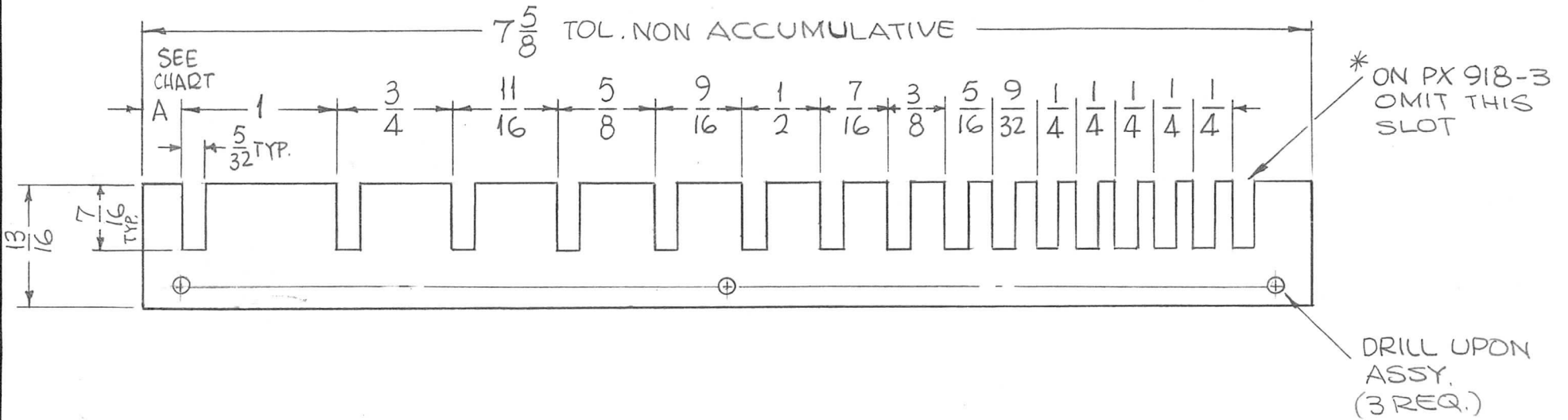
- REQ: 3
- A- NO. 30 (.128) DIA. THRU
 - B- 1- #5 (.203) DRILL, TO .625 DEEP.
 2- 120° C'SK TO .24-.27 DIA.
 3- TAP .420 MIN. DEPTH USE HELI-COIL TAP NO. 3CPB.
 4- MOUNT ITEM #1, 3/4 TO 1-1/2 PITCH BELOW SURFACE.
 5- BREAK OFF DRIVING TANG.

① MOUNT IN ALL B HOLES.

							4	1	NT139-SC1-20	INSERT, SCREW, THREADED	B	
							REQ. ITEM	PART NO.		F. BUDETTI	DESCRIPTION	SYMBOL
							STOCK SIZE		THE TECHNICAL MATERIEL CORP. MAMARONECK, NEW YORK			
							MATERIAL		EPOXY			
							MATERIAL		LEG, BANDSWITCH MTG.			
Ø	ORIGINAL RELEASE FOR PRODUCTION	5/16/67	Ø	CV	JDE		G11		DRAWN			
SYM	DESCRIPTION	DATE	CH. NO.	DRAFTS	CHECKER	ENG. APP.	TYPE & TEMPER		HEAT TREAT. SPEC.		CHECKED	FINAL APPROVAL
UNLESS OTHERWISE SPECIFIED DIMENSIONS ARE IN INCHES AND INCLUDE CHEMICALLY APPLIED OR PLATED FINISHES		SCALE					NATURAL		DRAWN		O.B. Miller	
DECIMALS .X ± .05 .XX ± .01 .XXX ± .005		FRACTIONS ± 1/64 ANGLES ± 0° 30'		TOLERANCES		CODE A	FINISH & SPEC. NO.		ELEC. DES. APP.		MECH. DES. APP.	
									aa.		PX917	
											Ø	

TMC P/N	A
PX 918-1	1/4
PX 918-2	15/32
PX 918-3	11/16 *

REQ. PER UNIT	USED ON			PX 918	Ø
	MODEL	ASS'Y. NO.	DATE		
1 EA	TSTE-10K		6-28-65		



SYM	DESCRIPTION	DATE	CH. NO.	DRAFTS	CHECKER	ENG. APP.	REQ. ITEM	PART NO.	F. BUDETTI DESCRIPTION	SYMBOL	
Ø	ORIGINAL RELEASE FOR PRODUCTION	7-12-66	Ø	HLA			1/4 THICK		THE TECHNICAL MATERIEL CORP. MAMARONECK, NEW YORK	Ø	
X1	7/16 WAS 3/8, 13/16 WAS 7/8	6-28-65	X1	HLA	HLA		STOCK SIZE				
							TEFLON		SPACER, INSULATED, COIL MTG.		
							MATERIAL		(BANDSWITCH)		
							CURED	—			
							TYPE & TEMPER	HEAT TREAT. SPEC.	DRAWN	CHECKED	FINAL APPROVAL
							NATURAL		HLA 7-11-66	HLA	PX 918
							FINISH & SPEC. NO.		ELEC. DES. APP.	MECH. DES. APP.	Ø

UNLESS OTHERWISE SPECIFIED
DIMENSIONS ARE IN INCHES AND INCLUDE
CHEMICALLY APPLIED OR PLATED FINISHES

SCALE 1:1

DECIMALS .X ± .05 .XX ± .01 .XXX ± .005

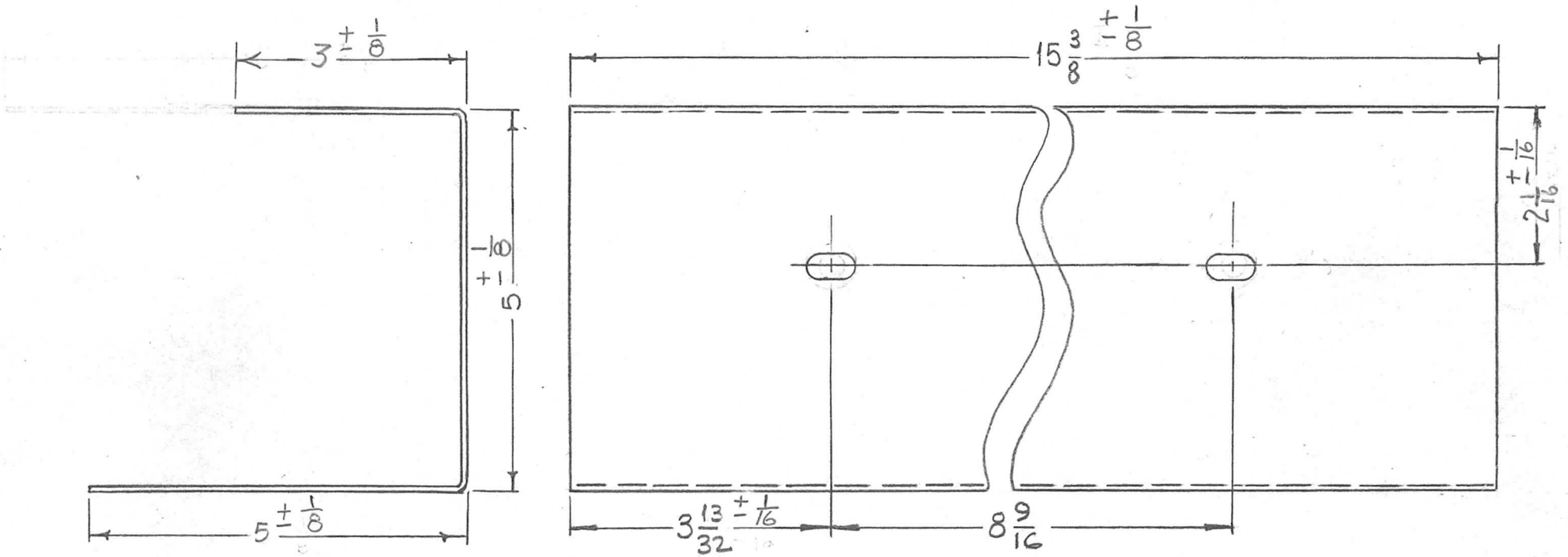
FRACTIONS ± 1/64 ANGLES ± 0° 30'

TOLERANCES

CODE A

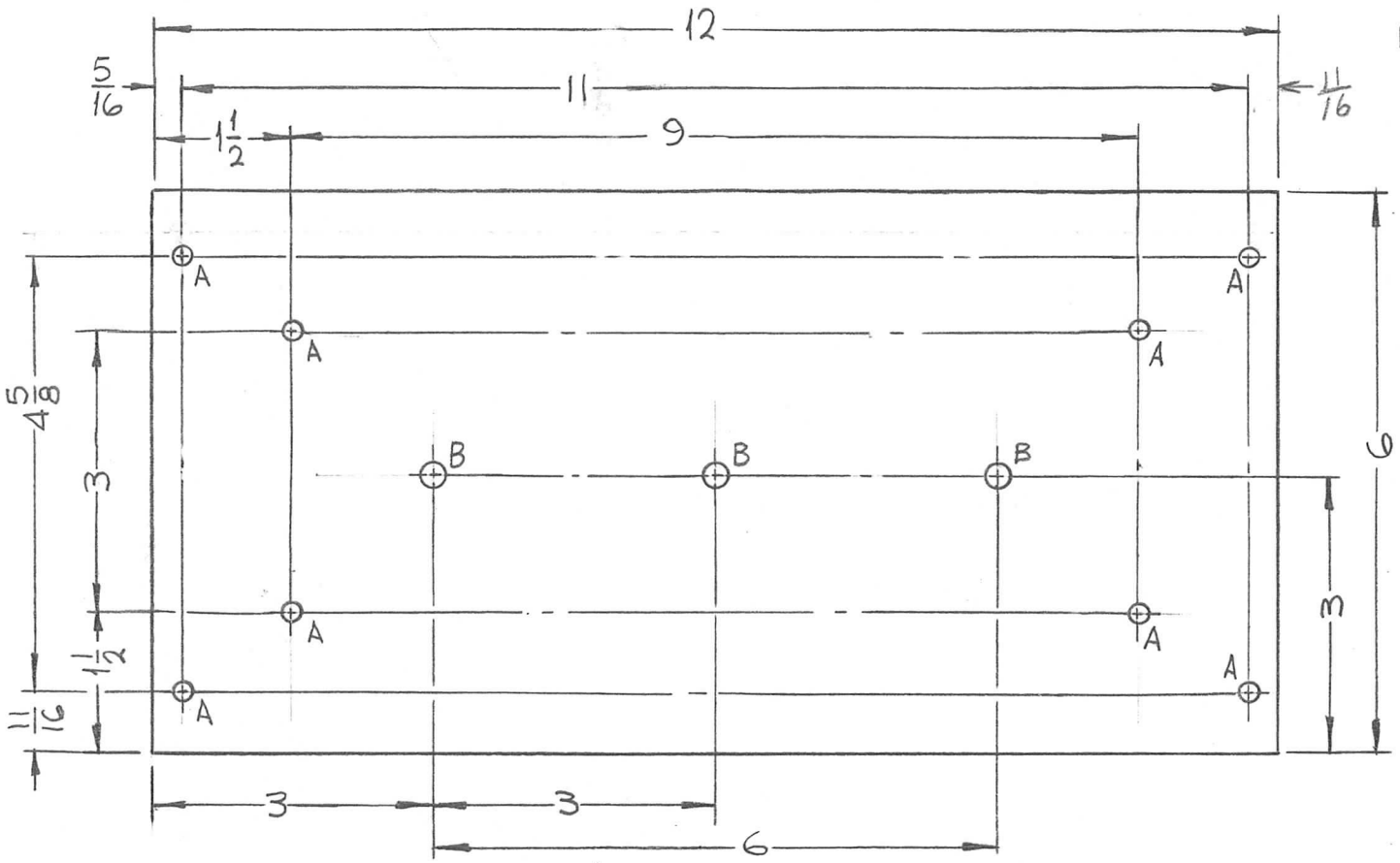
REQ. PER UNIT	USED ON			PX 919	B
	MODEL	ASS'Y. NO.	DATE		
2	GPT-200K		2-23-65		

HOLES -
5/16 X 5/8 SLOT (2 REQ.)



B	TOL ADDED, MAT WAS KYDEX 100, GRAY 52001	8/25/67	18474	H.G.	FB	FB											
A	3 DIM WAS 6 5/16 X 5/8 SLOT WAS 5/16	11/28/66	17305	WHD	PCB	PCB					REF: LD1799						
Ø	ORIGINAL RELEASE	10/28/65			file												
X2	MATERIAL WAS 3 LAYERS, FIBERGLAS	10/28/65	X2	file													
X1	HOLES ADDED, 15 3/8 WAS 15	6-2-65	X1	SRG													
X	EXP. RELEASE	2-22-65	X	SRG													
SYM	DESCRIPTION	DATE	CH. NO.	DRAFTS	CHECKER	ENG. APP.	MATERIAL										
UNLESS OTHERWISE SPECIFIED DIMENSIONS ARE IN INCHES AND INCLUDE CHEMICALLY APPLIED OR PLATED FINISHES		SCALE					1/2:1										
DECIMALS .X ± .05 .XX ± .01 .XXX ± .005		FRACTIONS ± 1/64 ANGLES ± 0° 30'		TOLERANCES		CODE		TYPE & TEMPER		HEAT TREAT. SPEC.		DRAWN		CHECKED		FINAL APPROVAL	
		A										SRG		10/28/65		10/29/65	
																PX 919 B	

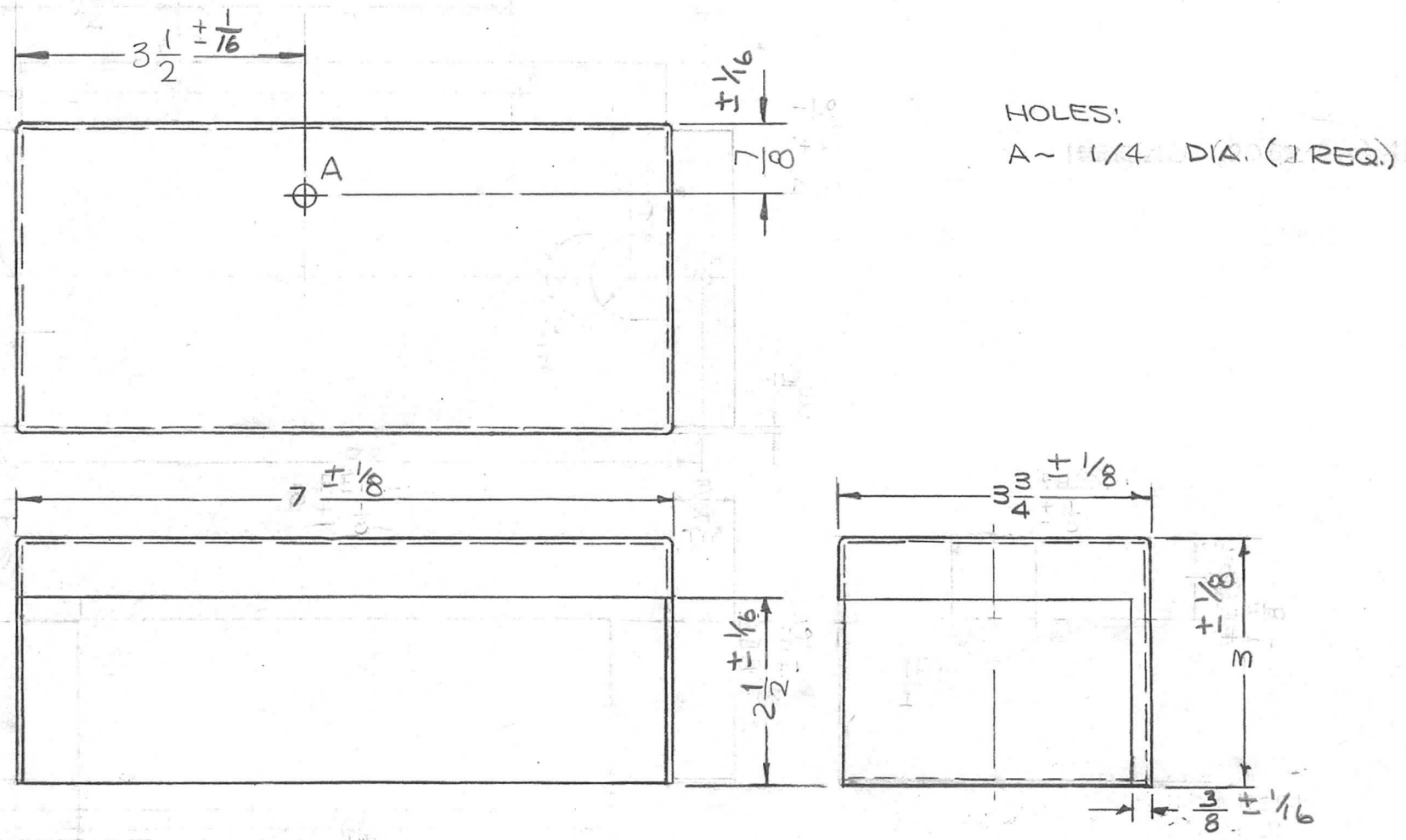
REQ. PER UNIT	USED ON			PX920	Ø
	MODEL	ASS'Y. NO.	DATE		
2	GPT-200K		2-24-65		



HOLES:
 A ~ 15/64 DIA (8 REQ.)
 B ~ 1/4 DIA. 3 REQ.

REQ.	ITEM	PART NO.	F. BUDETTI DESCRIPTION				SYMBOL
		1/2 THICK	THE TECHNICAL MATERIEL CORP.				
		STOCK SIZE	MAMARONECK, NEW YORK				
Ø	ORIG. PROD. RELEASE	10/28/65	Ø	file	XXX PHENOLIC		BOARD, TERMINAL
X	EXP. RELEASE	2-24-65	X	SRG	MATERIAL		
SYM	DESCRIPTION	DATE	CH. NO.	DRAFTS	CHECKER	ENG. APP.	
UNLESS OTHERWISE SPECIFIED DIMENSIONS ARE IN INCHES AND INCLUDE CHEMICALLY APPLIED OR PLATED FINISHES		SCALE		1/2:1			
DECIMALS	TOLERANCES	FRACTIONS	CODE				
.X ± .05 .XX ± .01 .XXX ± .005		± 1/64 ANGLES ± 0° 30'	A				
		TYPE & TEMPER		HEAT TREAT. SPEC.		DRAWN	CHECKED
		FINISH & SPEC. NO.		ELEC. DES. APP.		MECH. DES. APP.	
				SRG file		10/29/65	
				Ø		PX920 Ø	

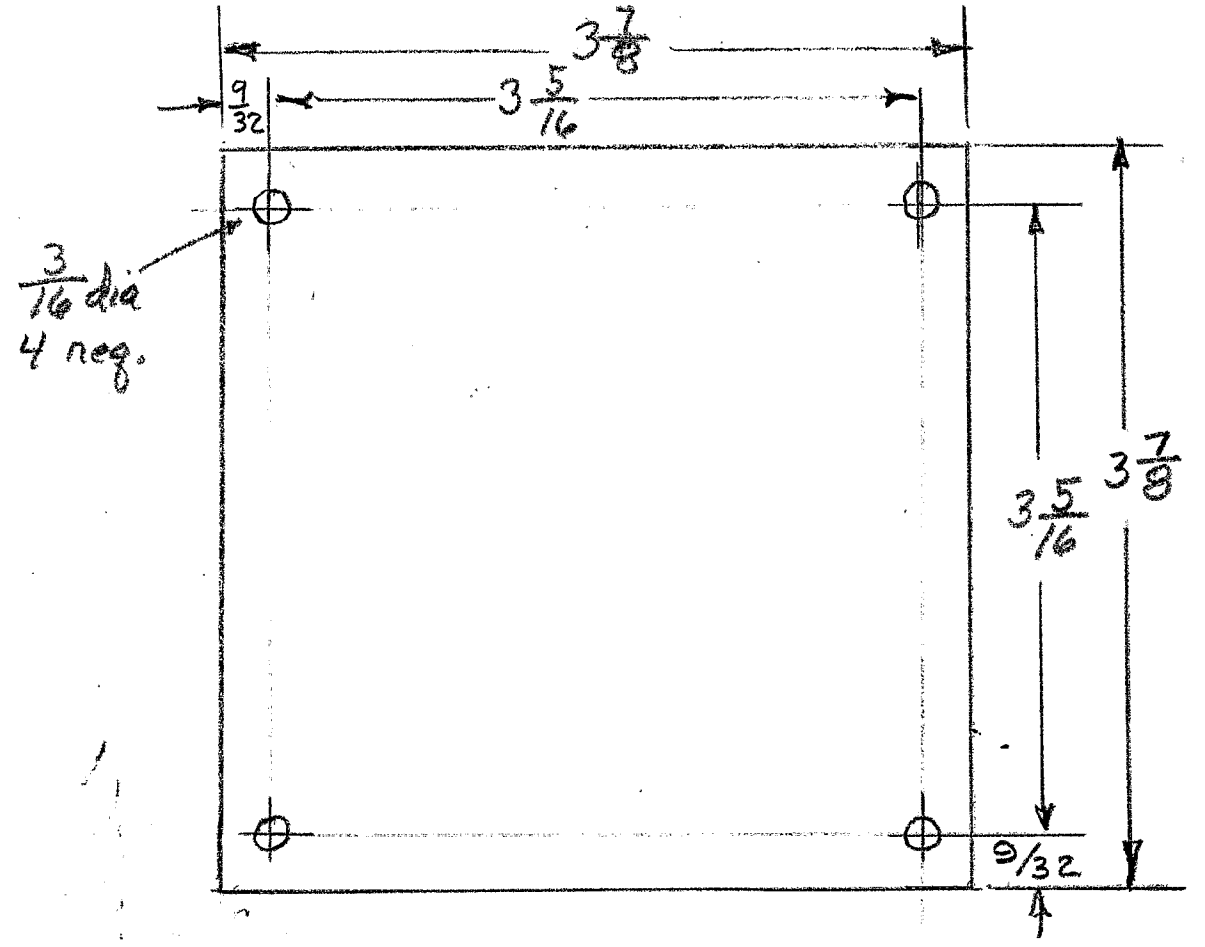
REQ. PER UNIT	USED ON			PX921	B
	MODEL	ASS'Y. NO.	DATE		
2	GPT-200K		2-23-65		



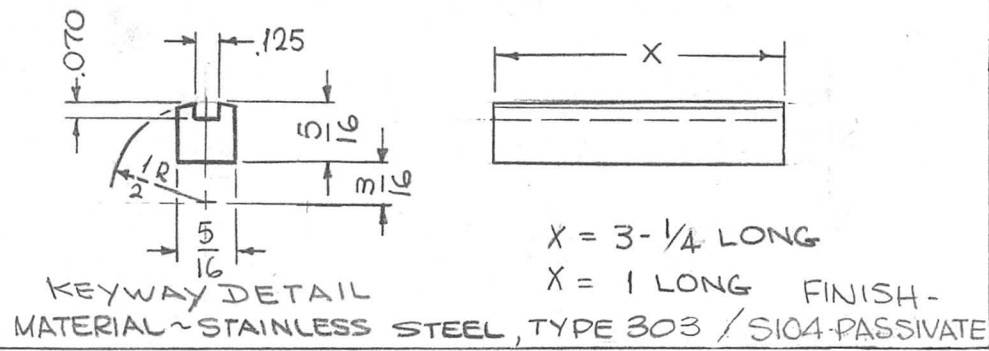
B	TOL'S ADDED	8/21/67	18474	H.G.	<i>[Signature]</i>	FB	REF: LD1797					
A	COMPLETELY REVISED	11/28/66	17301	WU	<i>[Signature]</i>	<i>[Signature]</i>	REQ. ITEM	PART NO.	F. BUDETTI	DESCRIPTION	SYMBOL	
Ø	ORIGINAL RELEASE FOR PRODUCTION	4/20/65	AA	SRG			3 LAYERS		THE TECHNICAL MATERIEL CORP. MAMARONECK, NEW YORK			
X1	COMPLETELY REVISED <small>2-1/4 DIA. WAS 2-3/8</small>	4/12/65		QJL			STOCK SIZE		SHIELD, RESISTORS			
X	EXP. RELEASE	2-23-65	X	SRG			FIBERGLASS					
SYM	DESCRIPTION	DATE	CH. NO.	DRAFTS	CHECKER	ENG. APP.	MATERIAL					
UNLESS OTHERWISE SPECIFIED DIMENSIONS ARE IN INCHES AND INCLUDE CHEMICALLY APPLIED OR PLATED FINISHES		SCALE		DO NOT SCALE						SRG	<i>[Signature]</i>	<i>[Signature]</i>
DECIMALS .X ± .05 .XX ± .01 .XXX ± .005		FRACTIONS ± 1/64 ANGLES ± 0° 30'		TOLERANCES		CODE	TYPE & TEMPER		HEAT TREAT. SPEC.	DRAWN	CHECKED	FINAL APPROVAL
				A			S115 SMOOTH GREY ENAM.			<i>[Signature]</i>	<i>[Signature]</i>	PX921
							FINISH & SPEC. NO.		ELEC. DES. APP.	MECH. DES. APP.		B

E-5181

REQ. PER UNIT	USED ON		PX 926	Ø
	MODEL	ASSY. NO.		
	AZ104	Loose Item		

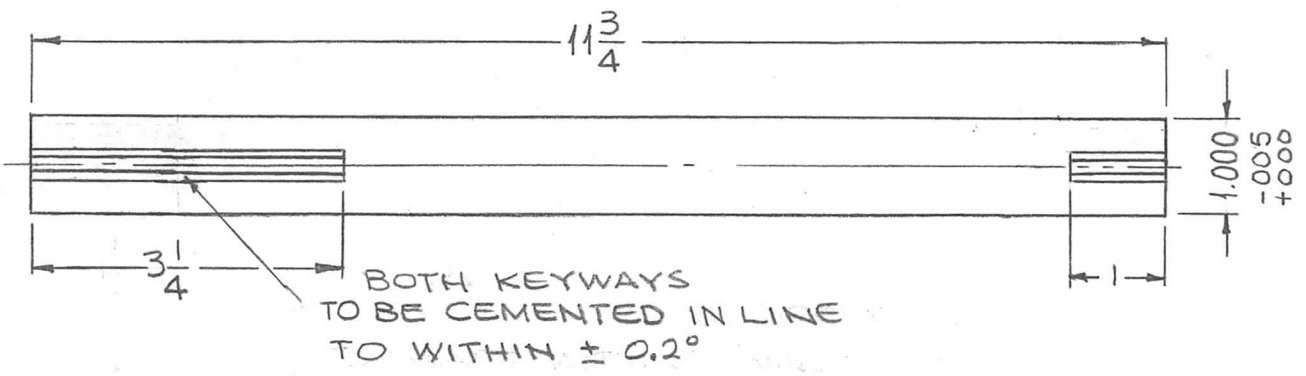


							REQ. ITEM	PART NO.	HAY		DESCRIPTION	SYMBOL
							1/16		THE TECHNICAL MATERIEL CORP.			
							STOCK SIZE		MAMARONECK, NEW YORK			
Ø ORIGINAL RELEASE FOR 4-27-65							CJL		COVER, CIRCUIT BOARD			
ISSUE ITEM							MATERIAL					
CHANGED FROM							Phenolic					
DATE							XXXXP		RH		FINAL APPROVAL	
CH. NO.							TYPE & TEMPER		DRAWN		CHECKED	
DRAFTS							NATURAL				PX 926 Ø	
CHECKER							FINISH & SPEC. NO.		ELEC. DES. APP.		MECH. DES. APP.	
ENG. APP.												
TOLERANCES							SCALE: +					
DEC. DIM. ±							MAXIMUM ALLOWABLE TOLERANCES HAVE BEEN DETERMINED AND ANY DEVIATIONS WILL BE CAUSE FOR REJECTION.					
FRAC. DIM. ±							REMOVE ALL BURRS AND SHARP EDGES					
ANGULAR DIM. ±												



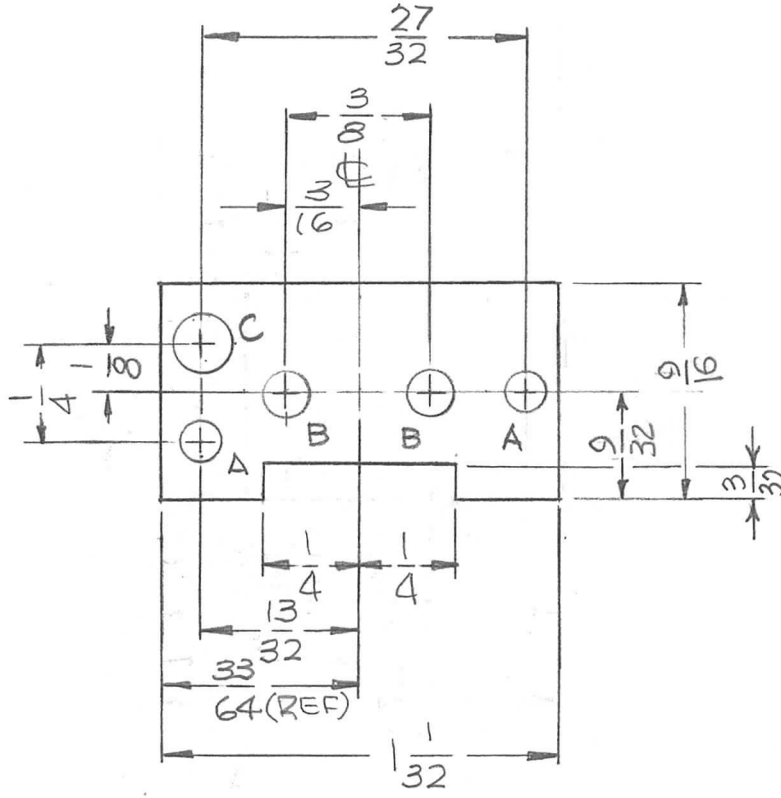
REQ. PER UNIT	USED ON			PX927	Ø
	MODEL	ASS'Y. NO.	DATE		
1	TSTL 110K		3-3-65		

X = 3-1/4 LONG
X = 1 LONG FINISH-



REQ.	ITEM	PART NO.	F. BUDETTI DESCRIPTION			SYMBOL
Ø		SEE DWG	THE TECHNICAL MATERIEL CORP. MAMARONECK, NEW YORK			
X1	3 1/4 WAS 1 1/2, KEYWAY WAS WITHIN 15 MIN	6-5-65				
X	EXP. RELEASE	3-3-65	X	SRG		
SYM	DESCRIPTION	DATE	CH. NO.	DRAFTS	CHECKER	ENG. APP.
UNLESS OTHERWISE SPECIFIED DIMENSIONS ARE IN INCHES AND INCLUDE CHEMICALLY APPLIED OR PLATED FINISHES		SCALE	1/2:1			
DECIMALS .X ± .05 .XX ± .01 .XXX ± .005	TOLERANCES	FRACTIONS ± 1/64 ANGLES ± 0° 30'	CODE A			
		SUPERAMICA 500	MATERIAL		SRG	
		TYPE & TEMPER	HEAT TREAT. SPEC.	DRAWN	CHECKED	FINAL APPROVAL
		FINISH & SPEC. NO.		ELEC. DES. APP.	MECH. DES. APP.	PX927 Ø

REQ. PER UNIT	USED ON			PX 930	A
	MODEL	ASS'Y. NO.	DATE		
1	SBE-2A	A4230	4-12-65		



HOLE	DESCRIPTION	REQ.
A	7/64	2
B	1/8	2
C	5/32	1

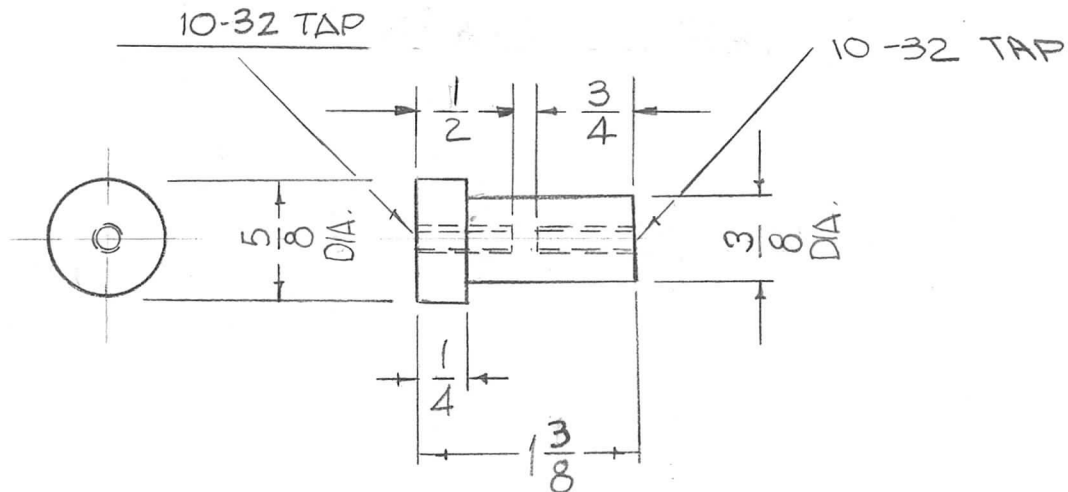
REQ.	ITEM	PART NO.	DESCRIPTION				SYMBOL
		1/16 THK STOCK SIZE	THE TECHNICAL MATERIEL CORP. MAMARONECK, NEW YORK				
		PHENOLIC	BOARD INSULATOR				
		MATERIAL					
		XXX P LAMINATE	G.D.L.	JCB	G.D.L.		
		TYPE & TEMPER	HEAT TREAT. SPEC.	DRAWN.	CHECKED	FINAL APPROVAL	
		NATURAL				PX930 A	
		FINISH & SPEC. NO.	ELEC. DES. APP.	MECH. DES. APP.			

UNLESS OTHERWISE SPECIFIED DIMENSIONS ARE IN INCHES AND INCLUDE CHEMICALLY APPLIED OR PLATED FINISHES	SCALE 2:1	CODE A
---	--------------	-----------

DECIMALS .X ± .05 .XX ± .01 .XXX ± .005	TOLERANCES	FRACTIONS ± 1/64 ANGLES ± 0° 30'
--	------------	---

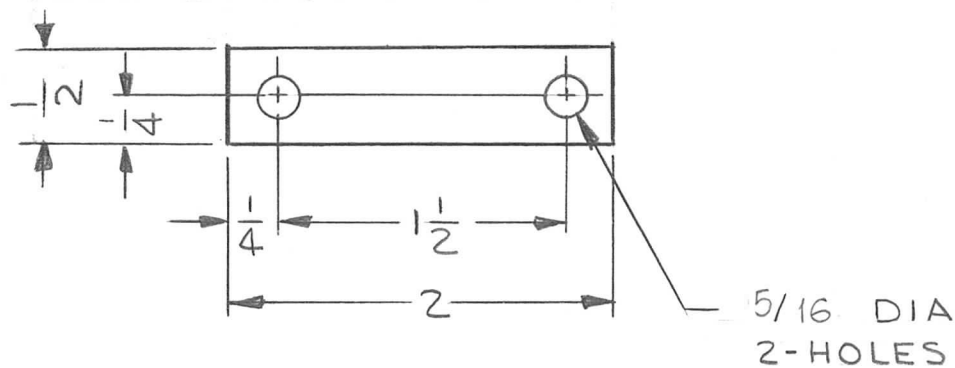
SYM	DESCRIPTION	DATE	CH. NO.	DRAFTS	CHECKER	ENG. APP.
A	1/2 x 3/32 CUTOUT ADD	12.22.66	17554	Wby	G.D.L.	
Ø	ORIGINAL RELEASE	4-15-65				

REQ. PER UNIT	USED ON			PX931 B
	MODEL	ASS'Y. NO.	DATE	
2	KIT 232A	A4235	4-19-65	



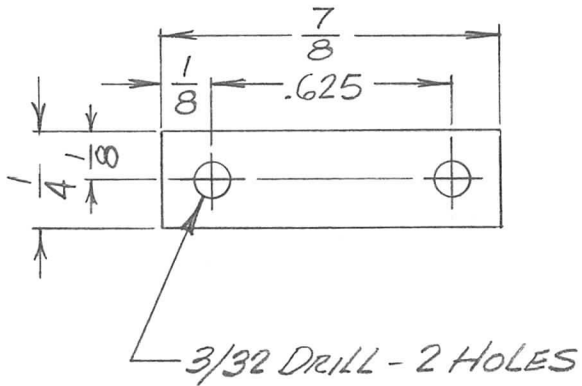
REQ. ITEM	PART NO.	DESCRIPTION	SYMBOL
B	3/8 DIA. WAS 7/16 DIA	3-30-67 18069 L.A.K. <i>QC/B</i>	THE TECHNICAL MATERIEL CORP. MAMARONECK. NEW YORK STANDOFF, RESISTOR MTG.
A	10-32 X 3/4 DEEP WAS 10-32 X 1/2 DEEP	5/26/65 14102 <i>R</i> <i>QC/B</i>	
Ø	ORIGINAL RELEASE FOR PRODUCTION	4/19/65 <i>M</i>	
SYM	DESCRIPTION	DATE CH. NO. DRAFTS CHECKER ENG. APP.	
UNLESS OTHERWISE SPECIFIED DIMENSIONS ARE IN INCHES AND INCLUDE CHEMICALLY APPLIED OR PLATED FINISHES		SCALE <i>H</i>	XXXP TYPE & TEMPER HEAT TREAT. SPEC.
DECIMALS .X ± .05 .XX ± .01 .XXX ± .005	TOLERANCES	FRACTIONS ± 1/64 ANGLES ± 0° 30'	SRE DRAWN CHECKED FINAL APPROVAL ELEC. DES. APP. MECH. DES. APP.
		CODE	NATURAL S113 FUNGUS PROOF FINISH & SPEC. NO.
			PX931 B

REQ. PER UNIT	USED ON			PX 932 A
	MODEL	ASS'Y. NO.	DATE	
1	GPT-10K	A4236	4-19-65	



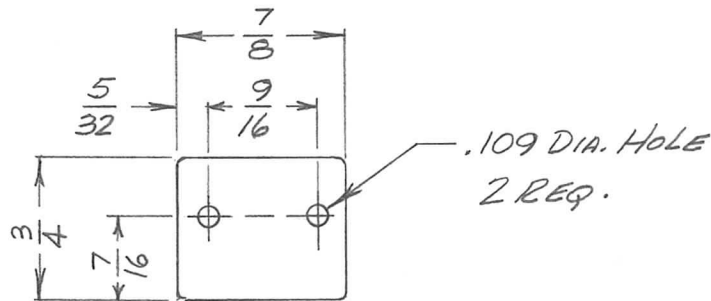
SYM	DESCRIPTION	DATE	CH. NO.	DRAFTS	CHECKER	ENG. APP.	REQ. ITEM	PART NO.	BUDETTI	DESCRIPTION	SYMBOL	
A	1/2 DIM WAS 3/4	10/14/65	14988	F.V.V.	AA	J.C.	1/16 THK STOCK SIZE		THE TECHNICAL MATERIEL CORP. MAMARONECK. NEW YORK			
Ø	ORIGINAL RELEASE FOR PRODUCTION	4/20/65	AA	J.L.			PHENOLIC		TERMINAL BOARD			
							MATERIAL					
	UNLESS OTHERWISE SPECIFIED DIMENSIONS ARE IN INCHES AND INCLUDE CHEMICALLY APPLIED OR PLATED FINISHES	SCALE 1/1						XXXXP	J.L. 4/15/65	J.C.B.	1/1/65 4/20/65	
	DECIMALS .X ± .05 .XX ± .01 .XXX ± .005	TOLERANCES	FRACTIONS ± 1/64 ANGLES ± 0° 30'	CODE			TYPE & TEMPER	HEAT TREAT. SPEC.	DRAWN	CHECKED	FINAL APPROVAL	
							NATURAL S113 FUNGUS PROOF		J.R.D. 4-20-65	4/20/65	PX 932 A	
							FINISH & SPEC. NO.	ELEC. DES. APP.	MECH. DES. APP.			

REQ. PER UNIT	USED ON			PX933	Ø
	MODEL	ASS'Y. NO.	DATE		
1	LRCC-1	AX567	4.22.65		
1	LRCM-1	AX568	4.22.65		



REQ.	ITEM	PART NO.	ZETENA	DESCRIPTION	SYMBOL
		.060	THE TECHNICAL MATERIEL CORP. MAMARONECK, NEW YORK		
		STOCK SIZE	STRIP, MARKING		
Ø	ORIG. RELEASE FOR PRODUCTION	4.22.65	M	HCA	
SYM	DESCRIPTION	DATE	CH. NO.	DRAFTS	CHECKER
UNLESS OTHERWISE SPECIFIED DIMENSIONS ARE IN INCHES AND INCLUDE CHEMICALLY APPLIED OR PLATED FINISHES		SCALE	2:1		
DECIMALS .X ± .05 .XX ± .01 .XXX ± .005	TOLERANCES	FRACTIONS ± 1/64 ANGLES ± 0° 30'	CODE		
				OPAQUE	H. AUSTIN
				TYPE & TEMPER	QC
				HEAT TREAT. SPEC.	J. P. Eaton
				FINISH & SPEC. NO.	WHITE "MATTE"
				ELEC. DES. APP.	MECH. DES. APP.
					PX933
					Ø

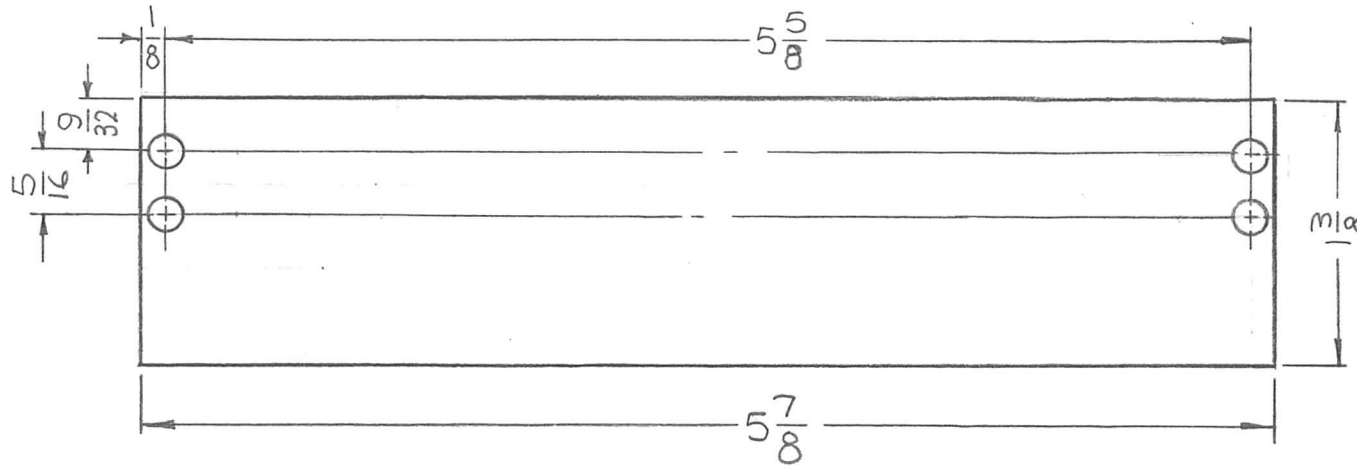
REQ. PER UNIT	USED ON			PX934	Ø
	MODEL	ASS'Y. NO.	DATE		
4	LRCC-1	AX567	4-23-65		
4	LRCM-1	AX568	4-23-65		



REQ.	ITEM	PART NO.	ZETENA	DESCRIPTION	SYMBOL
		.060 THK.	THE TECHNICAL MATERIEL CORP. MAMARONECK. NEW YORK		
		STOCK SIZE	LABEL, FRAME		
Ø	ORIGINAL RELEASE FOR PRODUCTION	4-23-65	HA	HUA	
SYM	DESCRIPTION	DATE	CH. NO.	DRAFTS	CHECKER
UNLESS OTHERWISE SPECIFIED DIMENSIONS ARE IN INCHES AND INCLUDE CHEMICALLY APPLIED OR PLATED FINISHES		SCALE	1:1		
DECIMALS .X ± .05 .XX ± .01 .XXX ± .005	TOLERANCES	FRACTIONS ± 1/64 ANGLES ± 0° 30'	CODE		
	OPAQUE	HEAT TREAT. SPEC.	H. AUSTIN	QC	J. C. Eaton 9/28/65
	WHITE "MATTE"	FINISH & SPEC. NO.	MECH. DES. APP.	PX934 Ø	

REQ. PER UNIT	USED ON			PX935	Ø
	MODEL	ASS'Y. NO.	DATE		
1	TSTE-10K	AX580	4-26-65		

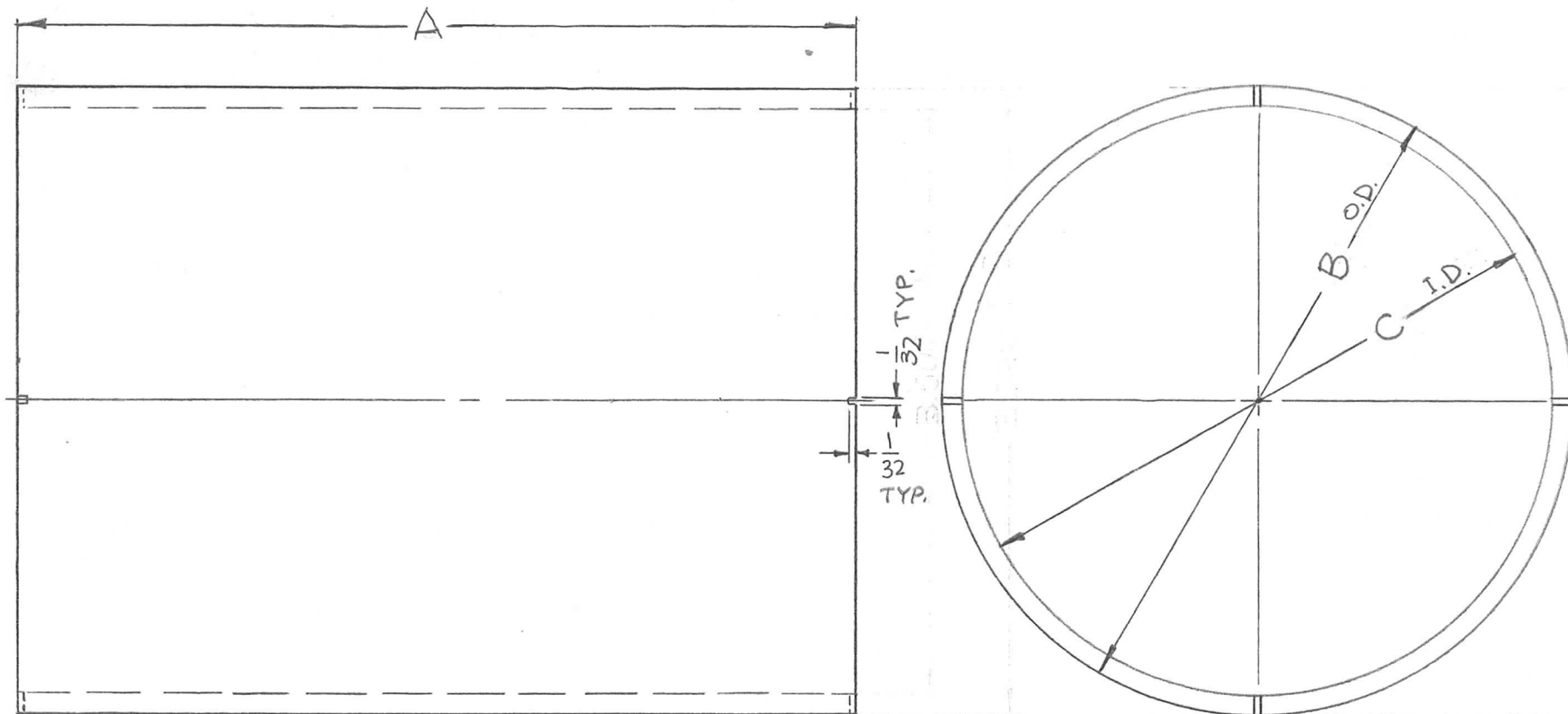
HOLES:
.175 DIA. (4 REQ.)



REF; LD1883-

REQ. ITEM	PART NO.	F. BUDETTI DESCRIPTION				SYMBOL
	1/8 THICK STOCK SIZE	THE TECHNICAL MATERIEL CORP. MAMARONECK. NEW YORK				
Ø	PHENOLIC	INSULATOR, TERM. STRIP				
		MATERIAL				
SYM	DESCRIPTION	DATE	CH. NO.	DRAFTS	CHECKER	ENG. APP.
	ORIGINAL RELEASE FOR PRODUCTION	4-29-66	Ø	WFO		WFO
UNLESS OTHERWISE SPECIFIED DIMENSIONS ARE IN INCHES AND INCLUDE CHEMICALLY APPLIED OR PLATED FINISHES		SCALE 1:1				
DECIMALS .X ± .05 .XX ± .01 .XXX ± .005	TOLERANCES	FRACTIONS ± 1/64 ANGLES ± 0° 30'	CODE A			
	XXXXP	—	SRG	QCB	M. H. King	
	TYPE & TEMPER	HEAT TREAT. SPEC.	DRAWN	CHECKED	FINAL APPROVAL	
	5113			WFO	PX935 Ø	
	FINISH & SPEC. NO.	ELEC. DES. APP.	MECH. DES. APP.			

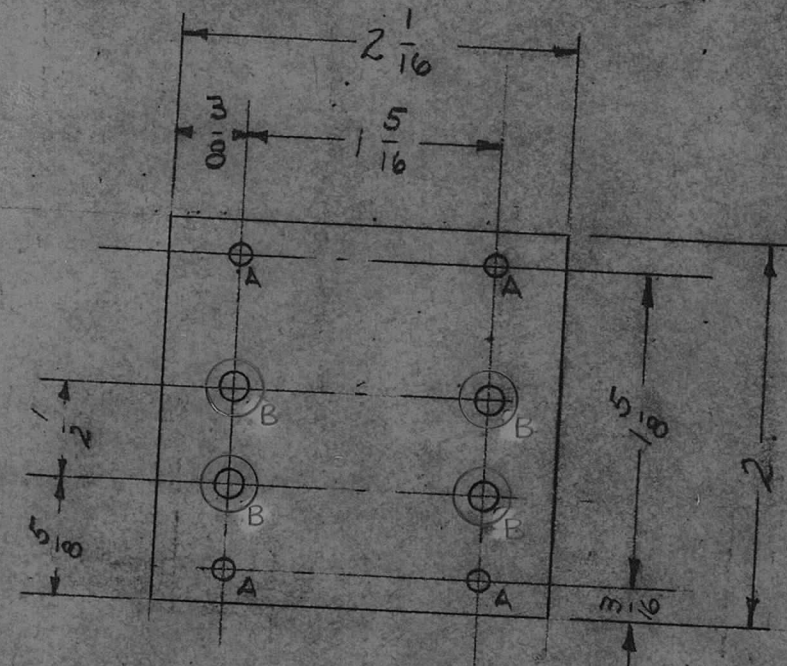
TMC PT. NO.	"A"	"B" (O.D)	"C" (I.D)		REQ. PER UNIT	USED ON			PX942	Ø
PX942-1	5"	3-3/4 DIA	3-1/2 DIA.		2	MODEL	ASS'Y. NO.	DATE		
						TSTE-10K	A 4240	4-26-65		



							REQ. ITEM	PART NO.	F. BUDETTI	DESCRIPTION	SYMBOL
							AS NOTED		THE TECHNICAL MATERIEL CORP.		
							STOCK SIZE		MAMARONECK, NEW YORK		
Ø	ORIGINAL RELEASE FOR PRODUCTION	3-3-66	M	Jc	JCB arc		PLEXIGLASS		INSULATOR, CAP. SUPPORT		
SYM	DESCRIPTION	DATE	CH. NO.	DRAFTS	CHECKER	ENG. APP.	MATERIAL				
UNLESS OTHERWISE SPECIFIED DIMENSIONS ARE IN INCHES AND INCLUDE CHEMICALLY APPLIED OR PLATED FINISHES		SCALE		1:1					SRG	JCB	Military
DECIMALS	TOLERANCES	FRACTIONS	CODE				TYPE & TEMPER	HEAT TREAT. SPEC.	DRAWN	CHECKED	FINAL APPROVAL
.X ± .05 .XX ± .01 .XXX ± .005		± 1/64 ANGLES ± 0° 30'	A				NATURAL				PX942
							FINISH & SPEC. NO.		ELEC. DES. APP.	MECH. DES. APP.	Ø

REQ. PER UNIT	USED ON			PX-943
	MODEL	ASS'Y. NO.	DATE	
1	TST-10K			

- A- #33 DR (.113) 4 REQ'D.
- B- DR.144 C'SINK 82°X 337DIA 4 "



NOTICE TO PERSONS RECEIVING THIS DRAWING

THE TECHNICAL MATERIEL CORPORATION claims proprietary right in the material disclosed hereon. This drawing is issued in confidence for engineering information only and may not be reproduced or used to manufacture anything shown hereon without permission from THE TECHNICAL MATERIEL CORPORATION to the user. This drawing is loaned for mutual assistance and is subject to recall at any time.

Property of:
THE TECHNICAL MATERIEL CORPORATION
MAMARONECK, NEW YORK

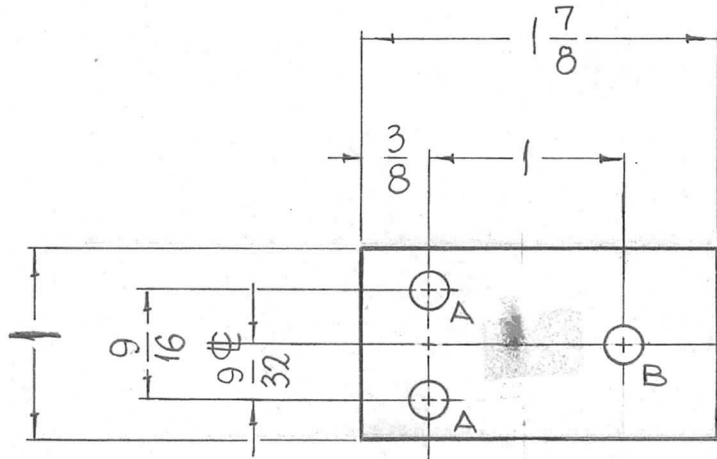
* FUNGUS PROOFING PER TMC SPECIFICATION S-113

ISSUE	ITEM	CHANGED FROM	DATE	CH. NO.	DRAFTS	CHECKER	ENG. APP.	REQ. ITEM	PART NO.	DESCRIPTION	SYMBOL
								1/8 THICK		THE TECHNICAL MATERIEL CORP.	
								STOCK SIZE		MAMARONECK, NEW YORK	
								PHENOLIC		PLATE, RELAY MOUNTING	
								MATERIAL		PA SCREEN ON-OFF & TUNE OPERATOR	
								XXXXP		TESTED <i>JD</i>	<i>ARF</i>
								TYPE & TEMPER	HEAT TREAT. SPEC.	DRAWN	CHECKED
								NATURAL *			FINAL APPROVAL
								FINISH & SPEC. NO.			PX 943
										ELEC. DES. APP	MECH. DES. APP

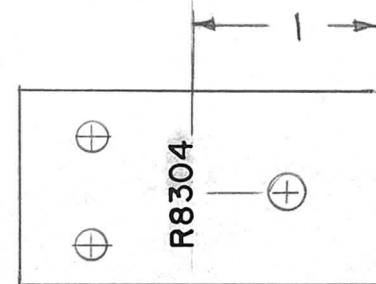
TOLERANCES
DEC. DIM. ±
FRAC. DIM. ±
ANGULAR DIM. ±

SCALE:
MAXIMUM ALLOWABLE TOLERANCES HAVE BEEN DETERMINED AND ANY DEVIATIONS WILL BE CAUSE FOR REJECTION. REMOVE ALL BURRS AND SHARP EDGES

REQ. PER UNIT	USED ON			PX947 A
	MODEL	ASS'Y. NO.	DATE	
2	GPT-200K	AX 398	5-20-65	



A - 11/64 (.171) DIA.
 B - 13/64 (.203) DIA.



MARKING PROCESS: AS PER TMC SPECIFICATION S727
 LETTERING: 1/8 HIGH GOTHIC, LOCATED AS SHOWN

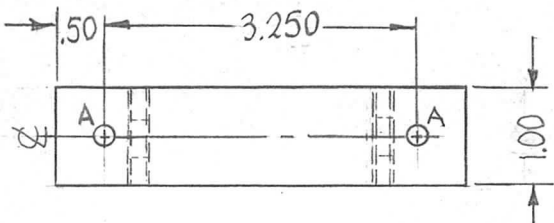
NOTE:
 FINISH - FUNGUS PROOFING PER TMC SPECIFICATION S-113

REQ.	ITEM	PART NO.	BUDETTI	DESCRIPTION	SYMBOL
		3/16 THK		THE TECHNICAL MATERIEL CORP. MAMARONECK. NEW YORK	
		STOCK SIZE		INSULATOR POTENTIOMETER	
		PHENOLIC		RELAY PANEL	
		MATERIAL			
		XXXXP			
		TYPE & TEMPER	HEAT TREAT. SPEC.	DRAWN	CHECKED
		SEE NOTE			
		FINISH & SPEC. NO.	ELEC. DES. APP.	MECH. DES. APP.	PX947 A

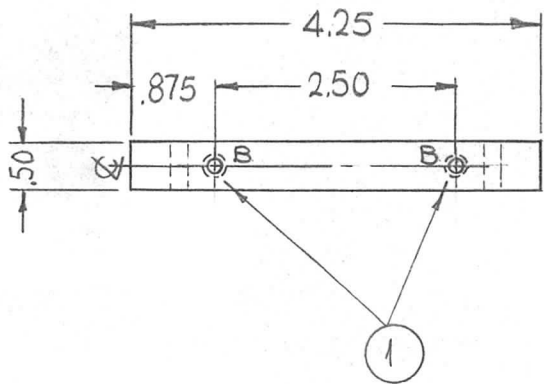
SYM	DESCRIPTION	DATE	CH. NO.	DRAFTS	CHECKER	ENG. APP.
A	R8304 & MARKING NOTE ADDED	3-7-64	17889	GDL		
X	ORIGINAL RELEASE FOR PRODUCTION	4/25/65	Ø	ZW		

UNLESS OTHERWISE SPECIFIED DIMENSIONS ARE IN INCHES AND INCLUDE CHEMICALLY APPLIED OR PLATED FINISHES		SCALE
DECIMALS .X ± .05 .XX ± .01 .XXX ± .005	TOLERANCES	FRACTIONS ± 1/64 ANGLES ± 0° 30'

REQ. PER UNIT	USED ON			PX952	Ø
	MODEL	ASS'Y. NO.	DATE		
7	TST-10K		6-25-65		



HOLES	DESCRIPTION	REQ.
A	11/64 DIA. SCREW	2
B	6-32 HELI-COIL	2

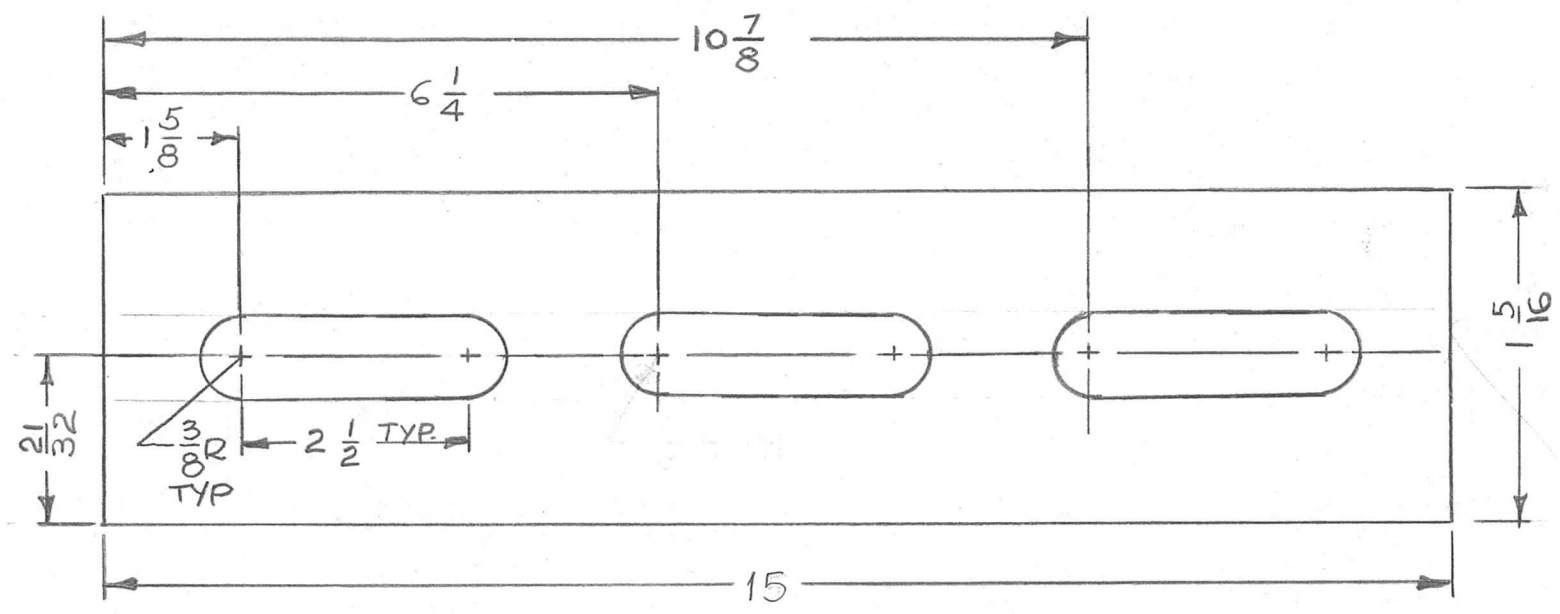


		A HOLES	
		NO	
		YES	

Ø	ORIGINAL RELEASE FOR PRODUCTION	3-3-66	AA	Jc	CB	anc	4	1	NT139-SC06-20	INSERT, SCREW THREAD	B						
X2	PX952-1 DELETED	8-2-65	X2				REQ.	ITEM	PART NO.	F. BUDETTI DESCRIPTION	SYMBOL						
X1	3.250 WAS 3-1/4	7-20-65	X1						.50 THICK	THE TECHNICAL MATERIEL CORP. MAMARONECK, NEW YORK							
									STOCK SIZE		SUPPORT, WAFER						
									G10 EPOXY								
									MATERIAL								
UNLESS OTHERWISE SPECIFIED DIMENSIONS ARE IN INCHES AND INCLUDE CHEMICALLY APPLIED OR PLATED FINISHES		SCALE 1:1															
DECIMALS .X ± .05 .XX ± .01 .XXX ± .005		FRACTIONS ± 1/64 ANGLES ± 0° 30'		CODE A				TYPE & TEMPER NATURAL		HEAT TREAT. SPEC.		DRAWN SRJ		CHECKED CB		FINAL APPROVAL M. May	
TOLERANCES								FINISH & SPEC. NO.		ELEC. DES. APP.		MECH. DES. APP.		PX952		Ø	

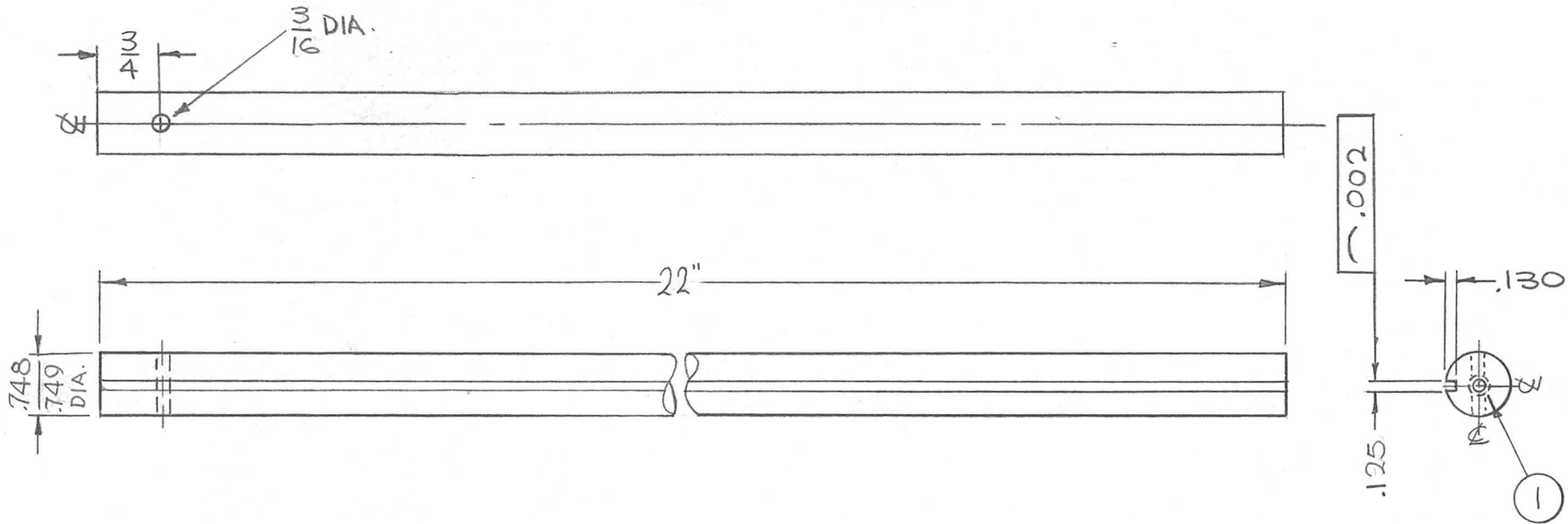
REQ. PER UNIT	USED ON		
	MODEL	ASS'Y. NO.	DATE
4	RTID-1		
4	RTIF-1		
4	RTIG-1		

PX954 | \emptyset



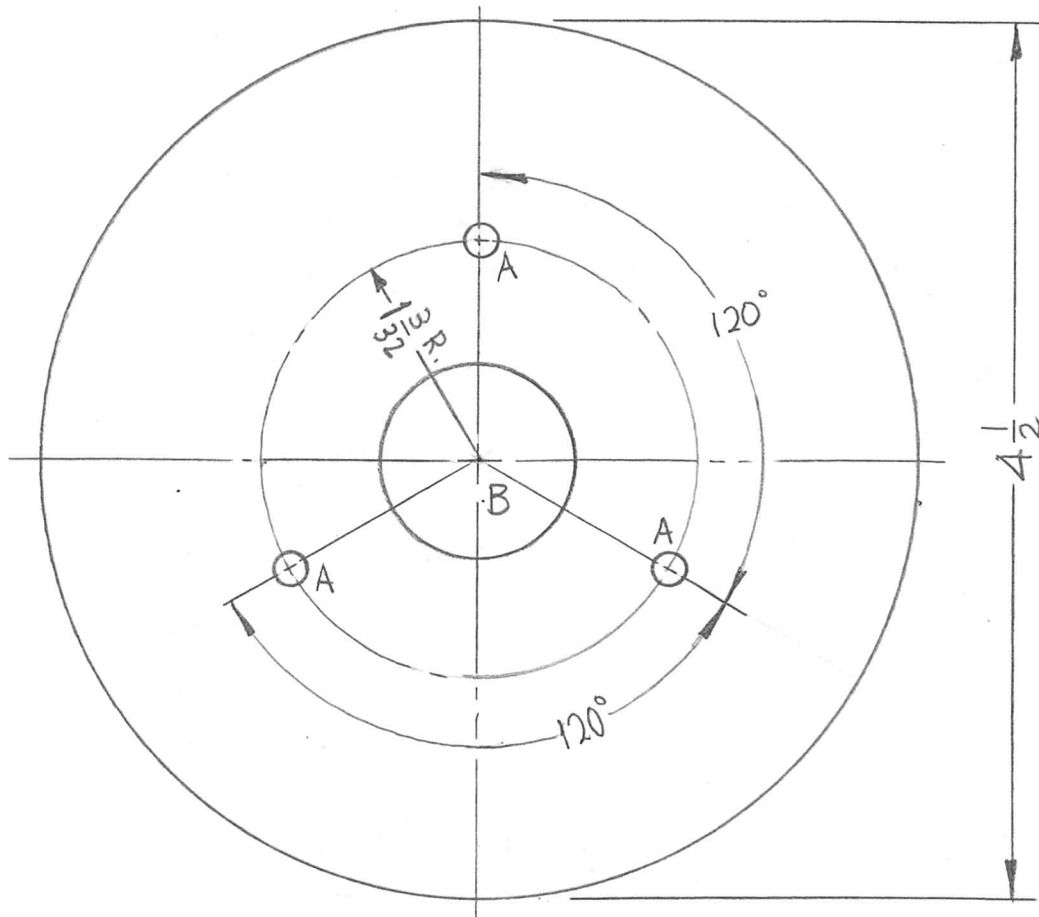
SYM	DESCRIPTION	DATE	CH. NO.	DRAFTS	CHECKER	ENG. APP.	REQ. ITEM	PART NO.	EATON	DESCRIPTION	SYMBOL	
								.031 THICK		THE TECHNICAL MATERIEL CORP.		
								STOCK SIZE		MAMARONECK. NEW YORK		
								PHENOLIC		INSULATOR, GUIDES		
								MATERIAL				
\emptyset	ORIGINAL RELEASE FOR PRODUCTION	8/5/65			AVV		XXXXP		A. VENEZIAN	JCB	8/5/65	
	UNLESS OTHERWISE SPECIFIED DIMENSIONS ARE IN INCHES AND INCLUDE CHEMICALLY APPLIED OR PLATED FINISHES	SCALE DO NOT SCALE.						TYPE & TEMPER	HEAT TREAT. SPEC.	DRAWN	CHECKED	FINAL APPROVAL
	DECIMALS .X \pm .05 .XX \pm .01 .XXX \pm .005	FRACTIONS \pm 1/64 ANGLES \pm 0° 30'	CODE				NATURAL S113 FUNGUS PROOF			W. JORDAN	8/5/65	PX954 \emptyset
	TOLERANCES						FINISH & SPEC. NO.		ELEC. DES. APP.	MECH. DES. APP.		

REQ. PER UNIT	USED ON			PX956	Ø
	MODEL	ASS'Y. NO.	DATE		
1	AF105	A5388	7-20-65		



Ø	ORIGINAL RELEASE FOR PRODUCTION	4-29-66	Ø	WFW		File	1	1	NT139-SFI-20	INSERT, SCREW, THREAD			
X3	ITEM 1 WAS NT139-SCC-20	4-7-66	X3	B-DL			REQ.	ITEM	PART NO.	F. BUDETTI DESCRIPTION	SYMBOL		
X2	22 WAS 24, 3/16 HOLE ADDED						AS NOTED		THE TECHNICAL MATERIEL CORP. MAMARONECK, NEW YORK				
X1	SLOT ADDED, 24" WAS 25" ITEM 1 ADDED.	7-20-65	X1	RPH			EPOXY-G11		SHAFT, LOW PASS FILTER, SWITCHING				
SYM	DESCRIPTION	DATE	CH. NO.	DRAFTS	CHECKER	ENG. APP.	MATERIAL						
UNLESS OTHERWISE SPECIFIED DIMENSIONS ARE IN INCHES AND INCLUDE CHEMICALLY APPLIED OR PLATED FINISHES		SCALE		1/2 : 1			TYPE & TEMPER		HEAT TREAT. SPEC.		DRAWN	CHECKED	FINAL APPROVAL
DECIMALS .X ± .05 .XX ± .01 .XXX ± .005		FRACTIONS ± 1/64 ANGLES ± 0° 30'		TOLERANCES		CODE A	FINISH & SPEC. NO.		ELEC. DES. APP.	MECH. DES. APP.	PX956		Ø

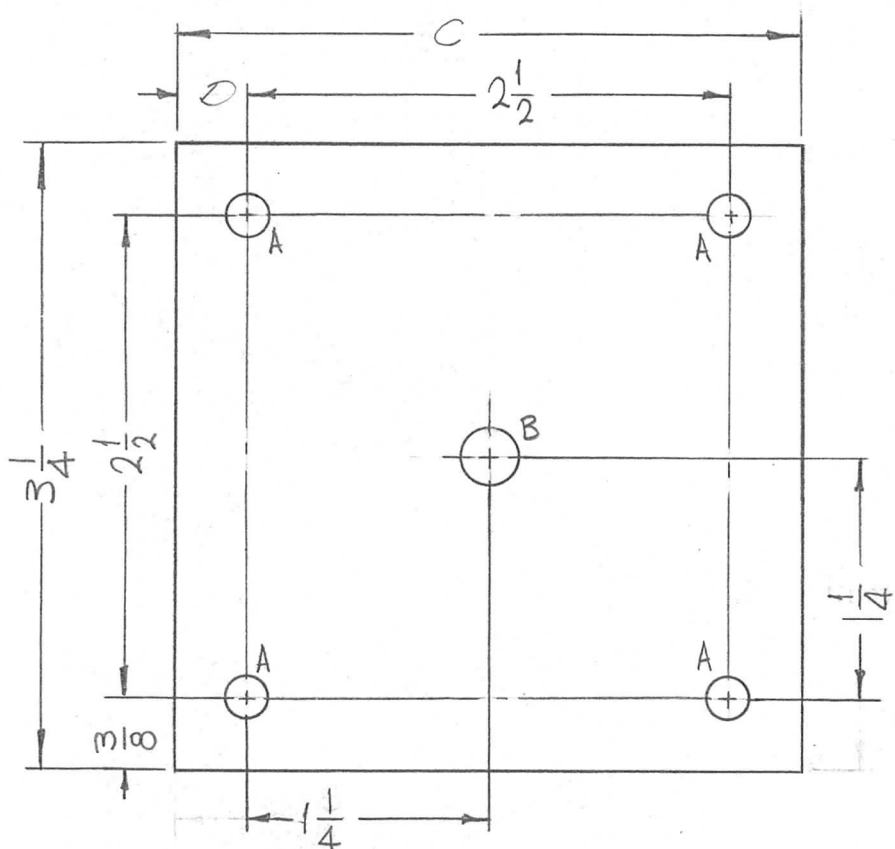
REQ. PER UNIT	USED ON			PX958	Ø
	MODEL	ASS'Y. NO.	DATE		
3	TST-10K		8-12-65		



HOLES:
 A - 11/64 DIA. - 3 REQ.
 B - 1" DIA. - 1 REQ.

							REQ. ITEM	PART NO.	F. BUDETT (DESCRIPTION)	SYMBOL			
								1/16 THICK	THE TECHNICAL MATERIEL CORP. MAMARONECK, NEW YORK				
								STOCK SIZE					
Ø	ORIGINAL RELEASE FOR PRODUCTION	33-66	-A-	Jc	QCB arc			TEFLON	SHIELD, CORONA				
SYM	DESCRIPTION	DATE	CH. NO.	DRAFTS	CHECKER	ENG. APP.		MATERIAL					
UNLESS OTHERWISE SPECIFIED DIMENSIONS ARE IN INCHES AND INCLUDE CHEMICALLY APPLIED OR PLATED FINISHES		SCALE						TFE	---	SPH	QCB	11/12/65	
		1:1						TYPE & TEMPER	HEAT TREAT. SPEC.	DRAWN	CHECKED	FINAL APPROVAL	
DECIMALS .X ± .05 .XX ± .01 .XXX ± .005	TOLERANCES	FRACTIONS ± 1/64 ANGLES ± 0° 30'	CODE A									PX958	Ø
								FINISH & SPEC. NO.	ELEC. DES. APP.	MECH. DES. APP.			

TMC PIN	C	D	REQ. PER UNIT	USED ON			PX 959	A
PX 959	3 1/4	3/8	1	MODEL	ASS'Y. NO.	DATE		
PX 959 -2	3	1/4		TST-10K		8-12-65		



HOLES	DESCRIPTION	REQ.
A	13/64 DIA.	4
B	9/32 DIA.	1

SYM	DESCRIPTION	DATE	CH. NO.	DRAFTS	CHECKER	ENG. APP.	REQ. ITEM	PART NO.	F. BUDETTI	DESCRIPTION	SYMBOL
A	ADD PIN CHT. TO INCL.-2	4-28-70	19824	GE	<i>[Signature]</i>		1/8 THICK			THE TECHNICAL MATERIEL CORP. MAMARONECK, NEW YORK	
Ø	ORIGINAL RELEASE FOR PRODUCTION	3-3-66	AA	Jc	<i>[Signature]</i>		STOCK SIZE			INSULATOR, RF FEEDTHRU	
							TEFLON				
							MATERIAL				
							TFE	—	<i>[Signature]</i>	<i>[Signature]</i>	<i>[Signature]</i>
							TYPE & TEMPER	HEAT TREAT. SPEC.	DRAWN	CHECKED	FINAL APPROVAL
											PX 959
							FINISH & SPEC. NO.		ELEC. DES. APP.	MECH. DES. APP.	A

UNLESS OTHERWISE SPECIFIED
DIMENSIONS ARE IN INCHES AND INCLUDE
CHEMICALLY APPLIED OR PLATED FINISHES

DECIMALS
.X ± .05
.XX ± .01
.XXX ± .005

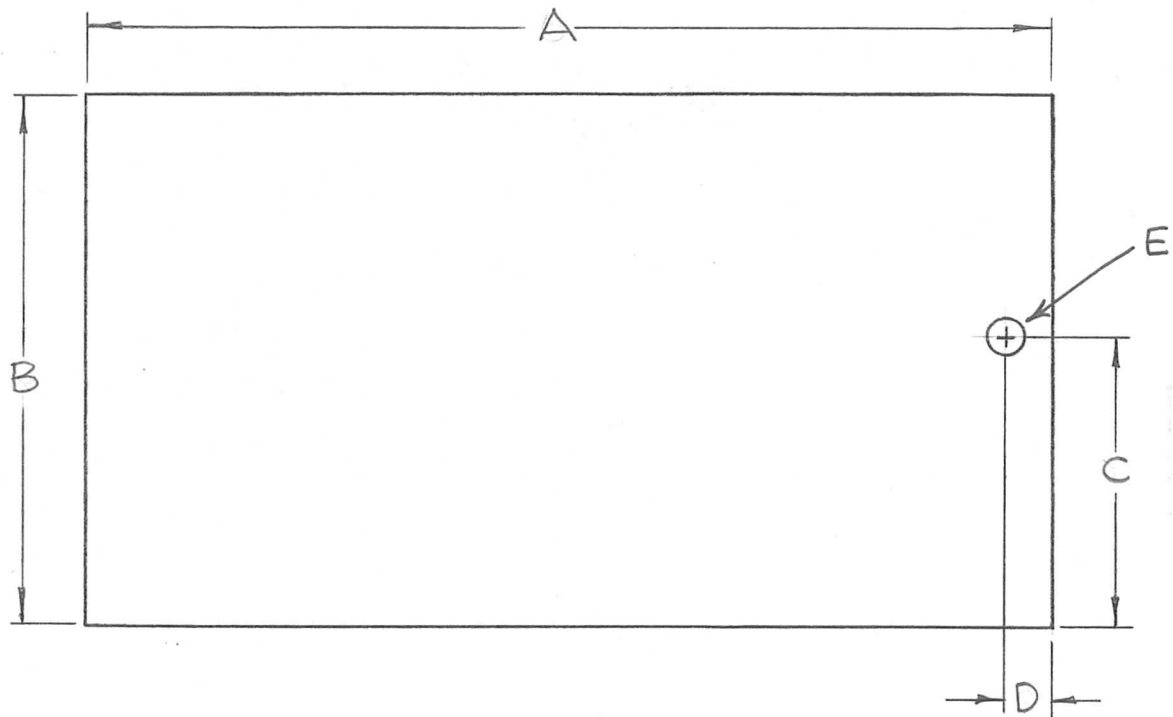
FRACTIONS
± 1/64
ANGLES
± 0° 30'

TOLERANCES

CODE
A

SCALE
1:1

TMC PT. NO.	"A"	"B"	"C"	"D"	"E" DIA.	REQ.	REQ. PER UNIT	USED ON			PX963	Ø
								MODEL	ASS'Y. NO.	DATE		
PX963-1	5"	2-3/4	1-1/2	1/4	3/16 D	3	SEE CHART	TST-10K		8-26-65		
PX963-2	5"	1-1/4	1/2	3/4	3/16 D	1						

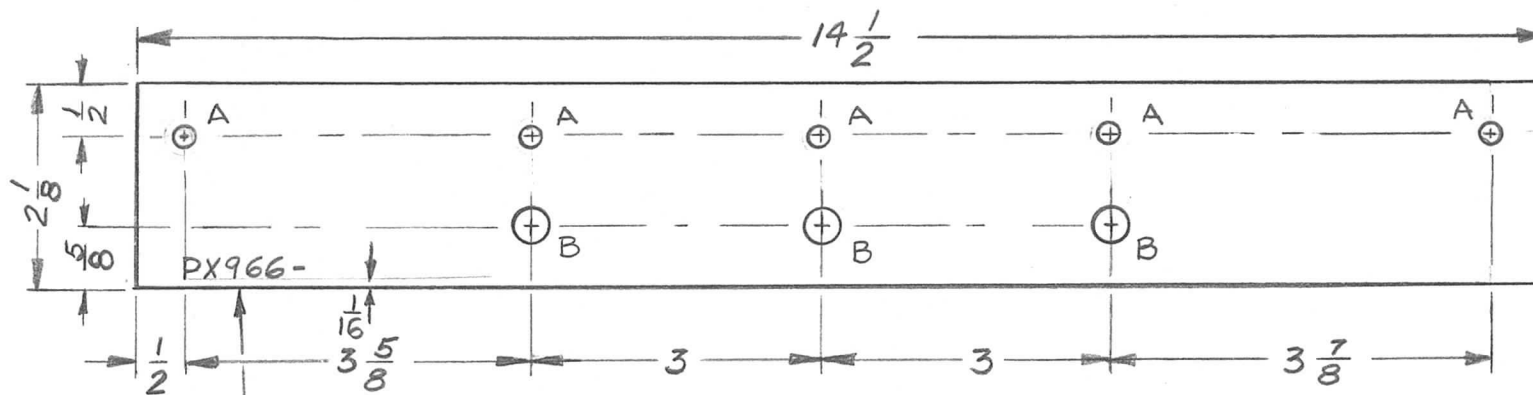


REQ.	ITEM	PART NO.	F. BUDETTI	DESCRIPTION	SYMBOL	
		1/8 THICK		THE TECHNICAL MATERIEL CORP.		
		STOCK SIZE		MAMARONECK, NEW YORK		
Ø	ORIGINAL RELEASE FOR PRODUCTION	3-3-66	AM	Jc	QCB arc	
SYM	DESCRIPTION	DATE	CH. NO.	DRAFTS	CHECKER	ENG. APP.
	UNLESS OTHERWISE SPECIFIED DIMENSIONS ARE IN INCHES AND INCLUDE CHEMICALLY APPLIED OR PLATED FINISHES	SCALE	1:1			
	DECIMALS .X ± .05 .XX ± .01 .XXX ± .005	FRACTIONS ± 1/64 ANGLES ± 0° 30'	CODE	A		
	TOLERANCES					
	TEFLON					
	TFE					
	TYPE & TEMPER	HEAT TREAT. SPEC.	DRAWN	CHECKED	FINAL APPROVAL	
	FINISH & SPEC. NO.	ELEC. DES. APP.	MECH. DES. APP.	PX963	Ø	

HOLE	REQ
A 13/64 DIA.	5
B 1/2 DIA.	3

REQ. PER UNIT	USED ON		
	MODEL	ASS'Y. NO.	DATE
1	HVRC-2		

PX966	B
-------	---

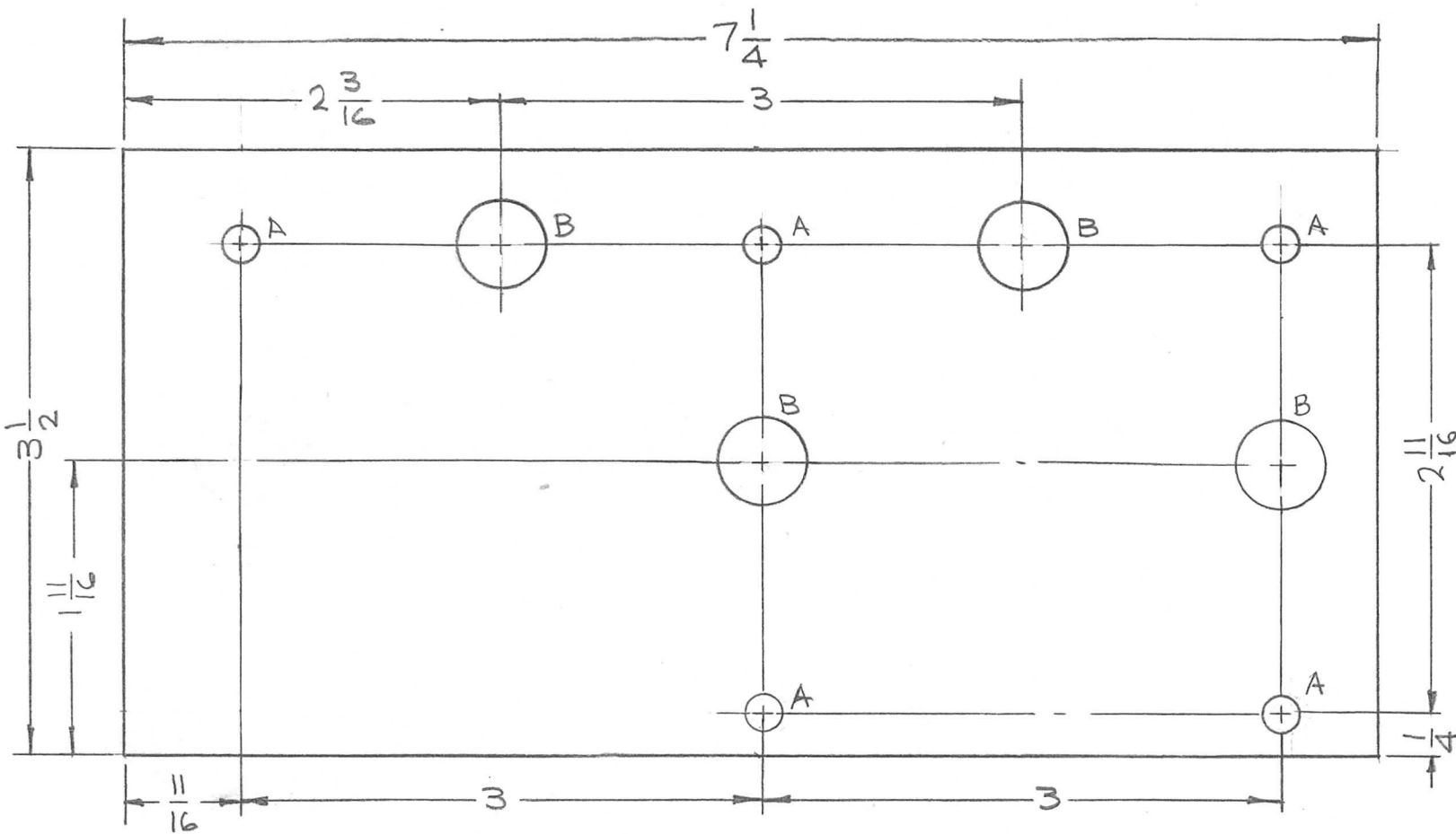


MARK TMC PT.
No. W/LATEST
REVISION LETTER

REF.:LD2021

REQ. ITEM	PART NO.	BUDETTI	DESCRIPTION	SYMBOL				
B	"B" HOLE WAS 3/8	9-22-66	16862	RME	QC/B	0205	3/32 THK.	THE TECHNICAL MATERIEL CORP. MAMARONECK, NEW YORK
A	CLERICAL CHANGE	12/1/65	C.C.	A.V.V.	QC/B	NK	STOCK SIZE	BOARD CAPACITOR MOUNTING
Ø	ORIGINAL RELEASE FOR PRODUCTION	11/19/65	Ø	A.V.V.			EPOXY	
SYM	DESCRIPTION	DATE	CH. NO.	DRAFTS	CHECKER	ENG. APP.	MATERIAL	
UNLESS OTHERWISE SPECIFIED DIMENSIONS ARE IN INCHES AND INCLUDE CHEMICALLY APPLIED OR PLATED FINISHES		SCALE		DO NOT SCALE				
DECIMALS	TOLERANCES	FRACTIONS	CODE					
.X ± .05		± 1/64						
.XX ± .01		ANGLES						
.XXX ± .005		± 0° 30'						
G11		DAVID V. VENEZIAN		QC/B		11/19/65		
TYPE & TEMPER		HEAT TREAT. SPEC.		DRAWN		CHECKED		FINAL APPROVAL
								PX966 B
FINISH & SPEC. NO.		ELEC. DES. APP.		MECH. DES. APP.				

REQ. PER UNIT	USED ON			PX967	Ø
	MODEL	ASS'Y. NO.	DATE		
1	HVRB-2		11-22-65		



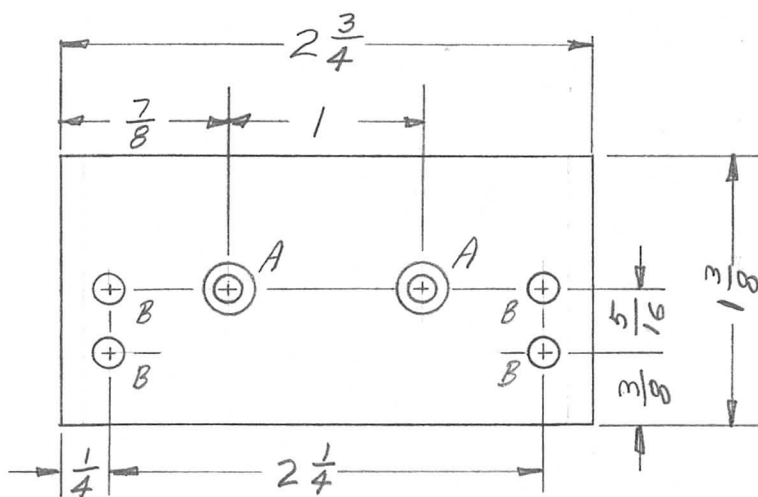
HOLES:
 A ~ 13/64 DIA. (5 REQ)
 B ~ 1/2 DIA (4 REQ)

REF: LD 2025

REQ. ITEM	PART NO.	F. BUDETTI	DESCRIPTION	SYMBOL
	3/32 THICK		THE TECHNICAL MATERIEL CORP. MAMARONECK, NEW YORK	
	STOCK SIZE			
Ø	ORIGINAL RELEASE FOR PRODUCTION	6/14/66	Ø CV	<i>[Signature]</i>
X1	THICKNESS WAS 1/8	11-23-65	X1	<i>[Signature]</i>
SYM	DESCRIPTION	DATE	CH. NO.	DRAFTS
UNLESS OTHERWISE SPECIFIED DIMENSIONS ARE IN INCHES AND INCLUDE CHEMICALLY APPLIED OR PLATED FINISHES		SCALE 1:1		
DECIMALS .X ± .05 .XX ± .01 .XXX ± .005	TOLERANCES	FRACTIONS ± 1/64 ANGLES ± 0° 30'	CODE A	
	G10		<i>[Signature]</i>	<i>[Signature]</i>
	TYPE & TEMPER	HEAT TREAT. SPEC.	DRAWN	CHECKED
			<i>[Signature]</i> 6-14-66	<i>[Signature]</i>
	FINISH & SPEC. NO.	ELEC. DES. APP.	MECH. DES. APP.	PX967

MIL 210

REQ. PER UNIT	USED ON			PX 968	Ø
	MODEL	ASS'Y. NO.	DATE		
1	KIT180		13 JAN 66		



FUNGUS PROOFING PER TMC SPEC. S113
 APPLIED AFTER LETTERING.

A ~ .120 DIA. CTSK 82° TO .230 DIA 2 REQ.

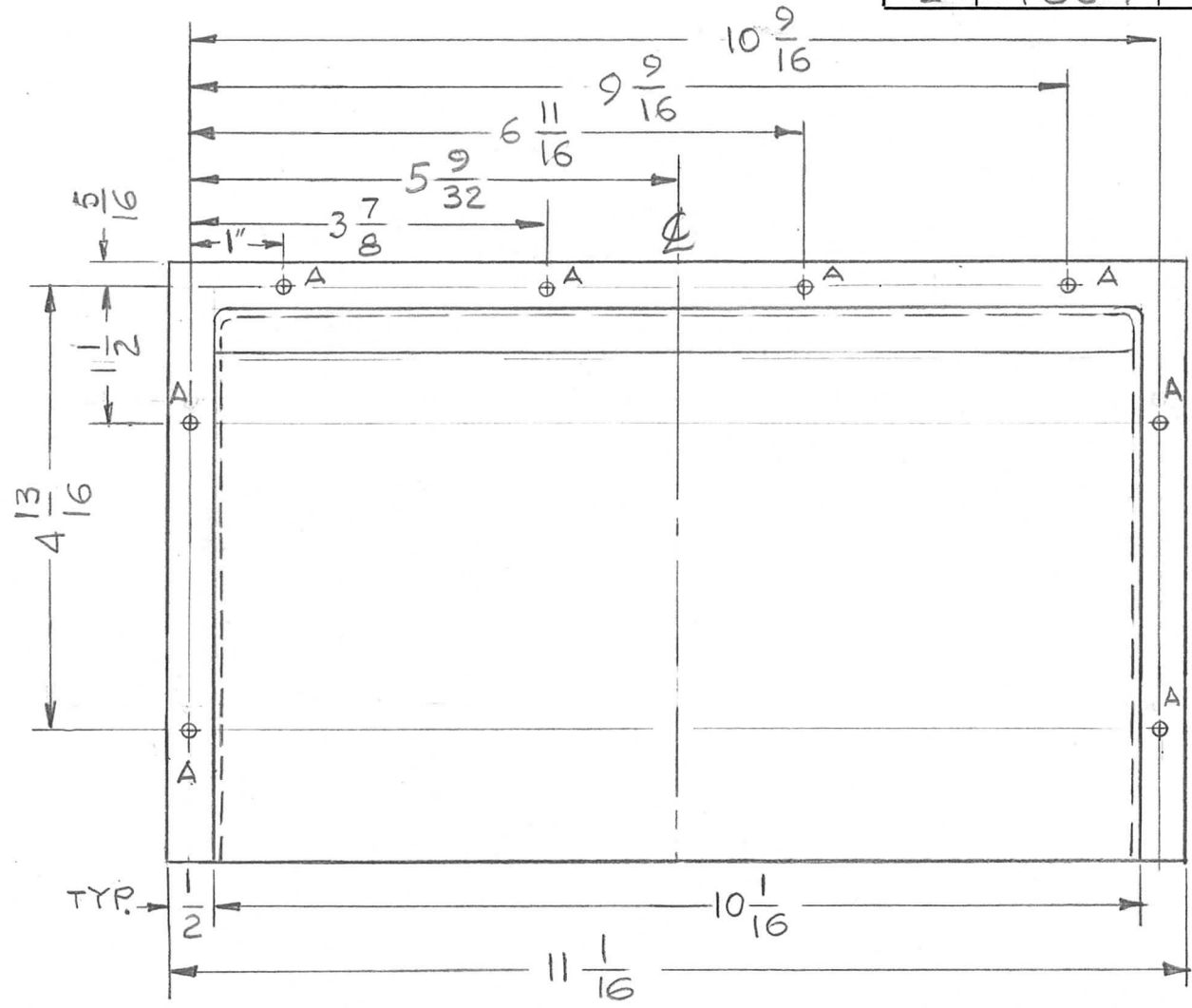
B ~ 9/64 DIA 4 REQ.

REF: LD2039

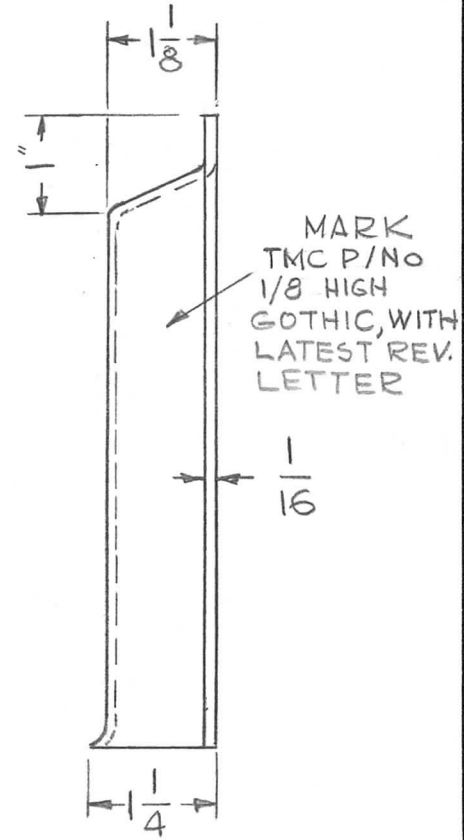
REQ.	ITEM	PART NO.	DESCRIPTION				SYMBOL		
		1/8	THE TECHNICAL MATERIEL CORP. MAMARONECK. NEW YORK						
			STOCK SIZE						
Ø	ORIGINAL RELEASE	2/2/66	PHENOLIC				INSULATOR, TERMINAL STRIP		
SYM	DESCRIPTION	DATE	CH. NO.	DRAFTS	CHECKER	ENG. APP.			
UNLESS OTHERWISE SPECIFIED DIMENSIONS ARE IN INCHES AND INCLUDE CHEMICALLY APPLIED OR PLATED FINISHES		SCALE							
DECIMALS .X ± .05 .XX ± .01 .XXX ± .005	TOLERANCES	FRACTIONS ± 1/64 ANGLES ± 0° 30'	CODE						
					XXXX	JEM	JDE 2/2/66	A. May	
					NATURAL		RIP	PX 968	Ø
					FINISH & SPEC. NO.	ELEC. DES. APP.	MECH. DES. APP.		

REQ. PER UNIT	USED ON		
	MODEL	ASS'Y. NO.	DATE
2	TOC-7	A5434	2-17-66

PX 971 \emptyset



HOLE
A - 9/64 DIA. 8 REQ.



MARK
TMC P/NO
1/8 HIGH
GOTHIC, WITH
LATEST REV.
LETTER

							REQ. ITEM	PART NO.	POSE	DESCRIPTION	SYMBOL		
									THE TECHNICAL MATERIEL CORP. MAMARONECK, NEW YORK				
									FLUE, AIR				
									FIBERGLASS				
									MATERIAL				
									G.D.L. 2-17-66				
									TYPE & TEMPER	HEAT TREAT. SPEC.	DRAWN	CHECKED	FINAL APPROVAL
									5756 SYN GY ENAMEL				
									FINISH & SPEC. NO.	ELEC. DES. APP.	MECH. DES. APP.		
												PX 971	\emptyset

UNLESS OTHERWISE SPECIFIED
DIMENSIONS ARE IN INCHES AND INCLUDE
CHEMICALLY APPLIED OR PLATED FINISHES

SCALE 1:2

DATE 2/20/66

CH. NO. C.V.

DRAFTS CHECKER ENG. APP.

DECIMALS .X ± .05 .XX ± .01 .XXX ± .005

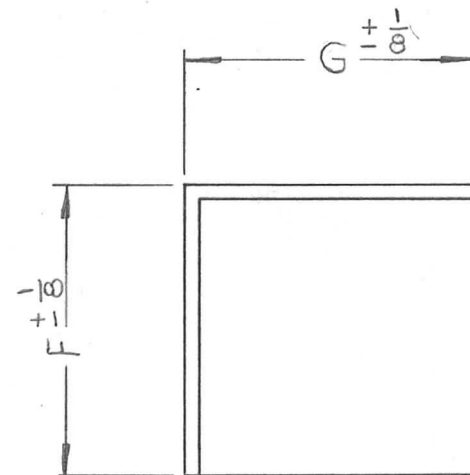
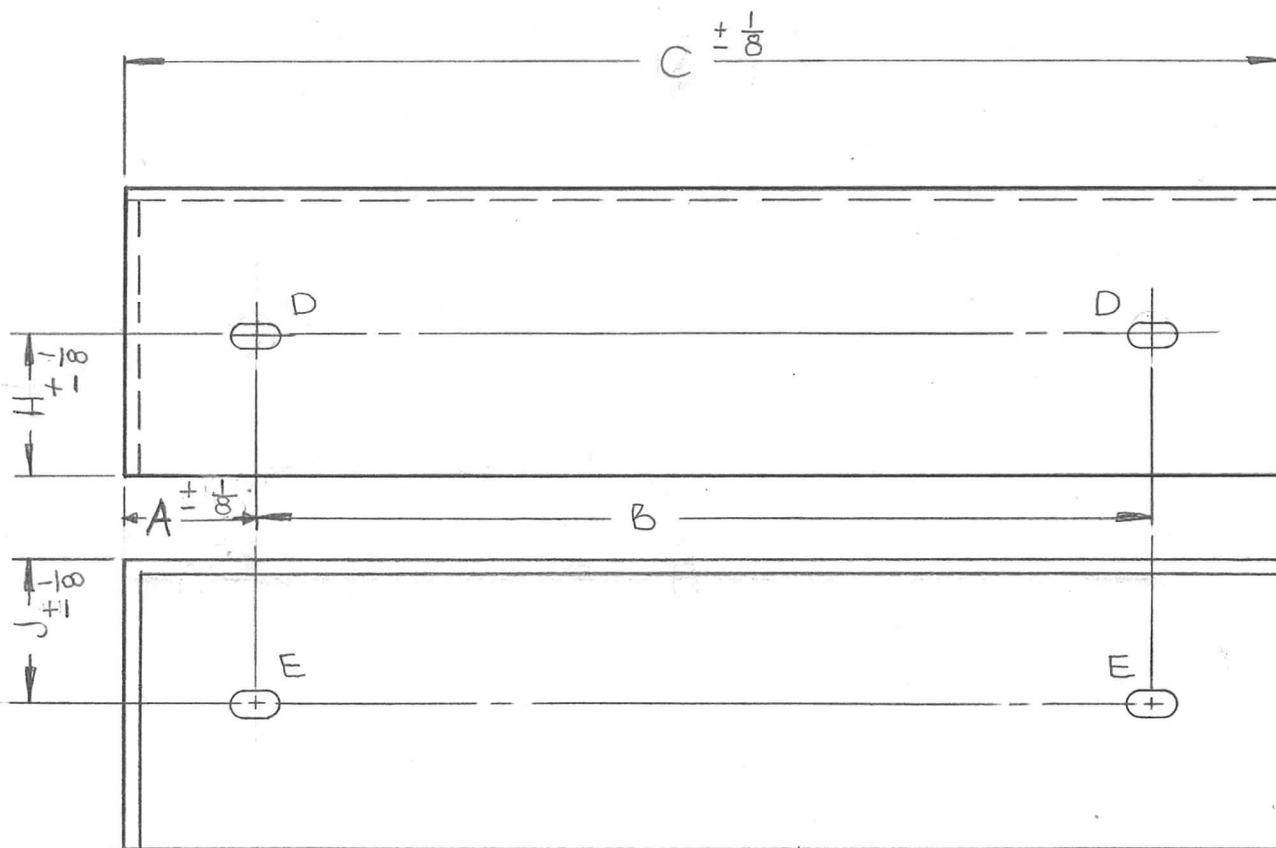
FRACTIONS ± 1/64 ANGLES ± 0° 30'

TOLERANCES

CODE A

PT/No	A	B	C	D	E	F	G	H	J
PX973-1	1 1/2	11	14	NONE	1/4 X 1/2	3	3	#	1-1/2
PX973-2	1 1/2	14	17	NONE	1/4 X 1/2	3	3	#	1-1/2
PX973-3	1-1/2	11	14	1/4-1/2	#	3	3	1 1/2	#

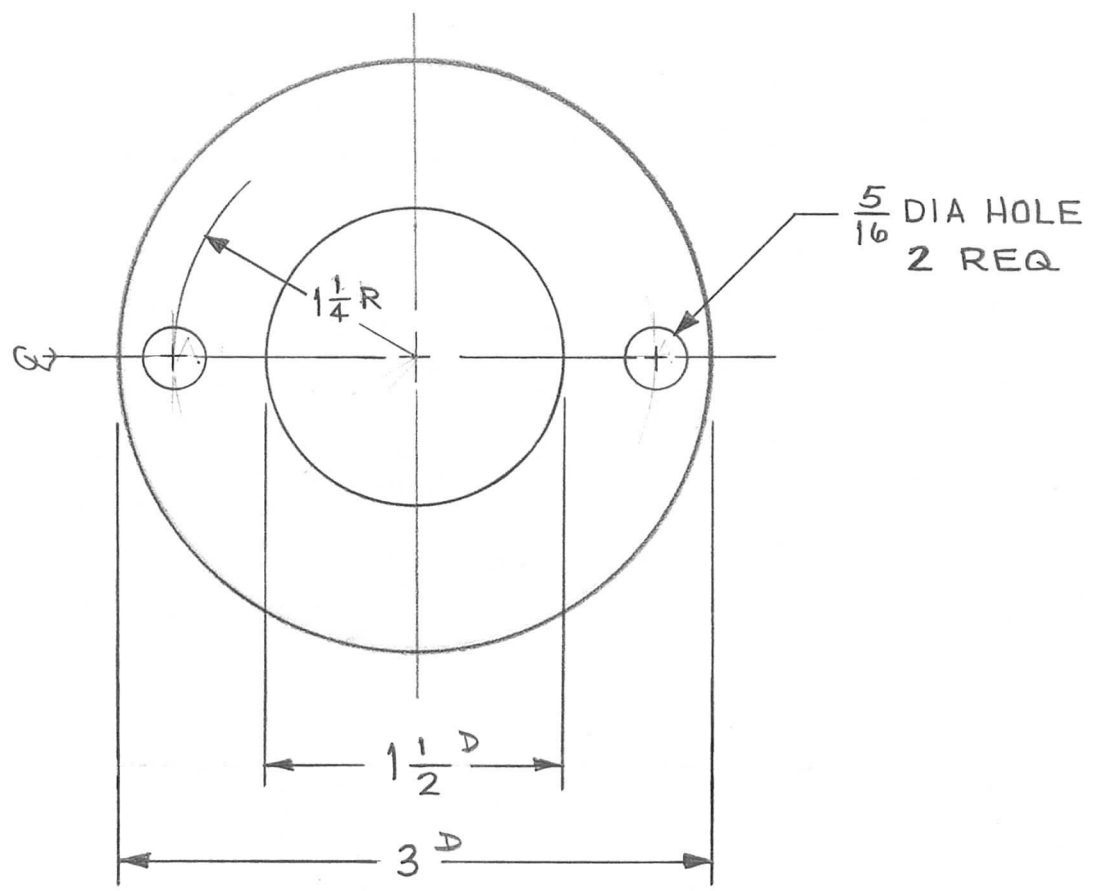
REQ. PER UNIT	USED ON			PX973	G
	MODEL	ASS'Y. NO.	DATE		
	GPT40KEF		6.7.66		
TSTE-10K					



C	± 1/8 ADDED (TOL)	8-25-67	18474	H.G.	<i>[Signature]</i>	FB	<i>[Signature]</i>
B	ADDED PX973-3	1-3-67	17590	RME	<i>[Signature]</i>	<i>[Signature]</i>	<i>[Signature]</i>
A	DIM D, E, F, G, H & J ADD CHART	10.12.66	17030	WTO	<i>[Signature]</i>	<i>[Signature]</i>	<i>[Signature]</i>
Ø	ORIGINAL RELEASE FOR PRODUCTION	6-22-66	Ø	<i>[Signature]</i>	<i>[Signature]</i>	<i>[Signature]</i>	<i>[Signature]</i>
X ₁	DWG TABULATED	6.14.66	#	WTO			
SYM	DESCRIPTION	DATE	CH. NO.	DRAFTS	CHECKER	ENG. APP.	
UNLESS OTHERWISE SPECIFIED DIMENSIONS ARE IN INCHES AND INCLUDE CHEMICALLY APPLIED OR PLATED FINISHES		SCALE DO NOT SCALE					
DECIMALS .X ± .05 .XX ± .01 .XXX ± .005	TOLERANCES	FRACTIONS ± 1/64 ANGLES ± 0° 30'	CODE				

REQ. ITEM	PART NO.	BUDETTI	DESCRIPTION	SYMBOL
			THE TECHNICAL MATERIEL CORP. MAMARONECK, NEW YORK	
			COVER, PROTECT XFMR	
			STOCK SIZE 3 LAYER FIBERGLASS	
			MATERIAL	
		<i>[Signature]</i>	<i>[Signature]</i>	<i>[Signature]</i>
		WTO	QC/S	<i>[Signature]</i>
		TYPE & TEMPER	HEAT TREAT. SPEC.	
		SI15 TMC GRAY	QC 6-14-66	
		FINISH & SPEC. NO.	ELEC. DES. APP.	MECH. DES. APP.
				PX973
				G

REQ. PER UNIT	USED ON			PX979	Ø
	MODEL	ASS'Y. NO.	DATE		
1	GPT-10K	A-1696	3-4-66		



REQ.	ITEM	PART NO.	DESCRIPTION		SYMBOL
			1/16 THICK		THE TECHNICAL MATERIEL CORP. MAMARONECK, NEW YORK
			STOCK SIZE		
			PHENDOLIC		INSULATOR, DISC
			MATERIAL		
			XXXXP	M. TANTILLO 3-4-66	QC/B
			TYPE & TEMPER	HEAT TREAT. SPEC.	DRAWN
			NATURAL		CHECKED
			FINISH & SPEC. NO.	ELEC. DES. APP.	MECH. DES. APP.
					PX979

UNLESS OTHERWISE SPECIFIED
DIMENSIONS ARE IN INCHES AND INCLUDE
CHEMICALLY APPLIED OR PLATED FINISHES

SCALE

DECIMALS .X ± .05
.XX ± .01
.XXX ± .005

FRACTIONS ± 1/64
ANGLES ± 0° 30'

TOLERANCES

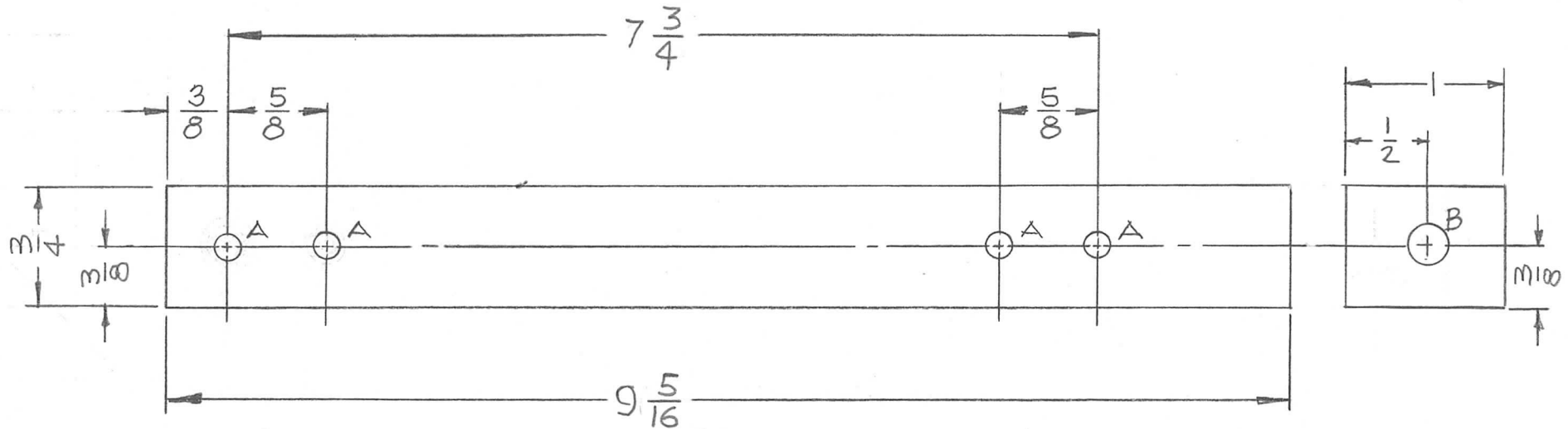
SYM DESCRIPTION DATE CH. NO. DRAFTS CHECKER ENG. APP.

Ø ORIGINAL RELEASE 4/28/66

HOLE	DESCRIPTION	REQD
A	SEE NOTE 1	4
B	SEE NOTE 2	1

REQ. PER UNIT	USED ON		
	MODEL	ASS'Y. NO.	DATE
2	AP129	A5361	4-11-66

PX980 A



NOTE 1 (MTG. IT.1)

- 1- DRILL #25 (.148) TO .488 MIN DEPTH.
- 2- 120 DEGREE C'SK .17-.20 DIA.
- 3- TAP .310 MIN DEPTH USE HELI-COIL TAP #06CPA
- 4- INSTALL ITEM#1- 3/4 TO 1-1/2 PITCH BELOW SURFACE
- 5- BREAK OFF DRIVING TANG

NOTE 2 (MTG. IT.2)

- 1- DRILL .265 TO .900 MIN. DEPTH
- 2- 120 DEGREES C'SK .30 TO .33 DIA.
- 3- TAP .680 MIN DEPTH USE HELI-COIL TAP #4CPB
- 4- INSTALL ITEM#2, 3/4 TO 1-1/2 PITCH BELOW SURFACE
- 5- BREAK OFF DRIVING TANG

REQ. ITEM	PART NO.	DESCRIPTION	SYMBOL
1	2	NT139SC4-25	INSERT, SCREW THREAD B
4	1	NT139SC06-25	INSERT, SCREW THREAD A

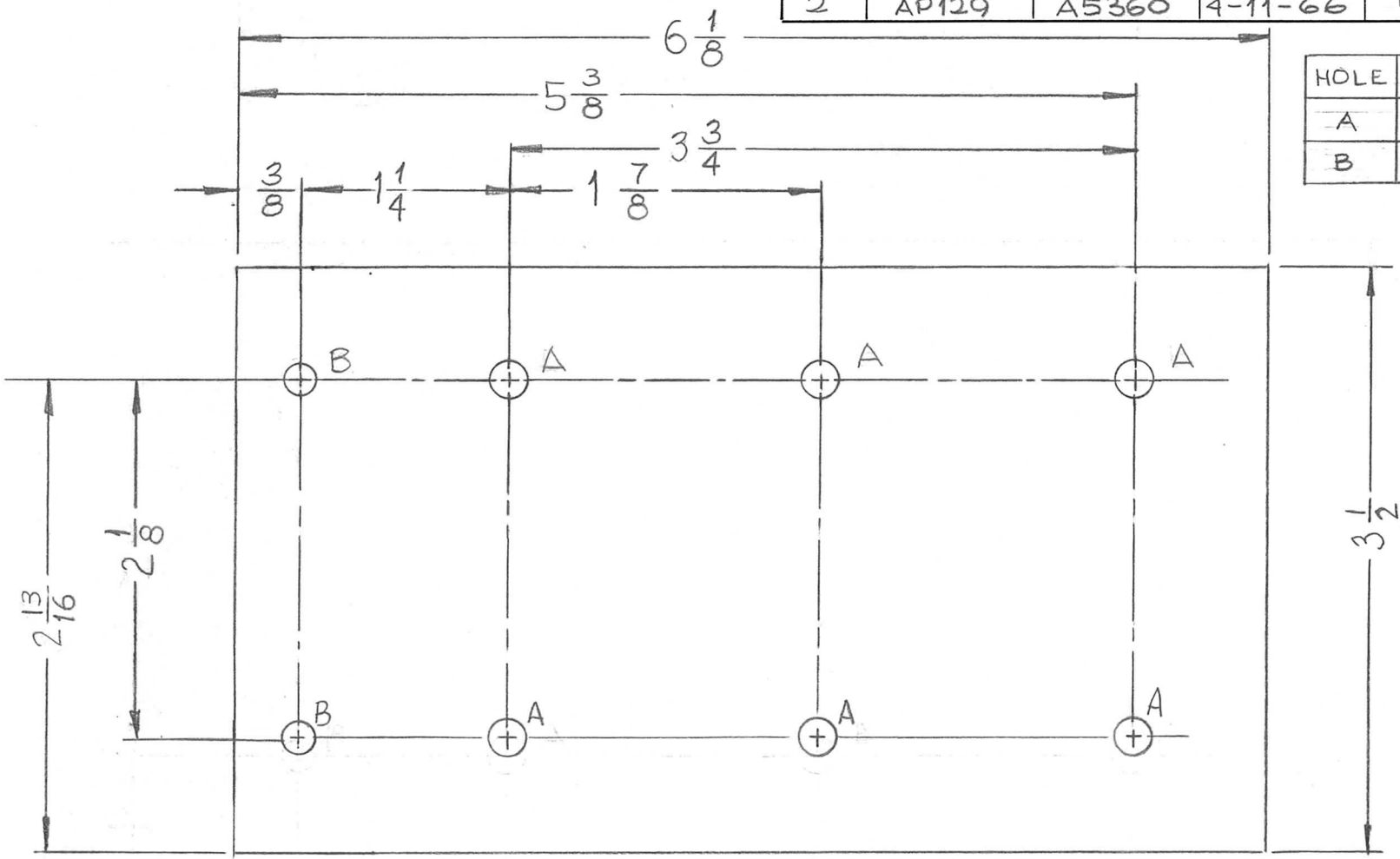
A	7 3/4 WAS 5 7/16, 9 5/16 WAS 7	9-19-67	18512	HG.	<i>[Signature]</i>	FBA
Ø	ORIGINAL RELEASE FOR PRODUCTION	2/23/67	Ø	CV		
X1	1" B" HOLE DELETED	5-24-66	X1	<i>[Signature]</i>		<i>[Signature]</i>
X	EXPER. RELEASE	4-13-66	<i>[Signature]</i>	<i>[Signature]</i>	<i>[Signature]</i>	<i>[Signature]</i>
SYM	DESCRIPTION	DATE	CH. NO.	DRAFTS	CHECKER	ENG. APP.
UNLESS OTHERWISE SPECIFIED DIMENSIONS ARE IN INCHES AND INCLUDE CHEMICALLY APPLIED OR PLATED FINISHES		SCALE 1/1				
DECIMALS .X ± .05 .XX ± .01 .XXX ± .005	TOLERANCES	FRACTIONS ± 1/64 ANGLES ± 0° 30'	CODE			

REQ. ITEM	PART NO.	DESCRIPTION	SYMBOL
1	2	NT139SC4-25	INSERT, SCREW THREAD B
4	1	NT139SC06-25	INSERT, SCREW THREAD A
BUDETTI			
THE TECHNICAL MATERIEL CORP. MAMARONECK, NEW YORK			
STOCK SIZE			
EPOXY			
MATERIAL			
G-11		<i>[Signature]</i>	<i>[Signature]</i>
TYPE & TEMPER	HEAT TREAT. SPEC.	DRAWN	CHECKED
//		<i>[Signature]</i>	<i>[Signature]</i>
FINISH & SPEC. NO.	ELEC. DES. APP.	MECH. DES. APP.	
			PX980 A

REQ. PER UNIT	USED ON		
	MODEL	ASS'Y. NO.	DATE
2	AP129	A5360	4-11-66

PX981 \emptyset

HOLE	DESCRIPTION	REQ'D
A	15/64 DIA	6
B	13/64 DIA	2

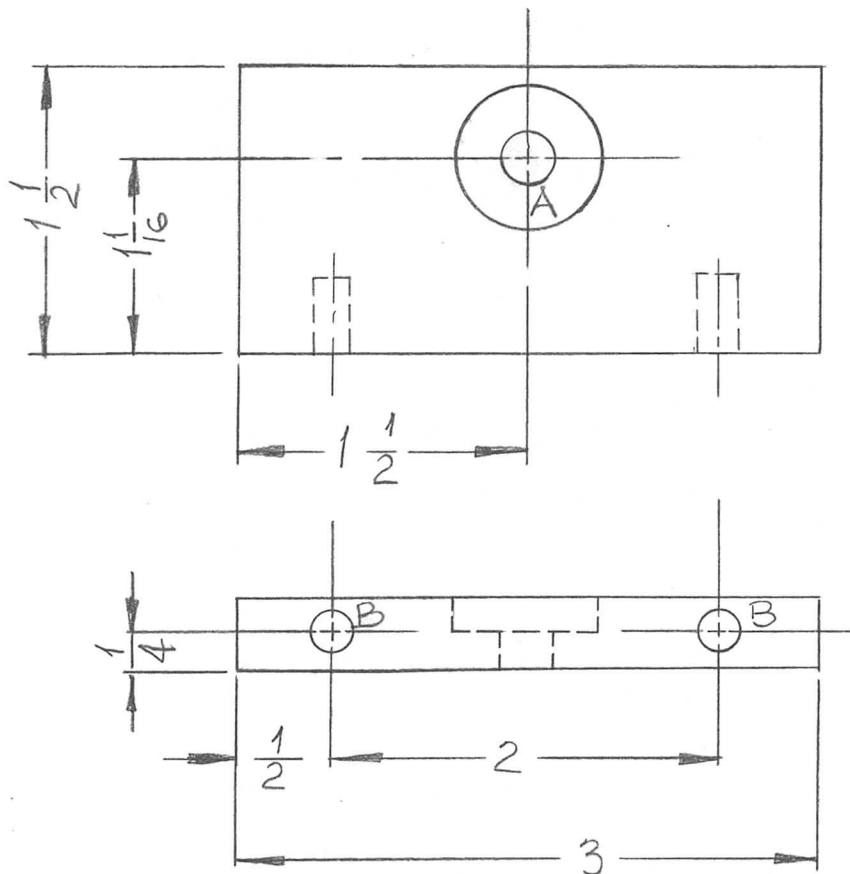


REF. LD 2092-

SYM	DESCRIPTION	DATE	CH. NO.	DRAFTS	CHECKER	ENG. APP.	REQ. ITEM	PART NO.	BUDETTI DESCRIPTION	SYMBOL	
\emptyset	ORIGINAL RELEASE FOR PRODUCTION	2/23/67	\emptyset	CV					THE TECHNICAL MATERIEL CORP. MAMARONECK, NEW YORK	\emptyset	
X ₁	3 1/2 WAS 3 7/8, HOLES RELOCATED	5-24-66	X ₁	<i>MA</i>		<i>IM</i>	1/8	STOCK SIZE			
X	EXPER. RELEASE	4/13/66	A	<i>WJW</i>	<i>QCS</i>		EPOXY		BOARD, RECT. MTG		
UNLESS OTHERWISE SPECIFIED DIMENSIONS ARE IN INCHES AND INCLUDE CHEMICALLY APPLIED OR PLATED FINISHES							SCALE				
							G-11		<i>WJW</i>	<i>QCS</i>	<i>QCS</i>
							TYPE & TEMPER	HEAT TREAT. SPEC.	DRAWN	CHECKED	FINAL APPROVAL
DECIMALS .X ± .05 .XX ± .01 .XXX ± .005							TOLERANCES		FRACTIONS ± 1/64 ANGLES ± 0° 30'		CODE
							FINISH & SPEC. NO.	ELEC. DES. APP.	MECH. DES. APP.	PX981	\emptyset

REQ. PER UNIT	USED ON			PX982	Ø
	MODEL	ASS'Y. NO.	DATE		
1	AP129	A5362	4-11-66		

HOLE	DESCRIPTION	REQ.
A	DR. 9/32 DIA. C'BORE 3/4 DIA. X 1/4 DP.	1
B	SEE NOTE	2



NOTE (MTG. IT. 1 IN "B" HOLES)

- 1 DRILL 13/64 (.203) TO .552 MIN DEPTH
- 2 120 DEGREES C'SNK .22-.25 DIA.
- 3 TAP .410 MIN DEPTH USE HELICOIL TAP #3FPB
- 4 INSTALL ITEM#1, 3/4 TO 1-1/2 PITCH BELOW SURFACE
- 5 BREAK OFF DRIVING TANG

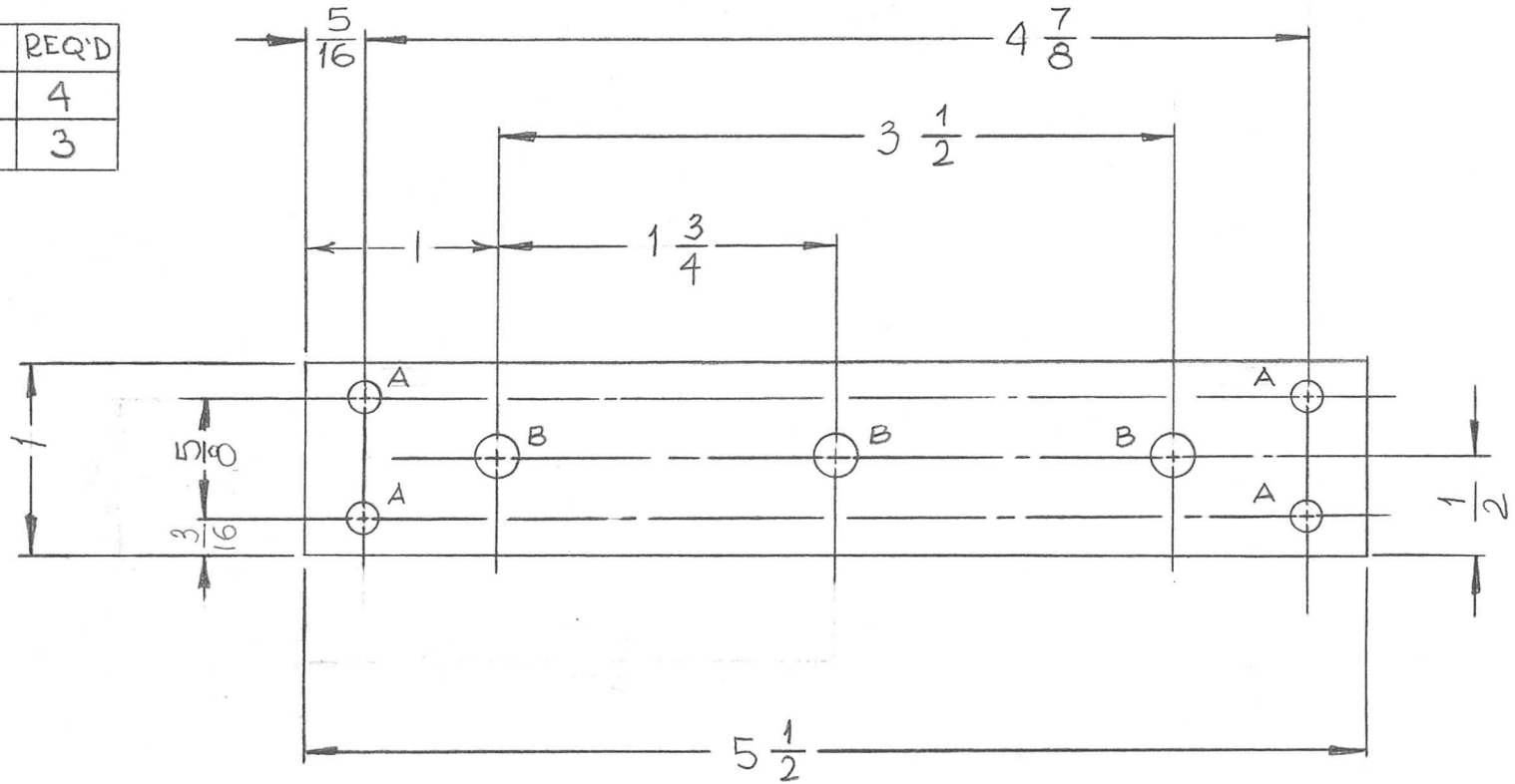
2	1	NT139SF1-25	INSERT, SCREW THREAD	B
REQ. ITEM	PART NO.	BUDETTI DESCRIPTION		SYMBOL
	1/2	THE TECHNICAL MATERIEL CORP. MAMARONECK, NEW YORK		
	EPOXY	BOARD CONTACT		
MATERIAL		G-11	u/w	Ø/B
TYPE & TEMPER	HEAT TREAT. SPEC.	DRAWN	CHECKED	FINAL APPROVAL
NATURAL				PX982 Ø
FINISH & SPEC. NO.		ELEC. DES. APP.	MECH. DES. APP.	

Ø	ORIGINAL RELEASE FOR PRODUCTION	2/23/67	Ø	CV		
X ₁	"A" WAS 9/32, 1/16 WAS 1	5-24-66	X ₁	1/16		1/16
X	EXPER. RELEASE	4-13-66	M	u/w	Ø/B	
SYM	DESCRIPTION	DATE	CH. NO.	DRAFTS	CHECKER	ENG. APP.
UNLESS OTHERWISE SPECIFIED DIMENSIONS ARE IN INCHES AND INCLUDE CHEMICALLY APPLIED OR PLATED FINISHES		SCALE 1:1				
DECIMALS .X ± .05 .XX ± .01 .XXX ± .005	TOLERANCES	FRACTIONS ± 1/64 ANGLES ± 0° 30'	CODE			

REQ. PER UNIT	USED ON		
	MODEL	ASS'Y. NO.	DATE
2	AP129	A5361	4-11-66

PX983 \emptyset

HOLE	DESCRIPTION	REQ'D
A	11/64 DIA	4
B	9/32 DIA	3



SYM	DESCRIPTION	DATE	CH. NO.	DRAFTS	CHECKER	ENG. APP.	REQ. ITEM	PART NO.	BUDETTI DESCRIPTION	SYMBOL
\emptyset	ORIGINAL RELEASE FOR PRODUCTION	2/23/67	\emptyset	CV			$\frac{1}{4}$		THE TECHNICAL MATERIEL CORP. MAMARONECK, NEW YORK	
X	EXPER. RELEASE	4/13/66	AA	upw	JCS	M	EPOXY		BOARD, CLIP MTG.	
							MATERIAL			
							G-11		upw	JCS
							TYPE & TEMPER	HEAT TREAT. SPEC.	DRAWN	CHECKED
							FINISH & SPEC. NO.		ELEC. DES. APP.	MECH. DES. APP.
										PX983 \emptyset

UNLESS OTHERWISE SPECIFIED
DIMENSIONS ARE IN INCHES AND INCLUDE
CHEMICALLY APPLIED OR PLATED FINISHES

DECIMALS
.X \pm .05
.XX \pm .01
.XXX \pm .005

FRACTIONS
 \pm 1/64
ANGLES
 \pm 0° 30'

TOLERANCES

SCALE
1:1

CODE

TYPE & TEMPER
G-11

HEAT TREAT. SPEC.

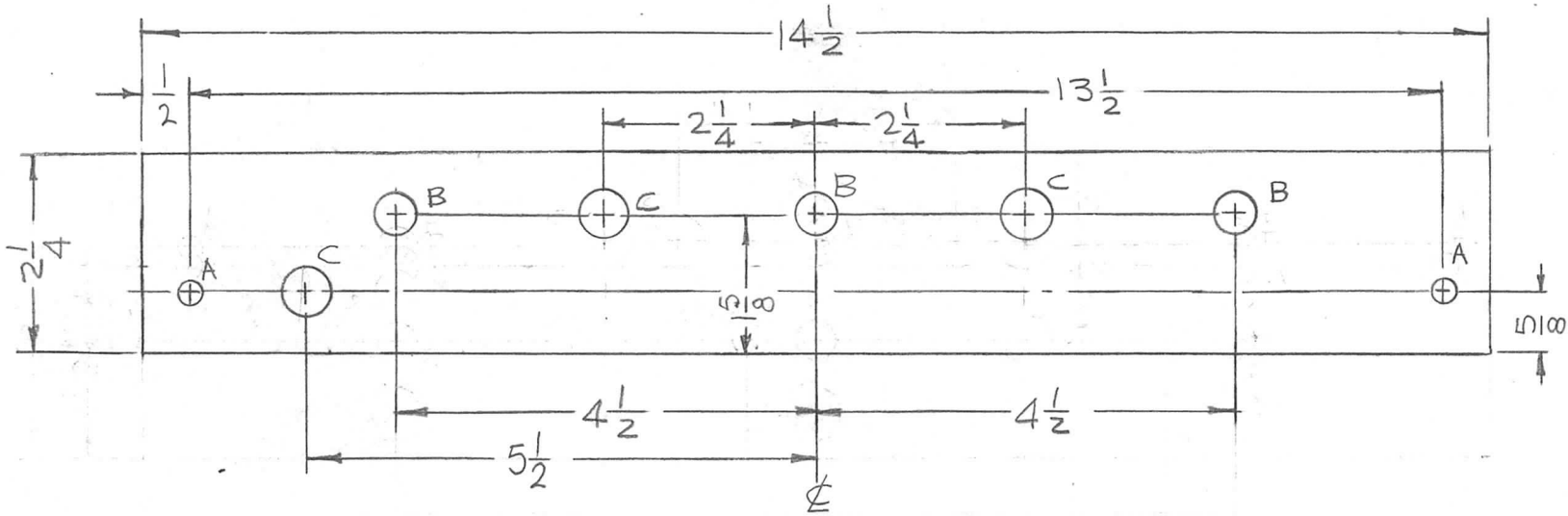
FINISH & SPEC. NO.

DRAWN
upw

CHECKED
JCS

FINAL APPROVAL
JCS

REQ. PER UNIT	USED ON			PX984	Ø
	MODEL	ASS'Y. NO.	DATE		
1	KIT-257		4-19-66		

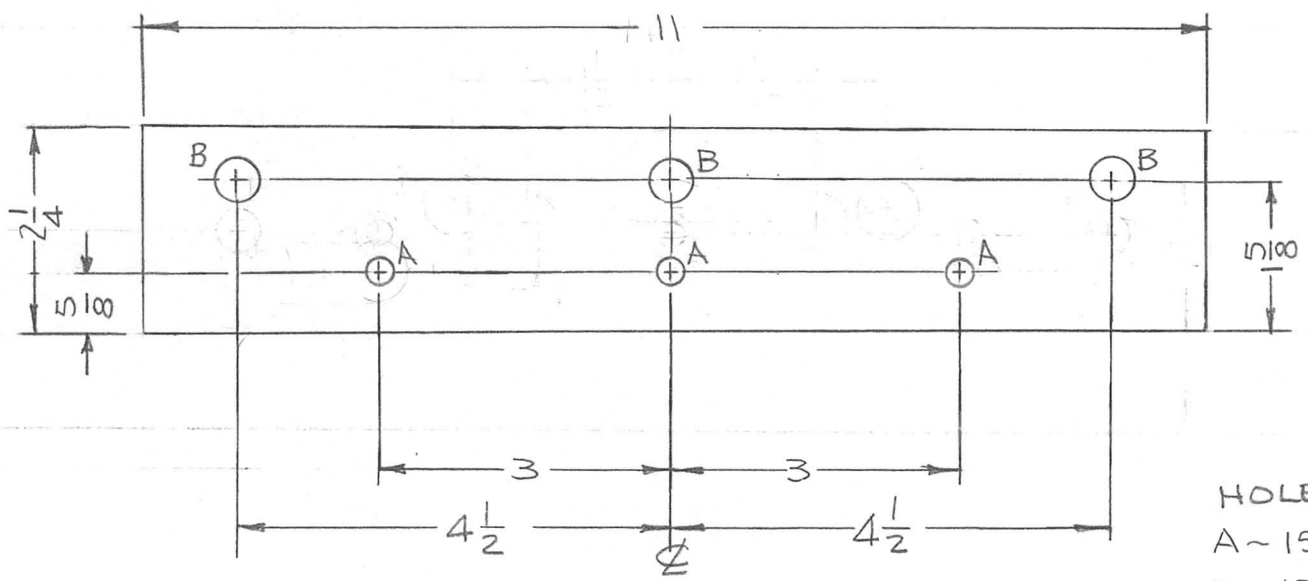


HOLES

- A - 13/64 DIA. (2 REQ.)
- B - 13/32 DIA. (3 REQ.)
- C - 1/2 DIA. (3 REQ.)

							REQ. ITEM	PART NO.	F. BUDETTI	DESCRIPTION	SYMBOL
							3/32 THICK		THE TECHNICAL MATERIEL CORP.		
							STOCK SIZE		MAMARONECK, NEW YORK		
							EPOXY		BOARD, MTG. CAPACITORS		
							MATERIAL				
Ø	ORIGINAL RELEASE FOR PRODUCTION	7-12-66	Ø	HGA			G11		<i>[Signature]</i>	<i>[Signature]</i>	<i>[Signature]</i>
SYM	DESCRIPTION	DATE	CH. NO.	DRAFTS	CHECKER	ENG. APP.	TYPE & TEMPER	HEAT TREAT. SPEC.	DRAWN	CHECKED	FINAL APPROVAL
UNLESS OTHERWISE SPECIFIED DIMENSIONS ARE IN INCHES AND INCLUDE CHEMICALLY APPLIED OR PLATED FINISHES						SCALE	1/2:1				
DECIMALS		FRACTIONS	CODE								
.X ± .05	TOLERANCES	± 1/64	A								
.XX ± .01		ANGLES									
.XXX ± .005		± 0° 30'									
							SI13 FUNGUS PROOFING		<i>[Signature]</i> 7-11-66	<i>[Signature]</i>	PX984
							FINISH & SPEC. NO.		ELEC. DES. APP.	MECH. DES. APP.	Ø

REQ. PER UNIT	USED ON			PX 986	∅
	MODEL	ASS'Y. NO.	DATE		
1	KIT-257		5-3-66		



HOLES:
 A ~ 15/64 DIA. (3 REQ.)
 B ~ 13/32 DIA. (2 REQ.)

REF. LD 2074

							REQ. ITEM	PART NO.	F. BUDETTI	DESCRIPTION	SYMBOL	
							3/32 THICK		THE TECHNICAL MATERIEL CORP.			
							STOCK SIZE		MAMARONECK. NEW YORK			
							EPOXY		BOARD, MTG CAPACITORS			
							MATERIAL					
∅	ORIGINAL RELEASE FOR PRODUCTION	7.11.66	wt	WHD			G11		MS	CB	D.B. / [Signature]	
SYM	DESCRIPTION	DATE	CH. NO.	DRAFTS	CHECKER	ENG. APP.	TYPE & TEMPER	HEAT TREAT. SPEC.	DRAWN	CHECKED	FINAL APPROVAL	
UNLESS OTHERWISE SPECIFIED DIMENSIONS ARE IN INCHES AND INCLUDE CHEMICALLY APPLIED OR PLATED FINISHES		SCALE 1/2						S113 FUNGUS PROOF	00 7-11-66			PX 986
DECIMALS	TOLERANCES	FRACTIONS	CODE									
.X ± .05		± 1/64	A									
.XX ± .01		ANGLES ± 0° 30'										
.XXX ± .005												
							FINISH & SPEC. NO.	ELEC. DES. APP.	MECH. DES. APP.			

REQ. PER UNIT	USED ON			PX987	Ø
	MODEL	ASS'Y. NO.	DATE		
1 EA	KIT-258		4-28-66		

HOLES:

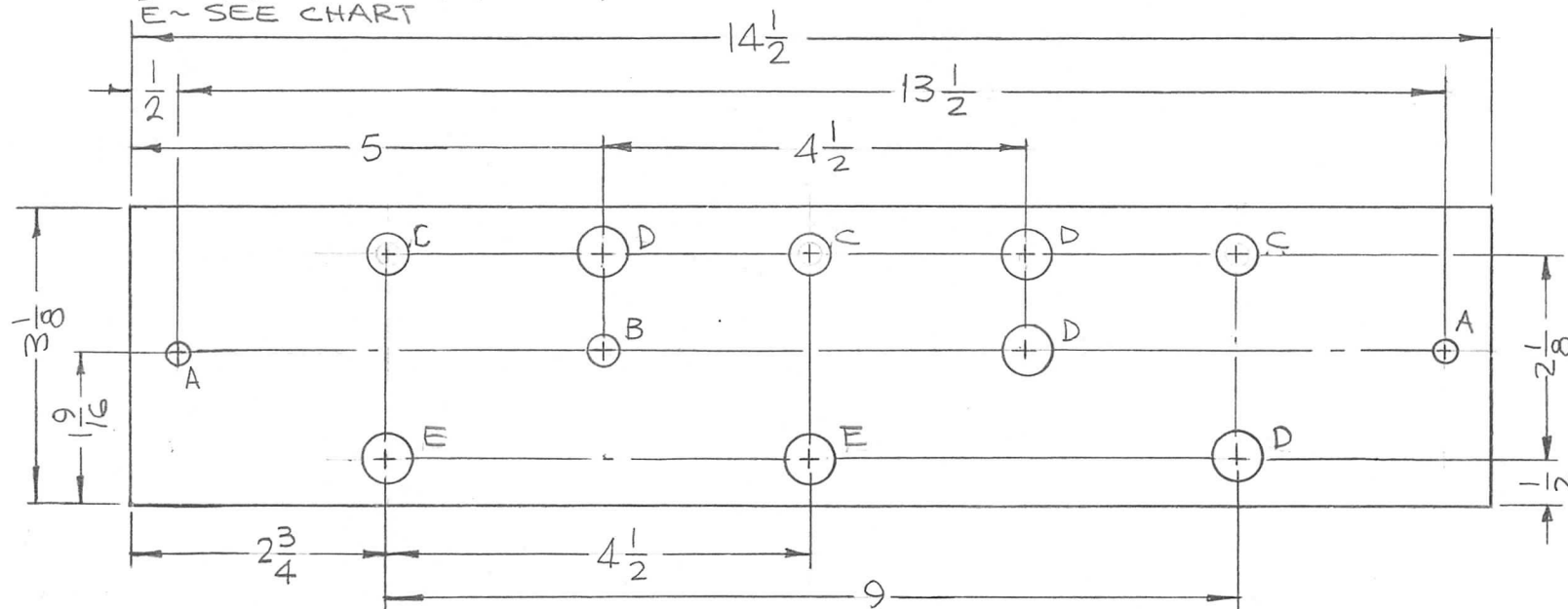
A ~ 13/64 DIA. (2 REQ.)

B ~ SEE CHART

C ~ 13/32 DIA. (3 REQ.)

D ~ 5/8 DIA. (4 REQ.)

E ~ SEE CHART



REF. LD2082-

TMC P/N	B HOLE	E HOLES
PX987-1	NONE	5/8 DIA.
PX987-2	13/64 DIA.	NONE

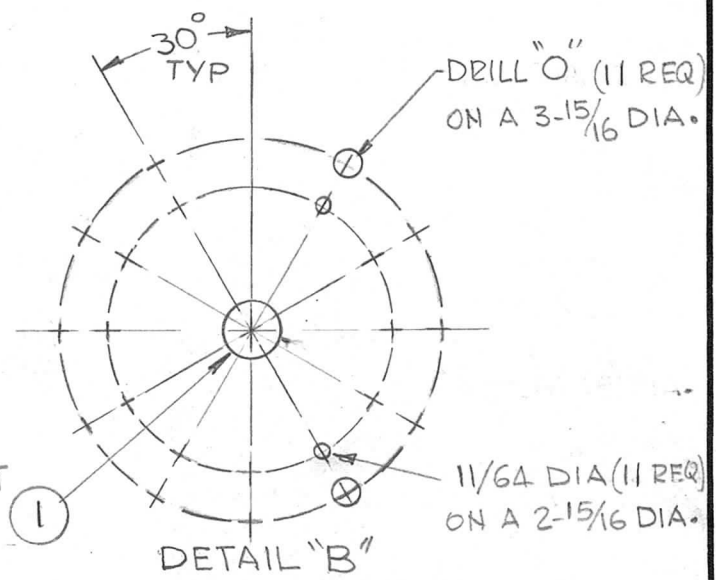
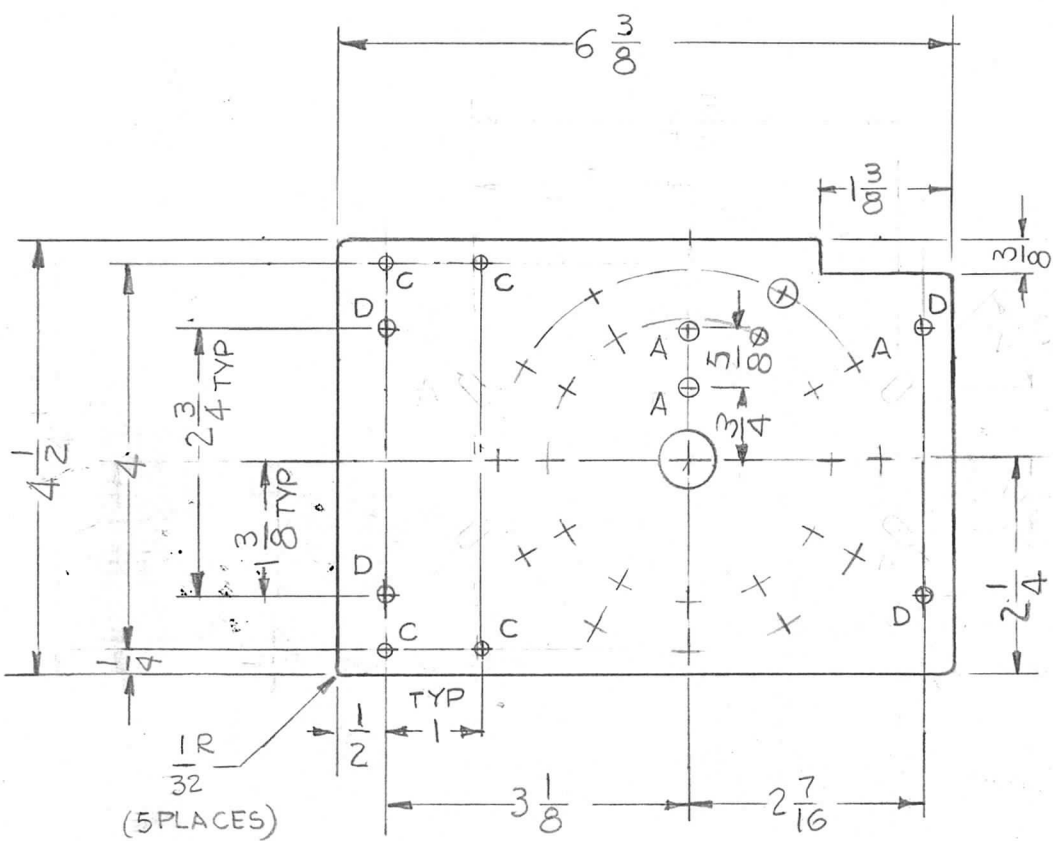
							REQ. ITEM	PART NO.	F. BUDETTI DESCRIPTION			SYMBOL
							3/32 THICK		THE TECHNICAL MATERIEL CORP.			
							STOCK SIZE		MAMARONECK. NEW YORK			
Ø	ORIGINAL RELEASE FOR PRODUCTION	7.11.66	Ø	440			EPOXY		BOARD MTG. CAPACITORS			
SYM	DESCRIPTION	DATE	CH. NO.	DRAFTS	CHECKER	ENG. APP.	MATERIAL					
UNLESS OTHERWISE SPECIFIED DIMENSIONS ARE IN INCHES AND INCLUDE CHEMICALLY APPLIED OR PLATED FINISHES		SCALE		1/2			G11		<i>MB</i>	<i>QCS</i>	<i>Q.B. [Signature]</i>	
							TYPE & TEMPER	HEAT TREAT. SPEC.	DRAWN	CHECKED	FINAL APPROVAL	
DECIMALS X ± .05 .XX ± .01 XXX ± .005		FRACTIONS ± 1/64 ANGLES ± 0° 30'		CODE A			S113 FUNGUS PROOFING		00 7-11-66	<i>re</i>	PX987	Ø
							FINISH & SPEC. NO.		ELEC. DES. APP.	MECH. DES. APP.		

m.l. RDD

REPRODUCTION NO. 4404 43245

REQ. PER UNIT	USED ON			PX 991	Ø
	MODEL	ASS'Y. NO.	DATE		
1	TLAA-2.5K	AS 128	6-9-66		

HOLE	DESCRIPTION	REQ.
A	11/64 DIA.	2
B	SEE DETAIL	1
C	11/64 DIA	4
D	13/64 DIA	4



REF. LD2138

1	1	BB120-1	BEARING, RACE	B
REQ. ITEM		PART NO.	DESCRIPTION	SYMBOL
		1/4 THK	THE TECHNICAL MATERIEL CORP. MAMARONECK, NEW YORK	
		STOCK SIZE	WAFER, SWITCH, L SECTION	
		MEEPOXY		
		MATERIAL		
		G-11	G.DL 6-9-66	<i>[Signature]</i>
		TYPE & TEMPER	CHECKED	FINAL APPROVAL
		NONE	<i>[Signature]</i>	<i>[Signature]</i>
		FINISH & SPEC. NO.	ELEC. DES. APP.	MECH. DES. APP.
				PX 991 Ø

Ø	ORIGINAL RELEASE FOR PRODUCTION	11-18-66	Ø	RME		
SYM	DESCRIPTION	DATE	CH. NO.	DRAFTS	CHECKER	ENG. APP.
UNLESS OTHERWISE SPECIFIED DIMENSIONS ARE IN INCHES AND INCLUDE CHEMICALLY APPLIED OR PLATED FINISHES		SCALE 1:2				
DECIMALS .X ± .05 .XX ± .01 .XXX ± .005	TOLERANCES	FRACTIONS ± 1/64 ANGLES ± 0° 30'	CODE A			

DECIMALS
X ± .05
XX ± .01
XXX ± .005
FRACTIONS
± 1/64
± 1/32
± 3/64
ANGLES
± 0° 30'

UNLESS OTHERWISE SPECIFIED
DIMENSIONS ARE IN INCHES AND INCLUDE
CHEMICALLY APPLIED OR PLATED FINISHES

SYM	DESCRIPTION	DATE	CH. NO.	DRAFTS	CHECKER	ENG. APP.
Ø	ORIGINAL RELEASE FOR PRODUCTION	11/8/66	Ø	RME		

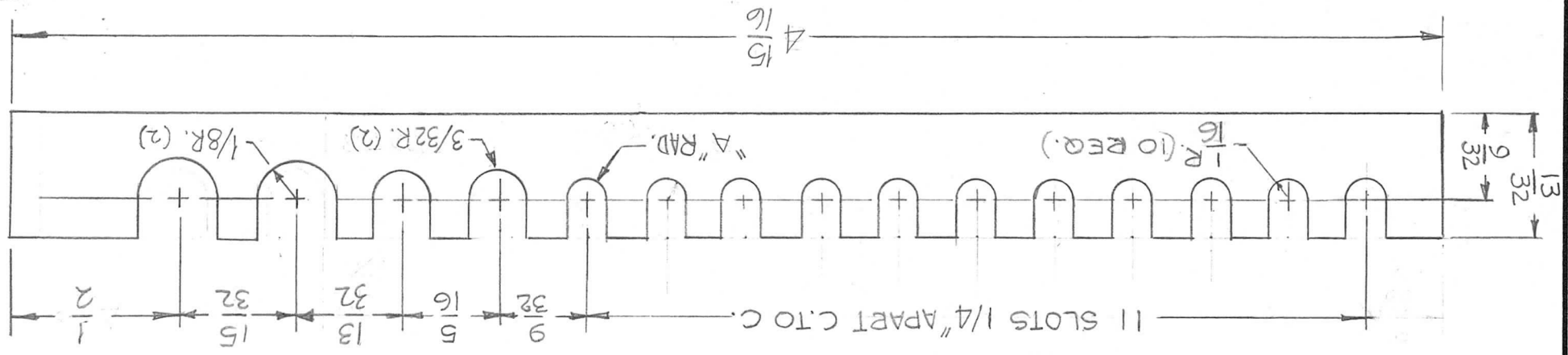
SCALE
2:1

REQ. ITEM	PART NO.	DESCRIPTION	SYMBOL
		BUDETTI	

FINISH & SPEC. NO.	ELEC. DES. APP.	MECH. DES. APP.
	00	00

TYPE & TEMPER	HEAT TREAT. SPEC.	DRAWN	CHECKED	FINAL APPROVAL
TFE	-	G.D.L. 6-9-66		

REVISION	DESCRIPTION	DATE
Ø	PX992	6-9-66



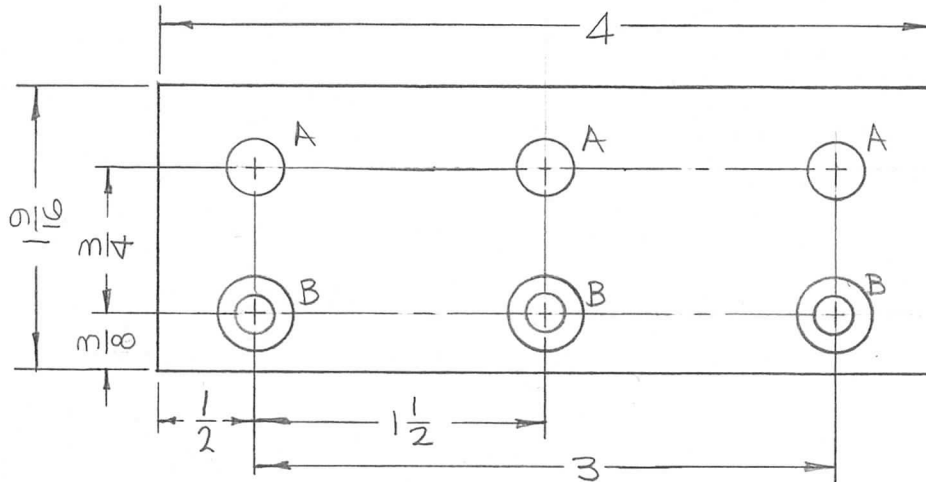
TMC P/No	DIMENSION
PX992-1	3/32 R.
PX992-2	1/16 R.

REQ. PER UNIT	MODEL	ASSY. NO.	DATE
ZEA	TLAA-2.5K	AS1Z8	6-9-66

USED ON	DATE
PX992	6-9-66

Ø




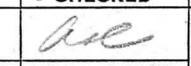
REQ. PER UNIT	USED ON			PX 994 \emptyset
	MODEL	ASS'Y. NO.	DATE	
2	RAK110-2	A5586	7-5-66	



HOLES

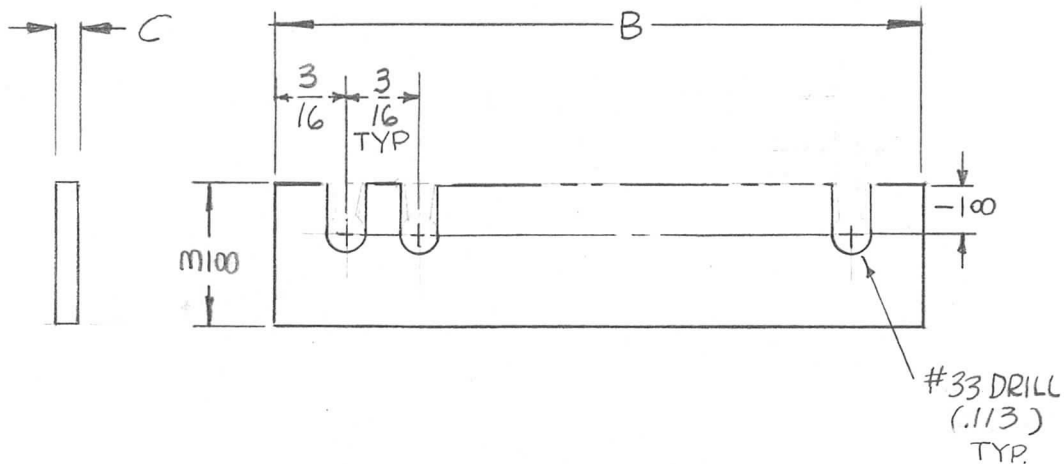
A - 9/32 DIA.

B - DR. 15/64 DIA. C'BORE
1/2 DIA. X 1/4 DEEP

SYM	DESCRIPTION	DATE	CH. NO.	DRAFTS	CHECKER	ENG. APP.	REQ. ITEM	PART NO.	F. BUDETTI DESCRIPTION	SYMBOL	
\emptyset	ORIGINAL RELEASE FOR PRODUCTION	3.1.67	4	WFD			3/8 THICK STOCK SIZE		THE TECHNICAL MATERIEL CORP. MAMARONECK. NEW YORK		
X	EXP. RELEASE	7-5-66	X	WFD		W	PHENOLIC MATERIAL		BOARD, SUPPORT FILTER BD.		
	UNLESS OTHERWISE SPECIFIED DIMENSIONS ARE IN INCHES AND INCLUDE CHEMICALLY APPLIED OR PLATED FINISHES	SCALE 1:1						XXXP		  	
	DECIMALS .X \pm .05 .XX \pm .01 .XXX \pm .005	TOLERANCES	FRACTIONS \pm 1/64 ANGLES \pm 0° 30'	CODE A			SI13 FUNGUS PROOF			PX 994 \emptyset	
							FINISH & SPEC. NO.	ELEC. DES. APP.	MECH. DES. APP.		

STANDARD DWG

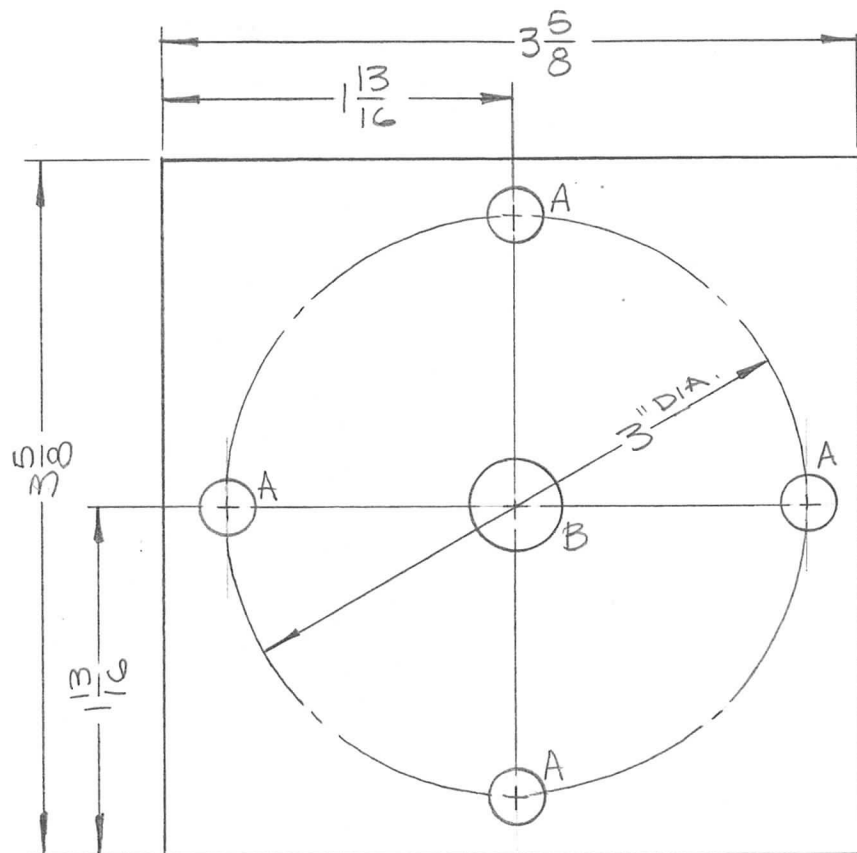
REQ. PER UNIT	USED ON			PX 996	A
	MODEL	ASS'Y. NO.	DATE		
1	TFP-2.5K		8-25-66		



TMC P/N	# OF SLOTS	B	C	USED ON QTY
PX 996-1	8	1-11/16	1/8	2 TFP 2.5K
PX 996-2	9	1-7/8	1/8	1 TFP 2.5K
PX 996-3	11	2-1/4	1/8	2 TFP 2.5K
PX 996-4	12	2-7/16	1/8	1 TFP 2.5K
PX 996-5	14	2-13/16	1/8	2 TFP 2.5K
PX 996-6	15	3	1/8	6 TFP 1K
PX 996-7	16	3 3/16	1/8	6 TFP 1K

SYM	DESCRIPTION	DATE	CH. NO.	DRAFTS	CHECKER	ENG. APP.	REQ. ITEM	PART NO.	F. BUDETTI DESCRIPTION	SYMBOL
A	ADD PX 996-7	4/15/71	20813	GE	W	P.E.B.			THE TECHNICAL MATERIEL CORP. MAMARONECK, NEW YORK STOCK SIZE TEFLON MATERIAL TFE TYPE & TEMPER HEAT TREAT. SPEC. FINISH & SPEC. NO.	SPACER, COIL DRAWN CHECKED FINAL APPROVAL PX 996 A
Ø	ORIGINAL RELEASE FOR PRODUCTION	5/22/69		W.						
X	EXP. RELEASE	8-25-66	X							
UNLESS OTHERWISE SPECIFIED DIMENSIONS ARE IN INCHES AND INCLUDE CHEMICALLY APPLIED OR PLATED FINISHES		SCALE								
DECIMALS .X ± .05 .XX ± .01 .XXX ± .005		FRACTIONS ± 1/64 ANGLES ± 0° 30'		CODE A			S401-451 S401- S481-			

REQ. PER UNIT	USED ON			PX997	Ø
	MODEL	ASS'Y. NO.	DATE		
1	LPFA-10K		9-14-66		



HOLES:
 A - 9-32 DIA. (4 REQ.)
 B - 460 DIA. (1 REQ.)

SYM	DESCRIPTION	DATE	CH. NO.	DRAFTS	CHECKER	ENG. APP.	REQ. ITEM	PART NO.	F. BUDETTI DESCRIPTION	SYMBOL
Ø	ORIGINAL RELEASE FOR PRODUCTION	1/11/67	Ø	CV				1/4 THICK	THE TECHNICAL MATERIEL CORP. MAMARONECK, NEW YORK	
X	EXP. RELEASE	9-13-66	X					STOCK SIZE		
								SILICONE GLASS	SPACER, INSULATOR	
								MATERIAL		
								G-7		
								TYPE & TEMPER	HEAT TREAT. SPEC.	
								NATURAL		
								FINISH & SPEC. NO.	ELEC. DES. APP.	MECH. DES. APP.
										PX997

UNLESS OTHERWISE SPECIFIED
 DIMENSIONS ARE IN INCHES AND INCLUDE
 CHEMICALLY APPLIED OR PLATED FINISHES

DECIMALS
 .X ± .05
 .XX ± .01
 .XXX ± .005

FRACTIONS
 ± 1/64
 ANGLES
 ± 0° 30'

TOLERANCES

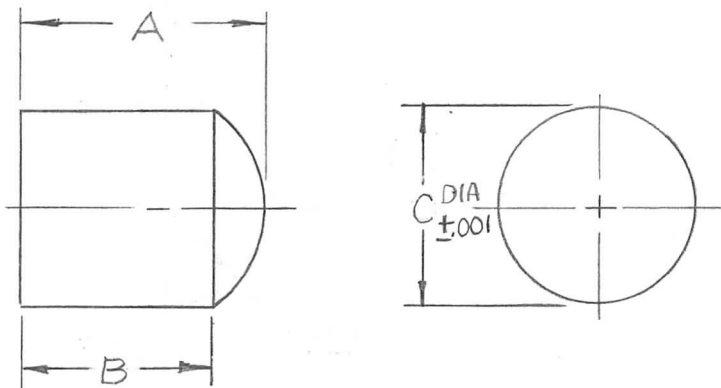
SCALE 1:1

CODE A

TMC P/N	A	B	C
PX 998	5/16	1/4	.125
PX 998-2	5/8	9/16	.187

REQ. PER UNIT	USED ON		
	MODEL	ASS'Y. NO.	DATE
9	TLAA-25K	A5492	9-14-66

PX998 A



NOTE:
POLISH SMOOTH

REF. MS4964

A	ADDED TMC P/N CHART	5.9.68	18910	HS	1/4	EFM	REQ. ITEM	PART NO.	F. BUDETTI	DESCRIPTION	SYMBOL	
Ø	ORIGINAL RELEASE FOR PRODUCTION	11.18.66	Ø	RME			CENTERLESS GROUND RODS		THE TECHNICAL MATERIEL CORP. MAMARONECK, NEW YORK			
X1	MAT'L W/ ±.0005	9-27-66	X1	RA		BC	STOCK SIZE		ILLUMINATOR, BAND			
X	EXP. RELEASE	9-13-66	X	RA		CB	REXOLITE					
SYM	DESCRIPTION	DATE	CH. NO.	DRAFTS	CHECKER	ENG. APP.	MATERIAL					
UNLESS OTHERWISE SPECIFIED DIMENSIONS ARE IN INCHES AND INCLUDE CHEMICALLY APPLIED OR PLATED FINISHES		SCALE		4:1			#1422		MA	JCB	OKP	
DECIMALS .X ± .05 .XX ± .01 .XXX ± .005		FRACTIONS ± 1/64 ANGLES ± 0° 30'		TOLERANCES		CODE A	TYPE & TEMPER	HEAT TREAT. SPEC.	DRAWN	CHECKED	FINAL APPROVAL	
							FINISH & SPEC. NO.	ELEC. DES. APP.	MECH. DES. APP.	PX 998	A	

