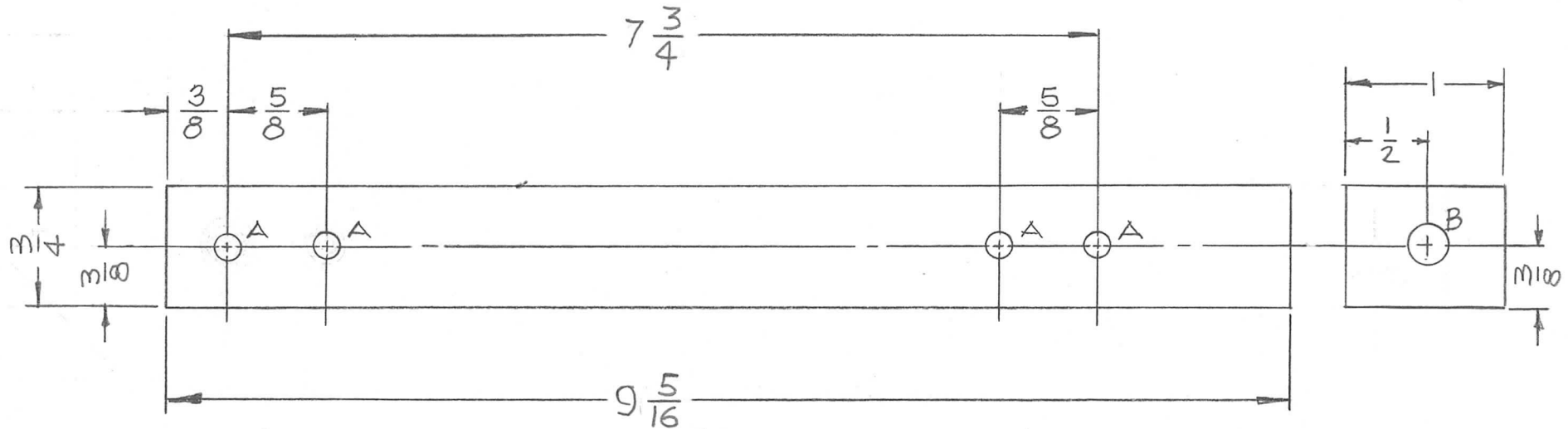


HOLE	DESCRIPTION	REQD
A	SEE NOTE 1	4
B	SEE NOTE 2	1

REQ. PER UNIT	USED ON		
	MODEL	ASS'Y. NO.	DATE
2	AP129	A5361	4-11-66

PX980 A



NOTE 1 (MTG. IT.1)

- 1- DRILL #25 (.148) TO .488 MIN DEPTH.
- 2- 120 DEGREE C'SK .17-.20 DIA.
- 3- TAP .310 MIN DEPTH USE HELI-COIL TAP #06CPA
- 4- INSTALL ITEM#1- 3/4 TO 1-1/2 PITCH BELOW SURFACE
- 5- BREAK OFF DRIVING TANG

NOTE 2 (MTG. IT.2)

- 1- DRILL .265 TO .900 MIN. DEPTH
- 2- 120 DEGREES C'SK .30 TO .33 DIA.
- 3- TAP .680 MIN DEPTH USE HELI-COIL TAP #4CPB
- 4- INSTALL ITEM#2, 3/4 TO 1-1/2 PITCH BELOW SURFACE
- 5- BREAK OFF DRIVING TANG

REQ. ITEM	PART NO.	DESCRIPTION	SYMBOL
1	2	NT139SC4-25	INSERT, SCREW THREAD B
4	1	NT139SC06-25	INSERT, SCREW THREAD A

A	7 3/4 WAS 5 7/16, 9 5/16 WAS 7	9-19-67	18512	HG.	FBH	
Ø	ORIGINAL RELEASE FOR PRODUCTION	2/23/67	Ø	CV		
X1	1" B" HOLE DELETED	5-24-66	X1			
X	EXPER. RELEASE	4-13-66		ufw	QCS	
SYM	DESCRIPTION	DATE	CH. NO.	DRAFTS	CHECKER	ENG. APP.
UNLESS OTHERWISE SPECIFIED DIMENSIONS ARE IN INCHES AND INCLUDE CHEMICALLY APPLIED OR PLATED FINISHES		SCALE 1/1				
DECIMALS .X ± .05 .XX ± .01 .XXX ± .005	TOLERANCES	FRACTIONS ± 1/64 ANGLES ± 0° 30'	CODE			

REQ. ITEM	PART NO.	DESCRIPTION	SYMBOL
1	2	NT139SC4-25	INSERT, SCREW THREAD B
4	1	NT139SC06-25	INSERT, SCREW THREAD A
STOCK SIZE		THE TECHNICAL MATERIEL CORP. MAMARONECK, NEW YORK	
EPOXY		SUPPORT RES MT.	
MATERIAL			
G-11		ufw	QCS
TYPE & TEMPER	HEAT TREAT. SPEC.	DRAWN	CHECKED
//			
FINISH & SPEC. NO.	ELEC. DES. APP.	MECH. DES. APP.	
			PX980 A