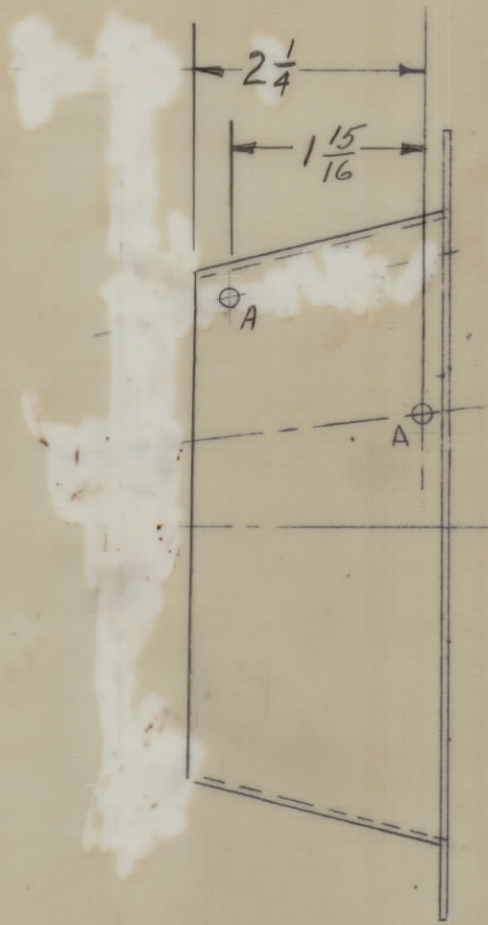
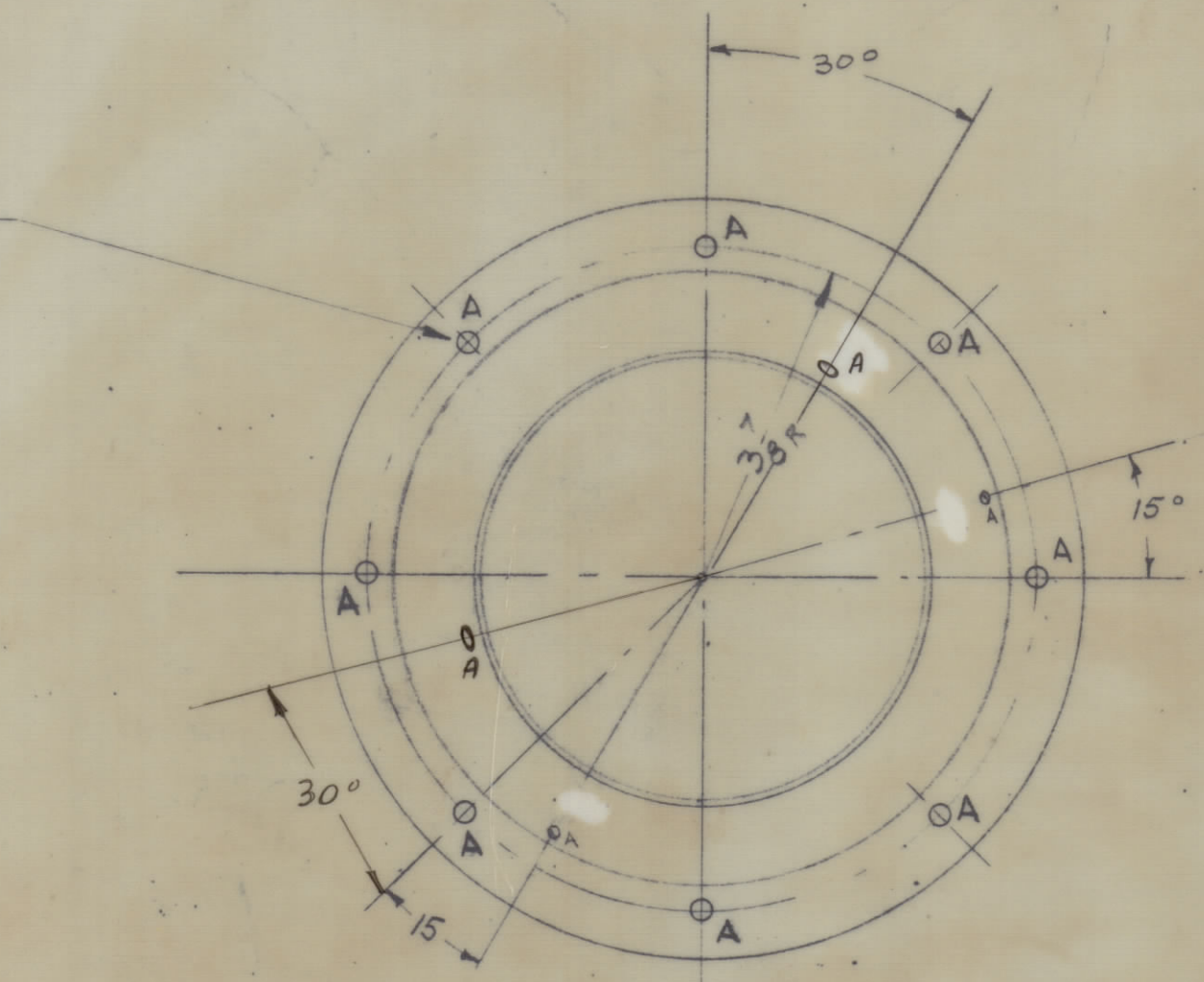


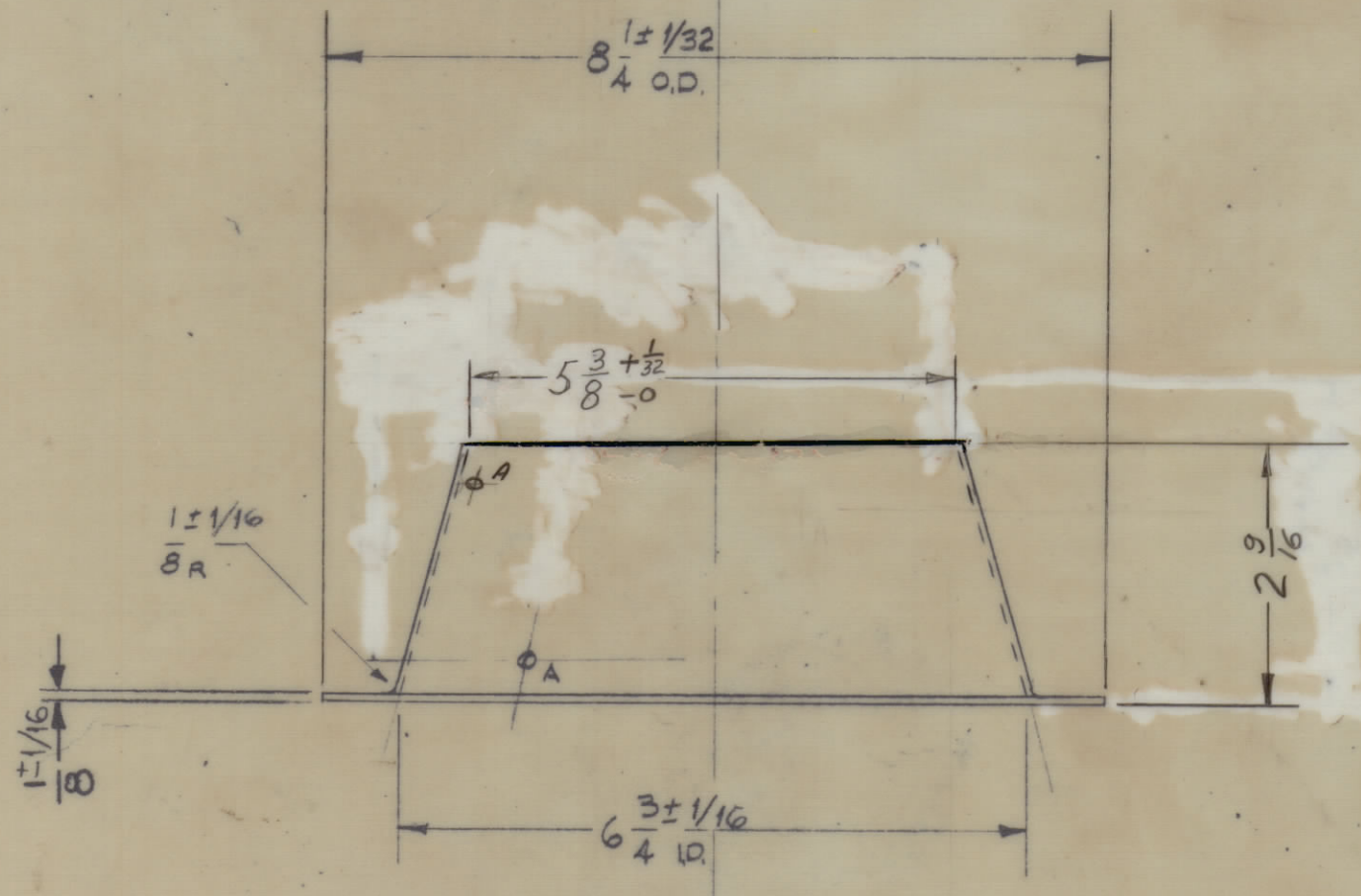
IF IT IS FOUND DESIRABLE TO CHANGE ANY TOLERANCE OR OTHER DETAIL SPECIFIED ON THIS DRAWING NOTIFY THE PURCHASER PROMPTLY.

MAXIMUM ALLOWABLE TOLERANCES HAVE BEEN DETERMINED AND DEVIATIONS WILL BE CAUSE FOR REJECTION. REMOVE ALL BURRS AND SHARP EDGES.

8 "A" HOLES - EQUALLY SPACED 45°, ON 3/8" R



A - .156 ± .020 12 REQ'D



PX 969 ∅

- NOTE: 1. CHIMNEY FOR TUBE
 2. MATES WITH T5134 SOCKET
 3. MATERIAL: POLYESTER RESIN (WHITE) PER MIL-R-7575. FIBER GLASS PER MIL-G-1140C.
 4. MFG. REF: S401-23 P/N Y415 MOD. AS SHOWN.
 5. MAX. TEMPERATURE: 125°C

ISSUE	ORIGINAL RELEASE	DATE	CH. NO.	DRAFTS	CHECKER	ENG. APP.
		2/2/66				
TOLERANCES						
SCALE: S401-23						
DRILL PUNCH COMMERCIAL STOCK SIZES AND MANUFACTURERS TOLERANCES ARE NOT INCLUDED.						
ALL OTHERS	DEC. DIM. ± .005					
	FRAC. DIM. ± 1/64					
	ANGULAR DIM. ± 1°					

1	KIT 180	RF DECK		
REQ. PER UNIT	MODEL	PROJECT NO.	ASSY. NO.	DATE
	USED ON			

REQ. ITEM	PART NO.	DESCRIPTION	SYMBOL
		THE TECHNICAL MATERIEL CORP. MAMARONECK, NEW YORK	
SEE NOTE 3		AIR DUCT CONE	
MATERIAL		WEIGHT PER PC.	
TYPE & TEMPER			
DRAWN		ELEC. DES. APP.	MECH. DES. APP.
CHECKED		FINAL APPROVAL	
HEAT TREAT. SPEC.			
FINISH & SPEC. NO.		PX 969 ∅	