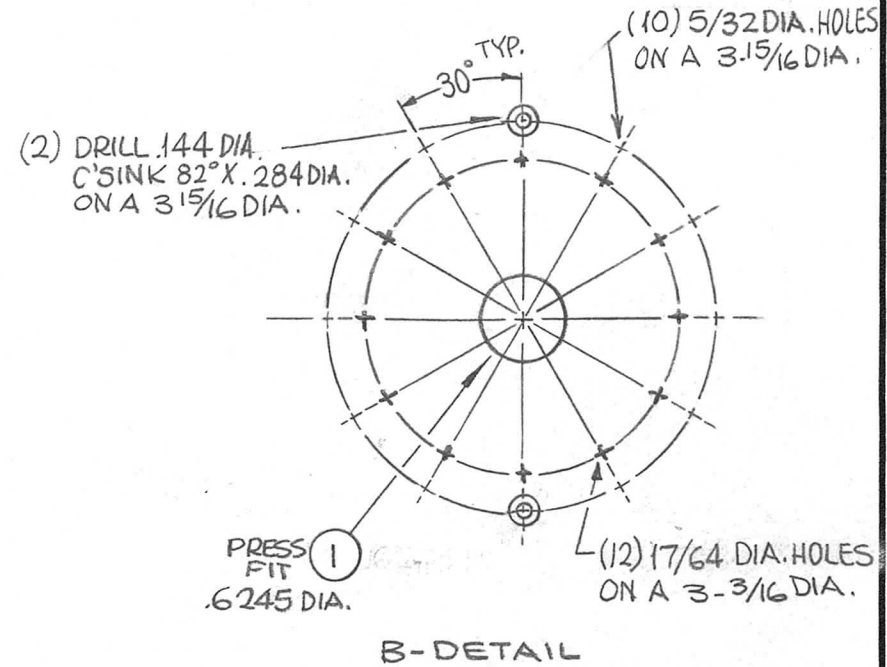
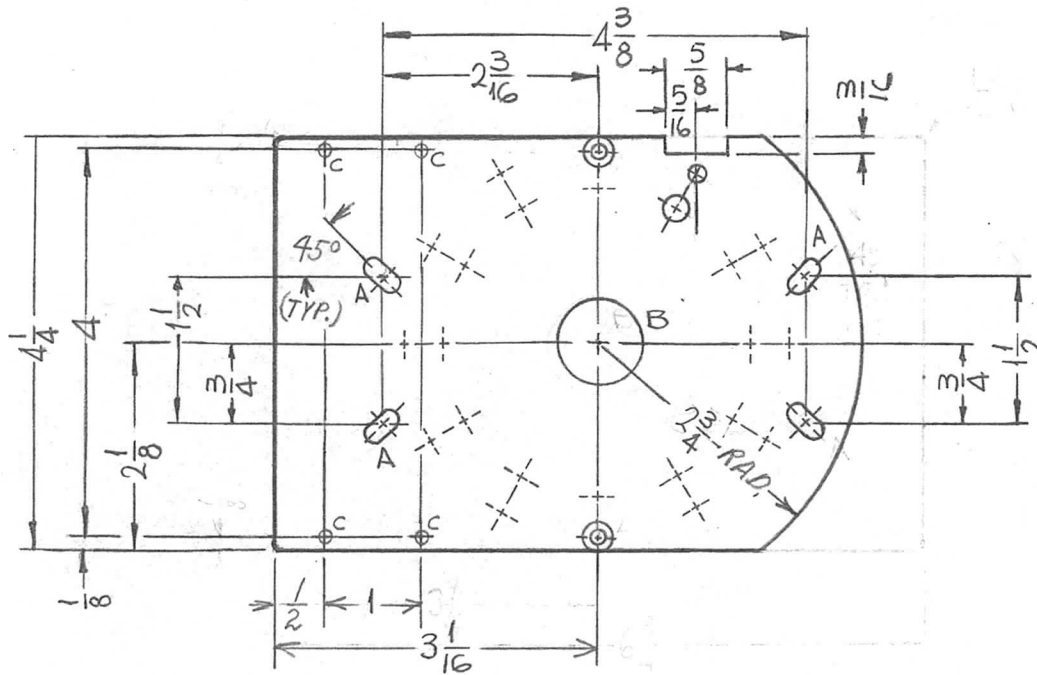


PROTO TYPE DWG.  
NOT FOR PROD.

REQ. PER UNIT	USED ON			PX913 $\emptyset$
	MODEL	ASS'Y. NO.	DATE	
1	RFTA-1		12-22-64	

HOLES	DESCRIPTION	REQ.
A	3/16 X 3/8 SLOT	4
B	SEE DETAIL	1
C	1/8 DIA.	4



$\emptyset$	ORIGINAL RELEASE FOR PRODUCTION	9/13/66	$\emptyset$	CV		JHC	1	1	BB120-1	BEARING, RACE	B	
X <sub>2</sub>	CUTOUT ADDED	7-28-65	X <sub>2</sub>	SRG			1/4 THICK		THE TECHNICAL MATERIEL CORP. MAMARONECK, NEW YORK			
X <sub>1</sub>	C HOLES, 2 3/4 DIM & C'SINK HOLES ADDED	1-11-64	X <sub>1</sub>	SRG			STOCK SIZE		WAFER, SWITCH, L SECTION			
X	EXP. RELEASE	12-22-64	X	SRG			MELAMINE					
SYM	DESCRIPTION	DATE	CH. NO.	DRAFTS	CHECKER	ENG. APP.	MATERIAL					
UNLESS OTHERWISE SPECIFIED DIMENSIONS ARE IN INCHES AND INCLUDE CHEMICALLY APPLIED OR PLATED FINISHES		SCALE		1/2 : 1				G11		SRG	JCB	SRG
DECIMALS .X $\pm$ .05 .XX $\pm$ .01 .XXX $\pm$ .005		FRACTIONS $\pm$ 1/64 ANGLES $\pm$ 0° 30'		TOLERANCES		CODE	TYPE & TEMPER		HEAT TREAT. SPEC.	DRAWN	CHECKED	FINAL APPROVAL
				A			NONE			SRG	JCB	PX913 $\emptyset$
							FINISH & SPEC. NO.		ELEC. DES. APP.	MECH. DES. APP.		