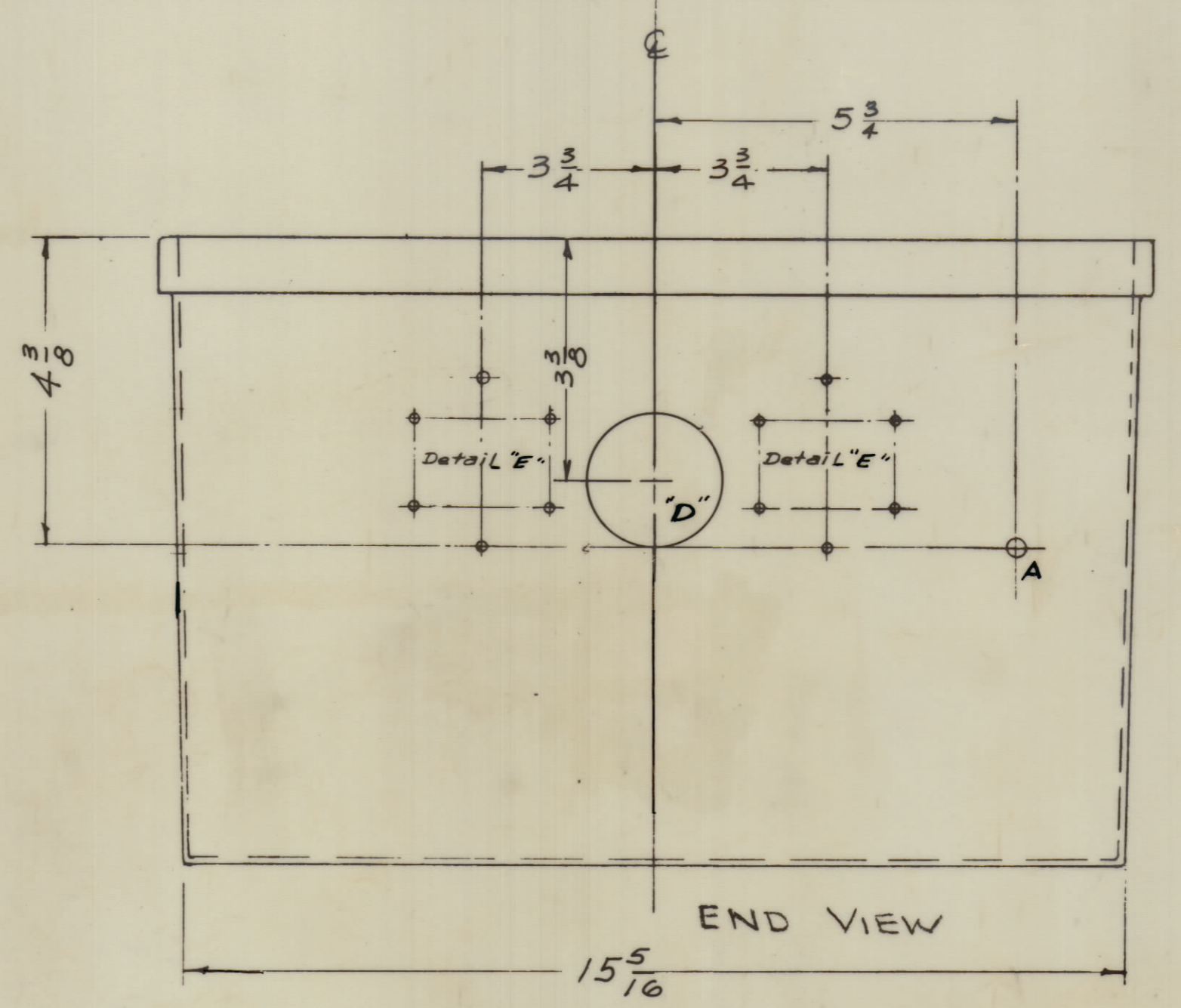
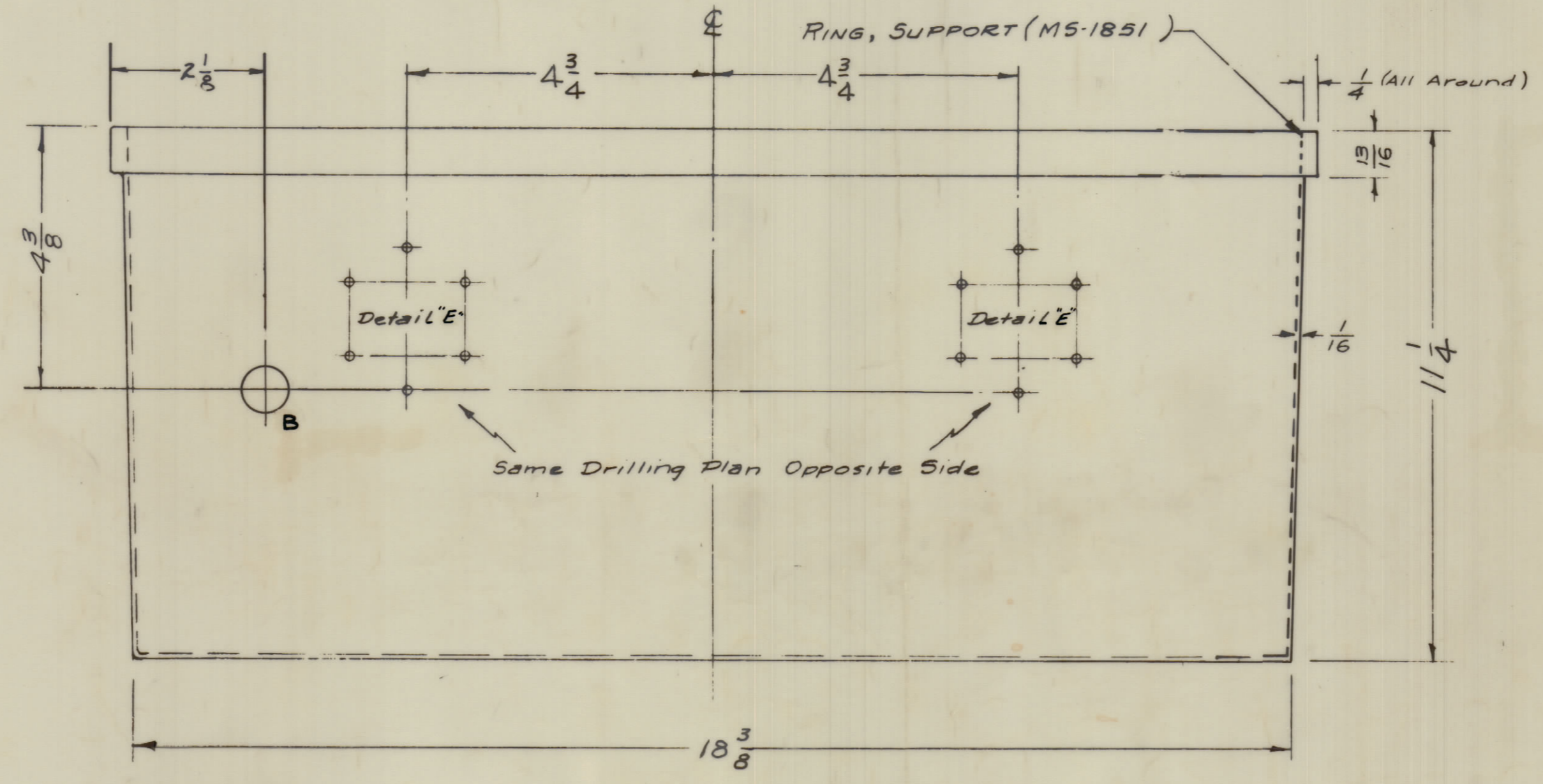
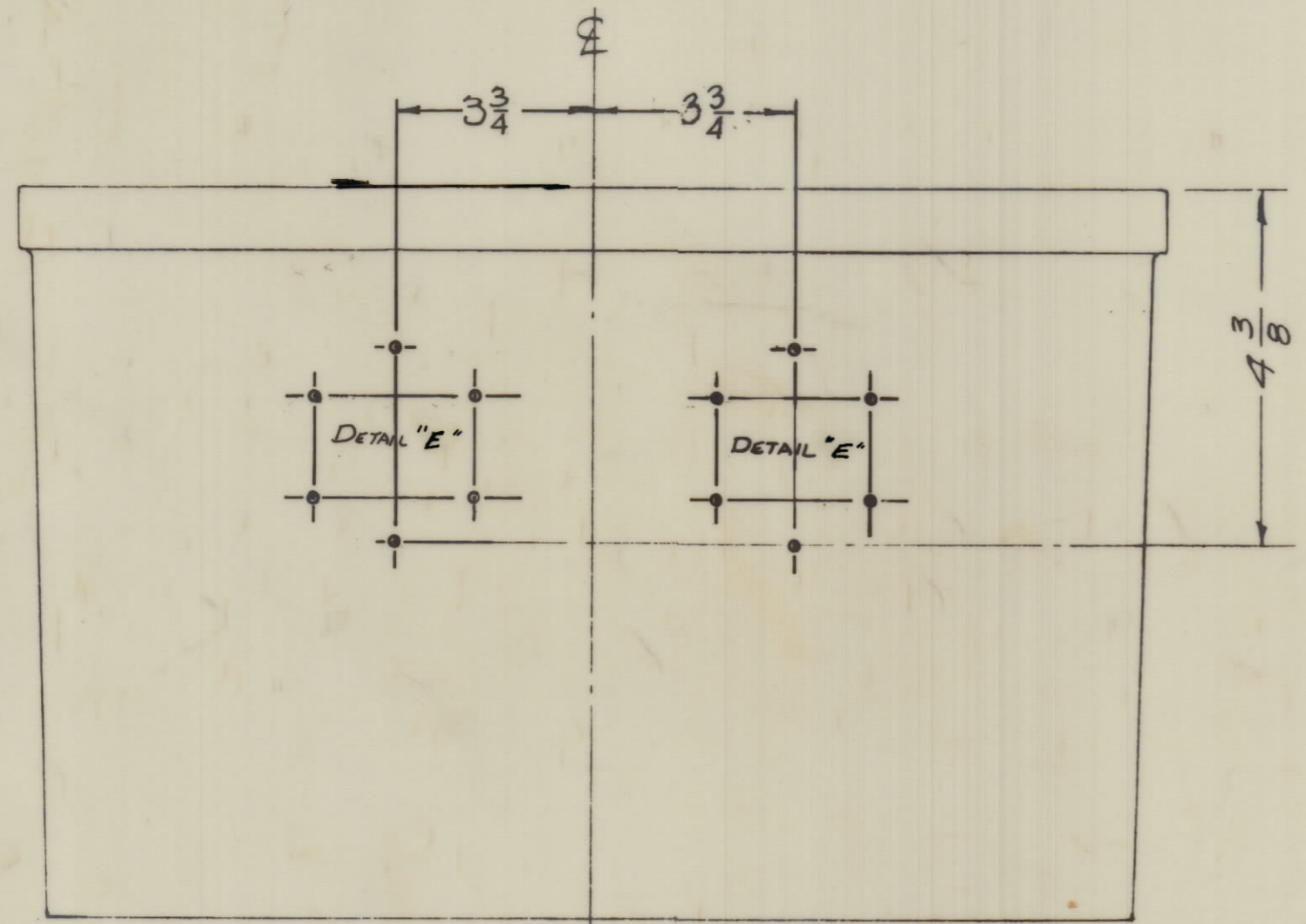
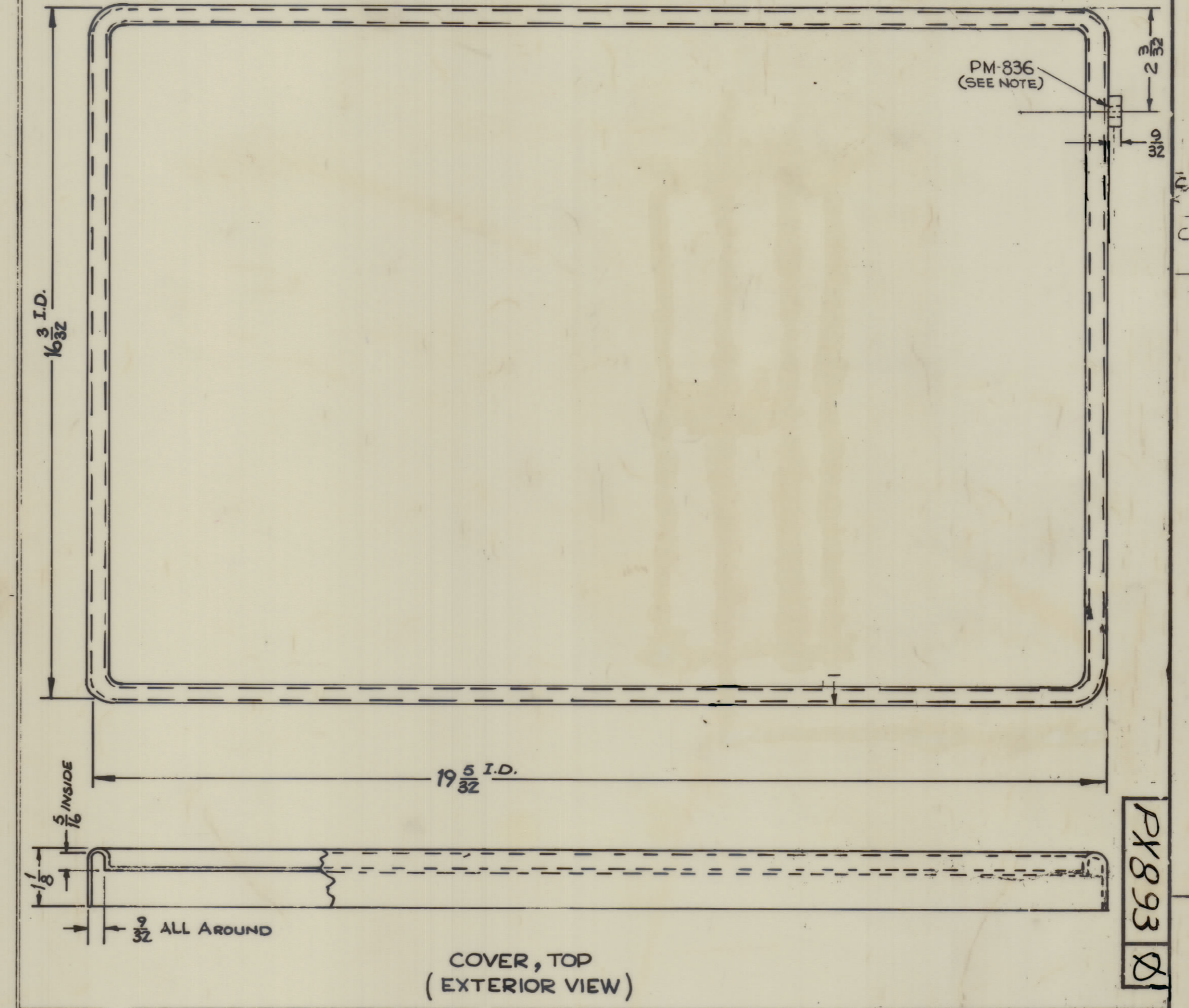
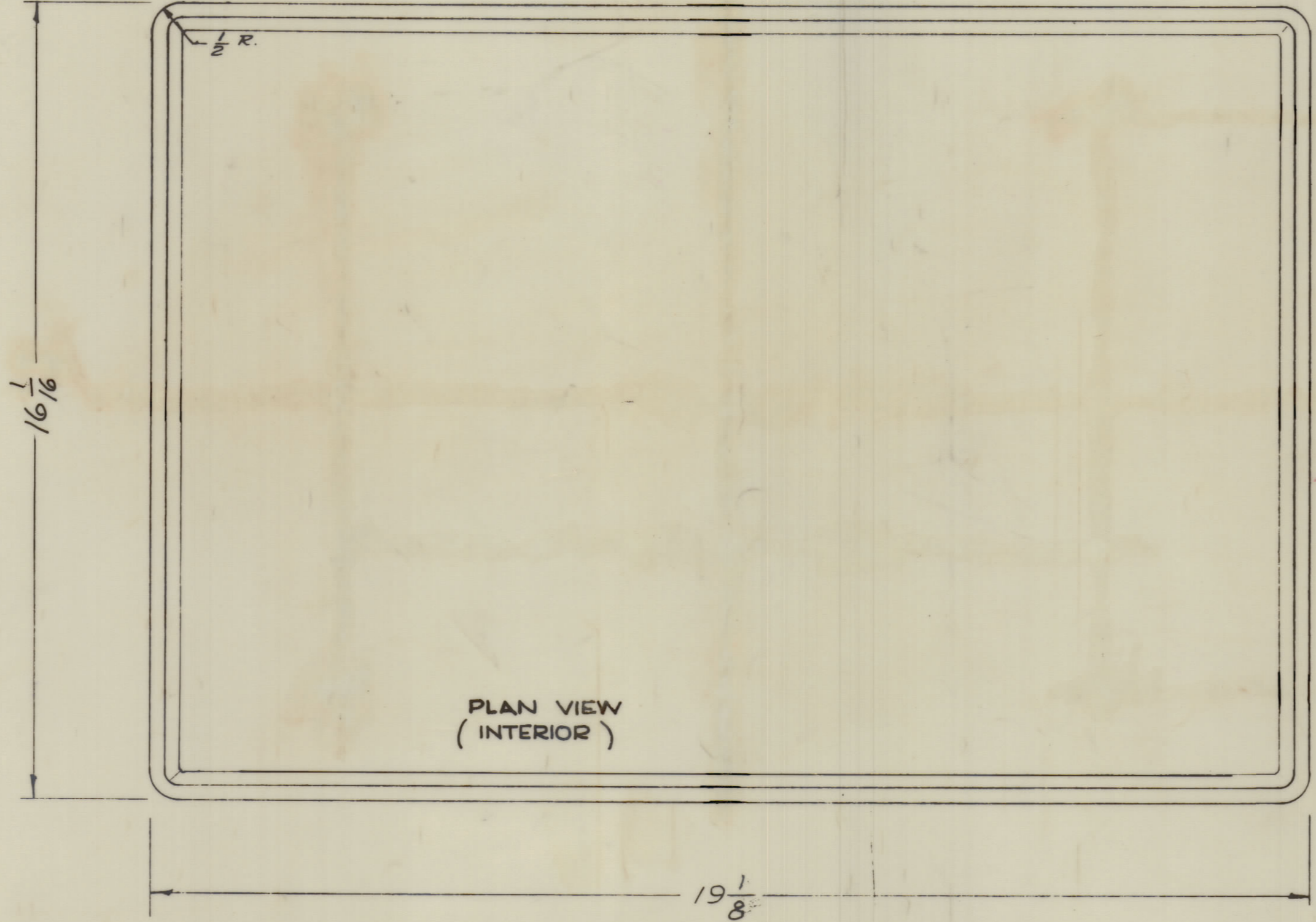
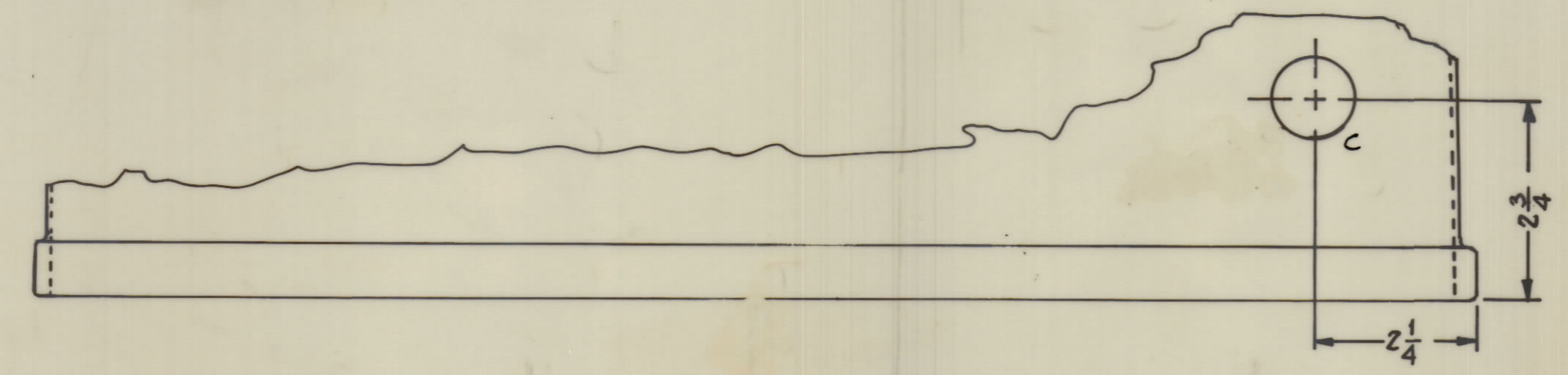
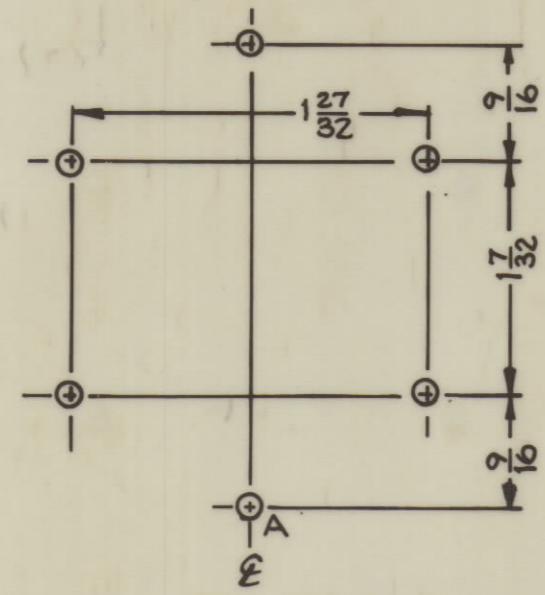


IF IT IS FOUND DESIRABLE TO CHANGE ANY TOLERANCE OR OTHER DETAIL SPECIFIED ON THIS DRAWING NOTIFY THE PURCHASER PROMPTLY.
 MAXIMUM ALLOWABLE TOLERANCES HAVE BEEN DETERMINED AND DEVIATIONS WILL BE CAUSE FOR REJECTION.
 REMOVE ALL BURRS AND SHARP EDGES.

PERSONS RECEIVING THIS DRAWING
 THE TECHNICAL MATERIEL CORPORATION aims proprietary right in the material disclosed here. This drawing is issued in confidence for engineering information only and may not be reproduced or used to manufacture anything shown hereon without permission from THE TECHNICAL MATERIEL CORPORATION to the user. This drawing is loaned for mutual assistance and is subject to recall at any time.
 Property of:
 THE TECHNICAL MATERIEL CORPORATION
 MAMARONECK, NEW YORK

- A - 1/4 DIA 1 REQ'D
- B - 7/8 DIA 1 REQ'D
- C - 1 1/8 DIA 1 REQ'D
- D - 1 5/16 DIA 1 REQ'D
- E - SEE DETAIL B REQ'D



FINISH NOTE:
 COAT ALL SURFACES WITH EPOXY RESIN.

NOTE:
 THIS INSERT WILL BE USED TO FASTEN COVER CHAIN TO COVER.

ISSUE	ITEM	CHANGED FROM	DATE	CH. NO.	DRAFTS	CHECKER	ENG. APP.
1		ORIGINAL RELEASE FOR PROD. 3-7-66					
TOLERANCES							
ALL	DEC. DIM. ±	DRILL PUNCH, COMMERCIAL STOCK					
OTHERS	FRAC. DIM. ±	SIZES AND MANUFACTURERS					
	ANGULAR DIM. ±	TOLERANCES ARE NOT INCLUDED.					

REQ. PER UNIT	A2920	PROJECT NO.	ASSY. NO.	DATE
USED ON				

REQ. ITEM	PART NO.	DESCRIPTION	SYMBOL
THE TECHNICAL MATERIEL CORP. MAMARONECK, NEW YORK			
STOCK SIZE			
Fiberglass		CASE & COVER	
MATERIAL WEIGHT PER PC.			
TYPE & TEMPER			
DRAWN			
CHECKED			
HEAT TREAT SPEC.			
FINISH & SPEC. NO.			

PX893

PX893