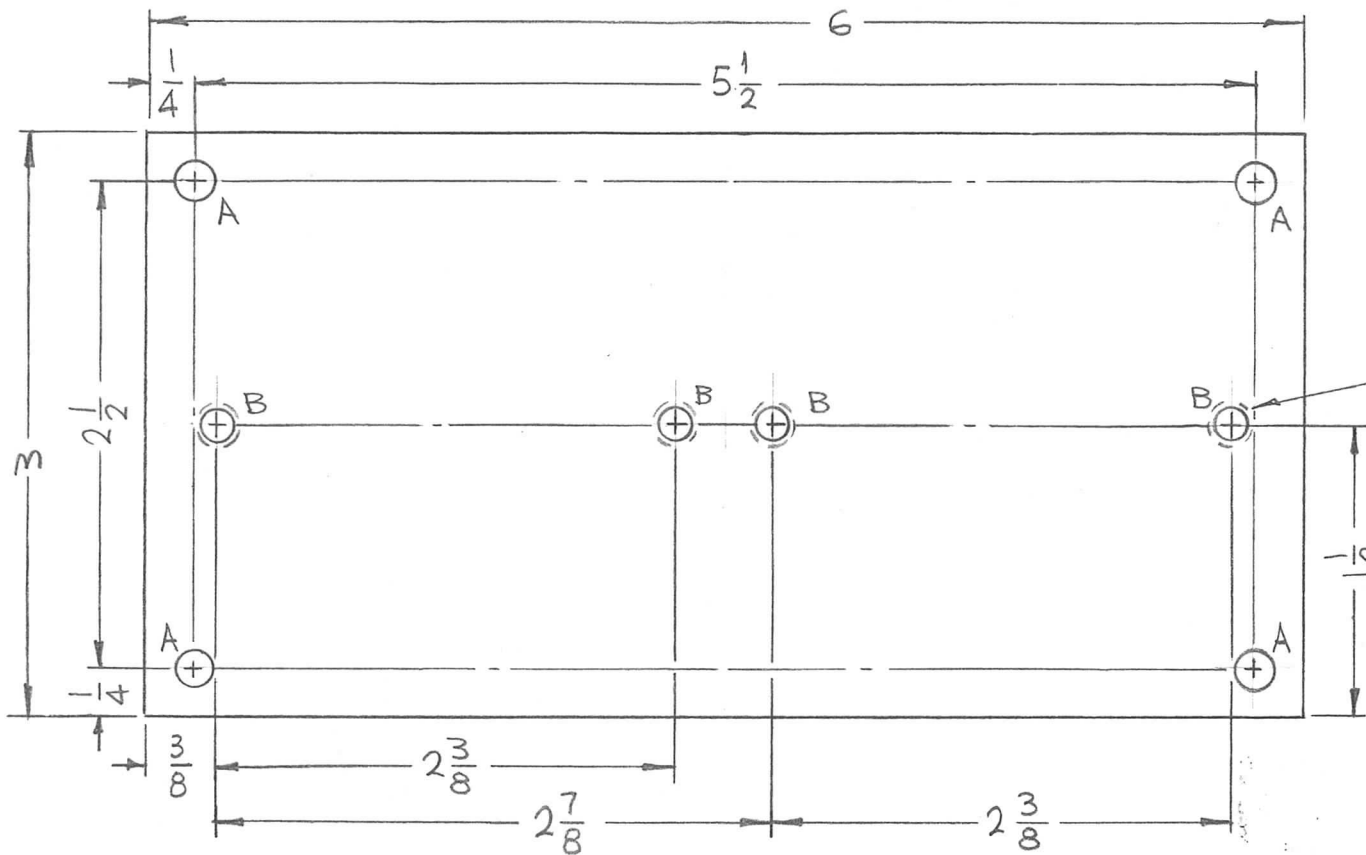


REQ. PER UNIT	USED ON			PX886	Ø
	MODEL	ASS'Y. NO.	DATE		
1	GPT-10KLF		11-3-65		



HOLES:  
 A - 13/64 DIA. (4REQ.)  
 B - INSERT ITEM 1 (4REQ.)

① INSERT IN ALL B HOLES,

REF: LD 1685

							4	1	NT 139SC08-15-S	INSERT, SCREW THREAD	B
							REQ.	ITEM	PART NO.	F. BUDETTI DESCRIPTION	SYMBOL
							3/8 THICK			THE TECHNICAL MATERIEL CORP.	
							STOCK SIZE			MAMARONECK, NEW YORK	
							G-11 EPOXY			BOARD, MTG. CAPACITORS	
							MATERIAL				
Ø ORIGINAL RELEASE	12/20/65										
SYM	DESCRIPTION	DATE	CH. NO.	DRAFTS	CHECKER	ENG. APP.					
UNLESS OTHERWISE SPECIFIED DIMENSIONS ARE IN INCHES AND INCLUDE CHEMICALLY APPLIED OR PLATED FINISHES		SCALE		1:1							
DECIMALS .X ± .05 .XX ± .01 .XXX ± .005	TOLERANCES	FRACTIONS ± 1/64 ANGLES ± 0° 30'	CODE A								
							TYPE & TEMPER	HEAT TREAT. SPEC.	DRAWN	CHECKED	FINAL APPROVAL
							FINISH & SPEC. NO.		ELEC. DES. APP.	MECH. DES. APP.	PX886