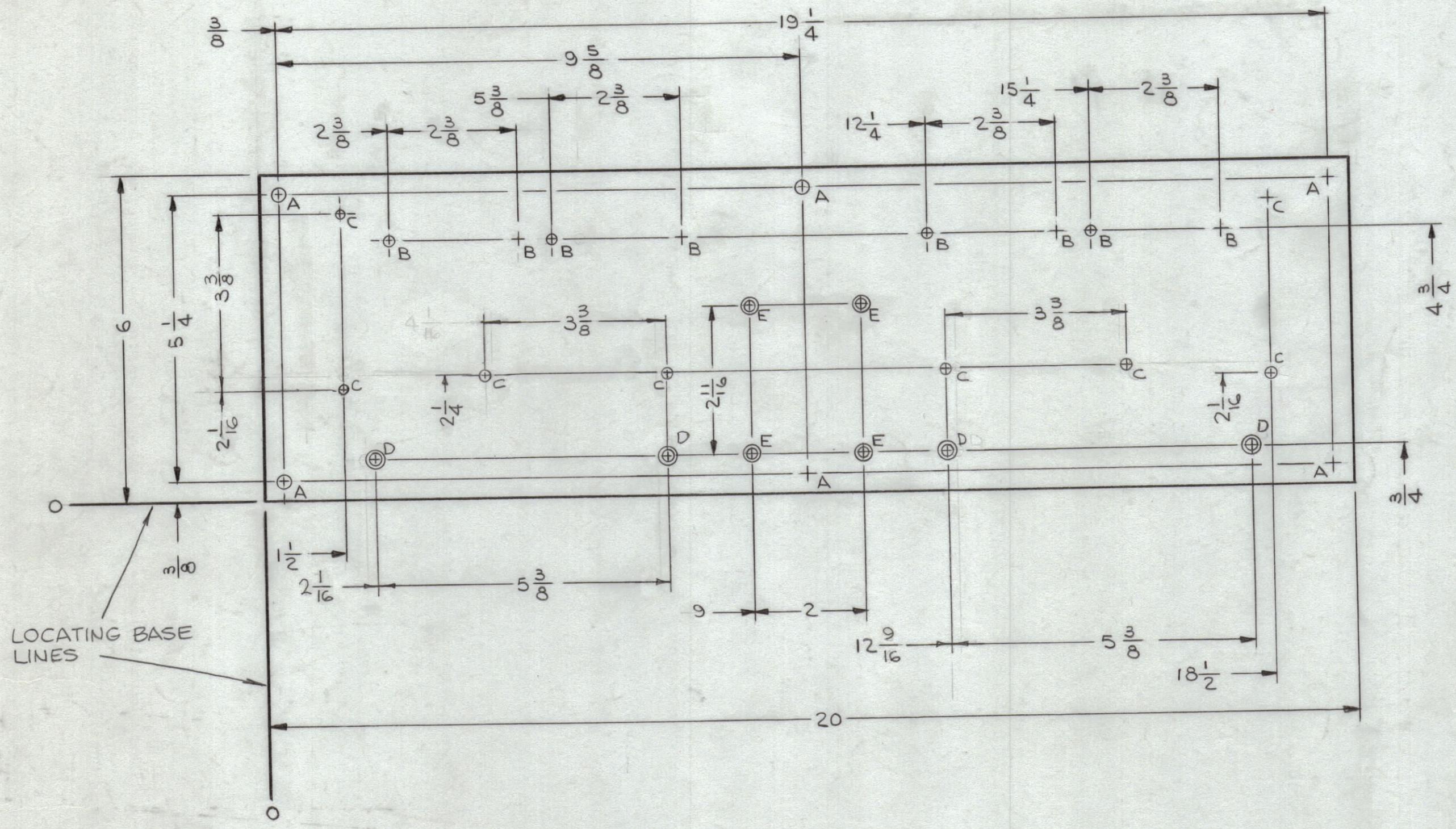


| REVISIONS | | | | | | |
|-----------|-----|---|----------|------------|-------|------|
| ZONE | SYM | DESCRIPTION | DATE | E.M.N. NO. | DRAFT | CHKD |
| X1 | | REDRAWN & REVISED | 2/10/65 | | JL | |
| X2 | | CED HOLES RE-LOCATED | 12-21-65 | X2 | JL | |
| Ø | | ORIGINAL RELEASE FOR PRODUCTION | 12-22-65 | | JL | |
| A | | C/SINK "D" & "E" HOLES CLARIFIED PICT. "BOTH SIDES" DELE FROM HOLE CHART ON "D" & "E" HOLES DESC. | 12.16.66 | 17509 | WFO | JCB |



| HOLE LEGEND | | |
|-------------|---|-------|
| HOLE | DESCRIPTION | REQ'D |
| A | 7/32 DIA | 6 |
| B | 3/16 DIA | 8 |
| C | 5/32 DIA | 8 |
| D | NO. 7 (.2010) DRILL, C/SINK 82° X. 320 DIA HELICOIL TAP # 3SPB (#10-32) | 4 |
| E | NO. 17 (.1730) DRILL, C/SINK 82° X. 280 DIA HELICOIL TAP # 2CPB (#8-32) | 4 |

ITEM ①
ITEM ②

- UNLESS OTHERWISE SPECIFIED -
1- INSTALL ITEMS 1 & 2 IN CENTER OF BOARD THICKNESS.
2- BREAK OFF DRIVING TANG.

NOTES

REF.: LD1674

| REQ'D | ITEM | PART NUMBER | DESCRIPTION | SYMBOL |
|-------|------|-----------------|----------------------|--------|
| 4 | 2 | NT139 SC08-15-S | INSERT, SCREW THREAD | E |
| 4 | 1 | NT139 SFI-15-S | " " " | D |

| LIST OF MATERIAL | |
|---|--|
| MATERIAL 3/8 THK GLASS EPOXY GRADE G-11 | THE TECHNICAL MATERIEL CORP. MAMARONECK, NEW YORK |
| FINISH NATURAL | TITLE PA COMPARTMENT BOARD |
| UNLESS OTHERWISE SPECIFIED DIMENSIONS ARE IN INCHES AND INCLUDE CHEMICALLY APPLIED OR PLATED FINISHES | DRAWN J. LESHINSKI DATE 2/10/65 |
| DECIMALS .X ± .05 .XX ± .01 .XXX ± .005 | CHECKED JCB DATE 6-21-65 |
| FRACTIONS ± 1/64 ANGLES ± 0° 30' | ELECT. DES. DATE |
| TOLERANCES | MECH. DES. DATE |
| THE CONTENTS OF THIS DRAWING ARE THE EXCLUSIVE PROPERTY OF THE TECHNICAL MATERIEL CORP. ITS UNAUTHORIZED USE OR REPRODUCTION IN WHOLE OR IN PART IS STRICTLY FORBIDDEN. | FINAL APPROVAL DATE 12/22/65 |
| | SHEET PX 872 A |
| | REV. LTR. |

PX 872 A