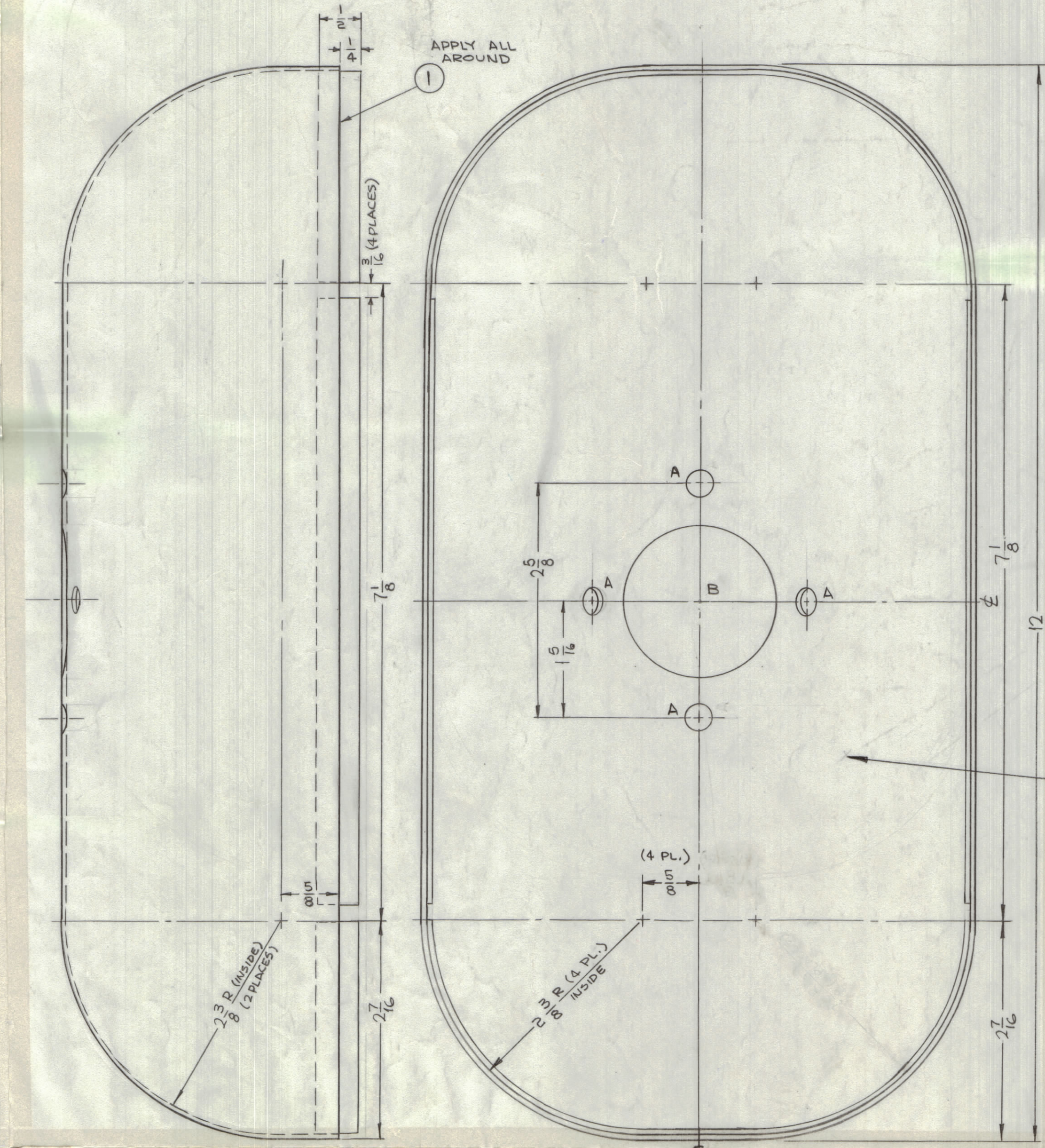
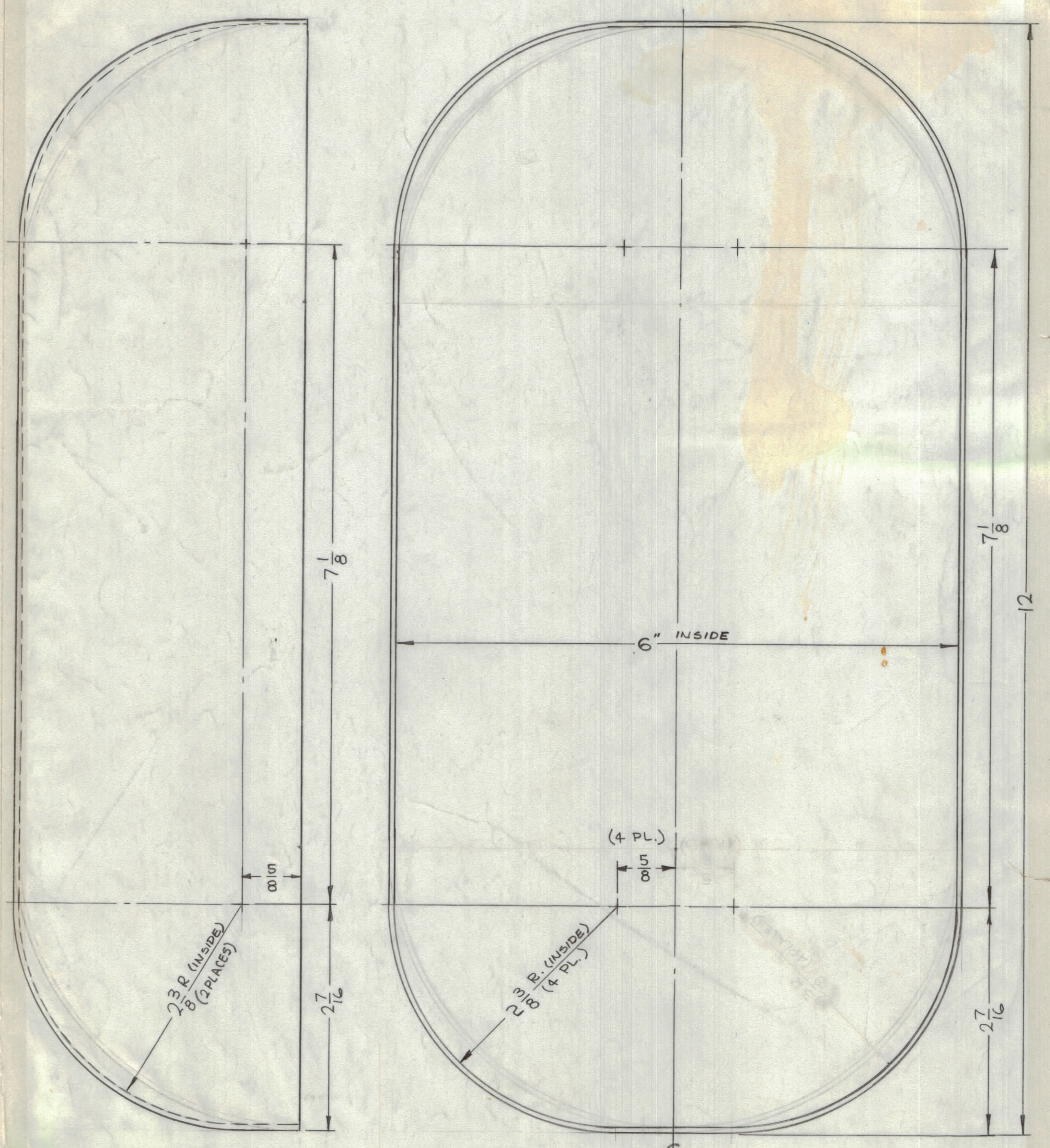
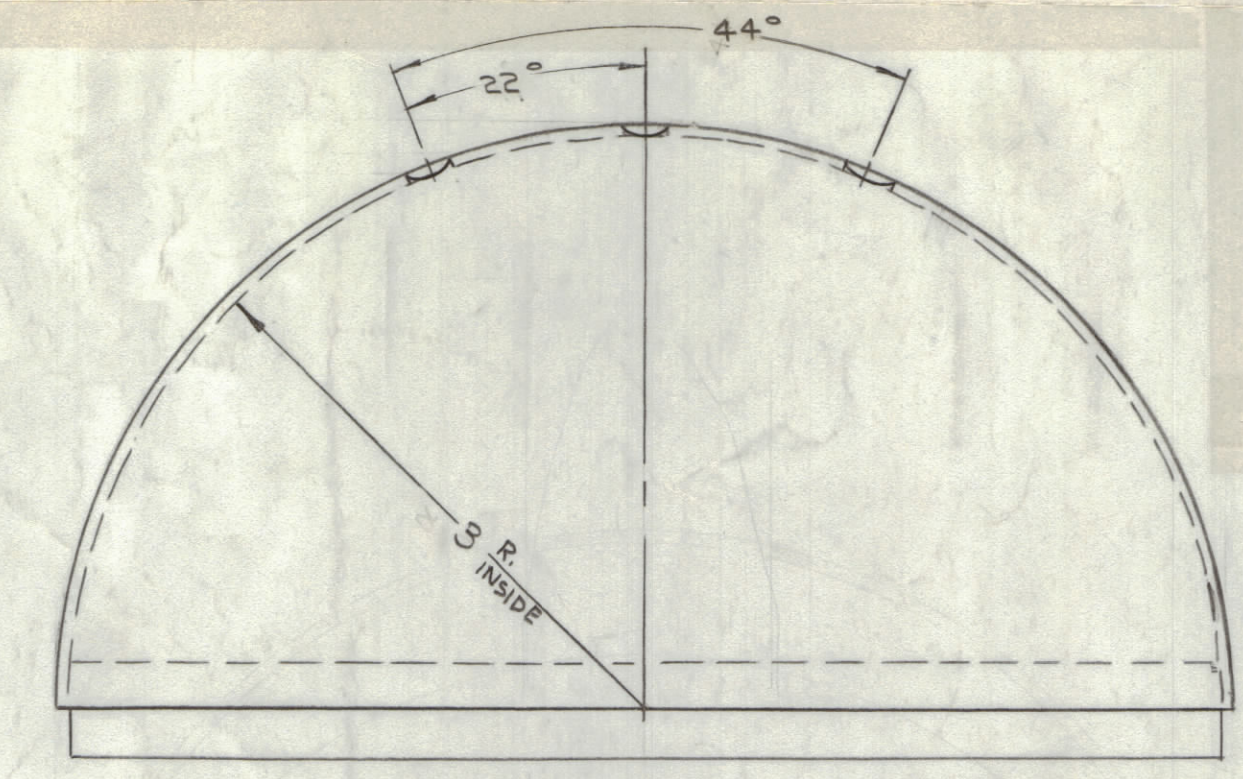
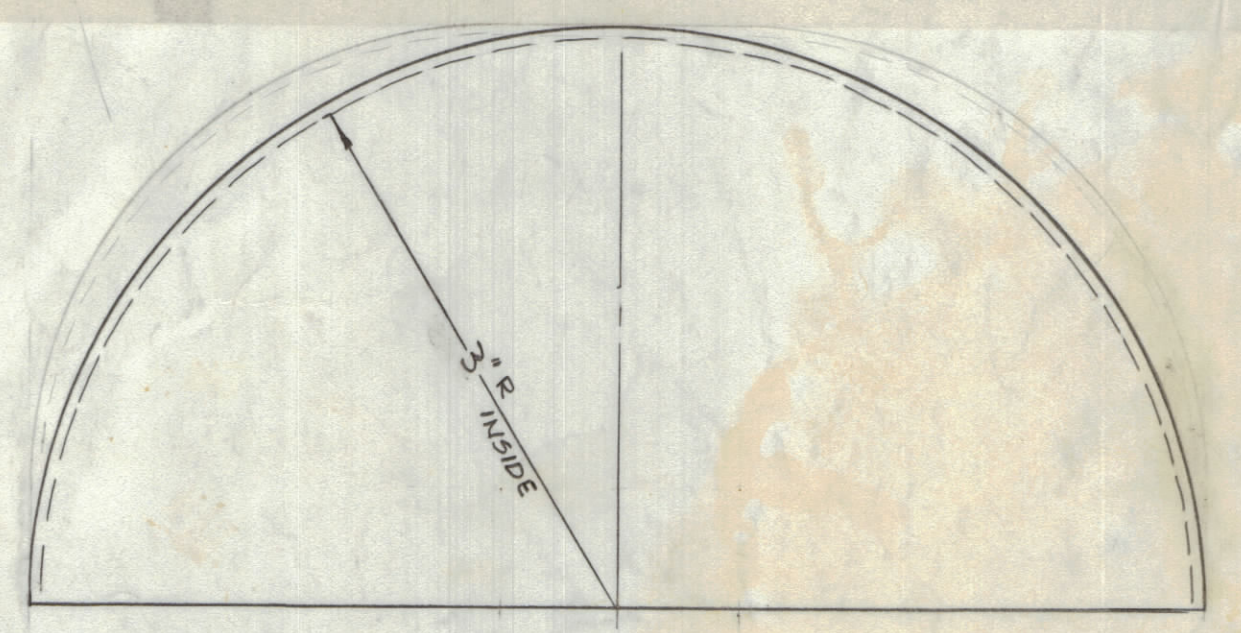


REVISIONS							
ZONE	SYM	DESCRIPTION	DATE	E.M.N. NO.	DRAFT	CHKD	APPD
X		EXPER. RELEASE	11-12-44	X	SRG		
Q		ORIGINAL RELEASE FOR PRODUCTION	12-15-44	Q	JL		



HOLE	DESCRIPTION	REQ.
A	3/32 DIA.	4
B	1-11/16 DIA.	1

STAMP TMC P/N 1/8 HIGH GOTHIC

REQ'D.	ITEM	PART NUMBER	DESCRIPTION	SYMBOL
X	1	GL132	EPOXY ADHESIVE	

LIST OF MATERIAL		THE TECHNICAL MATERIEL CORP.	
MATERIAL 4 LAYERS, 83 V.P. 2 PLY FIBERGLASS (3/32 THK., REF. ONLY)		MAMARONECK, NEW YORK	
FINISH S756 GREY SYNTHETIC ENAMEL		TITLE SHIELD, ANTENNA (TOP & BOTTOM)	

QTY./UNIT	MODEL USED ON	ASSY. NO.
1	LFRA-1	A3988

SCALE	CODE	DATE	FINAL APPROVAL
1:1	A	11-13-44	SRG
		12-15-44	Q

DECIMALS	FRACTIONS	ANGLES	TOLERANCES
X ± .05	± 1/64		
XX ± .01			
XXX ± .005			

DATE	DATE	DATE	DATE
11-13-44	12-15-44	12-15-44	12-15-44

REV.	LTR.
Q	PX869

NOTES

THE CONTENTS OF THIS DRAWING ARE THE EXCLUSIVE PROPERTY OF THE TECHNICAL MATERIEL CORP. ITS UNAUTHORIZED USE OR REPRODUCTION IN WHOLE OR IN PART IS STRICTLY FORBIDDEN.

PX869