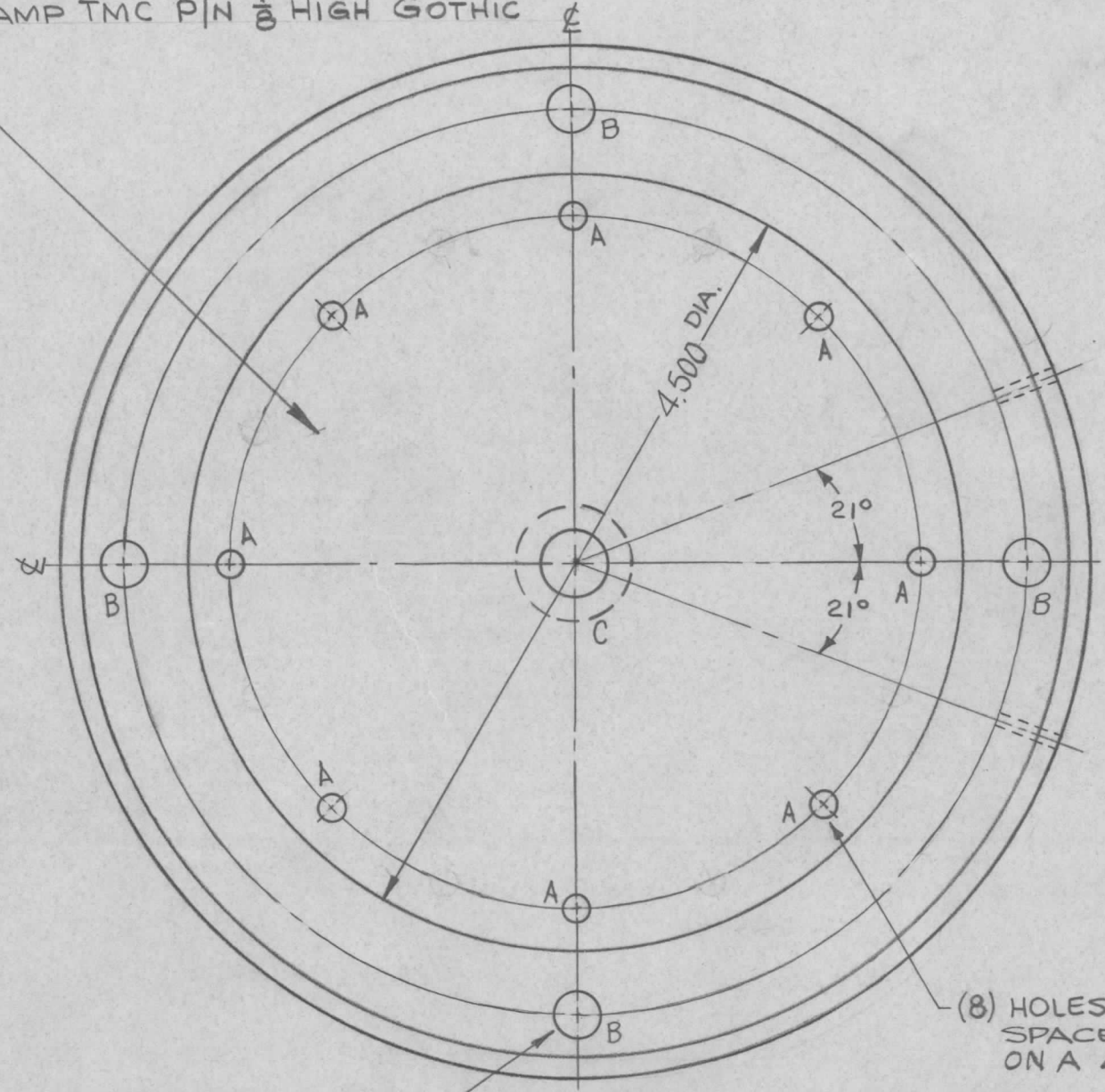


PX867 A

REVISIONS

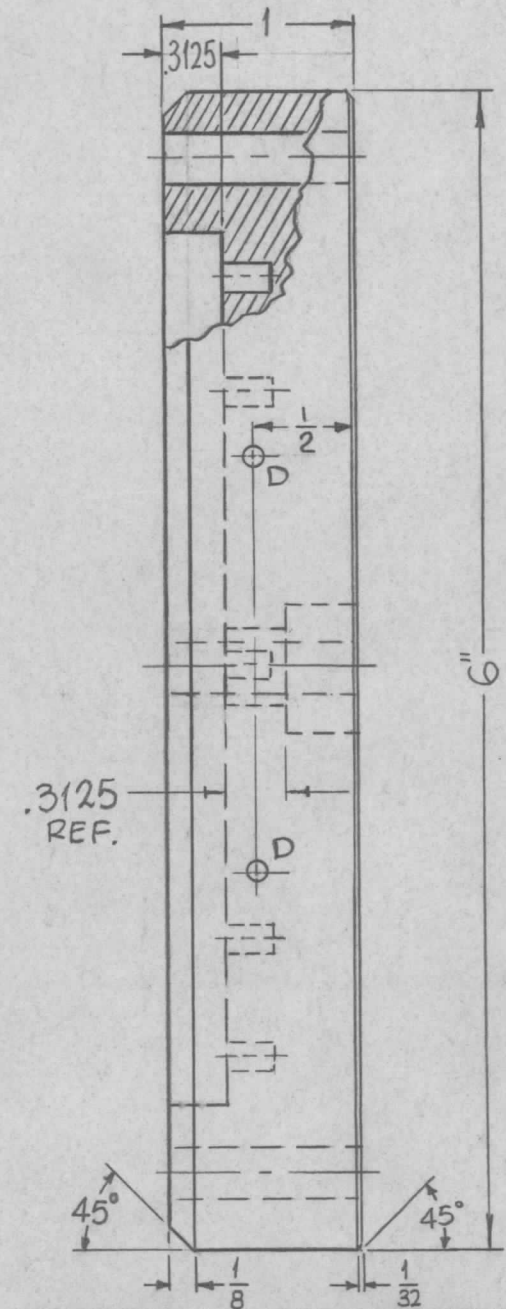
SYM	DESCRIPTION	DATE	E.M.N. NO.	DRAFT	CHKD	APPD
X	EXPERIMENTAL RELEASE	11-12-64	X	SRG		
Ø	ORIGINAL RELEASE FOR PRODUCTION	12-15-64	Ø	RF		
A	"C" DETAIL REVISED; ON PICT: ON "A" HOLE CALLOUT 45° WAS 22.5°	2-3-65	13389	RF	gcb	

STAMP TMC P/N $\frac{1}{8}$ HIGH GOTHIC

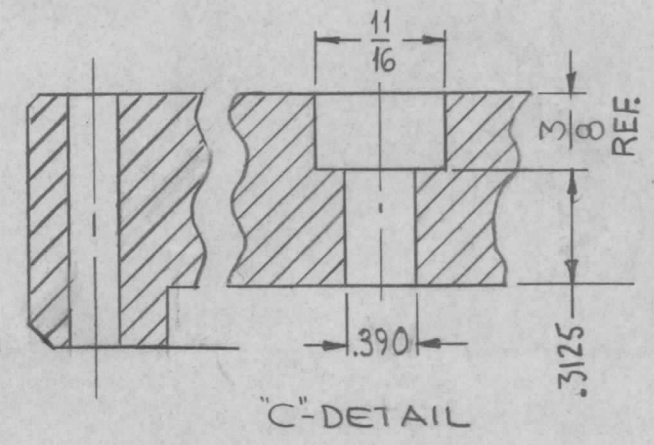


(4) HOLES EQUALLY SPACED 90° APART ON A 5.250 DIA.

(8) HOLES EQUALLY SPACED 45° APART ON A 4.000 DIA.



HOLE	DESCRIPTION	REQ.
A	.157 DIA. x 1/4 DEEP.	16
B	17/64 DIA.	4
C	SEE DETAIL.	1
D	DRILL & TAP FOR 3-48 x 3/8 DP.	2



REQ'D.	ITEM	PART NUMBER	DESCRIPTION	SYMBOL
Ø	POSE		LIST OF MATERIAL	
MATERIAL		THE TECHNICAL MATERIEL CORP. MAMARONECK, NEW YORK		
FINISH		TITLE BASE, ANTENNA		
UNLESS OTHERWISE SPECIFIED DIMENSIONS ARE IN INCHES AND INCLUDE CHEMICALLY APPLIED OR PLATED FINISHES		DRAWN	DATE	FINAL APPROVAL
DECIMALS .X ± .05 .XX ± .01 .XXX ± .005		SRG	11-12-64	RF
FRACTIONS ± 1/64 ANGLES ± 0° 30'		CHECKED	DATE	
TOLERANCES		@	12-15-64	
		ELECT. DES.	DATE	
		M. Jeffrey	11-24-64	
		MECH. DES.	DATE	
SHEET				REV. LTR.

1	LFRA -1	A3988
Q'TY./UNIT	MODEL USED ON	ASS'Y. NO.
SCALE	CODE	
1:1	A	
THE CONTENTS OF THIS DRAWING ARE THE EXCLUSIVE PROPERTY OF THE TECHNICAL MATERIEL CORP. ITS UNAUTHORIZED USE OR REPRODUCTION IN WHOLE OR IN PART IS STRICTLY FORBIDDEN.		

NOTES