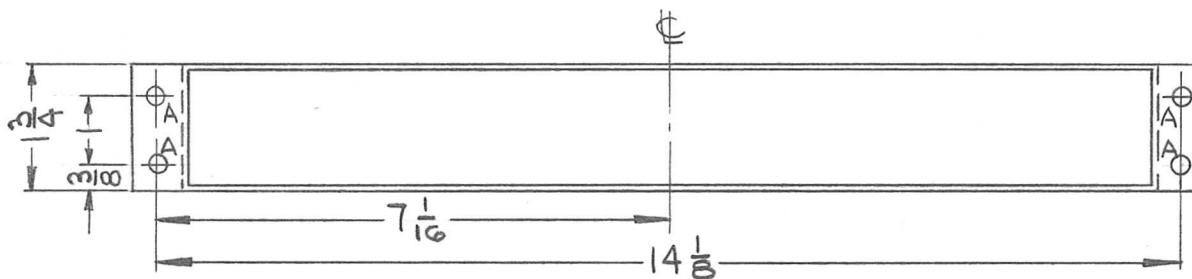
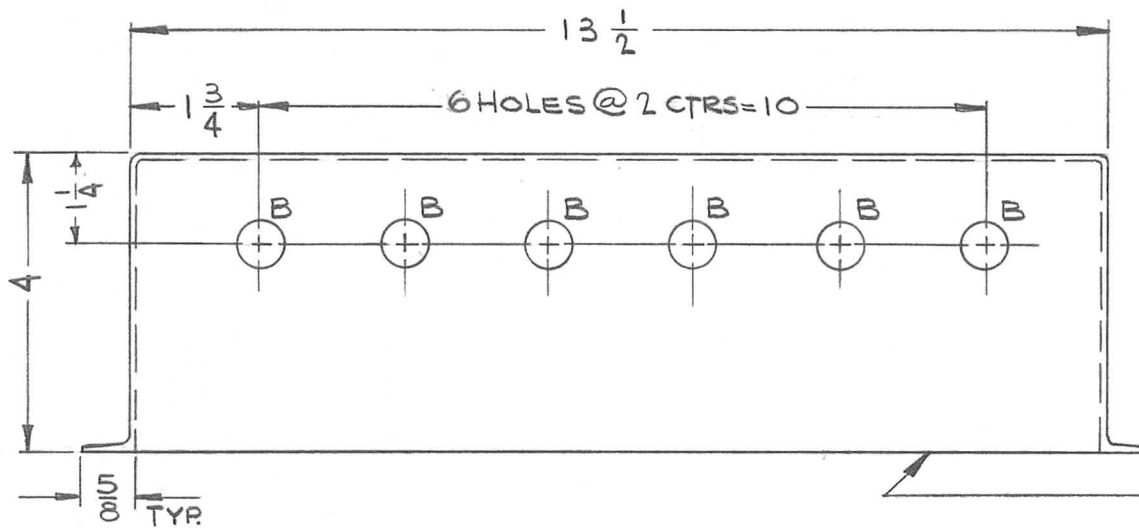


HOLE	DESCRIPTION	REQ.
A	1/64 DIA.	4
B	5/8 DIA.	6

REQ. PER UNIT	USED ON		
	MODEL	ASS'Y. NO.	DATE
1	HVRB-1		1-19-65
1	HVRC-1		1-19-65

PX862 \emptyset



SYM	DESCRIPTION	DATE	CH. NO.	DRAFTS	CHECKER	ENG. APP.	REQ. ITEM	PART NO.	DESCRIPTION	SYMBOL	
\emptyset	ORIGINAL RELEASE FOR PRODUCTION	2-26-65	\emptyset	SL	748		1/16 THK		THE TECHNICAL MATERIEL CORP. MAMARONECK, NEW YORK	FLUE, AIR	
X	EXPERIMENTAL RELEASE	1-19-65		WLA			FIBERGLASS				
	UNLESS OTHERWISE SPECIFIED DIMENSIONS ARE IN INCHES AND INCLUDE CHEMICALLY APPLIED OR PLATED FINISHES	SCALE 3/8 : 1								H.AUSTIN	JCB Rpe
	DECIMALS .X \pm .05 .XX \pm .01 .XXX \pm .005	TOLERANCES	FRACTIONS \pm 1/64 ANGLES \pm 0° 30'	CODE			TYPE & TEMPER	HEAT TREAT. SPEC.	DRAWN	CHECKED	FINAL APPROVAL
									JCB	WLA	PX862 \emptyset
							FINISH & SPEC. NO.		ELEC. DES. APP.	MECH. DES. APP.	