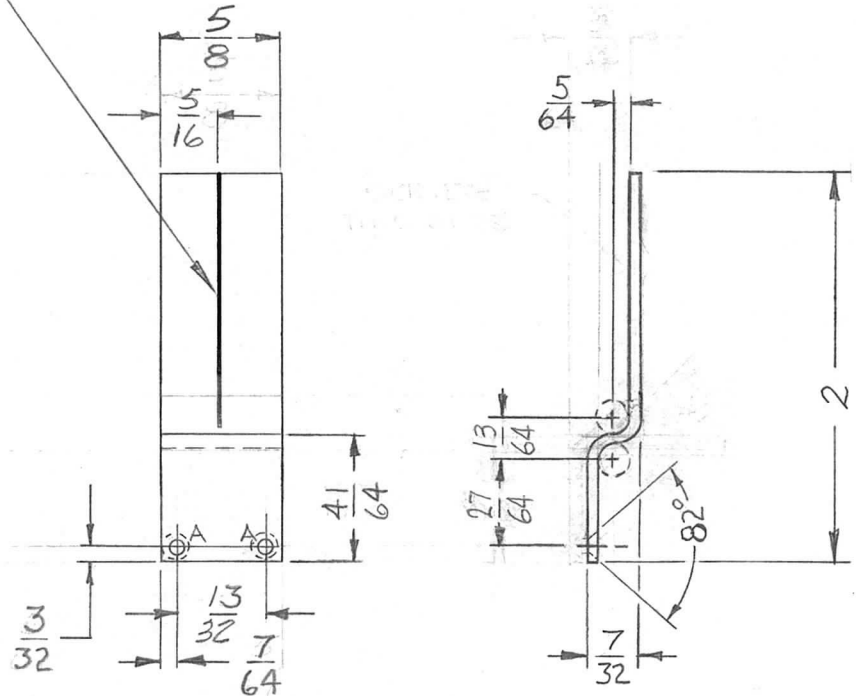


REQ. PER UNIT	USED ON		
	MODEL	ASS'Y. NO.	DATE
1	HFR-2	A3624	4-8-64
1	HFRR-2	A3625	9-11-64

PX 844 c

.010 WIDE (SCRIBED LINE)
(BLACK FILLED)
ON REVERSED SIDE.



HOLE LEGEND		
HOLE	DESCRIPTION	REQD
A	.090 DIA. - CSK 82° TO .177 DIA. (2-56)	2

C	41/64 WAS 35/64. 040THK WAS 1/32, 27/64 WAS 7/16, 13/64 WAS 3/16	4-12-67	18104	L.A.K.		
B	7/16 DIM. RELOCATED. ON REVERSED SIDE DELE. FROM CALLOUT.	4-9-65	13864	J.L.		
A	35/64 DIM. ADD; ON REVERSED SIDE ADD. TO CALLOUT; SIDE VIEW REVISED	2-25-65	13576	J.L.		
Ø	ORIGINAL RELEASE FOR PRODUCTION	9-11-64	Ø	J.L.		

SYM	DESCRIPTION	DATE	CH. NO.	DRAFTS	CHECKER	ENG. APP.
X ₁	HOLE "A" WAS .062 DIA. 13/32 WAS 15/32, 3/16 WAS 9/32 3/32 WAS 5/64, 7/64 WAS 5/64	9/10/64		J.P.		
X	EXP. RELEASE	4-8-64		J.P.		
UNLESS OTHERWISE SPECIFIED DIMENSIONS ARE IN INCHES AND INCLUDE CHEMICALLY APPLIED OR PLATED FINISHES		SCALE NONE				
DECIMALS .X ± .05 .XX ± .01 .XXX ± .005	TOLERANCES	FRACTIONS ± 1/64 ANGLES ± 0° 30'	CODE A			

REQ. ITEM	PART NO.	T. KRUY	DESCRIPTION	SYMBOL
	.040 THK STOCK SIZE		THE TECHNICAL MATERIEL CORP. MAMARONECK. NEW YORK	
	PLEXIGLASS		INDICATOR, FREQUENCY CHANNEL (SLIDE ASSY)	
	CLEAR			
TYPE & TEMPER	HEAT TREAT. SPEC.	DRAWN	CHECKED	FINAL APPROVAL
		T. Kruey		PX 844 c
FINISH & SPEC. NO.	ELEC. DES. APP.	MECH. DES. APP.		