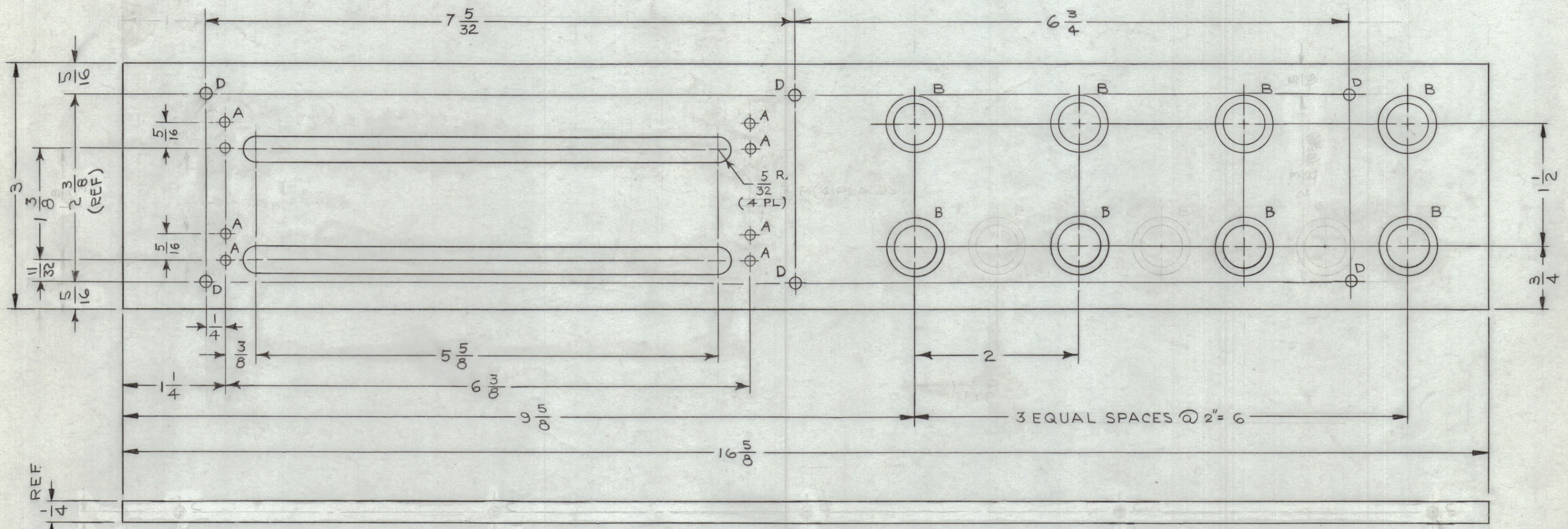


REVISIONS							
ZONE	SYM	DESCRIPTION	DATE	E.M.N. NO.	DRAFT	CHKD	APPD
X1		"B" HOLES WAS 7 REQ'D. & SIZE CHG	3/4/64	-4	N.P.		
A		(2) D HOLES ADDED; (12) "C" HOLES # 1T. (1) DELETED DIMS REVISED & ADDED	7-16-64	11877			
B		REF, NOTE ADD. IT: "I" ADDED.	10-23-64	12751			



(ALL DIMENSIONS ARE TYPICAL)  
ON OPPOSITE EDGE.

HOLE LEGEND		
HOLE	DESCRIPTION	REQ'D
A	.140 DIA	8
B	3/8 DIA. THRU & C'BORE 19/32 DIA X 3/16 DEEP	8
C	NEAR (1/20) DIA X 7/16 DP & TAP WITH 1/16 DIA TAP NEAR (1/20) X 3/16 DP	4
D	.150 DIA	6

REF: LD 1446

REQ'D.	ITEM	PART NUMBER	DESCRIPTION	SYMBOL
12	1	NT1395C06-1	INSERT, SCREW THREADED	

I. JOHNSON		LIST OF MATERIAL	
MATERIAL	BAKELITE 1/4 THK GRADE XXXP	THE TECHNICAL MATERIEL CORP. MAMARONECK, NEW YORK	
FINISH	BLACK, SEMI-GLOSS	TITLE PANEL, PATCH	
Q'TY./UNIT	MODEL USED ON	ASS'Y. NO.	
SCALE	1:1	CODE	A
UNLESS OTHERWISE SPECIFIED DIMENSIONS ARE IN INCHES AND INCLUDE CHEMICALLY APPLIED OR PLATED FINISHES		DECIMALS	FRACTIONS
		.X ± .05	± 1/64
		.XX ± .01	± 1/64
		.XXX ± .005	± 0° 30'
DRAWN	J. LESHINSKI	DATE	1/4/64
CHECKED	@	DATE	3-10-64
ELECT. DES.		DATE	3-10-64
MECH. DES.		DATE	3-10-64
FINAL APPROVAL		DATE	3/10/64
RAC		PX-837 B	
SHEET		REV. LTR.	

NOTES

THE CONTENTS OF THIS DRAWING ARE THE EXCLUSIVE PROPERTY  
OF THE TECHNICAL MATERIEL CORP. ITS UNAUTHORIZED USE OR  
REPRODUCTION IN WHOLE OR IN PART IS STRICTLY FORBIDDEN.

PX-837 B

INSTALL USING  
HELF-COIL TOOL  
NO. 7551-06/34