

THE CONTENTS OF THIS DRAWING ARE THE EXCLUSIVE PROPERTY OF THE TECHNICAL MATERIEL CORP. ITS UNAUTHORIZED USE FOR REPRODUCTION IN WHOLE OR IN PART IS STRICTLY FORBIDDEN.

REQ. PER UNIT

USED ON

MODEL

ASS'Y. NO.

DATE

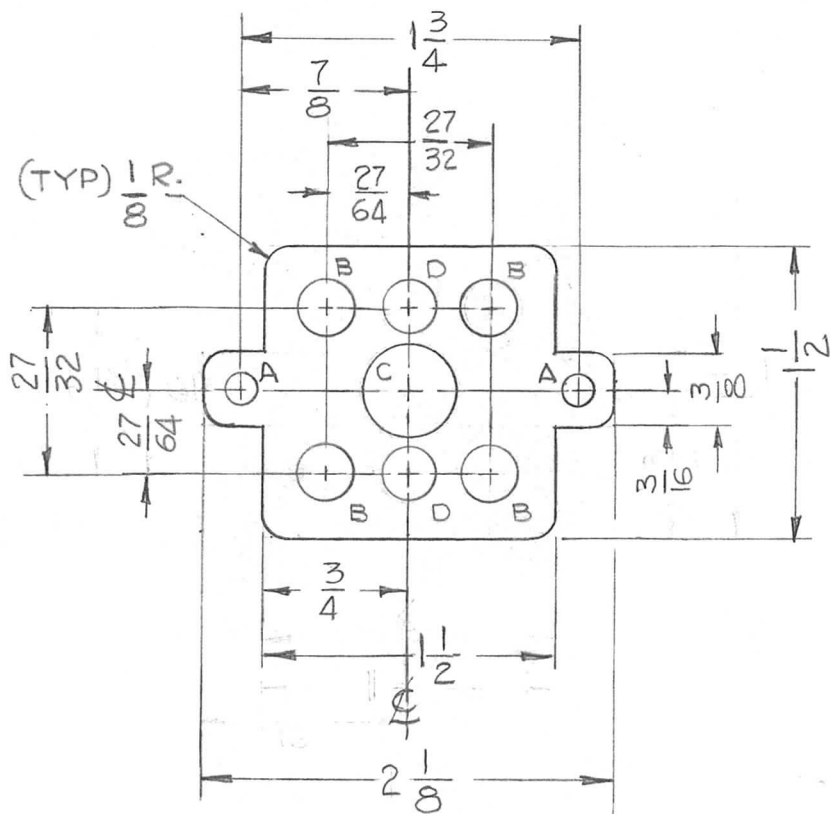
1

GPR-92

6-13-63

PX-827

A



HOLE	DESCRIPTION	REQ'D
A	5/32 DIA.	2
B	3/8 DIA.	4
C	1/2 DIA.	1
D	17/64 DIA.	2

REQ.	ITEM	PART NO.	DESCRIPTION	SYMBOL							
		1/16 THK STOCK SIZE	THE TECHNICAL MATERIEL CORP. MAMARONECK, NEW YORK								
		PHENOLIC	INSULATOR, I F								
		MATERIAL									
A	IN HOLE CHART 3/8 D. WAS 9/32 D. & 1/2 D. WAS 31/64 D.	10/14/63 10186	<i>[Signature]</i> <i>[Signature]</i>								
SYM	DESCRIPTION	DATE	CH. NO.	DRAFTS	CHECKER	ENG. APP.	XXX P	G.D.L.	<i>[Signature]</i> 7/8/63	<i>[Signature]</i> 7.9.63	
UNLESS OTHERWISE SPECIFIED DIMENSIONS ARE IN INCHES AND INCLUDE CHEMICALLY APPLIED OR PLATED FINISHES							SCALE	1:1			
DECIMALS	TOLERANCES		FRACTIONS	CODE		NATURAL		DRAWN		CHECKED	FINAL APPROVAL
.X ± .05			± 1/64			FINISH & SPEC. NO.		ELEC. DES. APP.		MECH. DES. APP.	PX-827 A
.XX ± .01			ANGLES								
.XXX ± .005			± 0° 30'								