

THE CONTENTS OF THIS DRAWING ARE THE EXCLUSIVE PROPERTY OF THE TECHNICAL MATERIEL CORP. ITS UNAUTHORIZED USE FOR REPRODUCTION IN WHOLE OR IN PART IS STRICTLY FORBIDDEN.

REQ. PER UNIT

2

USED ON

MODEL

GPR-92

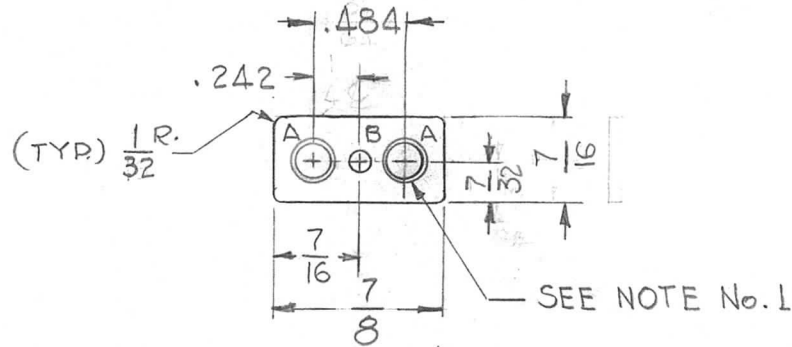
ASS'Y. NO.

DATE

6-13-63

PX-826

HOLE	DESCRIPTION	REQ'D
A	.171 ± .002 DIA.	2
B	3/32 DIA.	1



- NOTE -

- 1) DEBURR ONE EDGE OF "A" HOLES AS SHOWN

REQ.	ITEM	PART NO.	DESCRIPTION	SYMBOL								
		1/16 THK	THE TECHNICAL MATERIEL CORP. MAMARONECK, NEW YORK									
		STOCK SIZE										
		PHENOLIC	INSULATOR XTAL MOUNTING									
		MATERIAL										
SYM	DESCRIPTION	DATE	CH. NO.	DRAFTS	CHECKER	ENG. APP.	XXXP	G.D.L.	7/8/63	JFH	7.8.63	
UNLESS OTHERWISE SPECIFIED DIMENSIONS ARE IN INCHES AND INCLUDE CHEMICALLY APPLIED OR PLATED FINISHES							SCALE	1:1				
DECIMALS .X ± .05 .XX ± .01 .XXX ± .005							TOLERANCES	FRACTIONS ± 1/64 ANGLES ± 0° 30'	CODE			
							TYPE & TEMPER	HEAT TREAT. SPEC.	DRAWN	CHECKED	FINAL APPROVAL	
							NATURAL		JMA	7/8/63	PX-826	
							FINISH & SPEC. NO.	ELEC. DES. APP.	MECH. DES. APP.			