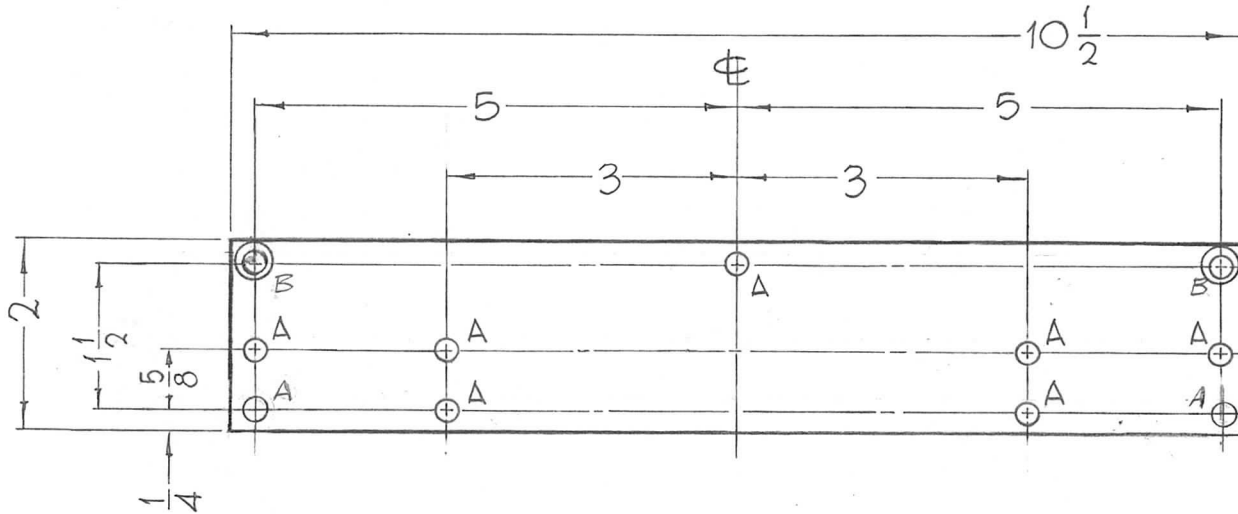
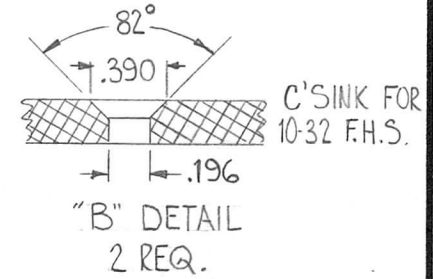


REQ. PER UNIT	USED ON			PX-771 A
	MODEL	ASS'Y. NO.	DATE	
2	TER-18K/600BF		8-20-63	



HOLES REQ.  
A-15/64 DIA. 9



FUNGUS PROOFING PER  
TMC SPECIFICATION S-113

REQ. ITEM	PART NO.	F. BUDETTI DESCRIPTION		SYMBOL					
A	RELOCATE 2 A'S 2 B HOLES	8/11/65	14540	H.V.V. JCB					
Ø	ORIGINAL RELEASE FOR PRODUCTION	4/2/65	-A	SRG					
X2	TER-18K600BF WAS TER-15K600BF	1-13-64		SRG					
SYM	DESCRIPTION	DATE	CH. NO.	DRAFTS	CHECKER	ENG. APP.	MATERIAL		
UNLESS OTHERWISE SPECIFIED DIMENSIONS ARE IN INCHES AND INCLUDE CHEMICALLY APPLIED OR PLATED FINISHES		SCALE		1/2" = 1"		XXXP		John C. Biele	JCB
TOLERANCES		FRACTIONS		CODE		NATURAL			
.X ± .05		± 1/64				FINISH & SPEC. NO.		ELEC. DES. APP.	MECH. DES. APP.
.XX ± .01		ANGLES							
.XXX ± .005		± 0° 30'							
								PX-771 A	