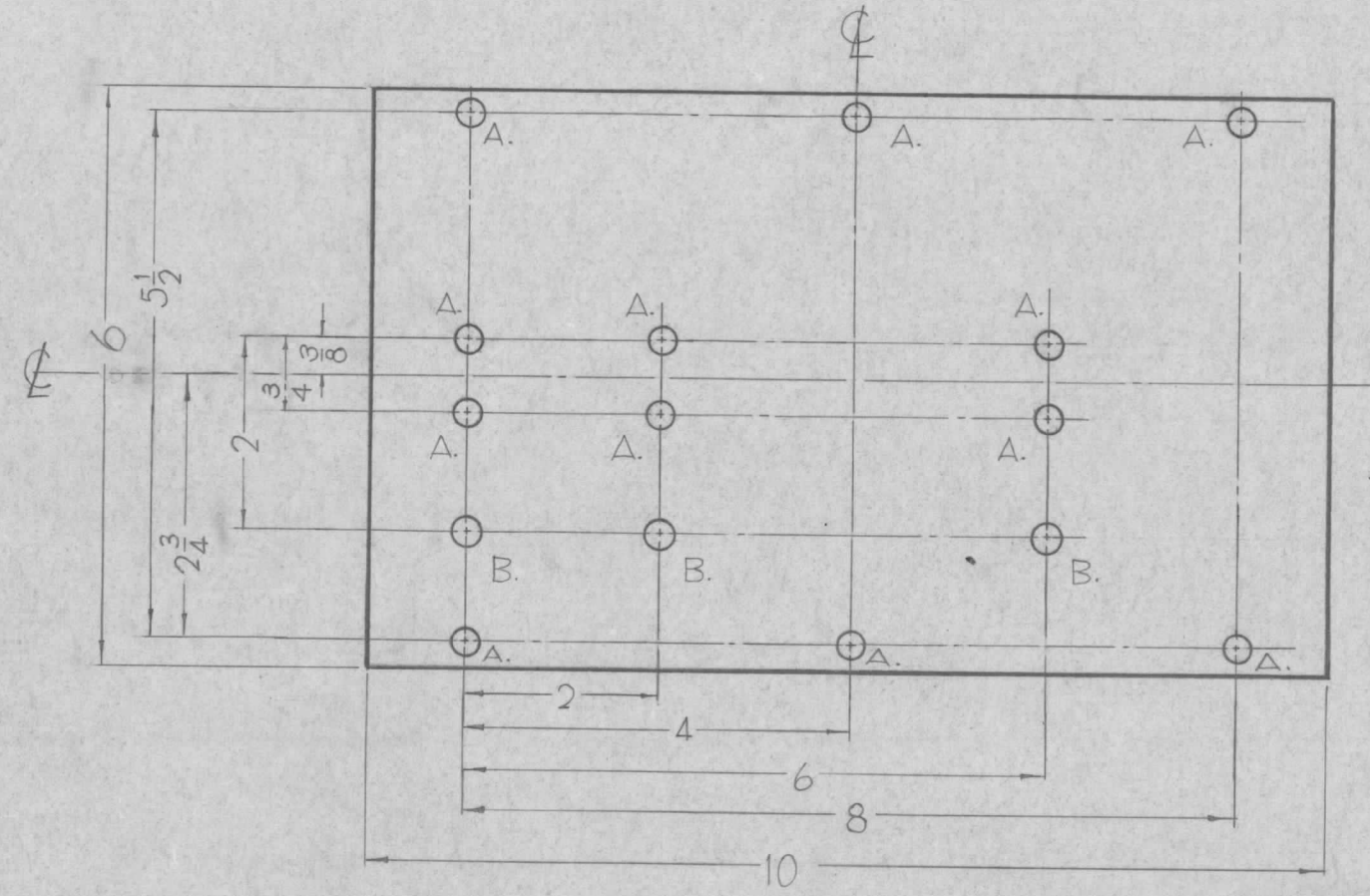


PX-725 0

REVISIONS

SYM	DESCRIPTION	DATE	E.M.N. NO.	DRAFT	CHKD	APPD
0	ORIGINAL RELEASE FOR PRODUCTION	5.18.64		LSB		



FRONT VIEW SHOWN

HOLES REQ.  
 A. 7/32 (.218)D. 12  
 B. 1/4 (.250)D. 3

REF-TMC DWG. LD-1237, 1238

Q'TY./UNIT	MODEL USED ON CODE	ASS'Y. NO.
1	GPT-200K	AP-111
1	GPT-200K	AP-109

THE CONTENTS OF THIS DRAWING ARE THE EXCLUSIVE PROPERTY OF THE TECHNICAL MATERIEL CORP. ITS UNAUTHORIZED USE OR REPRODUCTION IN WHOLE OR IN PART IS STRICTLY FORBIDDEN.

REQ'D.	ITEM	PART NUMBER	DESCRIPTION	SYMBOL
F. BUDETT LIST OF MATERIAL				
MATERIAL 1/2 THICK G-11 EPOXY			THE TECHNICAL MATERIEL CORP. MAMARONECK, NEW YORK	
FINISH NATURAL			TITLE BOADD. HV. CONTACTS MTG. L. (CROWBAR) MATING	
UNLESS OTHERWISE SPECIFIED DIMENSIONS ARE IN INCHES AND INCLUDE CHEMICALLY APPLIED OR PLATED FINISHES			DRAWN J.F. VITDO	DATE
DECIMALS .X ± .05 .XX ± .01 .XXX ± .005			CHECKED qa	DATE
FRACTIONS ± 1/64 ANGLES ± 0° 30'			ELECT. DES. JFB	DATE 3/16/64
TOLERANCES			MECH. DES. me 2/5/64	DATE
			FINAL APPROVAL RSC	DATE
			PX-725	0
			SHEET	REV. LTR.

NOTES