

THE CONTENTS OF THIS DRAWING ARE THE EXCLUSIVE PROPERTY OF THE TECHNICAL MATERIEL CORP. ITS UNAUTHORIZED USE FOR REPRODUCTION IN WHOLE OR IN PART IS STRICTLY FORBIDDEN.

REQ. PER UNIT

1

USED ON

MODEL

GPT-200K

ASS'Y. NO.

AS-124

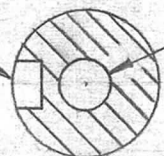
DATE

1-30-63

PX-707

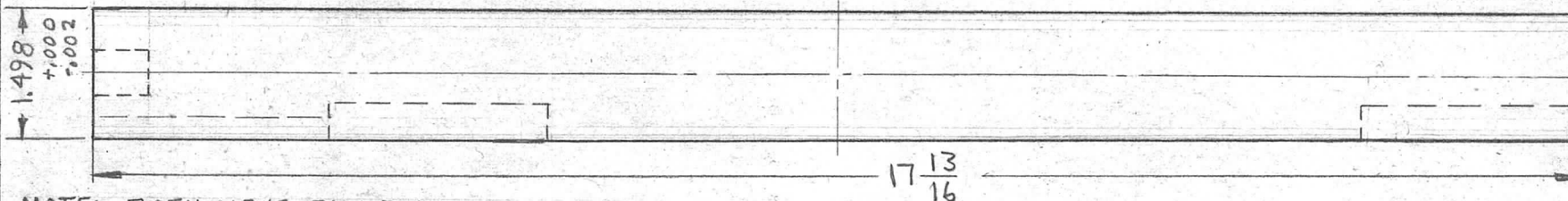
A

1/4 W x 1/4 DP.

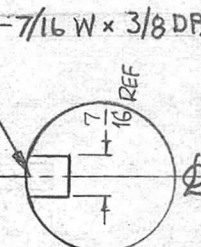
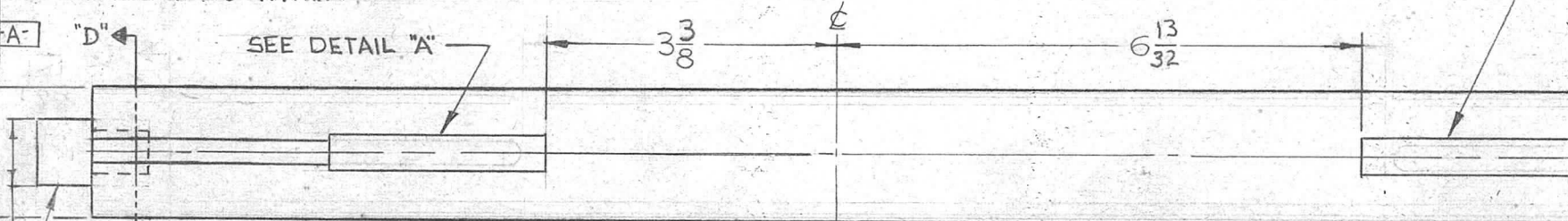


1/2 DIA. (DRILLED TO MATE SECURELY WITH DETAIL "B")

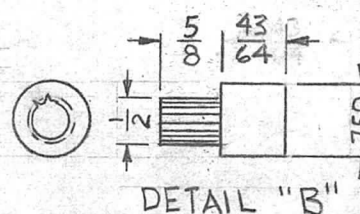
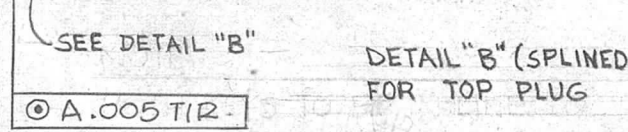
SECTION "D-D"



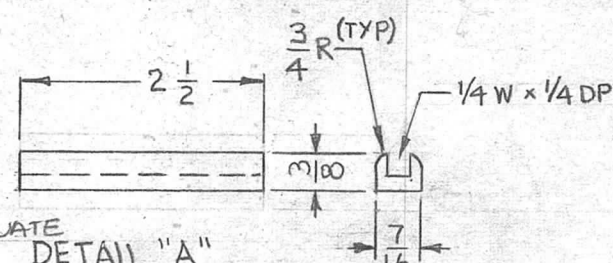
NOTE: BOTH KEYS TO BE IN LINE TO WITHIN  $\pm 0.2^\circ$



NOTE: TOP PLUG & KEYWAY INSERTS TO BE STAKED SECURELY.



ST. STL. NON MAGNETIC, 303 (DETAILS "A" & "B")  
FINISH S104 PASSIVATE (BEFORE ASS'Y)



© A.005 TIR.

REQ. ITEM	PART NO.	F. BUDETTI	DESCRIPTION	SYMBOL				
A	COMPLETELY REVISED	3-8-65	13628	SL. <i>gcb</i>	1-1/2" DIA.	THE TECHNICAL MATERIEL CORP. MAMARONECK, NEW YORK SHAFT, BANDSWITCH (SM)		
O	ORIG. RELEASE FOR PROD	5-16-64		SRG	STOCK SIZE			
XI	SHAFT DIA. WAS 1-1/2				MYCALEX			
SYM	DESCRIPTION	DATE	CH. NO.	DRAFTS	CHECKER		ENG. APP.	
UNLESS OTHERWISE SPECIFIED DIMENSIONS ARE IN INCHES AND INCLUDE CHEMICALLY APPLIED OR PLATED FINISHES		SCALE						
		1/2" = 1"						
DECIMALS .X $\pm .05$ .XX $\pm .01$ .XXX $\pm .005$		FRACTIONS $\pm 1/64$ ANGLES $\pm 0^\circ 30'$		TOLERANCES		CODE		
SUPRA MICA-500		HEAT TREAT. SPEC.		DRAWN		CHECKED		
FINISH & SPEC. NO.		ELEC. DES. APP.		MECH. DES. APP.		PX-707 A		