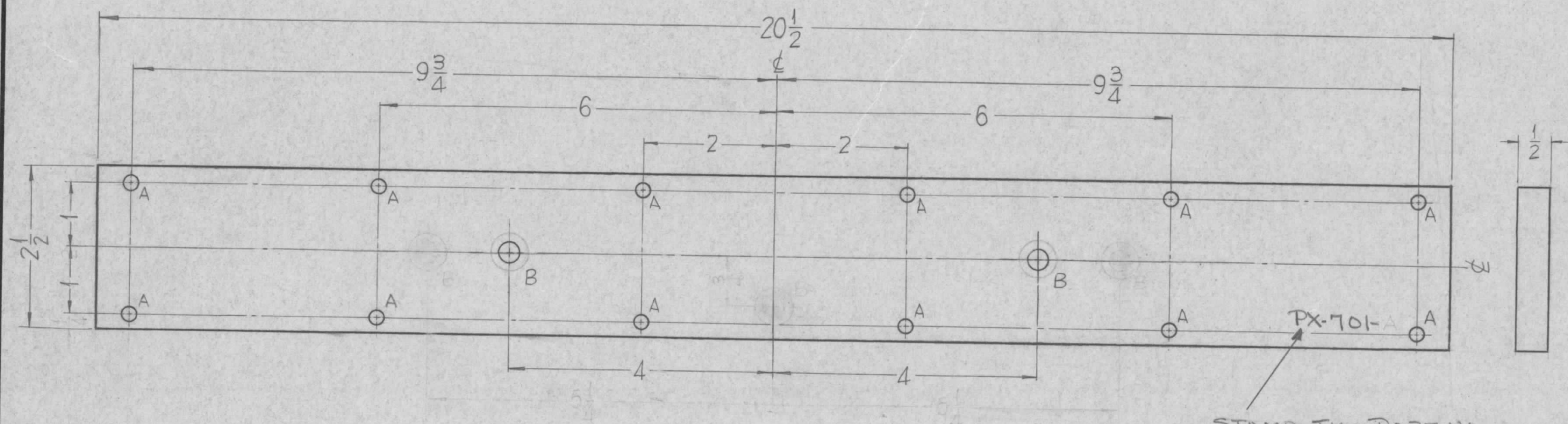


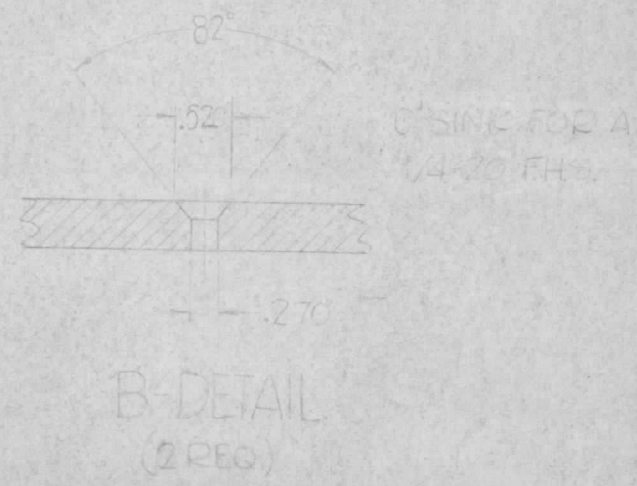
PX-701

REVISIONS						
SYM	DESCRIPTION	DATE	E.M.N. NO.	DRAFT	CHKD	APPD
A	"A" HOLES WERE $1\frac{3}{64}$ DIA.	8-2-63	9700	AK	JW	LB
B	(B) HOLES WERE $\frac{1}{4}$ -20 C'SINK; STAMPING UPDATED	2-1-65	13377	AK	JW	LB



HOLES:
 A ~ $7/32$ DIA. — 12 REQ.
 B ~ $9/32$ DIA. — 2 REQ.

STAMP TMC PART NO
 $1/8$ HIGH BLACK GOTHIC,
 WITH LATEST REVISION
 LETTER.



FINISHING -
 LACQUER ALL EDGES EXPOSED BY MACHINING AND CUTTING
 USING TMC FINISH S-113-FUNGUS RESISTANT VARNISH.

2	TER-5000-300U	A-3130
Q'TY./UNIT	MODEL USED ON	ASS'Y. NO.
SCALE	CODE	

THE CONTENTS OF THIS DRAWING ARE THE EXCLUSIVE PROPERTY
 OF THE TECHNICAL MATERIEL CORP. ITS UNAUTHORIZED USE OR
 REPRODUCTION IN WHOLE OR IN PART IS STRICTLY FORBIDDEN.

REQ'D.	ITEM	PART NUMBER	DESCRIPTION	SYMBOL
F. BUDETTI				
MATERIAL			LIST OF MATERIAL	
1/2" PHENOLIC XXXP			THE TECHNICAL MATERIEL CORP. MAMARONECK, NEW YORK	
FINISH			TITLE	
NATURAL SEMI-GLOSS			INSULATOR SUPPORT, TOP	
UNLESS OTHERWISE SPECIFIED DIMENSIONS ARE IN INCHES AND INCLUDE CHEMICALLY APPLIED OR PLATED FINISHES			DRAWN SRG	DATE 3-5-63
DECIMALS .X ± .05 .XX ± .01 .XXX ± .005			CHECKED DA	DATE
FRACTIONS ± 1/64 ANGLES ± 0° 30'			ELECT. DES. SA	DATE
TOLERANCES			MECH. DES. SA	DATE
			FINAL APPROVAL BP	DATE
			PX-701	B
			SHEET	REV. LTR.

NOTES