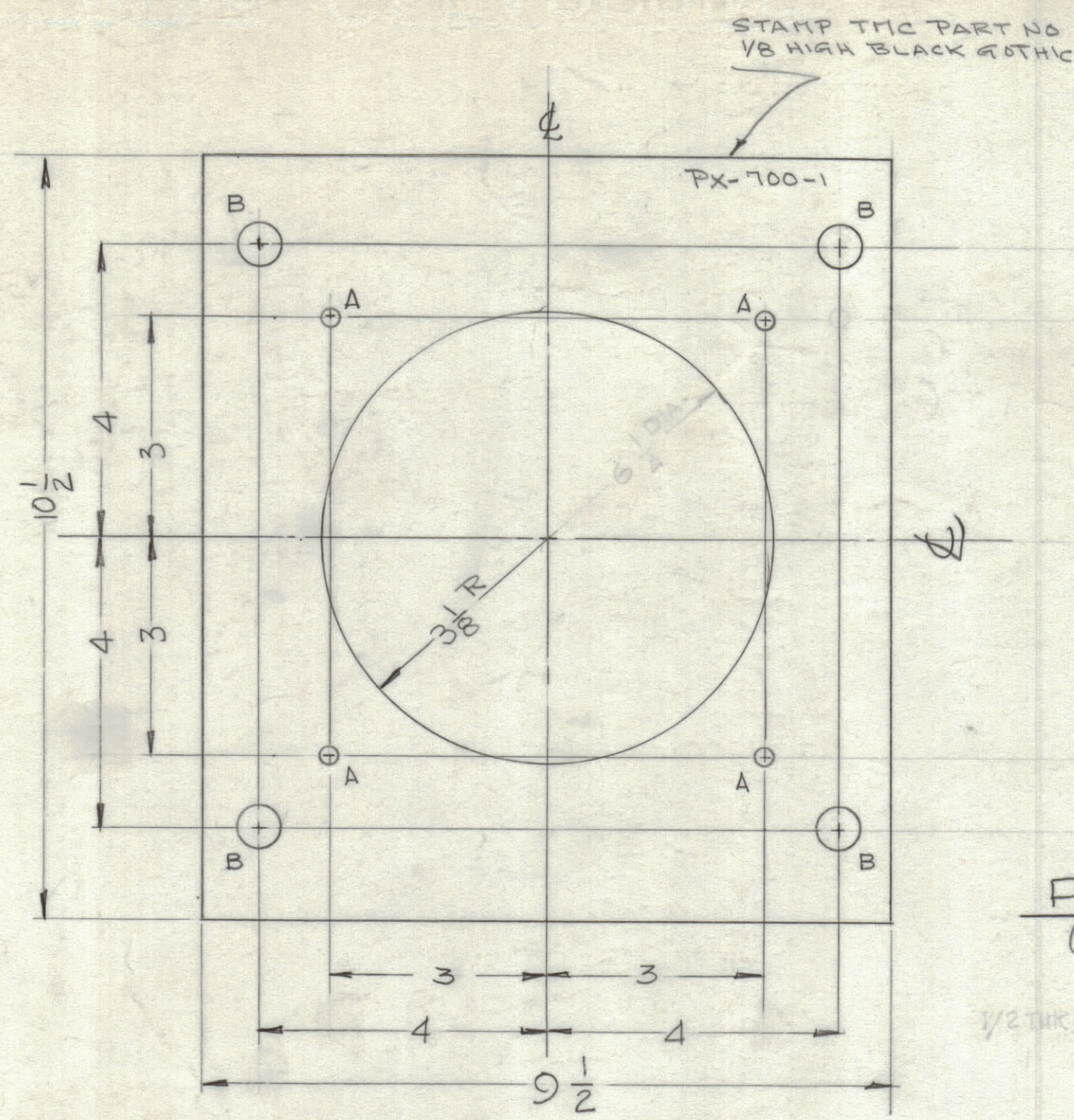


REVISIONS						
ZONE	SYM	DESCRIPTION	DATE	E.M.N. NO.	DRAFT	CHKD APPD



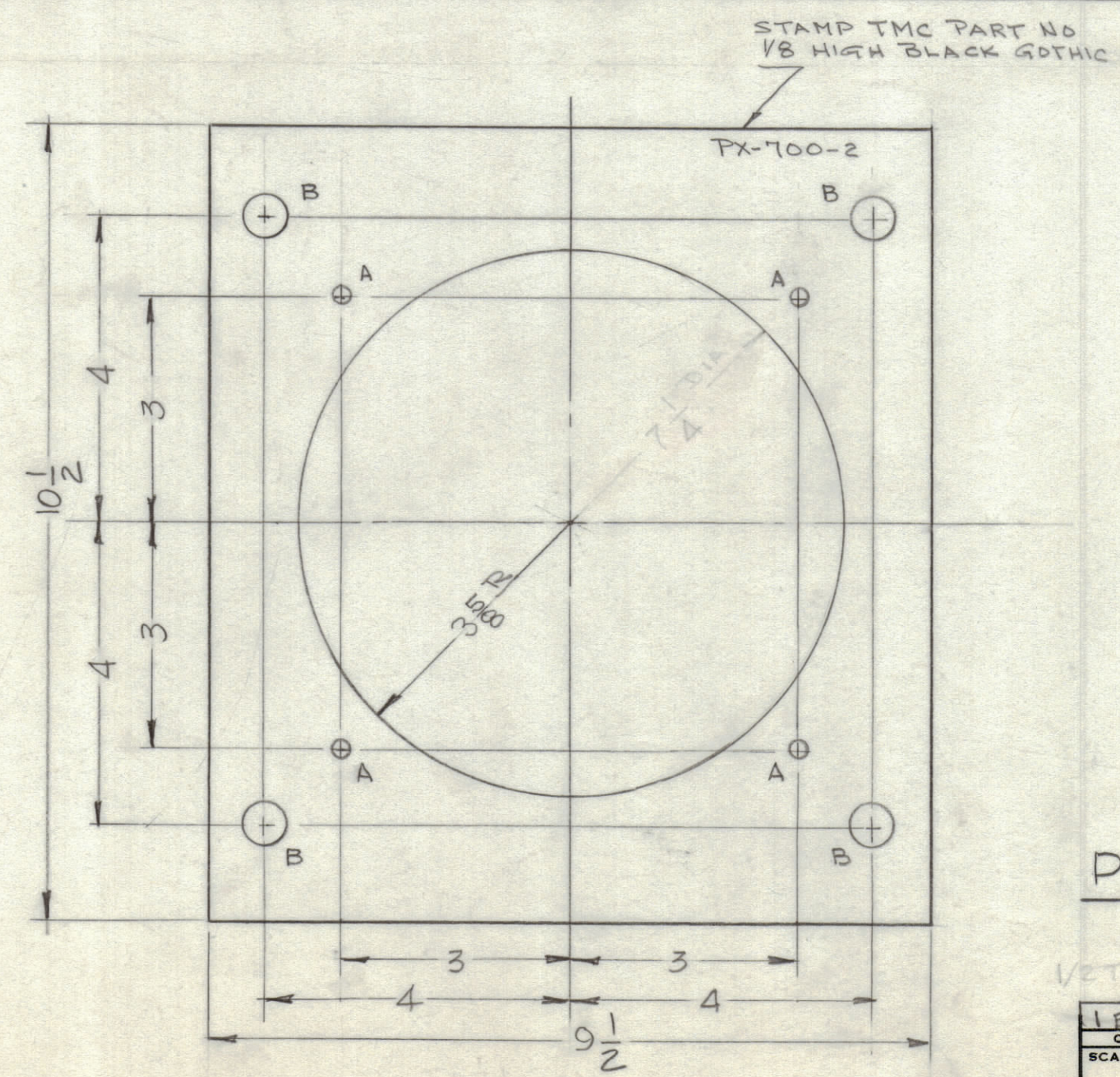
PX-700-1
(1 REQ)

1/2 THK, XXXP PHENOLIC - FINISH: NATURAL

HOLE	DESCRIPTION	REQ'D.
A	13/64 DIA.	4
B	9/16 DIA.	4

NOTE: LACQUER ALL EDGES EXPOSED BY MACHINING & CUTTING
S-113 FUNGUS RESISTANT VARNISH
FINISH: NATURAL

PX-700



PX-700-2
(1 REQ)

1/2 THK, XXXP PHENOLIC - FINISH: NATURAL

HOLE	DESCRIPTION	REQ'D.
A	13/64 DIA.	4
B	9/16 DIA.	4

NOTE: LACQUER ALL EDGES EXPOSED BY MACHINING & CUTTING
S-113 FUNGUS RESISTANT VARNISH
FINISH: NATURAL

LEACH	TEB-5000-3000	A-3130
QTY./UNIT	MODEL USED ON	ASS'Y. NO.
SCALE	CODE	

THE CONTENTS OF THIS DRAWING ARE THE EXCLUSIVE PROPERTY OF THE TECHNICAL MATERIEL CORP. ITS UNAUTHORIZED USE OR REPRODUCTION IN WHOLE OR IN PART IS STRICTLY FORBIDDEN.

NOTES

REQ'D.	ITEM	PART NUMBER	DESCRIPTION	SYMBOL
F. BUDETTI LIST OF MATERIAL				
MATERIAL		THE TECHNICAL MATERIEL CORP. MAMARONECK, NEW YORK		
FINISH		TITLE		
UNLESS OTHERWISE SPECIFIED DIMENSIONS ARE IN INCHES AND INCLUDE CHEMICALLY APPLIED OR PLATED FINISHES		DRAWN GDL DATE 3-9-63 FINAL APPROVAL BP DATE		
DECIMALS .X ± .05 .XX ± .01 .XXX ± .005		TOLERANCES ± 1/64 ANGLES ± 0° 30'		ELECT. DES. DATE MECH. DES. DATE
SHEET				REV. LTR.

PX-700