

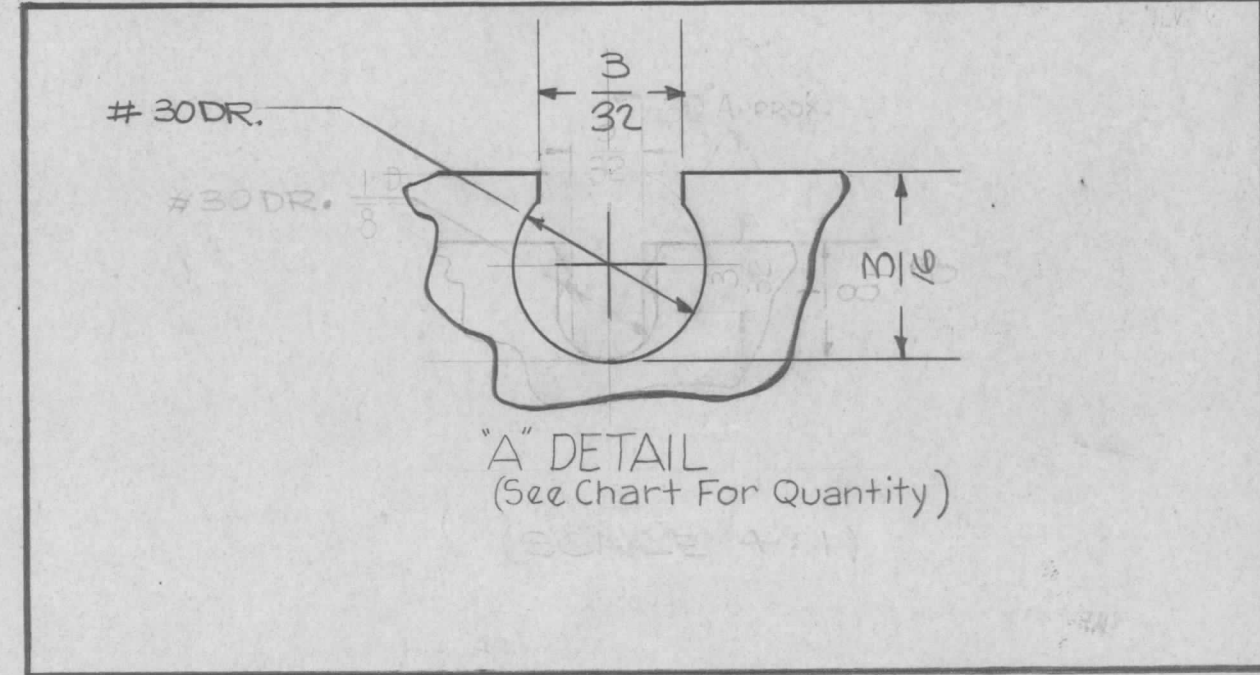
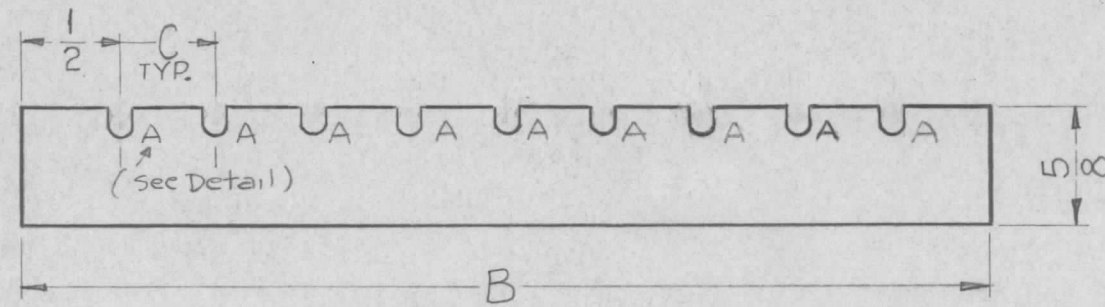
PX-605 B

TMC PART NO.	"A" QUAN. REQ.	"B"	"C"	USED ON
PX-605-1	10	4 ³ / ₁₆	.359	CL-266
PX-605-2	9	3 ¹³ / ₁₆	.359	CL-266
PX-605-3	10	5 ¹ / ₂	¹ / ₂	CL-267
PX-605-4	9	5	¹ / ₂	CL-267

NOTICE TO PERSONS RECEIVING THIS DRAWING

THE TECHNICAL MATERIEL CORPORATION claims proprietary right in the material disclosed hereon. This drawing is issued in confidence for engineering information only and may not be reproduced or used to manufacture anything shown hereon without permission from THE TECHNICAL MATERIEL CORPORATION to the user. This drawing is loaned for mutual assistance and is subject to recall at any time.

Property of:
THE TECHNICAL MATERIEL CORPORATION
MAMARONECK, NEW YORK



SYM	DESCRIPTION	DATE	CH. NO.	DRAFTS	CHECKER	ENG. APP.
B	DIM. 3/16 WAS 1/8. ("A" DETAIL)	11/7/65	15215	H.V.V.	J.C.B.	[Signature]
A	"A" DETAIL COMPLETELY REVISED	6/19/65	14203	[Signature]	[Signature]	[Signature]

UNLESS OTHERWISE SPECIFIED:
DIMENSIONS ARE IN INCHES
TOLERANCES ON FRACTIONS ± 1/64 DECIMALS ± .005 ANGLES ± 1/2°

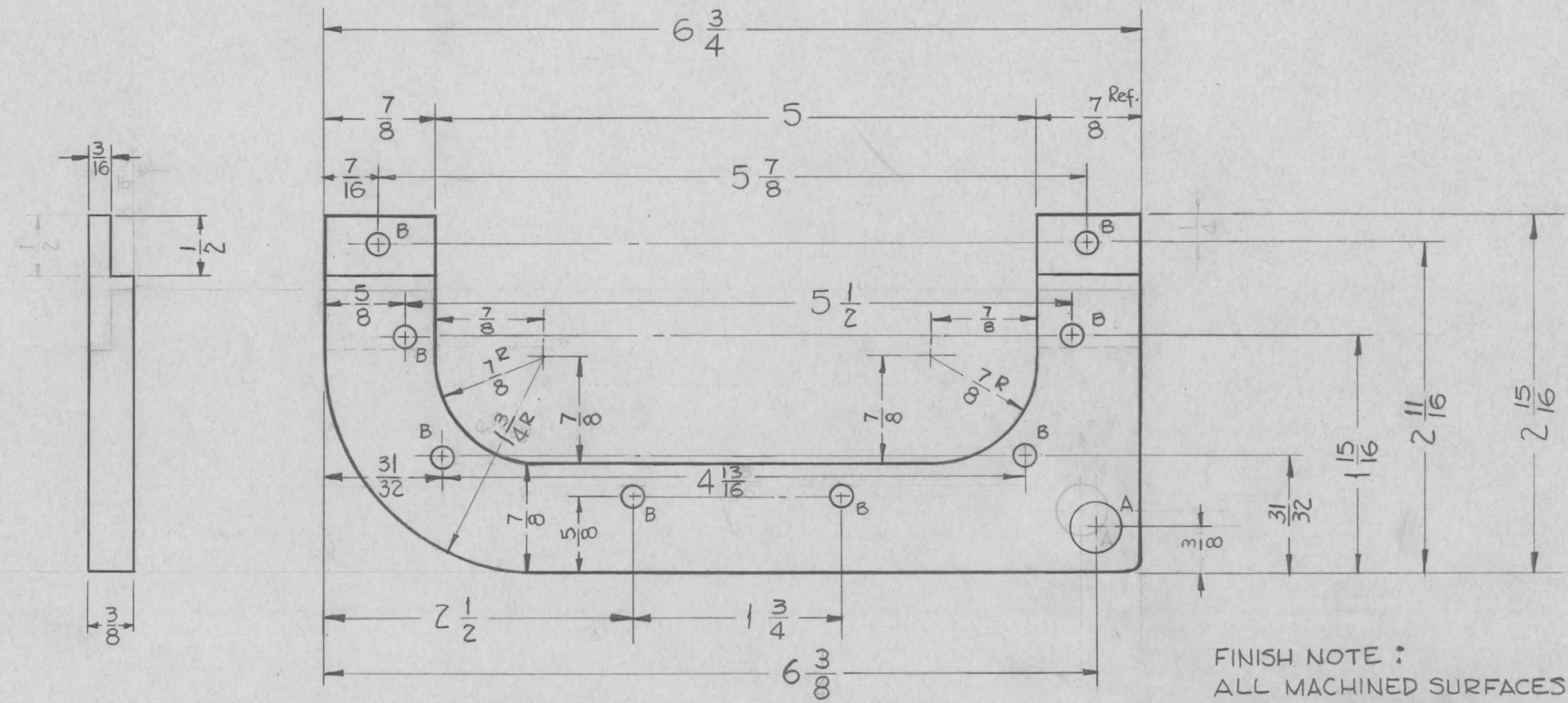
SCALE:
MAXIMUM ALLOWABLE TOLERANCES HAVE BEEN DETERMINED AND ANY DEVIATIONS WILL BE CAUSE FOR REJECTION. REMOVE ALL BURRS AND SHARP EDGES

REQ. PER UNIT	MODEL	SECTION	ASS'Y. NO.	DATE
	TER-3500-300			2-6-61

REQ.	ITEM	PART NO.	DESCRIPTION	SYMBOL										
		1/8" THK STOCK SIZE	THE TECHNICAL MATERIEL CORP. MAMARONECK, NEW YORK											
		TEFLON MATERIAL	SPACER, COIL											
			<table border="1"> <tr> <td>TYPE & TEMPER</td> <td>HEAT TREAT. SPEC.</td> <td>DRAWN</td> <td>CHECKER</td> <td>FINAL APPROVAL</td> </tr> <tr> <td></td> <td></td> <td>[Signature]</td> <td>[Signature]</td> <td>2B</td> </tr> </table>	TYPE & TEMPER	HEAT TREAT. SPEC.	DRAWN	CHECKER	FINAL APPROVAL			[Signature]	[Signature]	2B	
TYPE & TEMPER	HEAT TREAT. SPEC.	DRAWN	CHECKER	FINAL APPROVAL										
		[Signature]	[Signature]	2B										
			ELEC. DES. APP. MECH. DES. APP.	PX-605 B										

PX-620 B

A- $\frac{13}{32}$ DIA 1 REQ
 B-.199 DIA 8 REQ



FINISH NOTE :
 ALL MACHINED SURFACES
 TO BE COATED WITH GL-104-2
 AND BAKED AT 250°F FOR
 1 HOUR.

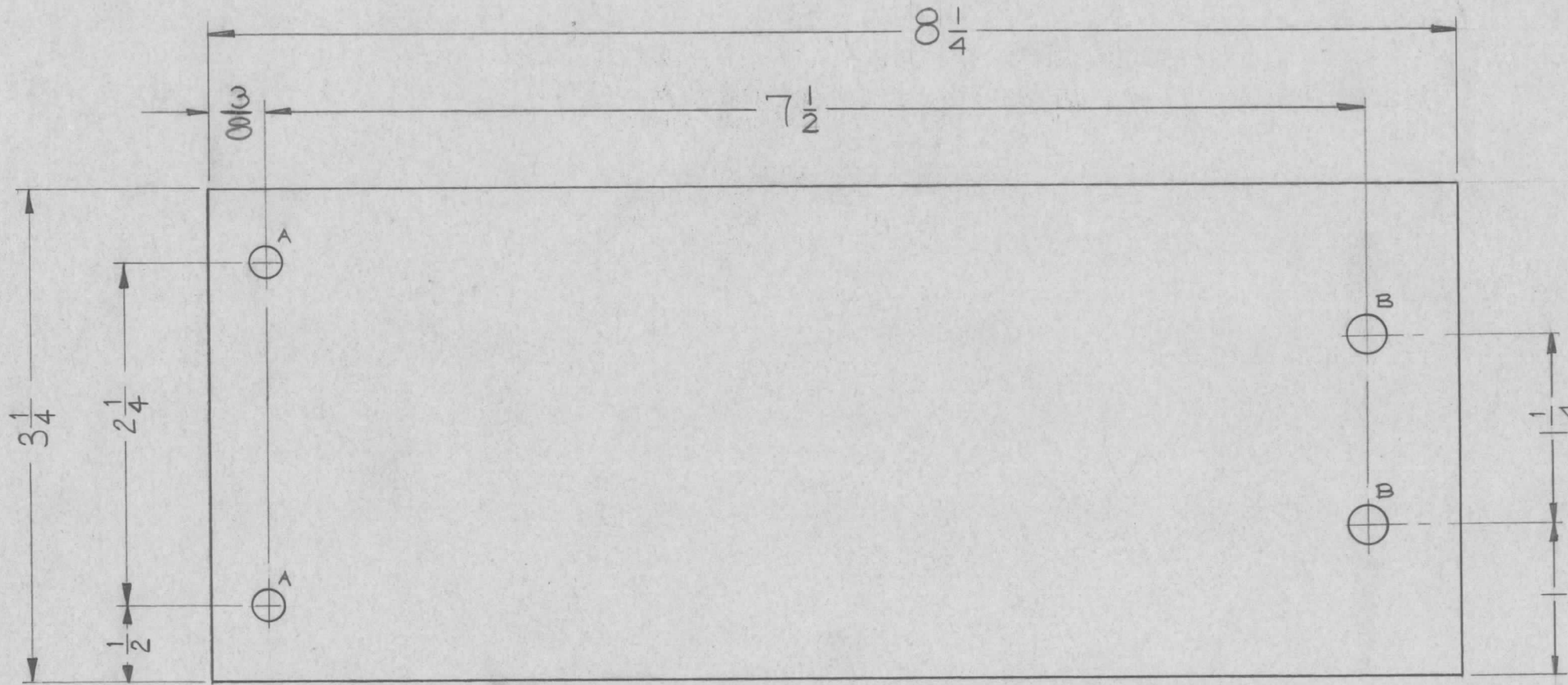
B	ON FINISH NOTE: COATED WITH, WAS Q85	8.864	12051	WJB	7/10	OK
A	6-3/8 Dim. Was 6-1/4; 3/8 Dim. Was 1/2 B Holes Were .193 Dia, Note Revised	11-30-61	5981	E.L.	OK	OK
SYM	DESCRIPTION	DATE	CH. NO.	DRAFTS	CHECKER	ENG. APP.
UNLESS OTHERWISE SPECIFIED:		SCALE:				
DIMENSIONS ARE IN INCHES		MAXIMUM ALLOWABLE TOLERANCES HAVE BEEN DETERMINED AND ANY DEVIATIONS WILL BE CAUSE FOR REJECTION.				
TOLERANCES ON FRACTIONS ± 1/64 DECIMALS ± .005 ANGLES ± 1/2°		REMOVE ALL BURRS AND SHARP EDGES				

4	TRC-20 K			9-22-61
REQ. PER UNIT	MODEL	SECTION	ASS'Y. NO.	DATE
USED ON				

REQ. ITEM	PART NO.	DESCRIPTION		SYMBOL
	3/8	THE TECHNICAL MATERIEL CORP.		
	STOCK SIZE	MAMARONECK, NEW YORK		
	SILICON GLASS	RING, CAGE, STUD MTG.		
	MATERIAL			
G7		RUIZZO	ALB	OK
TYPE & TEMPER	HEAT TREAT. SPEC.	DRAWN	CHECKER	FINAL APPROVAL
SEE NOTE		RELW	IB	PX-620 B
FINISH & SPEC. NO.		ELEC. DES. APP.	MECH. DES. APP.	

PX-622A

HOLE	REQ'D.
A - $\frac{13}{64}$ DIA.	2
B - $\frac{1}{4}$ DIA.	2



SYM	DESCRIPTION	DATE	CH. NO.	DRAFTS	CHECKER	ENG. APP.
△	3/8 DIM. WAS 5/8; 7-1/2 DIM. WAS 7-1/4	2-23-62	6440	EE	<i>[Signature]</i>	<i>[Signature]</i>

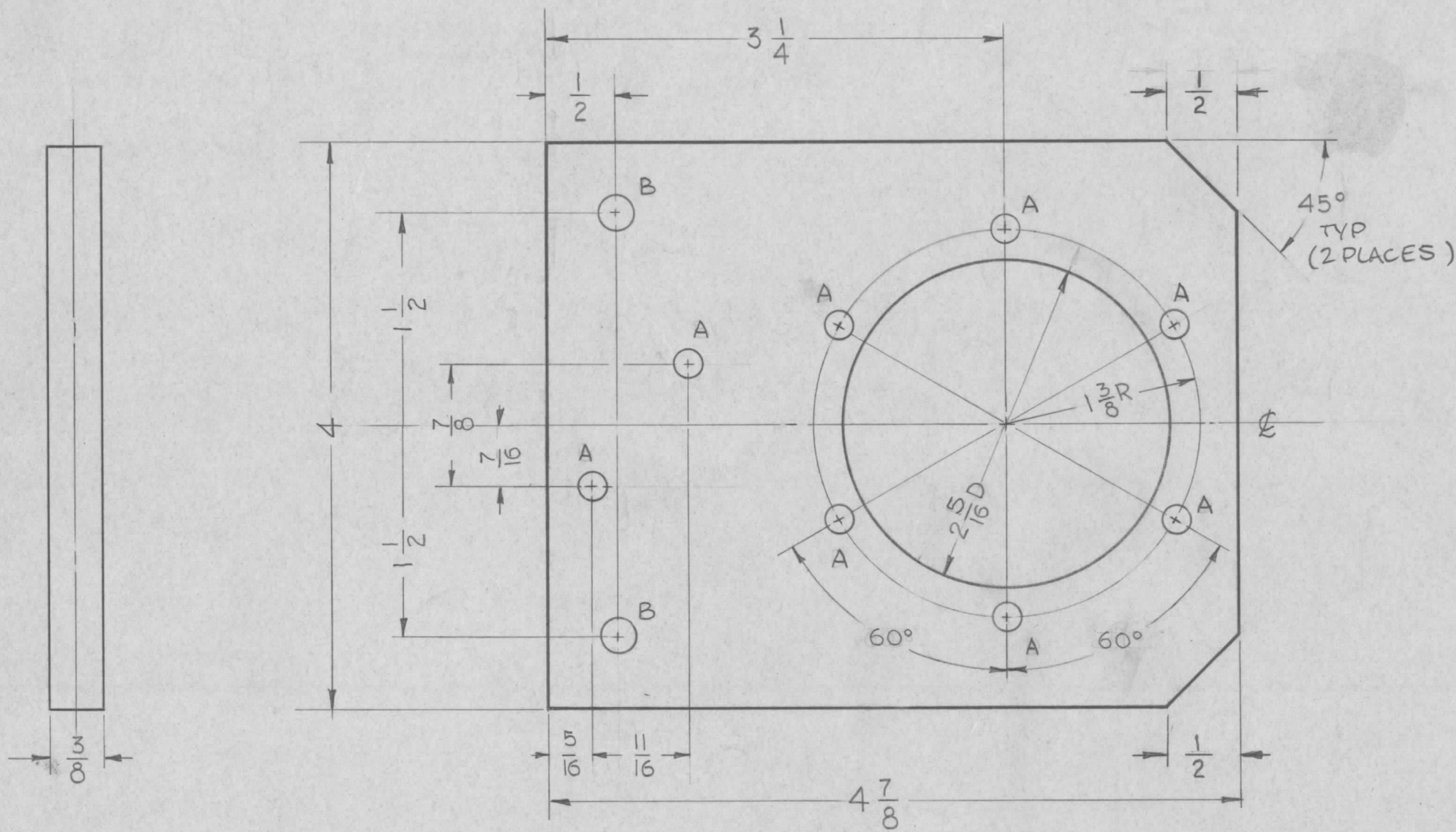
UNLESS OTHERWISE SPECIFIED:
 DIMENSIONS ARE IN INCHES
 TOLERANCES ON
 FRACTIONS $\pm 1/64$ DECIMALS $\pm .005$ ANGLES $\pm 1/2^\circ$

SCALE:
 MAXIMUM ALLOWABLE TOLERANCES HAVE BEEN DETERMINED AND ANY DEVIATIONS WILL BE CAUSE FOR REJECTION.
 REMOVE ALL BURRS AND SHARP EDGES

REQ. PER UNIT	6	MODEL	TER-25K/50	SECTION	ASS'Y. NO.	DATE	10-6-61
USED ON							

REQ. ITEM	PART NO.	DESCRIPTION			SYMBOL
	$\frac{1}{4}$	THE TECHNICAL MATERIEL CORP. MAMARONECK, NEW YORK			
	STOCK SIZE				
	SILICONE GLASS	INSULATOR, TOP PLATE			
	MATERIAL				
G-7		EE	<i>[Signature]</i>	LB/FB	
TYPE & TEMPER	HEAT TREAT. SPEC.	DRAWN	CHECKER	FINAL APPROVAL	
		aa	<i>[Signature]</i>	PX-622	
FINISH & SPEC. NO.	ELEC. DES. APP.	MECH. DES. APP.			

PX-625 B



HOLES -
 A ~ 3/16 DIA. 8 Req.
 B ~ 15/64 DIA. 2 Req.
 D ~ 3/16 DIA. 2 Req.

REF ~ TMC DWG. NO. LD-982 (1), LD2110

B	ON PICT. 1/2" DIM. ADD TO 45° NOTCHES TYP.	10-21-64	12679	8.1	<i>QC</i>	<i>QC</i>
A	6(A) Holes Were 3/16 DIA. (D) Holes 2(B) Holes Were (C) Holes	2-21-62	6423	4.4	<i>QC</i>	<i>QC</i>
SYM	DESCRIPTION	DATE	CH. NO.	DRAFTS	CHECKER	ENG. APP.

UNLESS OTHERWISE SPECIFIED:
 DIMENSIONS ARE IN INCHES
 TOLERANCES ON
 FRACTIONS ± 1/64 DECIMALS ± .005 ANGLES ± 1/2°
 SCALE:
 MAXIMUM ALLOWABLE TOLERANCES HAVE BEEN DETERMINED AND ANY DEVIATIONS WILL BE CAUSE FOR REJECTION.
 REMOVE ALL BURRS AND SHARP EDGES

2	GPT-40K	MODE SW	AX-238	7-11-61
REQ. PER UNIT	MODEL	SECTION	ASS'Y. NO.	DATE
USED ON				

REQ. ITEM	PART NO.	DESCRIPTION			SYMBOL
	3/8	THE TECHNICAL MATERIEL CORP. MAMARONECK, NEW YORK			
STOCK SIZE		PLATE, CAPACITOR MTG. LOAD RESISTOR			
SILICONE GLASS		MATERIAL			
G7		G.D.L.	<i>QC</i>	<i>QC</i>	
TYPE & TEMPER		HEAT TREAT. SPEC.	CHECKER	FINAL APPROVAL	
			<i>QC</i>	PX-625 B	
FINISH & SPEC. NO.		ELEC. DES. APP.	MECH. DES. APP.		

PX-632 A

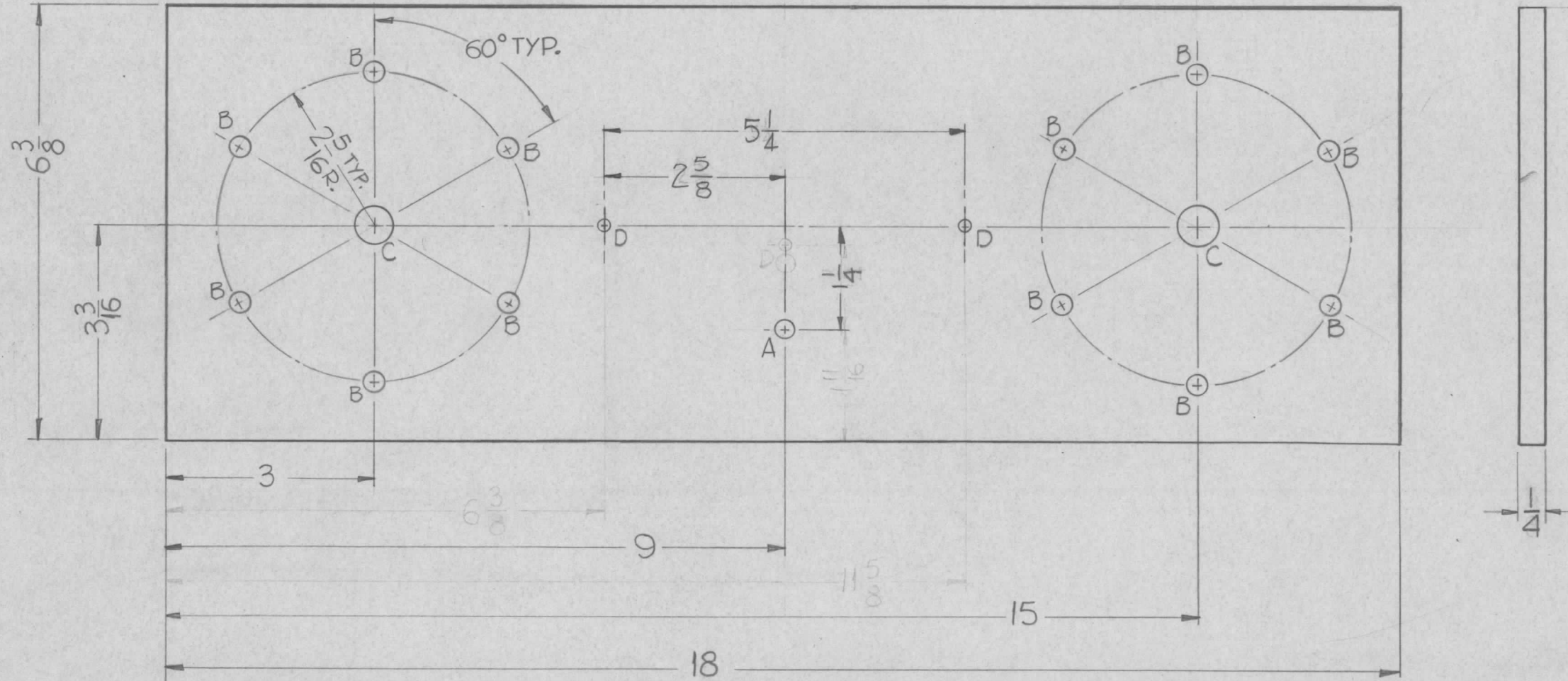
NOTICE TO PERSONS RECEIVING THIS DRAWING

THE TECHNICAL MATERIEL CORPORATION claims proprietary right in the material disclosed hereon. This drawing is issued in confidence for engineering information only and may not be reproduced or used to manufacture anything shown hereon without permission from THE TECHNICAL MATERIEL CORPORATION to the user. This drawing is loaned for mutual assistance and is subject to recall at any time.

Property of:

THE TECHNICAL MATERIEL CORPORATION
MAMARONECK, NEW YORK

HOLES	REQ.
A ~ 17/64 Dia.	1
B ~ 5/16 "	12
C ~ 9/16 "	2
D ~ .203 DIA	2



SYM	DESCRIPTION	DATE	CH. NO.	DRAFTS	CHECKER	ENG. APP.
A	① D HOLE DELETED, 2(D) HOLES REDIMENSIONED DIM 6-3/8, 11-5/8 DELETED	12-11-61	6028	RT	<i>[Signature]</i>	<i>[Signature]</i>

UNLESS OTHERWISE SPECIFIED:
DIMENSIONS ARE IN INCHES
TOLERANCES ON
FRACTIONS ± 1/64 DECIMALS ± .005 ANGLES ± 1/2°

SCALE: HALF
MAXIMUM ALLOWABLE TOLERANCES HAVE BEEN DETERMINED AND ANY DEVIATIONS WILL BE CAUSE FOR REJECTION.
REMOVE ALL BURRS AND SHARP EDGES

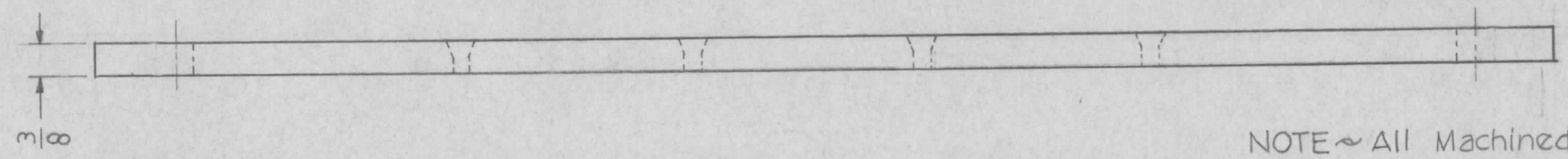
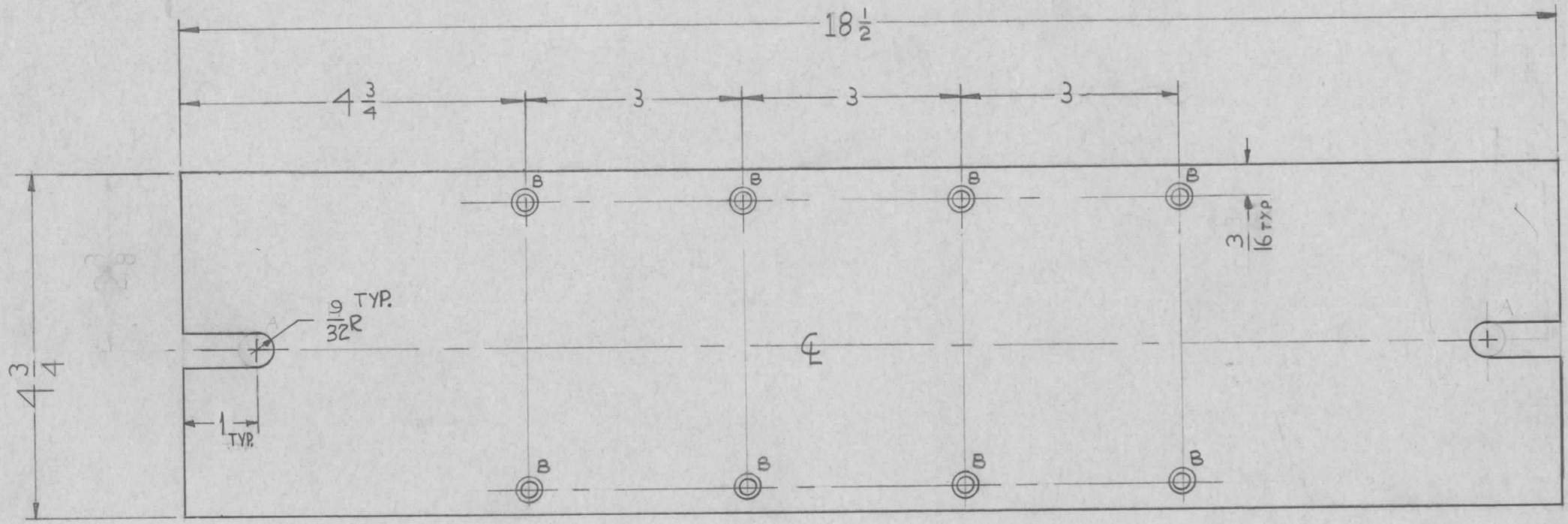
REQ. PER UNIT	MODEL	SECTION	ASS'Y. NO.	DATE
1	TRC-20K			10-25-61

USED ON

REQ.	ITEM	PART NO.	DESCRIPTION	SYMBOL
	1/4		THE TECHNICAL MATERIEL CORP. MAMARONECK, NEW YORK	
			SILICON GLASS	PLATE, REINFORCEMENT
			G.7	<i>[Signature]</i> RUZZO
			TYPE & TEMPER	DRAWN
			HEAT TREAT. SPEC.	CHECKER
				FINAL APPROVAL
				PX-632 A

PX-627 B

HOLE REQ'D
 A ~~17/32~~ 17/32
 B- DR. & CSK FOR 8
 8-32 FHS



NOTE ~ All Machined Surfaces To be coated Twice with Q85.

SYM	DESCRIPTION	DATE	CH. NO.	DRAFTS	CHECKER	ENG. APP.
B	9/32 R. TYP. WAS 17/32	2-16-62	5378	G.S.	<i>[Signature]</i>	<i>[Signature]</i>
A	(A) Was 17/32 Dia. Holes	12-11-61	6024	E.E.	<i>[Signature]</i>	<i>[Signature]</i>

UNLESS OTHERWISE SPECIFIED:
 DIMENSIONS ARE IN INCHES
 TOLERANCES ON FRACTIONS ± 1/64 DECIMALS ± .005 ANGLES ± 1/2°
 SCALE:
 MAXIMUM ALLOWABLE TOLERANCES HAVE BEEN DETERMINED AND ANY DEVIATIONS WILL BE CAUSE FOR REJECTION.
 REMOVE ALL BURRS AND SHARP EDGES

REQ. PER UNIT	MODEL	SECTION	ASS'Y. NO.	DATE
2	TRC 20K			10-2-61

REQ. ITEM	PART NO.	DESCRIPTION		SYMBOL
	003	THE TECHNICAL MATERIEL CORP. MAMARONECK, NEW YORK		
STOCK SIZE		PRESSURE PLATES (PART 1)		
MATERIAL		SILICON GLASS		
G7		E.E.	<i>[Signature]</i>	<i>[Signature]</i>
TYPE & TEMPER	HEAT TREAT. SPEC.	DRAWN	CHECKER	FINAL APPROVAL
SEE Note		<i>[Signature]</i>	ZB	PX-627 B
FINISH & SPEC. NO.		ELEC. DES. APP.	MECH. DES. APP.	

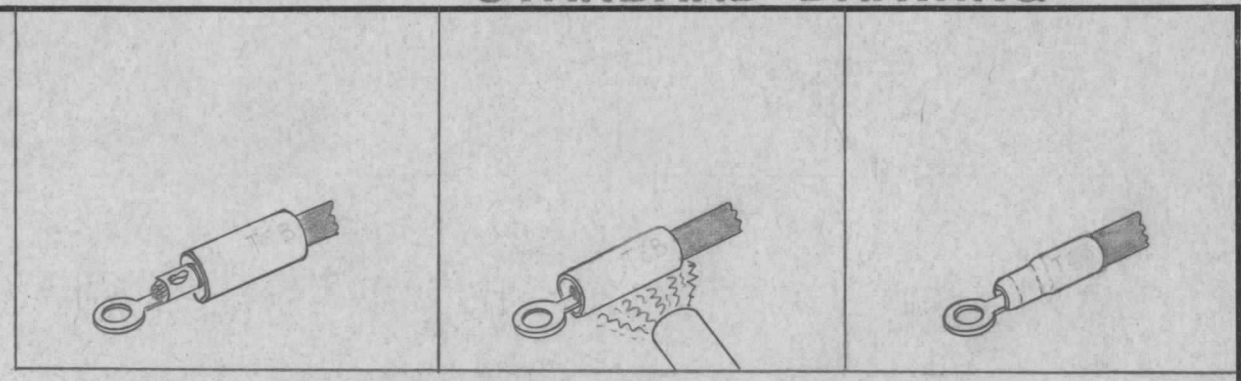
B

THE CONTENTS OF THIS DRAWING ARE THE EXCLUSIVE PROPERTY OF THE TECHNICAL MATERIEL CORP. ITS UNAUTHORIZED USE OR REPRODUCTION IN WHOLE OR IN PART IS STRICTLY FORBIDDEN.

TMC Part No.	Cat. No.	Wire Sizes	Color	Length	Shrink ID	Orig. ID	Wall Shrink	REPLACED BY
PX-643-1	N375-1	7,8,9	Brown	1	.187	.375	.030	PX 830-6-1
PX-643-2	N500-1	5,6	Black	1 23/32	.250	.500	.030	PX 830-2-1
PX-643-3	N625-1	3,4	Yellow	2 1/4	.312	.625	.040	PX 830-2-1
PX-643-4	N187-1	20,22	Green	1/2	.093	.187	.025	PX 830-12-1

PX-643

SUPERSEDED
DIRECTLY-REPLACED
BY PX830 (SEE ABOVE CHART)



1. Slip insulator over object to be insulated.
2. Apply heat of 500°-750°F. for a few seconds.
3. Finished . . . Permanent Insulation Protection.

SPECIFICATIONS

	IRRADIATED POLYOLEFIN
Tensile Strength	3000 PSI
Elongation	350%
Brittleness Temperature	-100°F
Specific Gravity	1.20
Water Absorption (% by wt. in 24 hrs.)	0.02%
Dielectric Strength	1000 Volts/Mil
Fungus Resistance	Inert
Volume Resistivity	10 ¹⁶ OHM-CM
Shrink Temperature	275°F
Dielectric Constant	2.5
Flammability	Self Extinguishing
Corrosion Resistance	Inert

Irradiated Polyolefin Heat Life ° F.

1 hour	572
4 hours	482
24 hours	392
168 hours	347
1,000 hours	302
Continuous	275

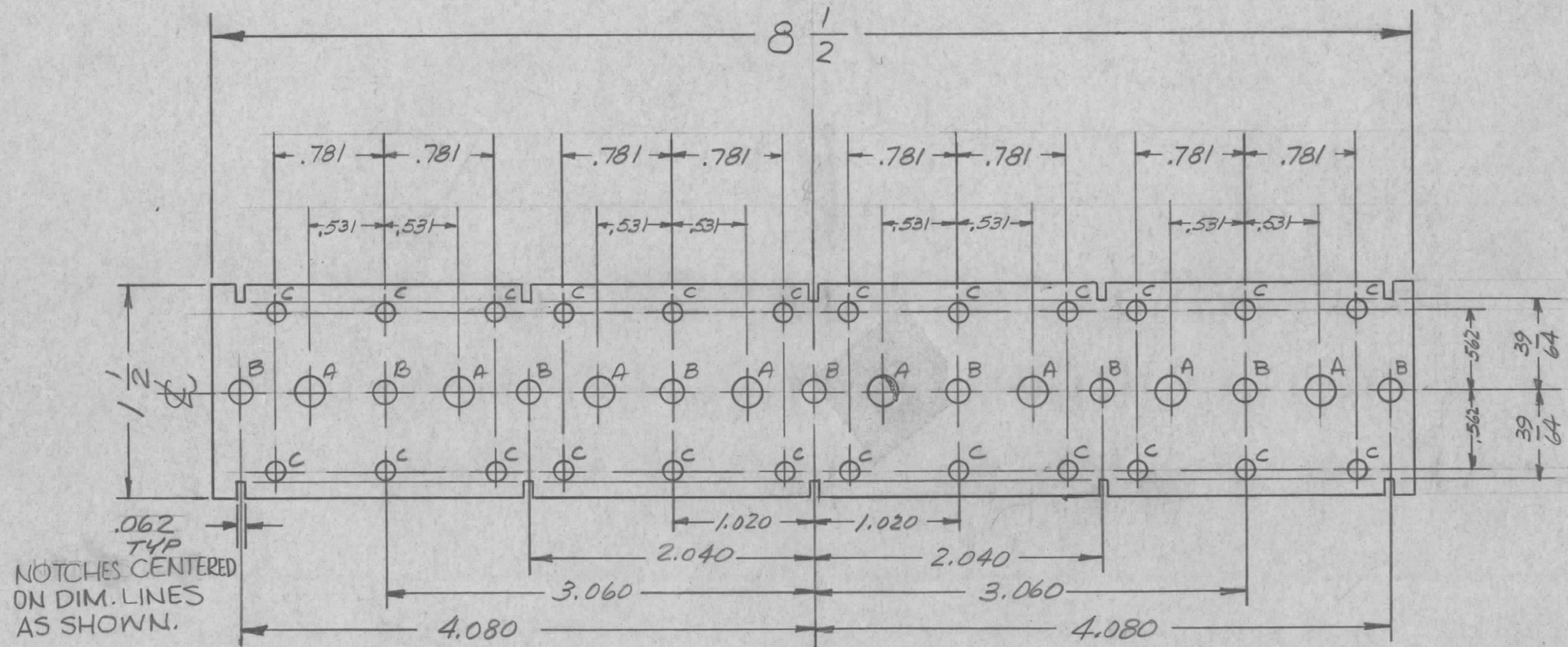
B	REPLACED BY COL. ADDED, SUPERSEDED DIRECTLY-REPLACED BY PX830 ADDED	6-21-65	14294	D.V.V.	<i>[Signature]</i>			
A	PX-643-4 ADDED	6-6-63	8943	<i>[Signature]</i>	<i>[Signature]</i>			
SYM	DESCRIPTION	DATE	CH. NO.	DRAFTS	CHECKER	ENG. APP.		
UNLESS OTHERWISE SPECIFIED: DIMENSIONS ARE IN INCHES TOLERANCES ON FRACTIONS ± 1/64 DECIMALS ± .005 ANGLES ± 1/2°		SCALE: S401-35 MAXIMUM ALLOWABLE TOLERANCES HAVE BEEN DETERMINED AND ANY DEVIATIONS WILL BE CAUSE FOR REJECTION. REMOVE ALL BURRS AND SHARP EDGES						
				REQ. PER UNIT	MODEL	SECTION	ASS'Y. NO.	DATE

REQ.	ITEM	PART NO.	DESCRIPTION	SYMBOL
THE TECHNICAL MATERIEL CORP. MAMARONECK, NEW YORK				
SLEEVING, SHRINK				
MATERIAL				
TYPE & TEMPER		HEAT TREAT. SPEC.	DRAWN	CHECKED
			<i>[Signature]</i>	<i>[Signature]</i>
			FINAL APPROVAL	
			PX-643	
			B	
FINISH & SPEC. NO.			ELEC. DES. APP.	MECH. DES. APP.

THE CONTENTS OF THIS DRAWING ARE THE EXCLUSIVE PROPERTY OF THE TECHNICAL MATERIEL CORP. ITS UNAUTHORIZED USE OR REPRODUCTION IN WHOLE OR IN PART IS STRICTLY FORBIDDEN.

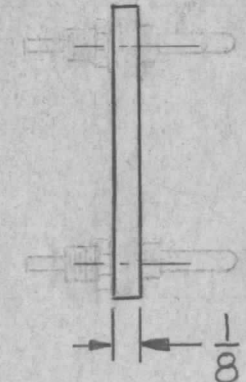
PX-649

HOLES ~
 A - .203 DIA. 8 REQ'D.
 B - .156 DIA. 9 REQ'D.
 C - .116 DIA. 24 REQ'D.



.062
TYP
NOTCHES CENTERED ON DIM. LINES AS SHOWN.

MOUNT IN ALL HOLES AS SHOWN



STAGE 1 MACHINING (A-2353-1)
 MAT L - 1/8 THK, REXOLITE, #2200, NATURAL

REF:
 LD-1121 THRU LD-1128

REQ.	ITEM	PART NO.	ANGER	DESCRIPTION	SYMBOL
		1/8 THK	THE TECHNICAL MATERIEL CORP. MAMARONECK, NEW YORK		
		STOCK SIZE	BOARD, MOUNTING, COMPONENTS		
		REXOLITE	RF		
		MATERIAL			
		#2200	AB	RUZZO	BP
		NATURAL	J. ANGER	PX-649	
		FINISH & SPEC. NO.	ELEC. DES. APP.	MECH. DES. APP.	

SYM	DESCRIPTION	DATE	CH. NO.	DRAFTS	CHECKER	ENG. APP.
UNLESS OTHERWISE SPECIFIED:		SCALE:				
DIMENSIONS ARE IN INCHES		MAXIMUM ALLOWABLE TOLERANCES HAVE BEEN DETERMINED AND ANY DEVIATIONS WILL BE CAUSE FOR REJECTION. REMOVE ALL BURRS AND SHARP EDGES				
TOLERANCES ON		B HFR-1				
FRACTIONS ± 1/64		REQ. PER UNIT				
DECIMALS ± .005		MODEL				
ANGLES ± 1/2°		SECTION				
		ASS'Y. NO.				
		DATE				
		USED ON				

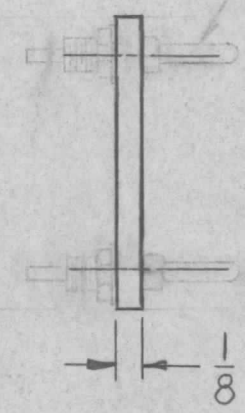
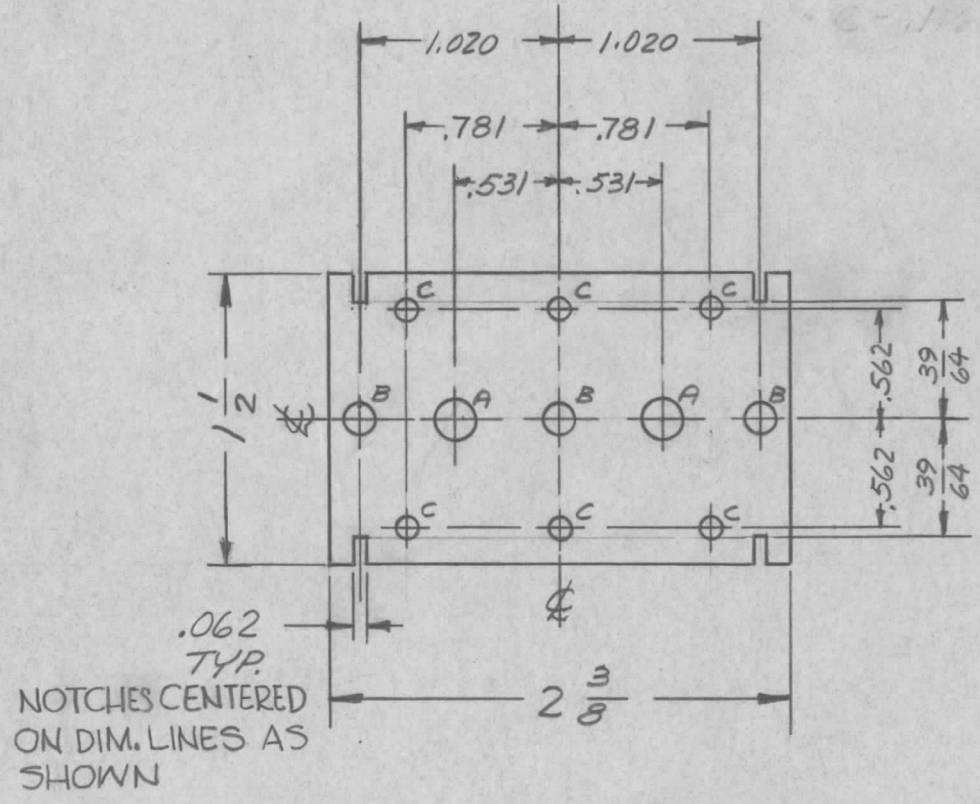
THE CONTENTS OF THIS DRAWING ARE THE EXCLUSIVE PROPERTY OF THE TECHNICAL MATERIEL CORP. ITS UNAUTHORIZED USE OR REPRODUCTION IN WHOLE OR IN PART IS STRICTLY FORBIDDEN.

PX-650

HOLES
 A-.203 DIA. 2 REQ.
 B-.156 DIA. 3 REQ.
 C-.116 DIA. 6 REQ.

HOLES
 A-.203 DIA. 2 REQ.
 B-.156 DIA. 3 REQ.
 C-.116 DIA. 6 REQ.

MOUNTING
 ALL C'S
 AS SHOWN.



REF; LD- 1113 (FOR AX-369)
 LD- 1114 (FOR AX-370)
 LD- 1115 (FOR AX-371)
 LD- 1116 (FOR AX-372)
 LD- 1117 (FOR AX-373)
 LD- 1118 (FOR AX-374)
 LD- 1119 (FOR AX-375)
 LD- 1120 (FOR AX-376)

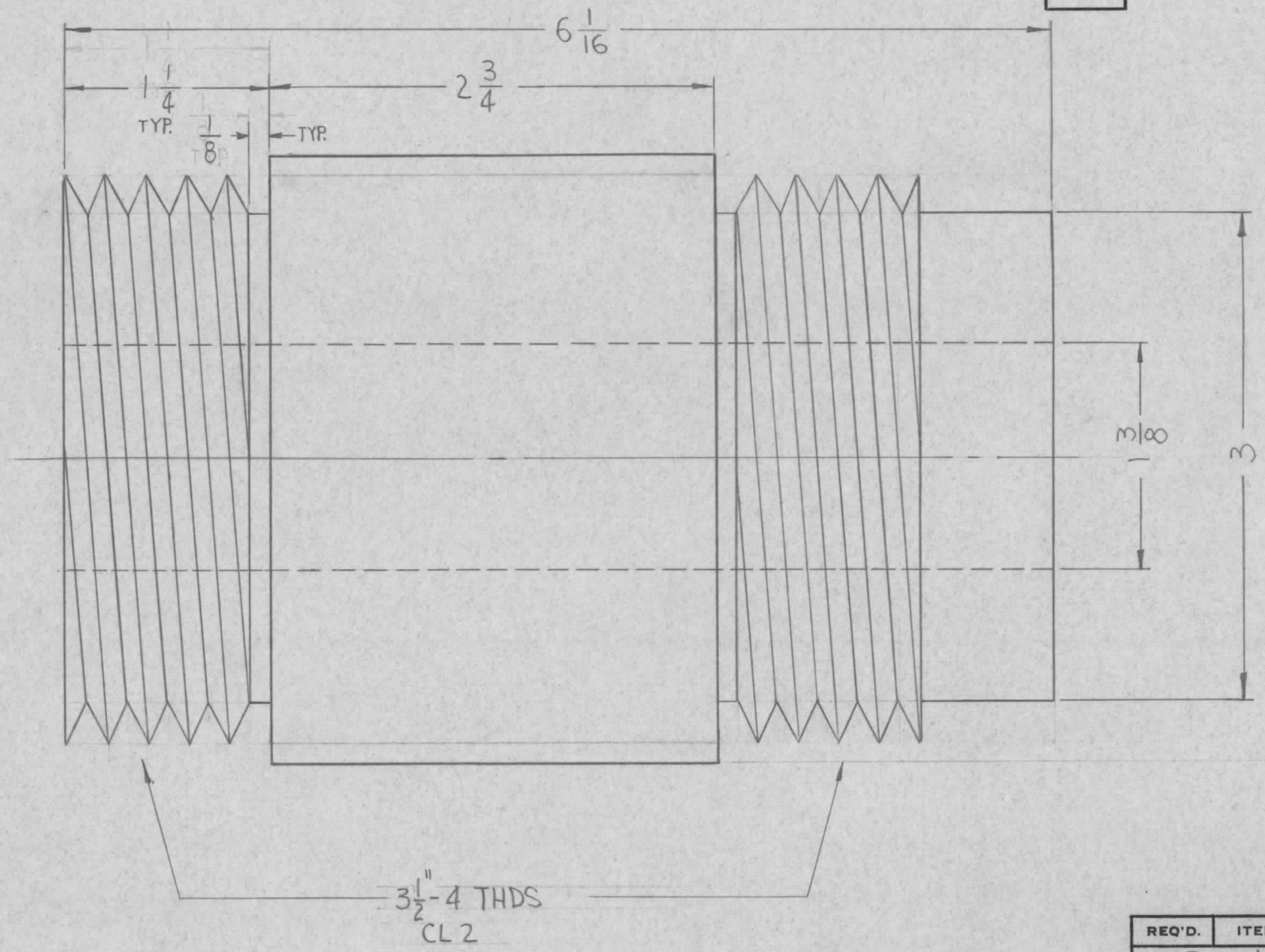
SYM	DESCRIPTION	DATE	CH. NO.	DRAFTS	CHECKER	ENG. APP.
UNLESS OTHERWISE SPECIFIED:						
DIMENSIONS ARE IN INCHES		SCALE:				
TOLERANCES ON		MAXIMUM ALLOWABLE TOLERANCES HAVE BEEN DETERMINED AND ANY DEVIATIONS WILL BE CAUSE FOR REJECTION. REMOVE ALL BURRS AND SHARP EDGES				
FRACTIONS ± 1/64		DECIMALS ± .005				
ANGLES ± 1/2°						

REQ. PER UNIT	MODEL	SECTION	ASS'Y. NO.	DATE
8	HFR-1			1-25-62
USED ON				

REQ.	ITEM	PART NO.	DESCRIPTION	SYMBOL
			ANGER	
1/8 THK STOCK SIZE			THE TECHNICAL MATERIEL CORP. MAMARONECK, NEW YORK	
REXOLITE MATERIAL			BOARD, MOUNTING, COMPONENTS, OSC.	
#2200			AB	RUZZO
TYPE & TEMPER		HEAT TREAT. SPEC.	DRAWN	CHECKED
NATURAL			J. ANGER	BP
FINISH & SPEC. NO.		ELEC. DES. APP.	MECH. DES. APP.	PX-650

PX-666

REVISIONS						
SYM	DESCRIPTION	DATE	E.M.N. NO.	DRAFT	CHKD	APPD
Ø	ORIGINAL RELEASE FOR PROD	2/3/66				<i>file</i>



REQ'D.	ITEM	PART NUMBER	DESCRIPTION	SYMBOL
	R. LANGER		LIST OF MATERIAL	
MATERIAL		TEFLON	THE TECHNICAL MATERIEL CORP. MAMARONECK, NEW YORK	
FINISH		NATURAL	TITLE SPACER, INSULATOR	
UNLESS OTHERWISE SPECIFIED DIMENSIONS ARE IN INCHES AND INCLUDE CHEMICALLY APPLIED OR PLATED FINISHES		DRAWN <i>Gianfilippo</i>	DATE 6-7-62	FINAL APPROVAL <i>M. Hay</i>
		CHECKED <i>J. De</i>	DATE 2-4-66	DATE 2/4/66
		ELECT. DES.	DATE	PX-666
		MECH. DES.	DATE	Ø
		SHEET		REV. LTR.

1	DCC-1	A-2518
Q'TY./UNIT	MODEL USED ON	ASS'Y. NO.
SCALE	CODE	
THE CONTENTS OF THIS DRAWING ARE THE EXCLUSIVE PROPERTY OF THE TECHNICAL MATERIEL CORP. ITS UNAUTHORIZED USE OR REPRODUCTION IN WHOLE OR IN PART IS STRICTLY FORBIDDEN.		

NOTES

HOLES

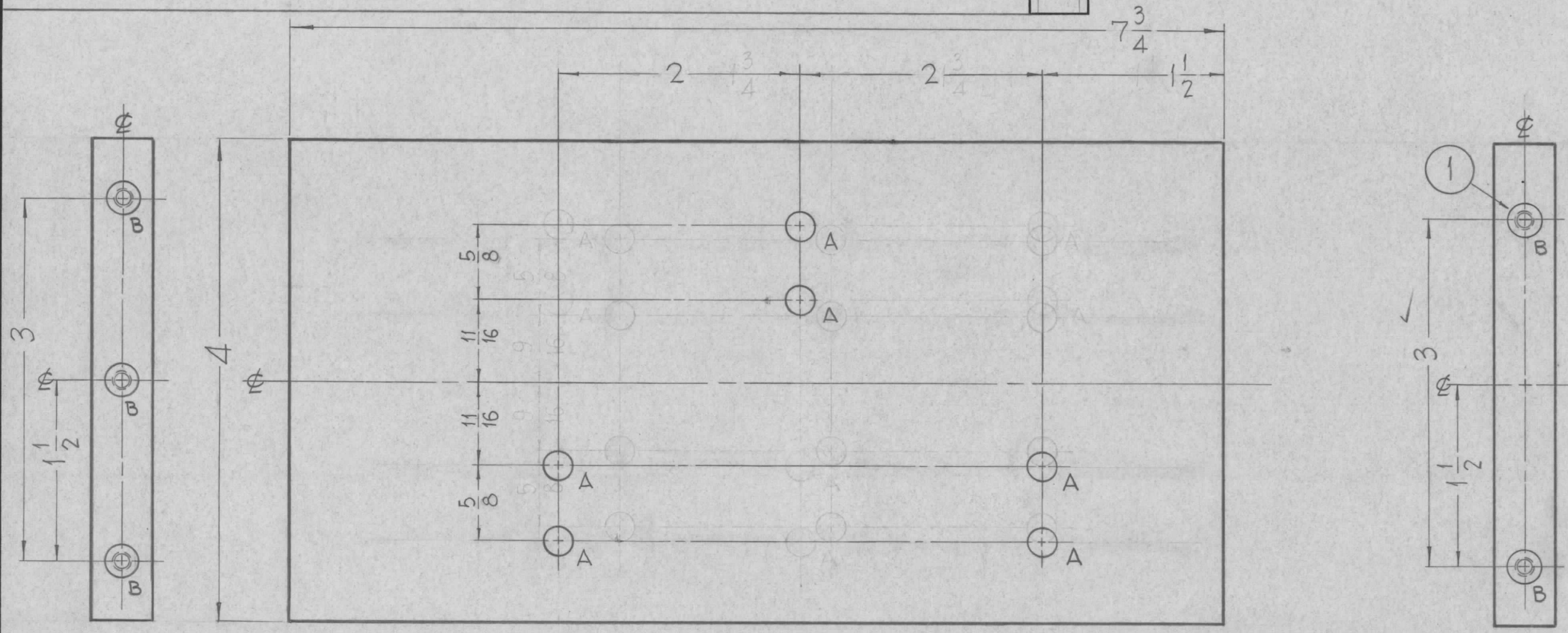
A - 7/32 DIA. 6 REQ.

B - SEE NOTE 5 REQ. COIL 5 REQ.

PX-673

REVISIONS

SYM	DESCRIPTION	DATE	E.M.N. NO.	DRAFT	CHKD	APPD
0	ORIGINAL RELEASE FOR PRODUCTION	3-2-64		A.M.		



NOTE: B-1~DRILL 13/64(.200) TO .552 MIN. DEPTH
 2~120° COUNTERSINK .22-.25 DIA.
 3~TAP 410 MIN. DEPTH. USE HELI-COIL TAP # 3FPB.
 4~INSTALL ITEM ① 3/4 TO 1-1/2 PITCH BELOW SURFACE.
 5~BREAK OFF DRIVING TANG.

NOTES

1	GPT-200K	AX-398
Q'TY./UNIT	MODEL USED ON	ASS'Y. NO.
SCALE 1:1	CODE A	

THE CONTENTS OF THIS DRAWING ARE THE EXCLUSIVE PROPERTY OF THE TECHNICAL MATERIEL CORP. ITS UNAUTHORIZED USE OR REPRODUCTION IN WHOLE OR IN PART IS STRICTLY FORBIDDEN.

5	1	NT-139-SF1-20	INSERT, SCREW THREADED	B
REQ'D.	ITEM	PART NUMBER	DESCRIPTION	SYMBOL

F. BUDETTI

LIST OF MATERIAL

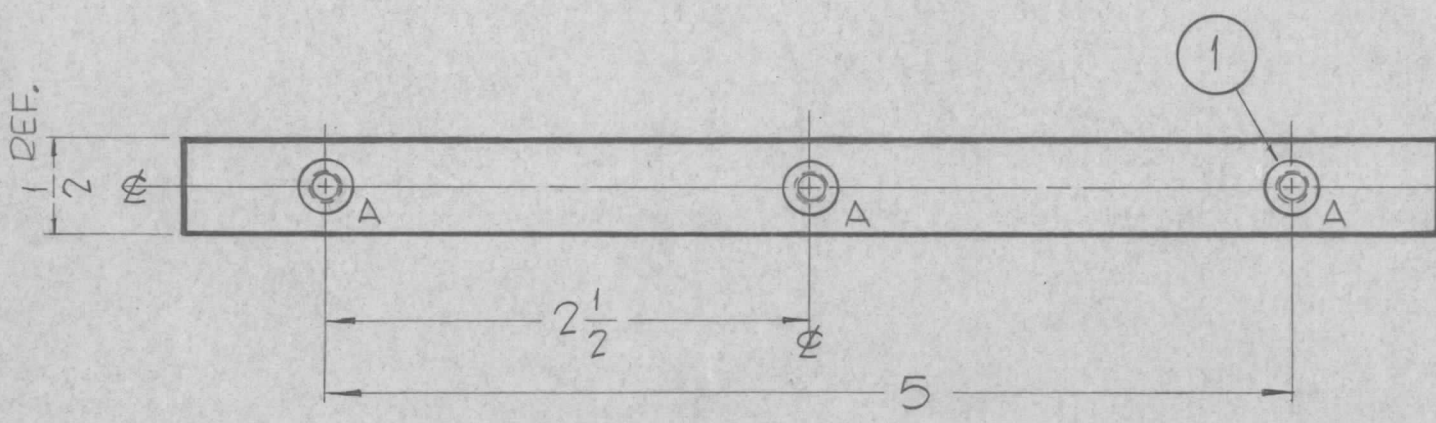
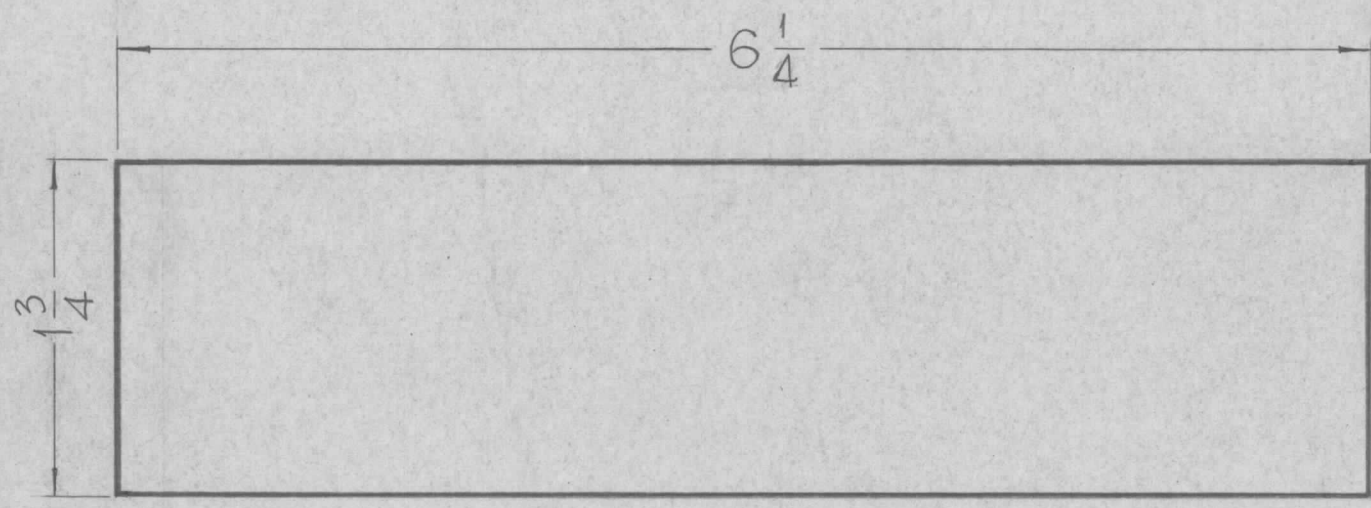
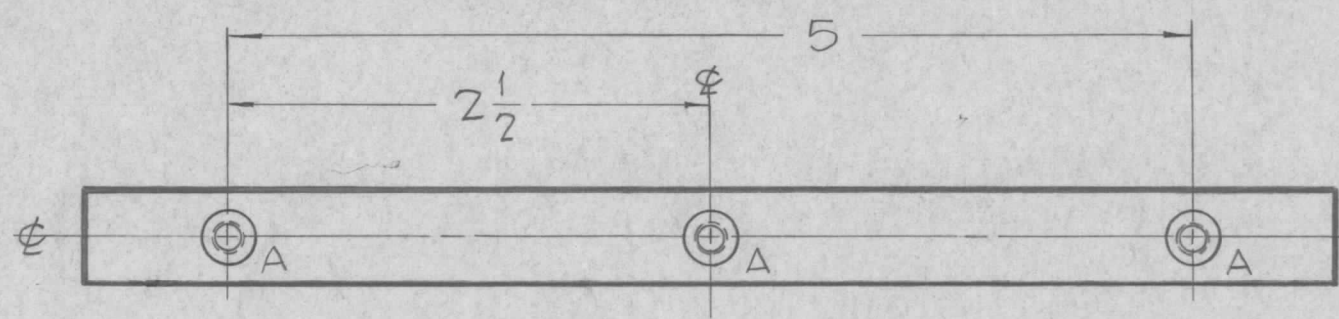
MATERIAL 1/2 THICK, EPOXY, G-11
 FINISH NATURAL
 TITLE BOARD, RESISTOR MOUNTING SMALL
 THE TECHNICAL MATERIEL CORP.
 MAMARONECK, NEW YORK

UNLESS OTHERWISE SPECIFIED DIMENSIONS ARE IN INCHES AND INCLUDE CHEMICALLY APPLIED OR PLATED FINISHES		DRAWN John C. Biele		DATE 6/28/62	FINAL APPROVAL RJC		DATE
DECIMALS .X ± .05 .XX ± .01 .XXX ± .005		FRACTIONS ± 1/64 ANGLES ± 0° 30'		CHECKED ACB	DATE 2/10/64	PX-673	
TOLERANCES		ELECT. DES. BFB		DATE 2/10/64	SHEET		REV. LTR. 0
		MECH. DES. [Signature]		DATE 2/10/64			

PX-674 0

REVISIONS

SYM	DESCRIPTION	DATE	E.M.N. NO.	DRAFT	CHKD	APPD
0	ORIGINAL RELEASE FOR PRODUCTION	3-264		A.M.		



HOLE A-1~DRILL 13/64(.200) TO .552 MIN. DEPTH.
 (6 REQ) 2~120° COUNTERSINK .22-.25 DIA.
 A~DRILL 3~TAP .410 MIN. DEPTH. USE HELI-COIL TAP #3FPB 5 REQ
 4~INSTALL ITEM ① 3/4 TO 1-1/2 PITCH BELOW SURFACE
 5~BREAK OFF DRIVING TANG.

REQ'D.	ITEM	PART NUMBER	DESCRIPTION	SYMBOL
6	1	NT-139-SF1-20	INSERT, SCREW THREADED	A

F. BUDETTI LIST OF MATERIAL

MATERIAL	1/2 THICK, EPOXY, G-11	THE TECHNICAL MATERIEL CORP. MAMARONECK, NEW YORK
FINISH	NATURAL	TITLE BOARD, SPACER

1	GPT-200K	AX-398
Q'TY./UNIT	MODEL USED ON	ASS'Y. NO.
SCALE 1:1	CODE A	

NOTES

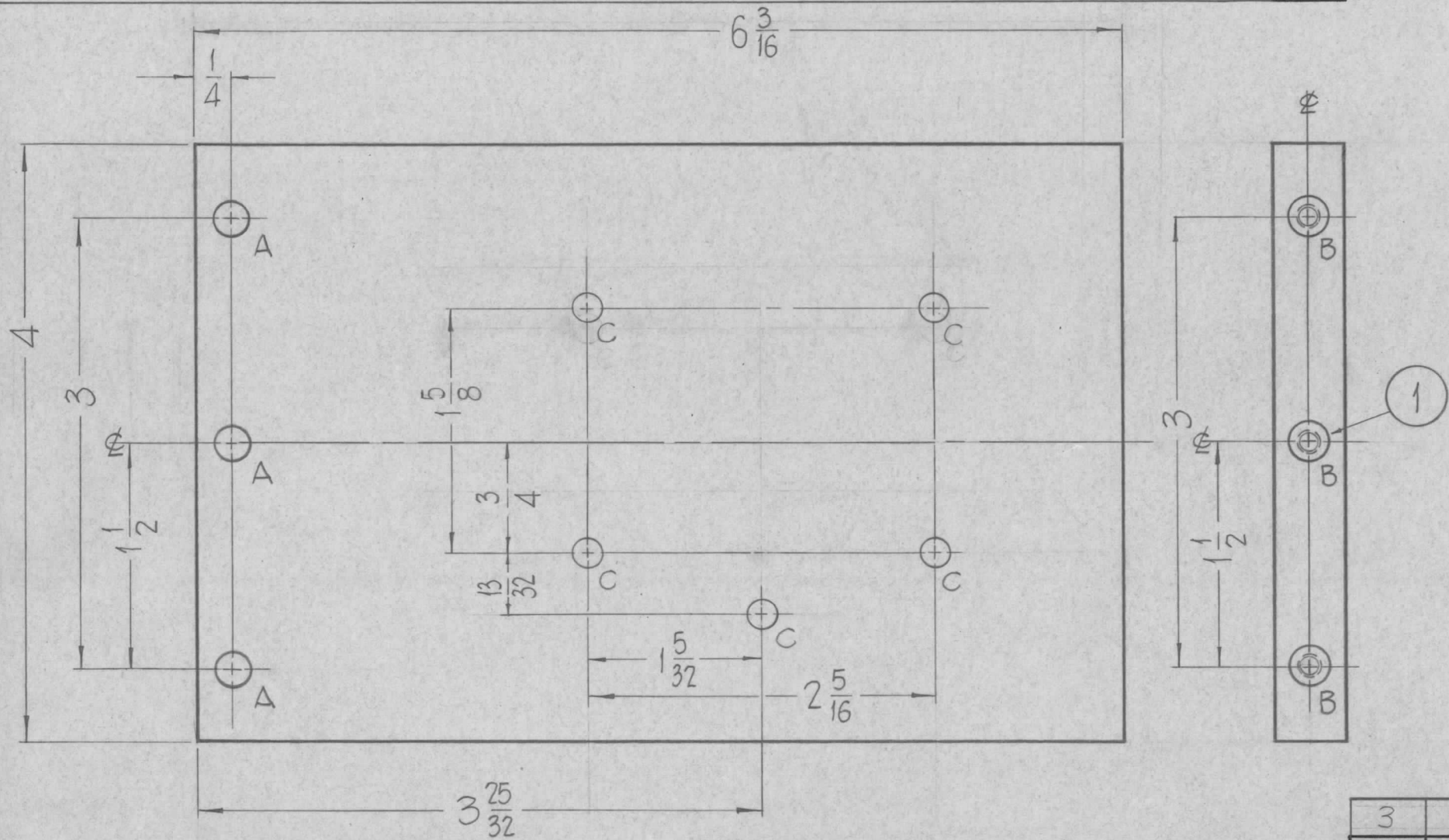
THE CONTENTS OF THIS DRAWING ARE THE EXCLUSIVE PROPERTY OF THE TECHNICAL MATERIEL CORP. ITS UNAUTHORIZED USE OR REPRODUCTION IN WHOLE OR IN PART IS STRICTLY FORBIDDEN.

UNLESS OTHERWISE SPECIFIED DIMENSIONS ARE IN INCHES AND INCLUDE CHEMICALLY APPLIED OR PLATED FINISHES	DRAWN	DATE	FINAL APPROVAL	DATE
	John C. Biele	7/25/62	KJC	
	CHECKED	DATE		
	JCB	2/10/64		
DECIMALS	TOLERANCES	FRACTIONS		
.X ± .05		± 1/64		
.XX ± .01		ANGLES		
.XXX ± .005		± 0° 30'		
ELECT. DES.	DATE		PX-674	0
JCB	2/10/64			
MECH. DES.	DATE			
JCB	2/10/64			
	SHEET			REV. LTR.

HOLES —
 A- 7/32 DIA. ————— 3 REQ.
 B- SEE NOTE ————— 3 REQ.
 C- 11/64 DIA. ————— 5 REQ.

PX-675 0

REVISIONS						
SYM	DESCRIPTION	DATE	E.M.N. NO.	DRAFT	CHKD	APPD
0	ORIGINAL RELEASE FOR PRODUCTION	3-2-64		A.M.		



NOTE: B-1~ DRILL 13/64 (.200) TO .552 MIN. DEPTH
 B-2~ 120° COUNTERSINK .22-.25 DIA.
 3~ TAP .410 MIN. DEPTH. USE HELI-COIL TAP
 TAP # 3FPB
 4~ INSTALL ITEM ① 3/4 TO 1-1/2 PITCH BELOW SURFACE
 5~ BREAK-OFF DRIVING TANG.

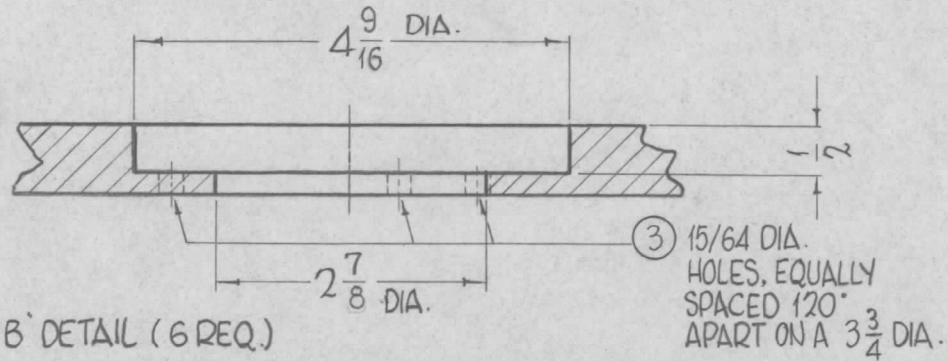
NOTES

1	GPT-200K	AX-398
Q'TY./UNIT	MODEL USED ON	ASS'Y. NO.
SCALE 1:1	CODE A	
THE CONTENTS OF THIS DRAWING ARE THE EXCLUSIVE PROPERTY OF THE TECHNICAL MATERIEL CORP. ITS UNAUTHORIZED USE OR REPRODUCTION IN WHOLE OR IN PART IS STRICTLY FORBIDDEN.		

3	1	NT-139-SF1-20	INSERT, SCREW THREADED	B
REQ'D.	ITEM	PART NUMBER	DESCRIPTION	SYMBOL

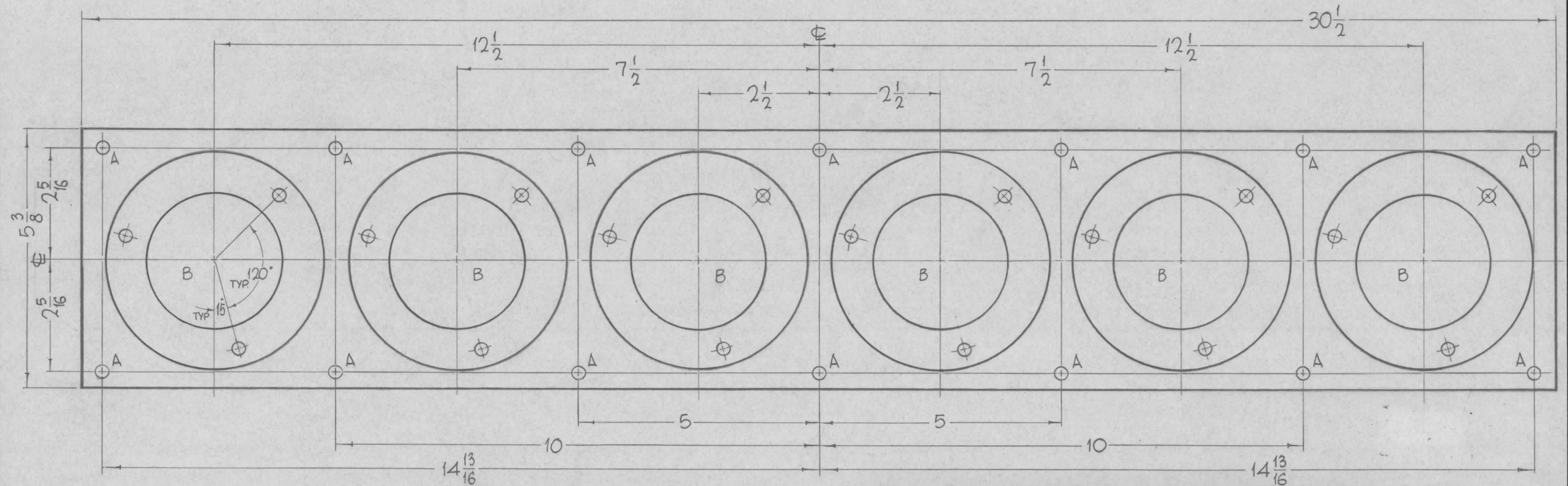
F. BUDETTI		LIST OF MATERIAL			
MATERIAL		1/2 THICK, EPOXY, G-11			
FINISH		NATURAL			
TITLE		BOARD, TRANSFORMER MOUNTING			
DRAWN		DATE	FINAL APPROVAL		DATE
John C. Biele		7/2/62	KAC		
CHECKED		DATE			
JCB		2/10/64			
ELECT. DES.		DATE	PX-675		0
B.B. TB		2/10/64			
MECH. DES.		DATE	SHEET		REV. LTR.
ape		2/10/64			

HOLES REQ.
A-15/64 DIA. 14



PX-685

REVISIONS						
SYM	DESCRIPTION	DATE	E.M.N. NO.	DRAFT	CHKD	APPD
0	ORIGINAL RELEASE FOR PRODUCTION	3-26-64		A.M.		



REF-TMC DWG. LD-1170

1	GPT-200K	AP-110
Q'TY./UNIT	MODEL USED ON	ASS'Y. NO.
SCALE 1/2" = 1	CODE A	

THE CONTENTS OF THIS DRAWING ARE THE EXCLUSIVE PROPERTY OF THE TECHNICAL MATERIEL CORP. ITS UNAUTHORIZED USE OR REPRODUCTION IN WHOLE OR IN PART IS STRICTLY FORBIDDEN.

REQ'D.	ITEM	PART NUMBER	DESCRIPTION	SYMBOL
F. BUDETTI LIST OF MATERIAL				
MATERIAL			THE TECHNICAL MATERIEL CORP. MAMARONECK, NEW YORK	
FINISH			TITLE	
NATURAL			BOARD, TUBE MOUNTING	
UNLESS OTHERWISE SPECIFIED DIMENSIONS ARE IN INCHES AND INCLUDE CHEMICALLY APPLIED OR PLATED FINISHES			DRAWN John C Biele	DATE 7-19-63
DECIMALS .X ± .05 .XX ± .01 .XXX ± .005			CHECKED JCB	DATE 1/7/64
FRACTIONS ± 1/64 ANGLES ± 0° 30'			ELECT. DES. JCB	DATE 2/7/64
TOLERANCES			MECH. DES. JCB	DATE
			FINAL APPROVAL RJC	DATE
			PX-685	0
			SHEET	REV. LTR.

NOTES

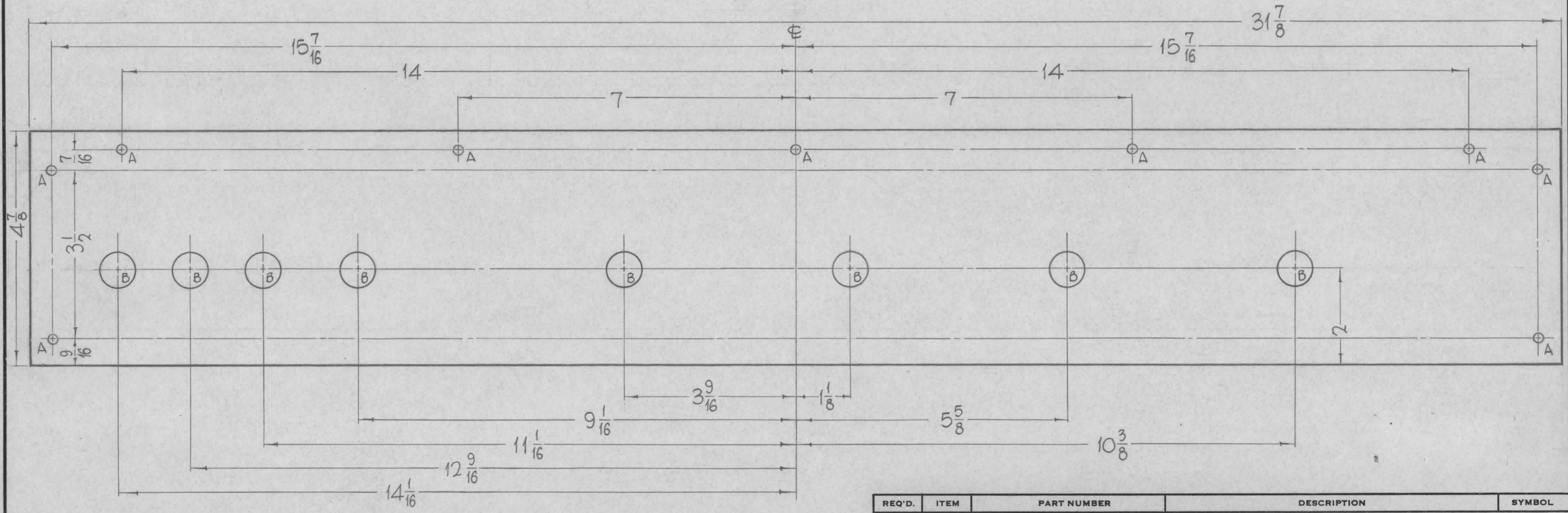
HOLES
 A - 15/64 DIA.
 B - 3/4 DIA.

REQ
 9
 8

PX-686

REVISIONS

SYM	DESCRIPTION	DATE	E.M.N. NO.	DRAFT	CHKD	APPD
Ø	ORIGINAL RELEASE FOR PRODUCTION	3-2-64		A.M.		



NOTES

REF. TMC DWG. LD-1171

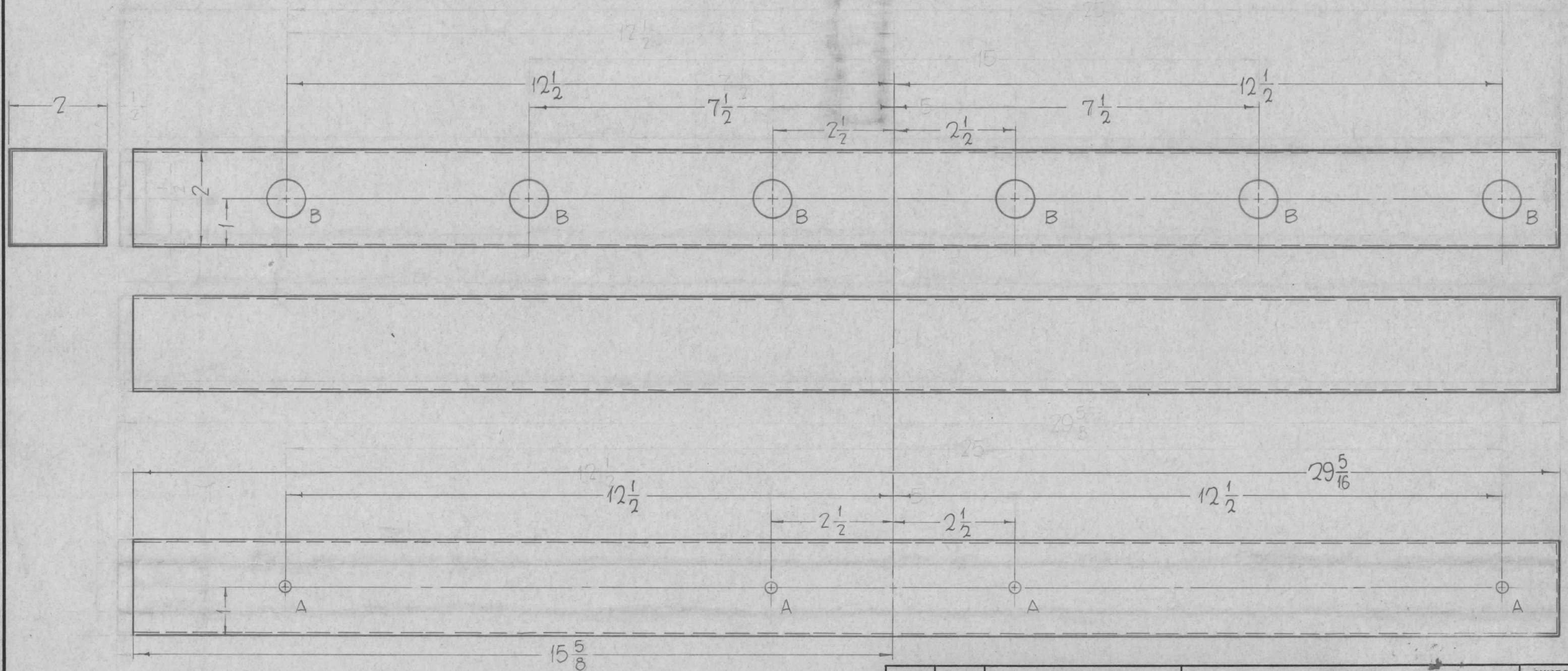
1	GPT-200K	AP-110
Q'TY./UNIT	MODEL USED ON	ASS'Y. NO.
SCALE	CODE A	

THE CONTENTS OF THIS DRAWING ARE THE EXCLUSIVE PROPERTY OF THE TECHNICAL MATERIEL CORP. ITS UNAUTHORIZED USE OR REPRODUCTION IN WHOLE OR IN PART IS STRICTLY FORBIDDEN.

REQ'D.	ITEM	PART NUMBER	DESCRIPTION	SYMBOL
F. BUDETTI LIST OF MATERIAL				
MATERIAL			THE TECHNICAL MATERIEL CORP. MAMARONECK, NEW YORK	
FINISH			TITLE	
NATURAL			BOARD, MTG., H.V. CONTACTS	
UNLESS OTHERWISE SPECIFIED DIMENSIONS ARE IN INCHES AND INCLUDE CHEMICALLY APPLIED OR PLATED FINISHES			DRAWN John C Biele DATE 7-23-63 CHECKED [Signature] DATE 12-2-63 ELECT. DES. [Signature] DATE 11/23/64 MECH. DES. [Signature] DATE 2/7/64	FINAL APPROVAL [Signature] PX-686 SHEET
DECIMALS .X ± .05 .XX ± .01 .XXX ± .005 TOLERANCES FRACTIONS ± 1/64 ANGLES ± 0° 30'			DATE 2/7/64 REV. LTR.	Ø

HOLES — A - 15/64 DIA. — 4 REQ
 B - 3/4 DIA. — 6 REQ

REVISIONS						
SYM	DESCRIPTION	DATE	E.M.N. NO.	DRAFT	CHKD	APPD
0	ORIGINAL RELEASE FOR PRODUCTION	3-2-64		A.M.		



PROCESSING —
 BAKE IN VACUUM, 300°F - 90 MIN.

FINISHING —
 PAINT TMC GRAY, BAKE 225°F - 20 MIN.

NOTES

THE CONTENTS OF THIS DRAWING ARE THE EXCLUSIVE PROPERTY OF THE TECHNICAL MATERIEL CORP. ITS UNAUTHORIZED USE OR REPRODUCTION IN WHOLE OR IN PART IS STRICTLY FORBIDDEN.

REQ'D.	ITEM	PART NUMBER	DESCRIPTION	SYMBOL
F. BUDETTI LIST OF MATERIAL				
MATERIAL			THE TECHNICAL MATERIEL CORP.	
83-VP, 3-PLY STRANDEG, PREIMPREGNET (POLYESTER) FIBERGLASS			MAMARONECK, NEW YORK	
FINISH			TITLE	
SEE NOTES			DUCT, AIR	
UNLESS OTHERWISE SPECIFIED DIMENSIONS ARE IN INCHES AND INCLUDE CHEMICALLY APPLIED OR PLATED FINISHES			DRAWN	DATE
			John C. Biele	6/27/62
			CHECKED	DATE
			JCS	11/26/63
			ELECT. DES.	DATE
			CHB LB	6/7/64
			MECH. DES.	DATE
			ave	2/2/64
			FINAL APPROVAL	DATE
			Roc	
			PX-687	0
			SHEET	REV. LTR.

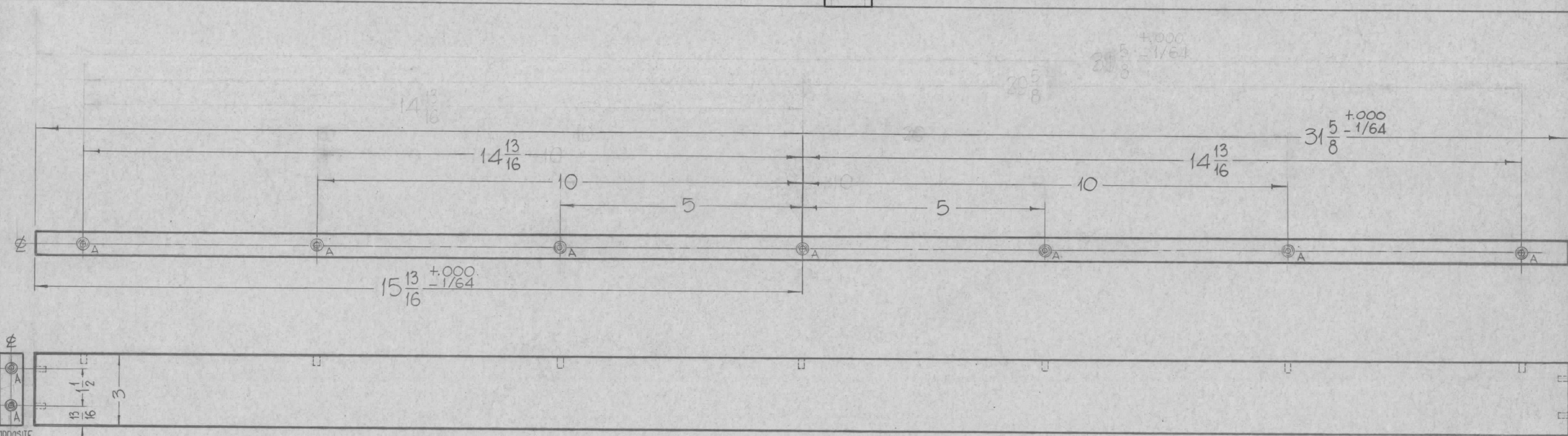
HOLES

A - SEE NOTE 18 REQ.

PX-688 0

REVISIONS

SYM	DESCRIPTION	DATE	E.M.N. NO.	DRAFT	CHKD	APPD
0	ORIGINAL RELEASE FOR PRODUCTION	3-26-64		AM.		



NOTE: A-1~DRILL 13/64 (.200) TO .552 MIN. DEPTH.
 2~120° COUNTERSINK .22-.25 DIA.
 3~TAP #410 MIN. DEPTH. USE HELI-COIL TAP #3FPB.
 4~INSTALL ITEM ① 3/4 TO 1-1/2 PITCH BELOW SURFACE
 5~BREAK OFF DRIVING TANG.

NOTES

TMC PART NO. A		DX: -1		DX: -2	
2	GPT-200K	AP-110			
Q'TY./UNIT	MODEL USED ON	ASS'Y. NO.			
SCALE	CODE				
	A				
THE CONTENTS OF THIS DRAWING ARE THE EXCLUSIVE PROPERTY OF THE TECHNICAL MATERIEL CORP. ITS UNAUTHORIZED USE OR REPRODUCTION IN WHOLE OR IN PART IS STRICTLY FORBIDDEN.					

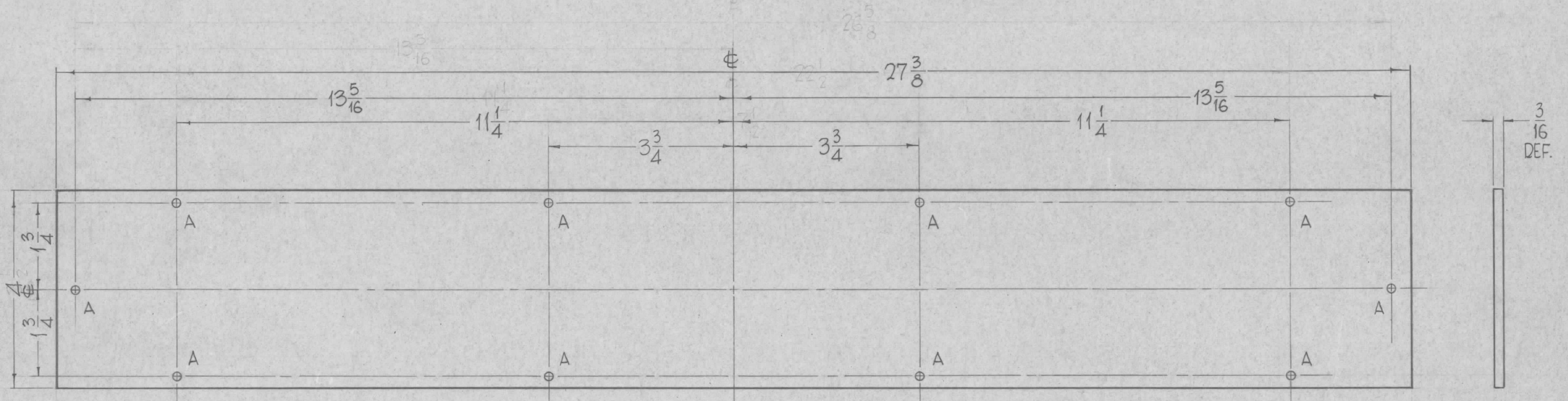
17	1	NT-139-SF1-20	INSERT, THREADED	
REQ'D.	ITEM	PART NUMBER	DESCRIPTION	SYMBOL
F. BUDETTI LIST OF MATERIAL				
MATERIAL		1/2 THICK, EPOXY, G-11 S-11		
FINISH		NATURAL		
TITLE		SUPPORT, BOARD TUBE MOUNTING		
DRAWN		DATE	FINAL APPROVAL	
John C. Biele		6/26/62	[Signature]	
CHECKED		DATE		
[Signature]		11/20/63		
ELECT. DES.		DATE	PX-688 0	
[Signature]		11/1/64		
MECH. DES.		DATE		
[Signature]		3/2/64		
UNLESS OTHERWISE SPECIFIED DIMENSIONS ARE IN INCHES AND INCLUDE CHEMICALLY APPLIED OR PLATED FINISHES			SHEET	
DECIMALS	TOLERANCES		REV. LTR.	
.X ± .05	± 1/64		0	
.XX ± .01	ANGLES ± 0° 30'			
.XXX ± .005				

HOLES — A - 11/64 DIA. — 10 REQ.

PX-689

REVISIONS

SYM	DESCRIPTION	DATE	E.M.N. NO.	DRAFT	CHKD	APPD
0	ORIGINAL RELEASE FOR PRODUCTION	3-26-64		A.M.		



REQ'D.	ITEM	PART NUMBER	DESCRIPTION	SYMBOL
F. BUDETTI LIST OF MATERIAL				
MATERIAL			THE TECHNICAL MATERIEL CORP. MAMARONECK, NEW YORK	
FINISH			TITLE	
			WINDOW, PLEXIGLASS	
UNLESS OTHERWISE SPECIFIED DIMENSIONS ARE IN INCHES AND INCLUDE CHEMICALLY APPLIED OR PLATED FINISHES			DRAWN	DATE
			John C Biele	6/16/62
			CHECKED	DATE
			[Signature]	11/20/63
			ELECT. DES.	DATE
			[Signature]	11/7/64
			MECH. DES.	DATE
			[Signature]	2/7/64
			FINAL APPROVAL	DATE
			[Signature]	
			PX-689	0
			SHEET	REV. LTR.

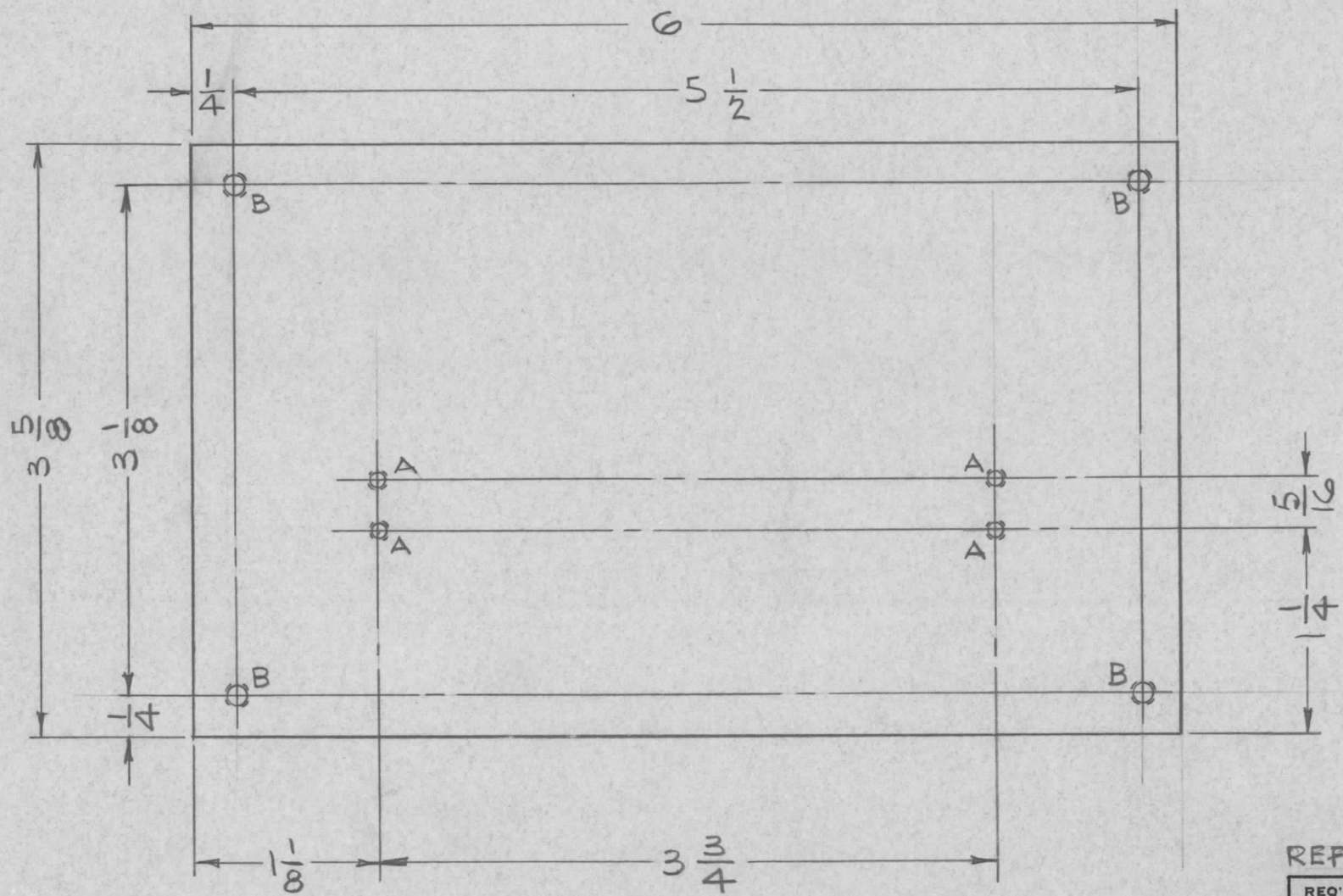
1	GPT 200K	AP-110
Q'TY./UNIT	MODEL USED ON	ASS'Y. NO.
SCALE	CODE	
	A	
THE CONTENTS OF THIS DRAWING ARE THE EXCLUSIVE PROPERTY OF THE TECHNICAL MATERIEL CORP. ITS UNAUTHORIZED USE OR REPRODUCTION IN WHOLE OR IN PART IS STRICTLY FORBIDDEN.		

NOTES

PX-691

REVISIONS

SYM	DESCRIPTION	DATE	E.M.N. NO.	DRAFT	CHKD	APPD
-----	-------------	------	------------	-------	------	------



LEGEND

HOLE	DESCRIPTION	REQ'D
A	#43(089) DR. 4-40 TAP	4
B	#36(106) DR. 6-32 TAP	4

REF: LD-1199

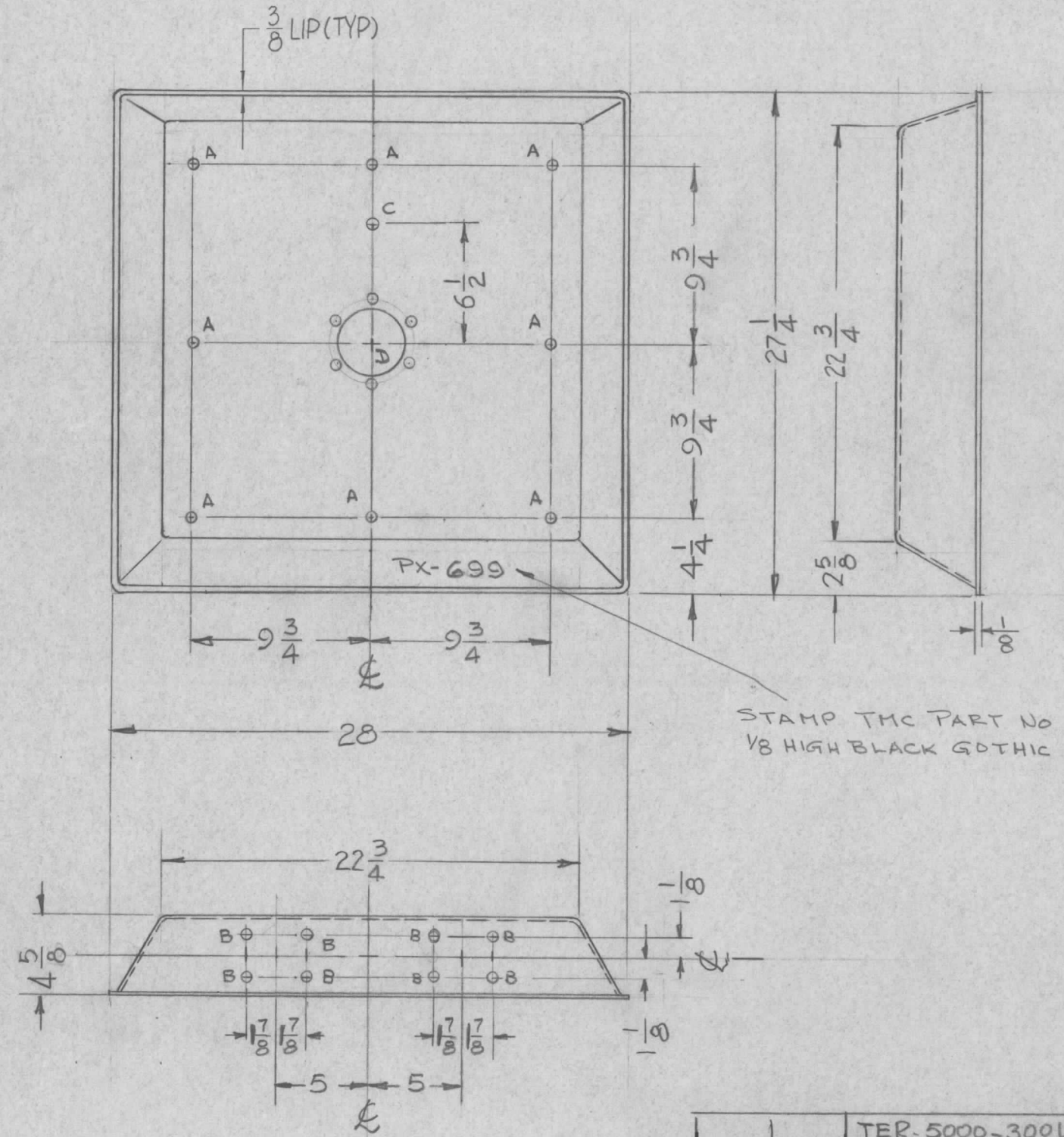
Q'TY./UNIT	MODEL USED ON	ASS'Y. NO.
1	RAK-16 B	A-3107
1	RAK-16 C	A-3106
SCALE	CODE	
FULL		

REQ'D.	ITEM	PART NUMBER	DESCRIPTION	SYMBOL
LIST OF MATERIAL				
MATERIAL		THE TECHNICAL MATERIEL CORP.		
1/4 THK. PHENOLIC NEMA GRADE XXX		MAMARONECK, NEW YORK		
FINISH		TITLE		
BLACK, SEMI-GLOSS		BLOCK, TERM. STRIP MOUNTING		
UNLESS OTHERWISE SPECIFIED DIMENSIONS ARE IN INCHES AND INCLUDE CHEMICALLY APPLIED OR PLATED FINISHES				
DECIMALS	TOLERANCES	FRACTIONS	DATE	DATE
.X ± .05		± 1/64	3/13/63	
.XX ± .01		ANGLES	3-14-63	
.XXX ± .005		± 0° 30'	3-14-63	
DRAWN		DATE		FINAL APPROVAL
T. RAMIREZ		3/13/63		BP
CHECKED		DATE		
HQ		3-14-63		
ELECT. DES.		DATE		
JMA		3-14-63		
MECH. DES.		DATE		
JSG		3-14-63		
SHEET				REV. LTR.

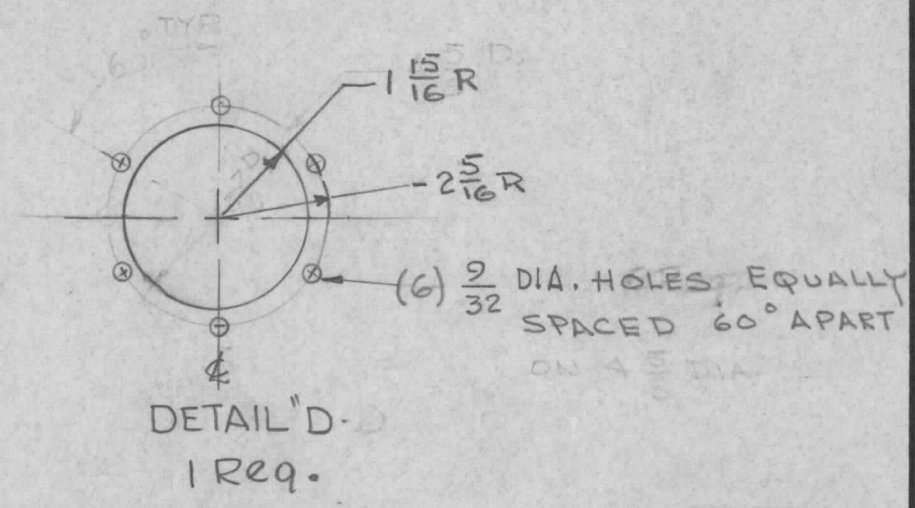
NOTES

THE CONTENTS OF THIS DRAWING ARE THE EXCLUSIVE PROPERTY OF THE TECHNICAL MATERIEL CORP. ITS UNAUTHORIZED USE OR REPRODUCTION IN WHOLE OR IN PART IS STRICTLY FORBIDDEN.

PX-699	REVISIONS						
	SYM	DESCRIPTION	DATE	E.M.N. NO.	DRAFT	CHKD	APPD
A	TOP VIEW 4 1/4 DIM ADDED	4-25-63	8892	gny	pde		



HOLE	DESCRIPTION	REQ'D
A	15/64 DIA.	8
B	9/64 DIA.	8
C	9/32 DIA.	1
D	SEE DETAIL	1



1	TER-5000-300U	A-3130
Q'TY./UNIT	MODEL USED ON	ASS'Y. NO.
SCALE 1/8 = 1"	CODE	
THE CONTENTS OF THIS DRAWING ARE THE EXCLUSIVE PROPERTY OF THE TECHNICAL MATERIEL CORP. ITS UNAUTHORIZED USE OR REPRODUCTION IN WHOLE OR IN PART IS STRICTLY FORBIDDEN.		

REQ'D.	ITEM	PART NUMBER	DESCRIPTION	SYMBOL
F. BUDETTI LIST OF MATERIAL				
MATERIAL FIBERGLASS, MATTE		THE TECHNICAL MATERIEL CORP. MAMARONECK, NEW YORK		
FINISH S-756 GRAY SYNTHETIC ENAMEL		TITLE COVER, TOP		
UNLESS OTHERWISE SPECIFIED DIMENSIONS ARE IN INCHES AND INCLUDE CHEMICALLY APPLIED OR PLATED FINISHES		DRAWN G.D.L.	DATE 3-18-63	FINAL APPROVAL BP
DECIMALS .X ± .05 .XX ± .01 .XXX ± .005		ELECT. DES. aa		DATE
TOLERANCES ± 1/64 ANGLES ± 0° 30'		MECH. DES. gny		DATE
SHEET				REV. LTR. A

NOTES