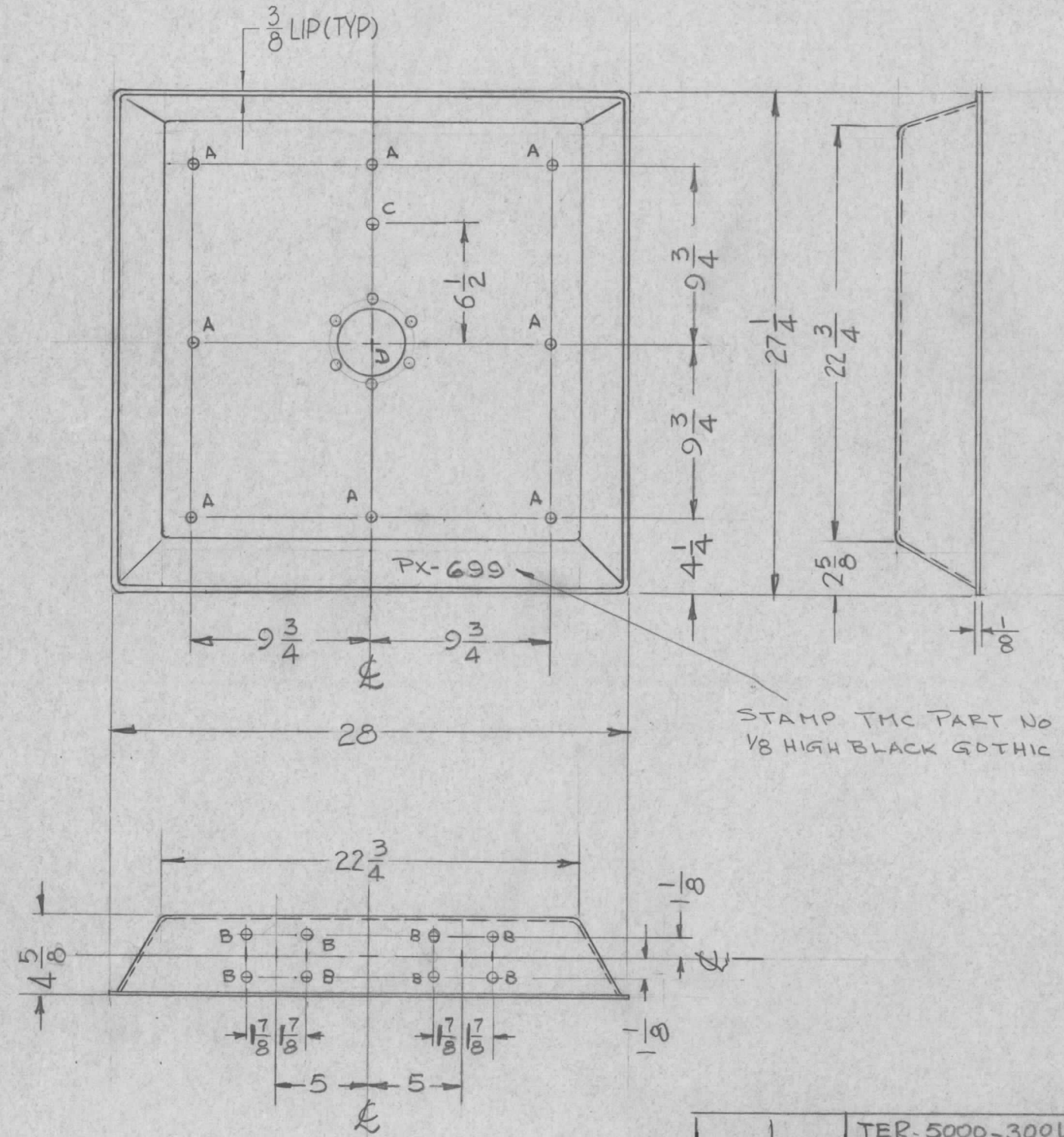
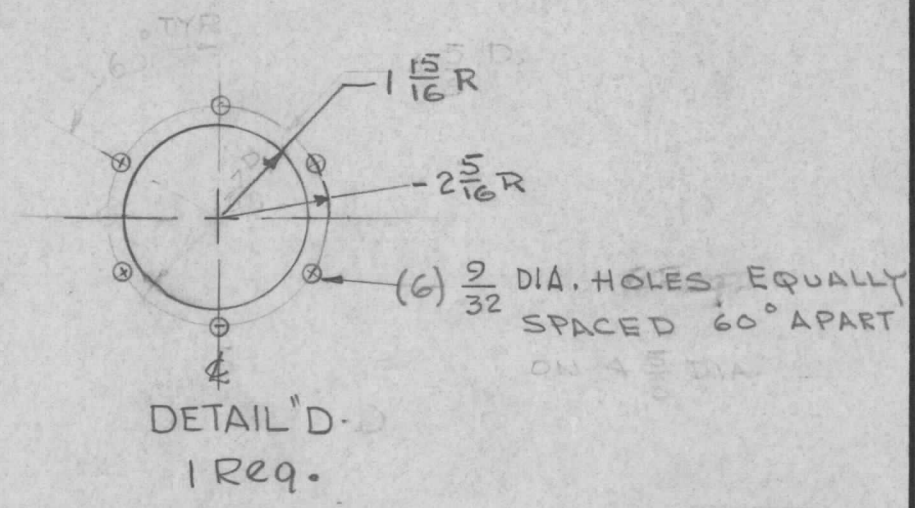


PX-699	REVISIONS						
	SYM	DESCRIPTION	DATE	E.M.N. NO.	DRAFT	CHKD	APPD
A	TOP VIEW 4 1/4 DIM ADDED	4-25-63	8892	gny	gde		



HOLE	DESCRIPTION	REQ'D
A	15/64 DIA.	8
B	9/64 DIA.	8
C	9/32 DIA.	1
D	SEE DETAIL	1



1	TER-5000-300U	A-3130
Q'TY./UNIT	MODEL USED ON	ASS'Y. NO.
SCALE 1/8 = 1"	CODE	
THE CONTENTS OF THIS DRAWING ARE THE EXCLUSIVE PROPERTY OF THE TECHNICAL MATERIEL CORP. ITS UNAUTHORIZED USE OR REPRODUCTION IN WHOLE OR IN PART IS STRICTLY FORBIDDEN.		

REQ'D.	ITEM	PART NUMBER	DESCRIPTION	SYMBOL
F. BUDETTI LIST OF MATERIAL				
MATERIAL FIBERGLASS, MATTE			THE TECHNICAL MATERIEL CORP. MAMARONECK, NEW YORK	
FINISH S-756 GRAY SYNTHETIC ENAMEL			TITLE COVER, TOP	
UNLESS OTHERWISE SPECIFIED DIMENSIONS ARE IN INCHES AND INCLUDE CHEMICALLY APPLIED OR PLATED FINISHES		DRAWN G.D.L.	DATE 3-18-63	FINAL APPROVAL BP
DECIMALS .X ± .05 .XX ± .01 .XXX ± .005		TOLERANCES	ELECT. DES. aa	DATE
		FRACTIONS ± 1/64 ANGLES ± 0° 30'	MECH. DES. gny	DATE
			SHEET	REV. LTR.

NOTES