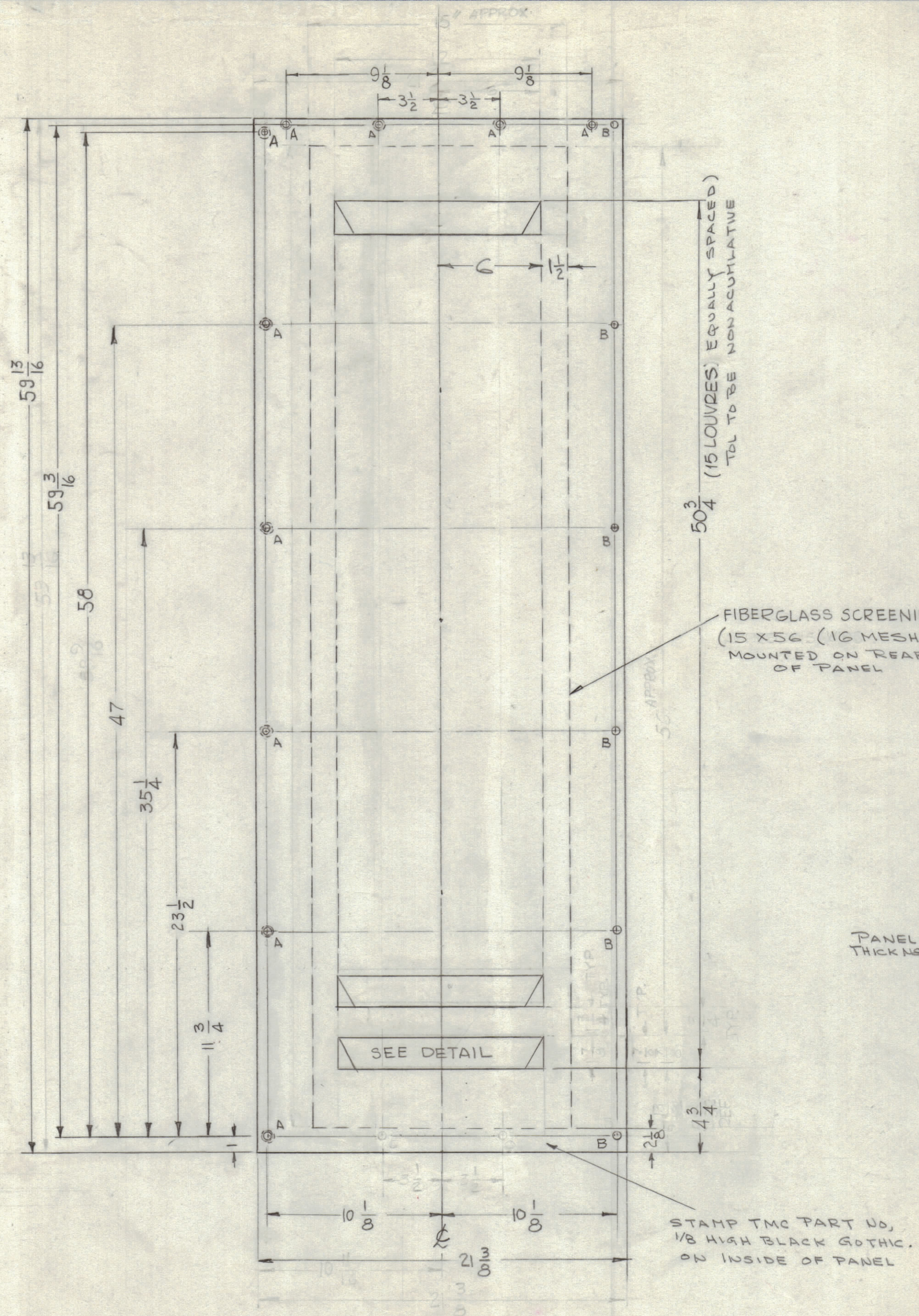
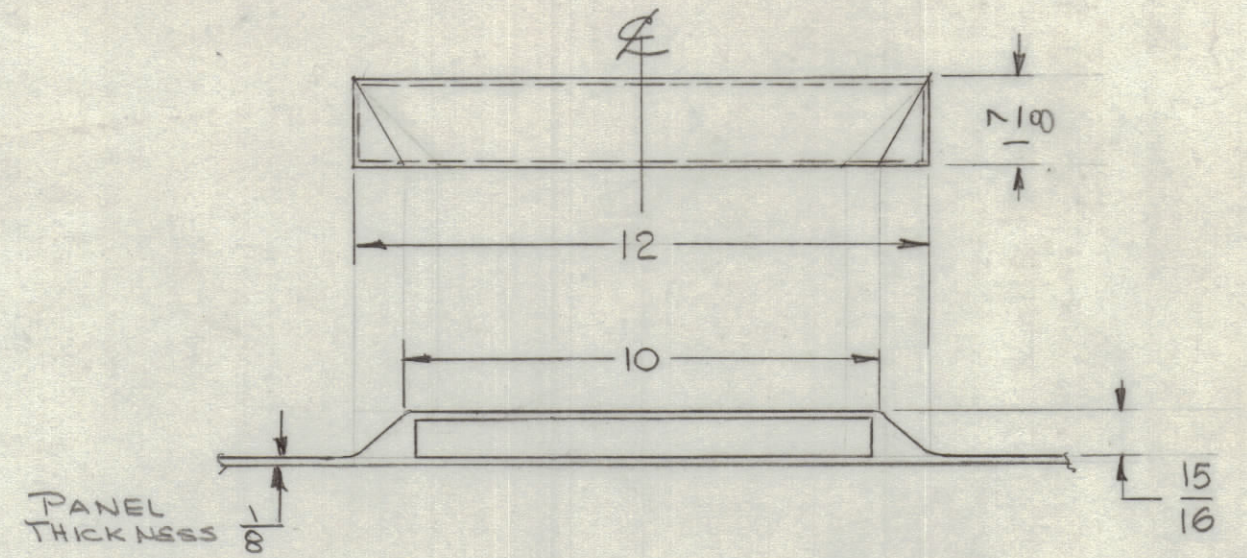


REVISIONS							
ZONE	SYM	DESCRIPTION	DATE	E.M.N. NO.	DRAFT	CHKD	APPD
	A	DELETED 2 "C" HOLES	2/20/64	10916	A.M.	[Signature]	[Signature]
	B	RELOCATED "A" HOLE, ADDED 59-3/16 DIM.	7-6-67	18338	L.A.K.	[Signature]	[Signature]



HOLE	DESCRIPTION	REQ'D
A	DRILL & C'SINK FOR 8-32	10
B	3/8 DIA.	6
C	1/4 DIA.	2



LOUVRE DETAIL  
(15 Req.)

PX 697-AS SHOWN  
PX 697-2 OPPOSITE HAND

STAMP TMC PART NO,  
1/8 HIGH BLACK GOTHIC.  
ON INSIDE OF PANEL

NOTES

1 EA	TER-5000-300W	A-3130
Q'TY./UNIT	MODEL USED ON	ASS'Y. NO.
SCALE	CODE	

THE CONTENTS OF THIS DRAWING ARE THE EXCLUSIVE PROPERTY OF THE TECHNICAL MATERIEL CORP. ITS UNAUTHORIZED USE OR REPRODUCTION IN WHOLE OR IN PART IS STRICTLY FORBIDDEN.

REQ'D.	ITEM	PART NUMBER	DESCRIPTION	SYMBOL
LIST OF MATERIAL				
MATERIAL		THE TECHNICAL MATERIEL CORP. MAMARONECK, NEW YORK		
FINISH		TITLE		
S-756 GRAY SYNTHETIC ENAMEL		DOOR, FRONT		
DRAWN		DATE	FINAL APPROVAL	
G.D.L.		3.19.63	[Signature]	
CHECKED		DATE		
[Signature]				
ELECT. DES.		DATE	DX-697	
MECH. DES.		DATE	B	
SHEET			REV. LTR.	

PX-697  
B